

Converting Colors

Decimal(12625314)

Have a look what the booklet for
Decimal(12625314) contains.

Decimal(12625314)	3
<i>Conversions</i>	4
<i>Details</i>	6
<i>Harmonies</i>	11
<i>Previews</i>	23
<i>Color Blindness Simulation</i>	26
<i>CSS Examples</i>	29

Color

Decimal(12625314)

Conversions

Conversions Part 1

Format	Color
Hex	C0A5A2
RGB	192, 165, 162
RGB Percent	75%, 65%, 64%
CMY	0.2471, 0.3529, 0.3647
CMYK	0.00, 0.14, 0.16, 0.25
HSL	6°, 19%, 69%
HSV	6°, 16%, 75%
XYZ	41.7149, 40.7254, 39.8446
YIQ	172.7310, 17.0550, 4.7910

Conversions

Conversions Part 2

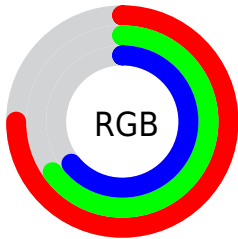
Format	Color
RYB	192, 165, 162
Decimal	12625314
CIELab	69.98, 9.36, 5.19
CIElCh	70, 10.702, 29.027
Yxy	40.7254, 0.3411, 0.3330
Android (android.graphics.Color)	4290815394 (0xFFC0A5A2)
YUV	172.7310, -5.2904, 16.8989
Hunter-Lab	63.8164, 5.0015, 7.6531

Details

The Decimal color **12625314** is a light color, and the websafe version is hex **CC9999**. A complement of this color would be **10665408**, and the grayscale version is **11382189**.

A 20% lighter version of the original color is **16375001**, and **9073006** is the 20% darker color. If you saturate the color by 10%, you get **12620943**, and if you desaturate by 10%, it is **12629685**.

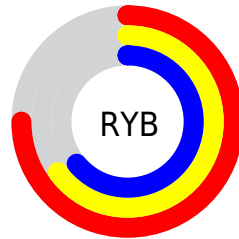
Distribution



Red (75%)

Green (65%)

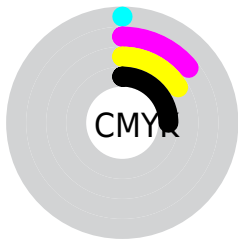
Blue (64%)



Red (75%)

Yellow (65%)

Blue (64%)

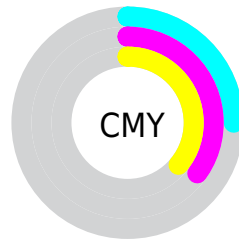


Cyan (0%)

Magenta (14%)

Yellow (16%)

Black (25%)



Cyan (25%)

Magenta (35%)

Yellow (36%)

Brightness & Saturation Gradients

These gradients show how the Decimal color 12625314 changes by changing the brightness by 10 percent. The first figure shows a shift by +10% for each color and the second figure -10%.

Similar to the brightness gradients but the following saturation gradients show a change of the Decimal color 12625314 by changing the saturation by 10% instead.

 12625314

 12625314

16777215

 10849160

 16375001

 9073006

 16775669

 7428438

 5783871

 4205353

 2692629

 1376256

 0

 12625314

 12625314

 12620943

 12629685

 12616316

 12634312

 12611944

 12638684

 12607573

 12643055

 12603202

 12647423

 12598575

 12648447

 12594204

 12589832

 12587776

Harmonies

Analogous

The Analogous color harmony consists of three colors that are next to each other on the color wheel.



12559788



12625314



12363675

Triad

The Triadic color harmony groups three colors that are evenly spaced from another and form a triangle on the color wheel.



12625314



10399905



10595518

Complementary

The Complementary color scheme is a pair of colors which are on the opposite of each other on the color wheel.



12625314



10665408

Split Complementary

Split-complementary colors differ from the complementary color scheme. The scheme consists of three colors, the original color and two neighbors of the complement color.



9940923



12625314



9810346

Square

The Square scheme is like the rectangle color scheme, but the four colors are evenly spaced on the color wheel.



12625314



11120026



9679284



11381180

Rectangle

The Rectangle color scheme consists of four colors that form a rectangle on the color wheel.



12625314



12036504



9679284



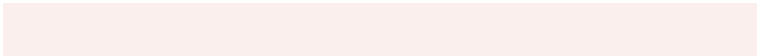
10333630

Sweetspot

The Sweet Spot groups the original color and five complimentary colors.



12625314



16445421



12624573



8222325



16579836



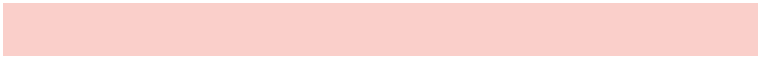
8224125

Same Dimension

The Same Dimension uses a secret algorithm to generate beautiful new colors.



12625314



16437194



12629154



6379607



10555392



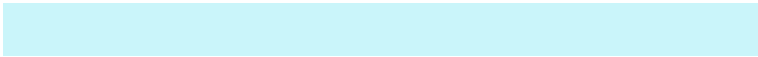
2163456

Inverse Universe

The Inverse Universe completely reimagines the original color for something new.



10665408



13301242



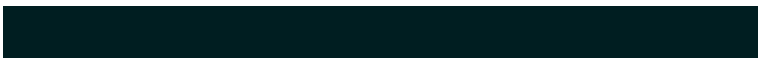
10661568



5726305



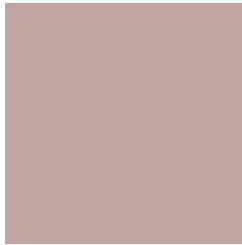
37281



7713

Previews

White Background



This preview shows how the Decimal color 12625314 looks on a white background.

Color Contrast Check

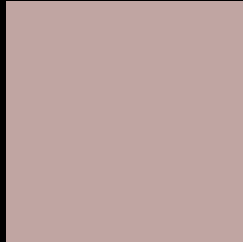
Large Text (above 18pt) WCAG AA × Fail

Any Text WCAG AA × Fail

Large Text (above 18pt) WCAG AAA × Fail

Any Text WCAG AAA × Fail

Black Background



This preview shows how the Decimal color 12625314 looks on a black background.

Color Contrast Check

Large Text (above 18pt) WCAG AA ✓ Pass

Any Text WCAG AA ✓ Pass

Large Text (above 18pt) WCAG AAA ✓ Pass

Any Text WCAG AAA ✓ Pass

If you want to check with other color combinations, try the [Color Contrast Checker](#).

Decimal 12625314 Background



This preview shows how black text looks on a background with the Decimal color 12625314.



This preview shows how white text looks on a background with the Decimal color 12625314.

Color Blindness Simulation

Color vision deficiency is a very complex topic, and I could not describe the different causes any better than Wikipedia does, so if you want to learn more, you should check out their [article about color blindness](#).

Dichromacy



Original Color
12625314

Protanopia
11578021

Deuteranopia
12559778



Tritanopia
12755888

Trichromacy



Original Color

12625314

Protanomaly

11970724

Deuteranomaly

12559778

Tritanomaly

12690603

Monochromacy



Original Color

12625314

Achromatopsia

11382189

Achromatomaly

11840169

CSS Examples

Text

The CSS property to change the color of the text to Decimal 12625314 is called "color". The color property can be set on classes, ids or directly on the HTML element.

This example shows how text in the color #C0A5A2 looks like.

```
.text, #text, p{  
  color:#C0A5A2  
}
```

If you want to add a text shadow in that color use the text-shadow property, you can generate a text shadow directly with our [CSS Text Shadow Generator](#).

Here you see how black text with a 4 pixel #C0A5A2 colored shadow looks like.

```
.shadow{ text-shadow: 4px 4px 2px #C0A5A2
}
```

Border

The CSS property to change the border of an element to Decimal 12625314 is called "border". The border property can be set on classes, ids or directly on the HTML element.

This example shows the color as border, it can be applied via the CSS property "border" or "border-color".

```
.border, #border, table{ border:4px solid
#C0A5A2 }
```

If only the border color should be changed use the property `border-color`.

```
.border{ border-color:#C0A5A2 }
```

If you want to add a box shadow in that color use:

Here you see how a box with a 4 pixel #C0A5A2 colored shadow looks like.

```
.boxshadow{ -moz-box-shadow:4px 4px 4px  
4px #C0A5A2; -webkit-box-shadow:4px 4px  
4px 4px #C0A5A2; box-shadow:4px 4px 4px  
4px #C0A5A2 }
```

Background

The CSS property to change the background color of an element to Decimal 12625314 is called "background". The background property can be set on classes, ids or directly on the HTML element.

```
.background, #background, body{  
background:#C0A5A2 }
```

If only the background color should be changed can be used:

```
.background{ background-color:#C0A5A2 }
```

This example shows the color as background, it is applied via the CSS property "background".

To optimize and compress your CSS code, you can use our [online CSS compressor and optimizer](#) based on csstidy. If you want to create a linear or radial gradient as background or border, check our [CSS Gradient Generator](#).

Hey! You found this booklet interesting? Support Converting Colors with the new Membership Option!

The pro membership hides all ads, plus gives you double the colors in the color bucket, and more awesome pro features!

[Learn more, Memberships starting at \\$2.50/m!](#)

**Follow me
on Twitter!**

@ConvertingColor