

# Converting Colors

Decimal(12625555)

Have a look what the booklet for  
Decimal(12625555) contains.

<b>Decimal(12625555)</b> .....	3
<i><b>Conversions</b></i> .....	4
<i><b>Details</b></i> .....	6
<i><b>Harmonies</b></i> .....	11
<i><b>Previews</b></i> .....	23
<i><b>Color Blindness Simulation</b></i> .....	26
<i><b>CSS Examples</b></i> .....	29

# **Color**

**Decimal(12625555)**

# Conversions

## Conversions Part 1

<b>Format</b>	<b>Color</b>
Hex	C0A693
RGB	192, 166, 147
RGB Percent	75%, 65%, 58%
CMY	0.2471, 0.3490, 0.4235
CMYK	0.00, 0.14, 0.23, 0.25
HSL	25°, 26%, 66%
HSV	25°, 23%, 75%
XYZ	40.6409, 40.5855, 33.2955
YIQ	171.6080, 21.5950, -0.3970

# Conversions

## Conversions Part 2

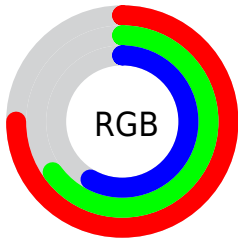
Format	Color
<a href="#">RYB</a>	<a href="#">192, 180, 147</a>
Decimal	<a href="#">12625555</a>
CIELab	<a href="#">69.88, 6.49, 13.33</a>
CIELCh	<a href="#">70, 14.831, 64.036</a>
Yxy	<a href="#">40.5855, 0.3549, 0.3544</a>
Android (android.graphics.Color)	<a href="#">4290815635 (0xFFC0A693)</a>
YUV	<a href="#">171.6080, -12.1317, 17.8838</a>
Hunter-Lab	<a href="#">63.7067, 2.3850, 13.6075</a>

# Details

The Decimal color **12625555** is a light color, and the websafe version is hex **CC9999**. A complement of this color would be **9678272**, and the grayscale version is **11316396**.

A 20% lighter version of the original color is **16375241**, and **9073248** is the 20% darker color. If you saturate the color by 10%, you get **12622720**, and if you desaturate by 10%, it is **12628390**.

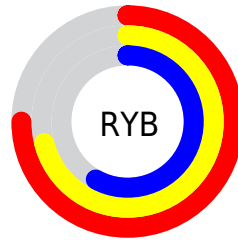
# Distribution



Red (75%)

Green (65%)

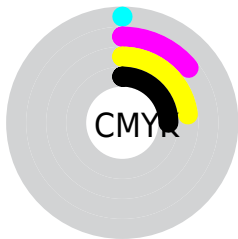
Blue (58%)



Red (75%)

Yellow (71%)

Blue (58%)

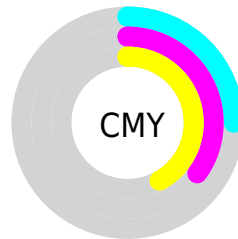


Cyan (0%)

Magenta (14%)

Yellow (23%)

Black (25%)



Cyan (25%)

Magenta (35%)

Yellow (42%)

# Brightness & Saturation Gradients

These gradients show how the Decimal color 12625555 changes by changing the brightness by 10 percent. The first figure shows a shift by +10% for each color and the second figure -10%.

Similar to the brightness gradients but the following saturation gradients show a change of the Decimal color 12625555 by changing the saturation by 10% instead.



 12625555

 12625555

16777215

 10849401

 16375241

 9073248

 16775909

 7363145

 5718578

 4140061

 2692868

 983040

 0

 12625555

 12625555

 12622720

 12628390

 12619885

 12631225

 12617049

 12634061

 12614214

 12636896

 12611379

 12639731

 12608288

 12642815

 12605453

 12645631

 12603648

 12648447

# Harmonies

## Analogous

The Analogous color harmony consists of three colors that are next to each other on the color wheel.



13083548



12625555



11840144

# Triad

The Triadic color harmony groups three colors that are evenly spaced from another and form a triangle on the color wheel.



12625555



9155500



11577281

# Complementary

The Complementary color scheme is a pair of colors which are on the opposite of each other on the color wheel.



12625555



9678272

# Split Complementary

Split-complementary colors differ from the complementary color scheme. The scheme consists of three colors, the original color and two neighbors of the complement color.



10398661



12625555



8958649

# Square

The Square scheme is like the rectangle color scheme, but the four colors are evenly spaced on the color wheel.



12625555



9876127



9416642



12493751

# Rectangle

The Rectangle color scheme consists of four colors that form a rectangle on the color wheel.



12625555



11185554



9416642



11184323

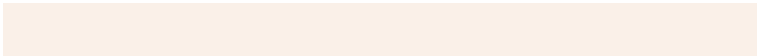


# Sweetspot

The Sweet Spot groups the original color and five complimentary colors.



12625555



16445672



12620717



8222579



16579836



8224125



# Same Dimension

The Same Dimension uses a secret algorithm to generate beautiful new colors.



12625555



16437684



12631187



6380375



10568704



2166272

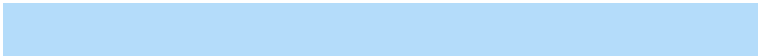


# Inverse Universe

The Inverse Universe completely reimagines the original color for something new.



9678272



11853050



9672640



5725537



23969



4897



# Previews

## White Background



This preview shows how the Decimal color 12625555 looks on a white background.

## Color Contrast Check

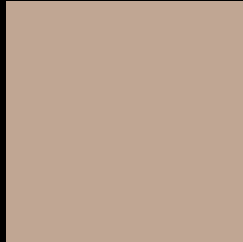
Large Text (above 18pt) WCAG AA × Fail

Any Text WCAG AA × Fail

Large Text (above 18pt) WCAG AAA × Fail

Any Text WCAG AAA × Fail

# Black Background



This preview shows how the Decimal color 12625555 looks on a black background.

## Color Contrast Check

Large Text (above 18pt) WCAG AA ✓ Pass

Any Text WCAG AA ✓ Pass

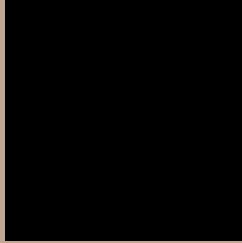
Large Text (above 18pt) WCAG AAA ✓ Pass

Any Text WCAG AAA ✓ Pass

If you want to check with other color combinations, try the [Color Contrast Checker](#).



## Decimal 12625555 Background



This preview shows how black text looks on a background with the Decimal color 12625555.



This preview shows how white text looks on a background with the Decimal color 12625555.

# Color Blindness Simulation

Color vision deficiency is a very complex topic, and I could not describe the different causes any better than Wikipedia does, so if you want to learn more, you should check out their [article about color blindness](#).


## Dichromacy



**Original Color**  
12625555

**Protanopia**  
11774613

**Deuteranopia**  
12887443



**Tritanopia**  
12821167

# Trichromacy



**Original Color**  
12625555

**Protanomaly**  
12102036

**Deuteranomaly**  
12821907

**Tritanomaly**  
12755877

# Monochromacy



**Original Color**  
12625555

**Achromatopsia**  
11316396

**Achromatomaly**  
11774627

# CSS Examples

## Text

The CSS property to change the color of the text to Decimal 12625555 is called "color". The color property can be set on classes, ids or directly on the HTML element.

This example shows how text in the color #C0A693 looks like.

```
.text, #text, p{  
  color:#C0A693  
}
```

If you want to add a text shadow in that color use the text-shadow property, you can generate a text shadow directly with our [CSS Text Shadow Generator](#).

Here you see how black text with a 4 pixel #C0A693 colored shadow looks like.

```
.shadow{ text-shadow: 4px 4px 2px #C0A693
}
```

## Border

The CSS property to change the border of an element to Decimal 12625555 is called "border". The border property can be set on classes, ids or directly on the HTML element.

This example shows the color as border, it can be applied via the CSS property "border" or "border-color".

```
.border, #border, table{ border:4px solid
#C0A693 }
```

If only the border color should be changed use the property `border-color`.

```
.border{ border-color:#C0A693 }
```

If you want to add a box shadow in that color use:

Here you see how a box with a 4 pixel #C0A693 colored shadow looks like.

```
.boxshadow{ -moz-box-shadow:4px 4px 4px  
4px #C0A693; -webkit-box-shadow:4px 4px  
4px 4px #C0A693; box-shadow:4px 4px 4px  
4px #C0A693 }
```

# Background

The CSS property to change the background color of an element to Decimal 12625555 is called "background". The background property can be set on classes, ids or directly on the HTML element.

```
.background, #background, body{  
background:#C0A693 }
```

If only the background color should be changed can be used:

```
.background{ background-color:#C0A693 }
```

This example shows the color as background, it is applied via the CSS property "background".

To optimize and compress your CSS code, you can use our [online CSS compressor and optimizer](#) based on csstidy. If you want to create a linear or radial gradient as background or border, check our [CSS Gradient Generator](#).



Hey! You found this booklet interesting? Support Converting Colors with the new Membership Option!

The pro membership hides all ads, plus gives you double the colors in the color bucket, and more awesome pro features!

**[Learn more, Memberships starting at \\$2.50/m!](#)**

**Follow me  
on Twitter!**

@ConvertingColor