

Converting Colors

Decimal(12625830)

Have a look what the booklet for
Decimal(12625830) contains.

Decimal(12625830)	3
<i>Conversions</i>	4
<i>Details</i>	6
<i>Harmonies</i>	11
<i>Previews</i>	23
<i>Color Blindness Simulation</i>	26
<i>CSS Examples</i>	29

Color

Decimal(12625830)

Conversions

Conversions Part 1

Format	Color
Hex	C0A7A6
RGB	192, 167, 166
RGB Percent	75%, 65%, 65%
CMY	0.2471, 0.3451, 0.3490
CMYK	0.00, 0.13, 0.14, 0.25
HSL	2°, 17%, 70%
HSV	2°, 14%, 75%
XYZ	42.4399, 41.5971, 41.8686
YIQ	174.3610, 15.2210, 4.9890

Conversions

Conversions Part 2

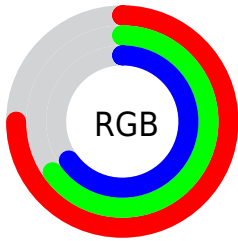
Format	Color
RYB	192, 167, 166
Decimal	12625830
CIELab	70.59, 8.92, 3.86
CIELCh	71, 9.720, 23.402
Yxy	41.5971, 0.3371, 0.3304
Android (android.graphics.Color)	4290815910 (0xFFC0A7A6)
YUV	174.3610, -4.1220, 15.4694
Hunter-Lab	64.4958, 4.5899, 6.6579

Details

The Decimal color **12625830** is a light color, and the websafe version is hex **CC9999**. A complement of this color would be **10928064**, and the grayscale version is **11447982**.

A 20% lighter version of the original color is **16375517**, and **9073522** is the 20% darker color. If you saturate the color by 10%, you get **12621203**, and if you desaturate by 10%, it is **12630457**.

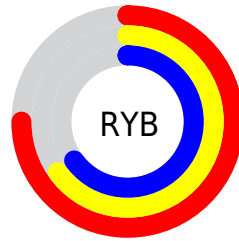
Distribution



Red (75%)

Green (65%)

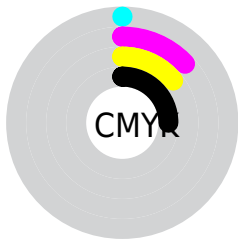
Blue (65%)



Red (75%)

Yellow (65%)

Blue (65%)

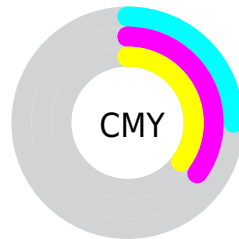


Cyan (0%)

Magenta (13%)

Yellow (14%)

Black (25%)



Cyan (25%)

Magenta (35%)

Yellow (35%)

Brightness & Saturation Gradients

These gradients show how the Decimal color 12625830 changes by changing the brightness by 10 percent. The first figure shows a shift by +10% for each color and the second figure -10%.

Similar to the brightness gradients but the following saturation gradients show a change of the Decimal color 12625830 by changing the saturation by 10% instead.

 12625830

 12625830

16777215

 10849676

 16375517

 9073522

 16776186

 7428698

 5784386

 4205868

 2758680

 1441792

 0

 12625830

 12625830

■ 12621203

■ 12630457

■ 12616320

■ 12635340

■ 12611692

■ 12639968

■ 12606809

■ 12644851

■ 12602182

■ 12648447

■ 12597299

■ 12592672

■ 12587788

■ 12584704

Harmonies

Analogous

The Analogous color harmony consists of three colors that are next to each other on the color wheel.



12494767



12625830



12429727

Triad

The Triadic color harmony groups three colors that are evenly spaced from another and form a triangle on the color wheel.



12625830



10662306



10596030

Complementary

The Complementary color scheme is a pair of colors which are on the opposite of each other on the color wheel.



12625830



10928064

Split Complementary

Split-complementary colors differ from the complementary color scheme. The scheme consists of three colors, the original color and two neighbors of the complement color.



10072250



12625830



10138282

Square

The Square scheme is like the rectangle color scheme, but the four colors are evenly spaced on the color wheel.



12625830



11316892



9941683



11316157

Rectangle

The Rectangle color scheme consists of four colors that form a rectangle on the color wheel.



12625830



12167836



9941683



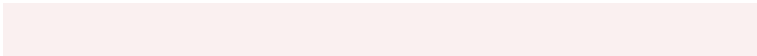
10399677

Sweetspot

The Sweet Spot groups the original color and five complimentary colors.



12625830



16445680



12625599



8222583



16579836



8224125

Same Dimension

The Same Dimension uses a secret algorithm to generate beautiful new colors.



12625830



16438226



12629158



6379607



10552832



2162944

Inverse Universe

The Inverse Universe completely reimagines the original color for something new.



10928064



13826298



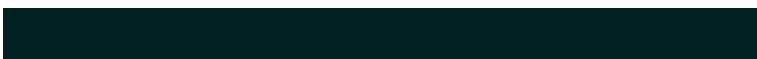
10924736



5726561



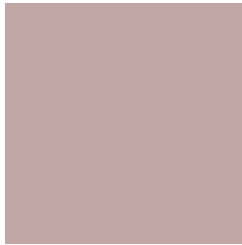
39585



8225

Previews

White Background



This preview shows how the Decimal color 12625830 looks on a white background.

Color Contrast Check

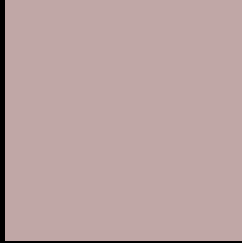
Large Text (above 18pt) WCAG AA × Fail

Any Text WCAG AA × Fail

Large Text (above 18pt) WCAG AAA × Fail

Any Text WCAG AAA × Fail

Black Background



This preview shows how the Decimal color 12625830 looks on a black background.

Color Contrast Check

Large Text (above 18pt) WCAG AA ✓ Pass

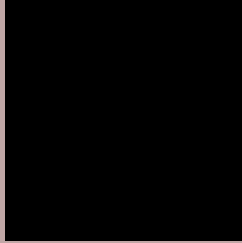
Any Text WCAG AA ✓ Pass

Large Text (above 18pt) WCAG AAA ✓ Pass

Any Text WCAG AAA ✓ Pass

If you want to check with other color combinations, try the [Color Contrast Checker](#).

Decimal 12625830 Background



This preview shows how black text looks on a background with the Decimal color 12625830.



This preview shows how white text looks on a background with the Decimal color 12625830.

Color Blindness Simulation

Color vision deficiency is a very complex topic, and I could not describe the different causes any better than Wikipedia does, so if you want to learn more, you should check out their [article about color blindness](#).

Dichromacy





Tritanopia
12756402

Trichromacy



Original Color
12625830

Protanomaly
11971240

Deuteranomaly
12625830

Tritanomaly
12691118

Monochromacy



Original Color
12625830

Achromatopsia
11447982

Achromatomaly
11905963

CSS Examples

Text

The CSS property to change the color of the text to Decimal 12625830 is called "color". The color property can be set on classes, ids or directly on the HTML element.

This example shows how text in the color #C0A7A6 looks like.

```
.text, #text, p{  
    color:#C0A7A6  
}
```

If you want to add a text shadow in that color use the text-shadow property, you can generate a text shadow directly with our [CSS Text Shadow Generator](#).

Here you see how black text with a 4 pixel #C0A7A6 colored shadow looks like.

```
.shadow{ text-shadow: 4px 4px 2px #C0A7A6
}
```

Border

The CSS property to change the border of an element to Decimal 12625830 is called "border". The border property can be set on classes, ids or directly on the HTML element.

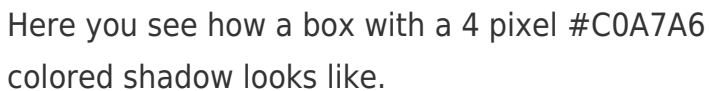
This example shows the color as border, it can be applied via the CSS property "border" or "border-color".

```
.border, #border, table{ border:4px solid
#C0A7A6 }
```

If only the border color should be changed use the property `border-color`.

```
.border{ border-color:#C0A7A6 }
```

If you want to add a box shadow in that color use:



Here you see how a box with a 4 pixel #C0A7A6 colored shadow looks like.

```
.boxshadow{ -moz-box-shadow:4px 4px 4px  
4px #C0A7A6; -webkit-box-shadow:4px 4px  
4px 4px #C0A7A6; box-shadow:4px 4px 4px  
4px #C0A7A6 }
```

Background

The CSS property to change the background color of an element to Decimal 12625830 is called "background". The background property can be set on classes, ids or directly on the HTML element.

```
.background, #background, body{  
background:#C0A7A6 }
```

If only the background color should be changed can be used:

```
.background{ background-color:#C0A7A6 }
```

This example shows the color as background, it is applied via the CSS property "background".

To optimize and compress your CSS code, you can use our [online CSS compressor and optimizer](#) based on csstidy. If you want to create a linear or radial gradient as background or border, check our [CSS Gradient Generator](#).

Hey! You found this booklet interesting? Support Converting Colors with the new Membership Option!

The pro membership hides all ads, plus gives you double the colors in the color bucket, and more awesome pro features!

[Learn more, Memberships starting at \\$2.50/m!](#)

**Follow me
on Twitter!**

@ConvertingColor