

Converting Colors

Decimal(12626861)

Have a look what the booklet for
Decimal(12626861) contains.

Decimal(12626861)	3
<i>Conversions</i>	4
<i>Details</i>	6
<i>Harmonies</i>	11
<i>Previews</i>	23
<i>Color Blindness Simulation</i>	26
<i>CSS Examples</i>	29

Color

Decimal(12626861)

Conversions

Conversions Part 1

Format	Color
Hex	C0ABAD
RGB	192, 171, 173
RGB Percent	75%, 67%, 68%
CMY	0.2471, 0.3294, 0.3216
CMYK	0.00, 0.11, 0.10, 0.25
HSL	354°, 14%, 71%
HSV	354°, 11%, 75%
XYZ	43.8440, 43.3494, 45.5916
YIQ	177.5070, 11.8740, 5.0740

Conversions

Conversions Part 2

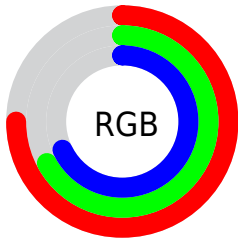
Format	Color
RYB	192, 171, 173
Decimal	12626861
CIELab	71.79, 7.92, 1.74
CIElCh	72, 8.109, 12.386
Yxy	43.3494, 0.3302, 0.3265
Android (android.graphics.Color)	4290816941 (0xFFC0ABAD)
YUV	177.5070, -2.2220, 12.7104
Hunter-Lab	65.8403, 3.6452, 5.0324

Details

The Decimal color **12626861** is a light color, and the websafe version is hex **999999**. A complement of this color would be **11255998**, and the grayscale version is **11711154**.

A 20% lighter version of the original color is **16376548**, and **9074553** is the 20% darker color. If you saturate the color by 10%, you get **12621980**, and if you desaturate by 10%, it is **12631742**.

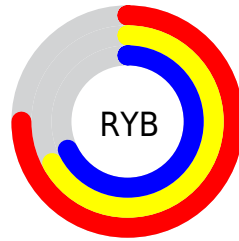
Distribution



Red (75%)

Green (67%)

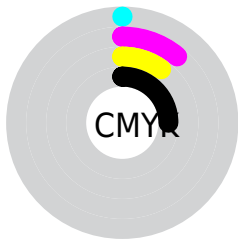
Blue (68%)



Red (75%)

Yellow (67%)

Blue (68%)

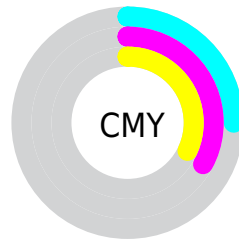


Cyan (0%)

Magenta (11%)

Yellow (10%)

Black (25%)



Cyan (25%)

Magenta (33%)

Yellow (32%)

Brightness & Saturation Gradients

These gradients show how the Decimal color 12626861 changes by changing the brightness by 10 percent. The first figure shows a shift by +10% for each color and the second figure -10%.

Similar to the brightness gradients but the following saturation gradients show a change of the Decimal color 12626861 by changing the saturation by 10% instead.

■ 12626861

■ 12626861

16777215

■ 10850450

■ 16376548

■ 9074553

■ 7429728

■ 5785160

■ 4272178

■ 2759453

■ 1572867

■ 0

■ 12626861

■ 12626861

 12621980

 12631742

 12617098

 12636624

 12611961

 12641761

 12607080

 12646642

 12602198

 12648447

 12597317

 12592435

 12587298

 12582930

Harmonies

Analogous

The Analogous color harmony consists of three colors that are next to each other on the color wheel.



12364725



12626861



12561574

Triad

The Triadic color harmony groups three colors that are evenly spaced from another and form a triangle on the color wheel.



12626861



11187109



10793662

Complementary

The Complementary color scheme is a pair of colors which are on the opposite of each other on the color wheel.



12626861



11255998

Split Complementary

Split-complementary colors differ from the complementary color scheme. The scheme consists of three colors, the original color and two neighbors of the complement color.



10466490



12626861



10728619

Square

The Square scheme is like the rectangle color scheme, but the four colors are evenly spaced on the color wheel.



12626861



11776161



10400947



11317182

Rectangle

The Rectangle color scheme consists of four colors that form a rectangle on the color wheel.



12626861



12365219



10400947



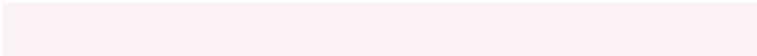
10662845

Sweetspot

The Sweet Spot groups the original color and five complimentary colors.



12626861



16446195



12495808



8222840



16579836



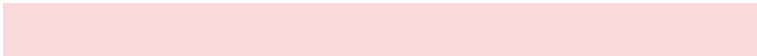
8224125

Same Dimension

The Same Dimension uses a secret algorithm to generate beautiful new colors.



12626861



16439773



12628907



6379352



10551311



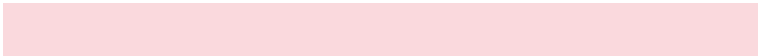
2162691

Inverse Universe

The Inverse Universe completely reimagines the original color for something new.



12626861



16439773



11253952



6379352



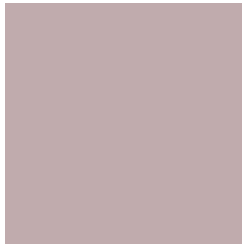
10551311



2162691

Previews

White Background



This preview shows how the Decimal color 12626861 looks on a white background.

Color Contrast Check

Large Text (above 18pt) WCAG AA × Fail

Any Text WCAG AA × Fail

Large Text (above 18pt) WCAG AAA × Fail

Any Text WCAG AAA × Fail

Black Background



This preview shows how the Decimal color 12626861 looks on a black background.

Color Contrast Check

Large Text (above 18pt) WCAG AA ✓ Pass

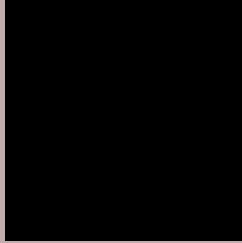
Any Text WCAG AA ✓ Pass

Large Text (above 18pt) WCAG AAA ✓ Pass

Any Text WCAG AAA ✓ Pass

If you want to check with other color combinations, try the [Color Contrast Checker](#).

Decimal 12626861 Background



This preview shows how black text looks on a background with the Decimal color 12626861.




This preview shows how white text looks on a background with the Decimal color 12626861.

Color Blindness Simulation

Color vision deficiency is a very complex topic, and I could not describe the different causes any better than Wikipedia does, so if you want to learn more, you should check out their [article about color blindness](#).

Dichromacy





Tritanopia
12691895

Trichromacy



Original Color
12626861

Protanomaly
12103342

Deuteranomaly
12692141

Tritanomaly
12692147

Monochromacy



Original Color
12626861

Achromatopsia
11711154

Achromatomaly
12038064

CSS Examples

Text

The CSS property to change the color of the text to Decimal 12626861 is called "color". The color property can be set on classes, ids or directly on the HTML element.

This example shows how text in the color #C0ABAD looks like.

```
.text, #text, p{  
    color:#C0ABAD  
}
```

If you want to add a text shadow in that color use the text-shadow property, you can generate a text shadow directly with our [CSS Text Shadow Generator](#).

Here you see how black text with a 4 pixel #C0ABAD colored shadow looks like.

```
.shadow{ text-shadow: 4px 4px 2px #C0ABAD
}
```

Border

The CSS property to change the border of an element to Decimal 12626861 is called "border". The border property can be set on classes, ids or directly on the HTML element.

This example shows the color as border, it can be applied via the CSS property "border" or "border-color".

```
.border, #border, table{ border:4px solid
#C0ABAD }
```

If only the border color should be changed use the property `border-color`.

```
.border{ border-color:#C0ABAD }
```

If you want to add a box shadow in that color use:

Here you see how a box with a 4 pixel #C0ABAD colored shadow looks like.

```
.boxshadow{ -moz-box-shadow:4px 4px 4px  
4px #C0ABAD; -webkit-box-shadow:4px 4px  
4px 4px #C0ABAD; box-shadow:4px 4px 4px  
4px #C0ABAD }
```

Background

The CSS property to change the background color of an element to Decimal 12626861 is called "background". The background property can be set on classes, ids or directly on the HTML element.

```
.background, #background, body{  
background:#C0ABAD }
```

If only the background color should be changed can be used:

```
.background{ background-color:#C0ABAD }
```

This example shows the color as background, it is applied via the CSS property "background".

To optimize and compress your CSS code, you can use our [online CSS compressor and optimizer](#) based on csstidy. If you want to create a linear or radial gradient as background or border, check our [CSS Gradient Generator](#).

Hey! You found this booklet interesting? Support Converting Colors with the new Membership Option!

The pro membership hides all ads, plus gives you double the colors in the color bucket, and more awesome pro features!

[Learn more, Memberships starting at \\$2.50/m!](#)

**Follow me
on Twitter!**

@ConvertingColor