

# Converting Colors

Decimal(12627120)

Have a look what the booklet for  
Decimal(12627120) contains.

<b>Decimal(12627120)</b> .....	3
<i><b>Conversions</b></i> .....	4
<i><b>Details</b></i> .....	6
<i><b>Harmonies</b></i> .....	11
<i><b>Previews</b></i> .....	23
<i><b>Color Blindness Simulation</b></i> .....	26
<i><b>CSS Examples</b></i> .....	29

# **Color**

**Decimal(12627120)**

# Conversions

## Conversions Part 1

Format	Color
Hex	C0ACB0
RGB	192, 172, 176
RGB Percent	75%, 67%, 69%
CMY	0.2471, 0.3255, 0.3098
CMYK	0.00, 0.10, 0.08, 0.25
HSL	348°, 14%, 71%
HSV	348°, 10%, 75%
XYZ	44.3272, 43.8461, 47.2011
YIQ	178.4360, 10.6360, 5.4840

# Conversions

## Conversions Part 2

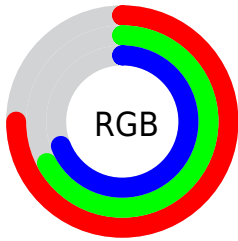
Format	Color
<a href="#">RYB</a>	<a href="#">192, 172, 176</a>
Decimal	<a href="#">12627120</a>
CIELab	<a href="#">72.13, 7.89, 0.57</a>
CIElCh	<a href="#">72, 7.916, 4.165</a>
Yxy	<a href="#">43.8461, 0.3274, 0.3239</a>
Android (android.graphics.Color)	<a href="#">4290817200 (0xFFC0ACB0)</a>
YUV	<a href="#">178.4360, -1.2009, 11.8956</a>
Hunter-Lab	<a href="#">66.2164, 3.6145, 4.0877</a>

# Details

The Decimal color **12627120** is a light color, and the websafe version is hex **999999**. A complement of this color would be **11321532**, and the grayscale version is **11711154**.

A 20% lighter version of the original color is **16311272**, and **9074812** is the 20% darker color. If you saturate the color by 10%, you get **12622241**, and if you desaturate by 10%, it is **12631999**.

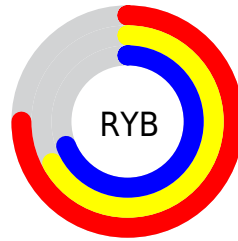
# Distribution



Red (75%)

Green (67%)

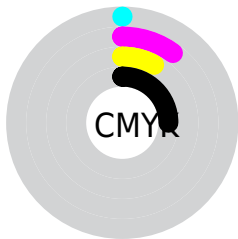
Blue (69%)



Red (75%)

Yellow (67%)

Blue (69%)

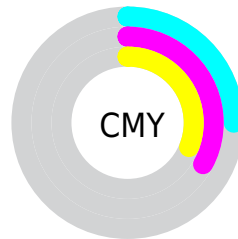


Cyan (0%)

Magenta (10%)

Yellow (8%)

Black (25%)



Cyan (25%)

Magenta (33%)

Yellow (31%)

# Brightness & Saturation Gradients

These gradients show how the Decimal color 12627120 changes by changing the brightness by 10 percent. The first figure shows a shift by +10% for each color and the second figure -10%.

Similar to the brightness gradients but the following saturation gradients show a change of the Decimal color 12627120 by changing the saturation by 10% instead.



 12627120

 12627120

16777215

 10850709

 16311272

 9074812

 7429987

 5785419

 4272436

 2825247

 1507847

 0

 12627120

 12627120

 12622241

 12631999

 12617361

 12636879

 12612226

 12642014

 12607347

 12646893

 12602467

 12648445

 12597588

 12648447

 12592708

 12587573

 12582950

# Harmonies

## Analogous

The Analogous color harmony consists of three colors that are next to each other on the color wheel.



12299703



12627120



12627369

# Triad

The Triadic color harmony groups three colors that are evenly spaced from another and form a triangle on the color wheel.



12627120



11449253



10728382

# Complementary

The Complementary color scheme is a pair of colors which are on the opposite of each other on the color wheel.



12627120



11321532

# Split Complementary

Split-complementary colors differ from the complementary color scheme. The scheme consists of three colors, the original color and two neighbors of the complement color.



10466745



12627120



10925482

# Square

The Square scheme is like the rectangle color scheme, but the four colors are evenly spaced on the color wheel.



12627120



11973026



10532274



11252159

# Rectangle

The Rectangle color scheme consists of four colors that form a rectangle on the color wheel.



12627120



12496549



10532274



10597564



# Sweetspot

The Sweet Spot groups the original color and five complimentary colors.



12627120



16446196



12364992



8222841



16579836



8224125

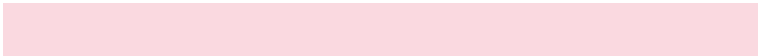


# Same Dimension

The Same Dimension uses a secret algorithm to generate beautiful new colors.



12627120



16439776



12628652



6379353



10551328



2162695



# Inverse Universe

The Inverse Universe completely reimagines the original color for something new.



12627120



16439776



11320000



6379353



10551328

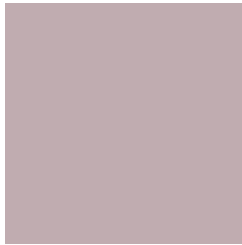


2162695



# Previews

## White Background



This preview shows how the Decimal color 12627120 looks on a white background.

## Color Contrast Check

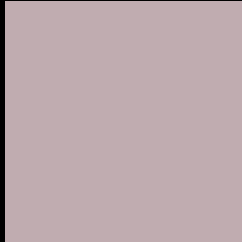
Large Text (above 18pt) WCAG AA × Fail

Any Text WCAG AA × Fail

Large Text (above 18pt) WCAG AAA × Fail

Any Text WCAG AAA × Fail

# Black Background



This preview shows how the Decimal color 12627120 looks on a black background.

## Color Contrast Check

Large Text (above 18pt) WCAG AA ✓ Pass

Any Text WCAG AA ✓ Pass

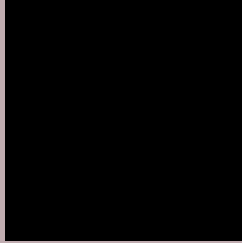
Large Text (above 18pt) WCAG AAA ✓ Pass

Any Text WCAG AAA ✓ Pass

If you want to check with other color combinations, try the [Color Contrast Checker](#).



## Decimal 12627120 Background



This preview shows how black text looks on a background with the Decimal color 12627120.



This preview shows how white text looks on a background with the Decimal color 12627120.

# Color Blindness Simulation

Color vision deficiency is a very complex topic, and I could not describe the different causes any better than Wikipedia does, so if you want to learn more, you should check out their [article about color blindness](#).


## Dichromacy



**Original Color**  
12627120

**Protanopia**  
11841714

**Deuteranopia**  
12757936



**Tritanopia**  
12692408

# Trichromacy



**Original Color**  
12627120

**Protanomaly**  
12103601

**Deuteranomaly**  
12692400

**Tritanomaly**  
12692405

# Monochromacy



**Original Color**  
12627120

**Achromatopsia**  
11711154

**Achromatomaly**  
12038321

# CSS Examples

## Text

The CSS property to change the color of the text to Decimal 12627120 is called "color". The color property can be set on classes, ids or directly on the HTML element.

This example shows how text in the color #C0ACB0 looks like.

```
.text, #text, p{  
    color:#C0ACB0  
}
```

If you want to add a text shadow in that color use the text-shadow property, you can generate a text shadow directly with our [CSS Text Shadow Generator](#).

Here you see how black text with a 4 pixel #C0ACB0 colored shadow looks like.

```
.shadow{ text-shadow: 4px 4px 2px #C0ACB0
}
```

## Border

The CSS property to change the border of an element to Decimal 12627120 is called "border". The border property can be set on classes, ids or directly on the HTML element.

This example shows the color as border, it can be applied via the CSS property "border" or "border-color".

```
.border, #border, table{ border:4px solid
#C0ACB0 }
```

If only the border color should be changed use the property `border-color`.

```
.border{ border-color:#C0ACB0 }
```

If you want to add a box shadow in that color use:

Here you see how a box with a 4 pixel `#C0ACB0` colored shadow looks like.

```
.boxshadow{ -moz-box-shadow:4px 4px 4px  
4px #C0ACB0; -webkit-box-shadow:4px 4px  
4px 4px #C0ACB0; box-shadow:4px 4px 4px  
4px #C0ACB0 }
```

# Background

The CSS property to change the background color of an element to Decimal 12627120 is called "background". The background property can be set on classes, ids or directly on the HTML element.

```
.background, #background, body{  
background:#C0ACB0 }
```

If only the background color should be changed can be used:

```
.background{ background-color:#C0ACB0 }
```

This example shows the color as background, it is applied via the CSS property "background".

To optimize and compress your CSS code, you can use our [online CSS compressor and optimizer](#) based on csstidy. If you want to create a linear or radial gradient as background or border, check our [CSS Gradient Generator](#).



Hey! You found this booklet interesting? Support Converting Colors with the new Membership Option!

The pro membership hides all ads, plus gives you double the colors in the color bucket, and more awesome pro features!

**[Learn more, Memberships starting at \\$2.50/m!](#)**

**Follow me  
on Twitter!**

@ConvertingColor