

# Converting Colors

Decimal(12682113)

Have a look what the booklet for  
Decimal(12682113) contains.

<b>Decimal(12682113)</b> .....	3
<i><b>Conversions</b></i> .....	4
<i><b>Details</b></i> .....	6
<i><b>Harmonies</b></i> .....	11
<i><b>Previews</b></i> .....	23
<i><b>Color Blindness Simulation</b></i> .....	26
<i><b>CSS Examples</b></i> .....	29

# **Color**

**Decimal(12682113)**

# Conversions

## Conversions Part 1

<b>Format</b>	<b>Color</b>
Hex	C18381
RGB	193, 131, 129
RGB Percent	76%, 51%, 51%
CMY	0.2431, 0.4863, 0.4941
CMYK	0.00, 0.32, 0.33, 0.24
HSL	2°, 34%, 63%
HSV	2°, 33%, 76%
XYZ	34.0711, 29.1550, 24.6006
YIQ	149.3100, 37.5940, 12.5220

# Conversions

## Conversions Part 2

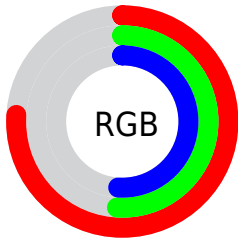
Format	Color
<a href="#">RYB</a>	<a href="#">193, 131, 129</a>
Decimal	<a href="#">12682113</a>
CIELab	<a href="#">60.92, 23.64, 10.81</a>
CIELCh	<a href="#">61, 25.992, 24.564</a>
Yxy	<a href="#">29.1550, 0.3879, 0.3320</a>
Android (android.graphics.Color)	<a href="#">4290872193 (0xFFC18381)</a>
YUV	<a href="#">149.3100, -10.0128, 38.3161</a>
Hunter-Lab	<a href="#">53.9954, 18.1414, 10.7839</a>

# Details

The Decimal color **12682113** is a light color, and the websafe version is hex **CC9999**. A complement of this color would be **8503233**, and the grayscale version is **9803157**.

A 20% lighter version of the original color is **16496822**, and **9064784** is the 20% darker color. If you saturate the color by 10%, you get **12677230**, and if you desaturate by 10%, it is **12686996**.

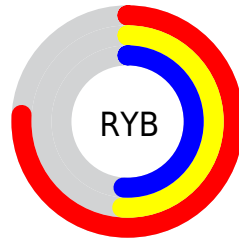
# Distribution



Red (76%)

Green (51%)

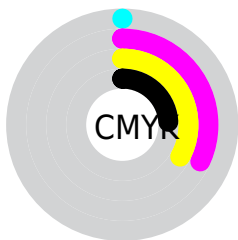
Blue (51%)



Red (76%)

Yellow (51%)

Blue (51%)

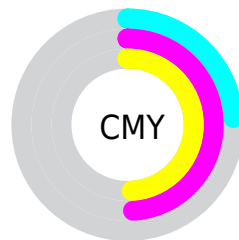


Cyan (0%)

Magenta (32%)

Yellow (33%)

Black (24%)



Cyan (24%)

Magenta (49%)

Yellow (49%)

# Brightness & Saturation Gradients

These gradients show how the Decimal color 12682113 changes by changing the brightness by 10 percent. The first figure shows a shift by +10% for each color and the second figure -10%.

Similar to the brightness gradients but the following saturation gradients show a change of the Decimal color 12682113 by changing the saturation by 10% instead.



 12682113

 12682113

16777215

 10840424

 16496822

 9064784

 16766161

 7289145

 16773614

 5579300

 3935246

 2555905

 0

 12682113

 12682113

 12677230

 12686996

 12672602

 12691624

 12667719

 12696507

 12662836

 12701390

 12658208

 12706018

 12653325

 12710901

 12649984

 12713983

# Harmonies

## Analogous

The Analogous color harmony consists of three colors that are next to each other on the color wheel.



12419736



12682113



12159086

# Triad

The Triadic color harmony groups three colors that are evenly spaced from another and form a triangle on the color wheel.



12682113



7708024



7313088

# Complementary

The Complementary color scheme is a pair of colors which are on the opposite of each other on the color wheel.



12682113



8503233

# Split Complementary

Split-complementary colors differ from the complementary color scheme. The scheme consists of three colors, the original color and two neighbors of the complement color.



5479608



12682113



6070158

# Square

The Square scheme is like the rectangle color scheme, but the four colors are evenly spaced on the color wheel.



12682113



9475945



4956069



9539517

# Rectangle

The Rectangle color scheme consists of four colors that form a rectangle on the color wheel.



12682113



11439463



4956069



6658495

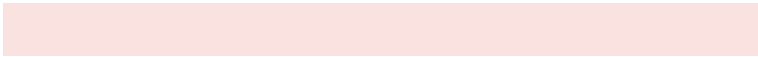


# Sweetspot

The Sweet Spot groups the original color and five complimentary colors.



12682113



16442081



12681664



8220270



16579836



8224125



# Same Dimension

The Same Dimension uses a secret algorithm to generate beautiful new colors.



12682113



16423318



12690049



6379607



10552576



2162944



# Inverse Universe

The Inverse Universe completely reimagines the original color for something new.



8503233



9893882



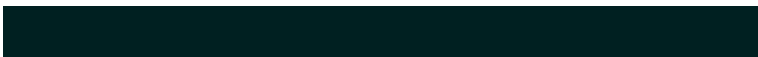
8495297



5726561



40097

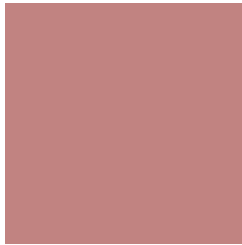


8225



# Previews

## White Background



This preview shows how the Decimal color 12682113 looks on a white background.

## Color Contrast Check

Large Text (above 18pt) WCAG AA ✓ Pass

Any Text WCAG AA ✗ Fail

Large Text (above 18pt) WCAG AAA ✗ Fail

Any Text WCAG AAA ✗ Fail

# Black Background



This preview shows how the Decimal color 12682113 looks on a black background.

## Color Contrast Check

Large Text (above 18pt) WCAG AA ✓ Pass

Any Text WCAG AA ✓ Pass

Large Text (above 18pt) WCAG AAA ✓ Pass

Any Text WCAG AAA × Fail

If you want to check with other color combinations, try the [Color Contrast Checker](#).



## Decimal 12682113 Background



This preview shows how black text looks on a background with the Decimal color 12682113.



This preview shows how white text looks on a background with the Decimal color 12682113.

# Color Blindness Simulation

Color vision deficiency is a very complex topic, and I could not describe the different causes any better than Wikipedia does, so if you want to learn more, you should check out their [article about color blindness](#).

## Dichromacy



**Original Color**  
12682113

**Protanopia**  
9999241

**Deuteranopia**  
11112063



**Tritanopia**  
12747147

# Trichromacy



**Original Color**  
12682113

**Protanomaly**  
10980742

**Deuteranomaly**  
11700864

**Tritanomaly**  
12747399

# Monochromacy



**Original Color**  
12682113

**Achromatopsia**  
9803157

**Achromatomaly**  
10849934

# CSS Examples

## Text

The CSS property to change the color of the text to Decimal 12682113 is called "color". The color property can be set on classes, ids or directly on the HTML element.

This example shows how text in the color #C18381 looks like.

```
.text, #text, p{  
    color:#C18381  
}
```

If you want to add a text shadow in that color use the text-shadow property, you can generate a text shadow directly with our [CSS Text Shadow Generator](#).

Here you see how black text with a 4 pixel #C18381 colored shadow looks like.

```
.shadow{ text-shadow: 4px 4px 2px #C18381
}
```

## Border

The CSS property to change the border of an element to Decimal 12682113 is called "border". The border property can be set on classes, ids or directly on the HTML element.

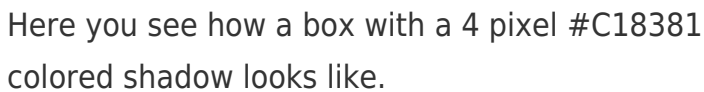
This example shows the color as border, it can be applied via the CSS property "border" or "border-color".

```
.border, #border, table{ border:4px solid
#C18381 }
```

If only the border color should be changed use the property `border-color`.

```
.border{ border-color:#C18381 }
```

If you want to add a box shadow in that color use:



Here you see how a box with a 4 pixel #C18381 colored shadow looks like.

```
.boxshadow{ -moz-box-shadow:4px 4px 4px  
4px #C18381; -webkit-box-shadow:4px 4px  
4px 4px #C18381; box-shadow:4px 4px 4px  
4px #C18381 }
```

# Background

The CSS property to change the background color of an element to Decimal 12682113 is called "background". The background property can be set on classes, ids or directly on the HTML element.

```
.background, #background, body{  
background:#C18381 }
```

If only the background color should be changed can be used:

```
.background{ background-color:#C18381 }
```

This example shows the color as background, it is applied via the CSS property "background".

To optimize and compress your CSS code, you can use our [online CSS compressor and optimizer](#) based on csstidy. If you want to create a linear or radial gradient as background or border, check our [CSS Gradient Generator](#).



Hey! You found this booklet interesting? Support Converting Colors with the new Membership Option!

The pro membership hides all ads, plus gives you double the colors in the color bucket, and more awesome pro features!

**[Learn more, Memberships starting at \\$2.50/m!](#)**

**Follow me  
on Twitter!**

@ConvertingColor