

Converting Colors

Decimal(12682616)

Have a look what the booklet for
Decimal(12682616) contains.

Decimal(12682616)	3
<i>Conversions</i>	4
<i>Details</i>	6
<i>Harmonies</i>	11
<i>Previews</i>	23
<i>Color Blindness Simulation</i>	26
<i>CSS Examples</i>	29

Color

Decimal(12682616)

Conversions

Conversions Part 1

Format	Color
Hex	C18578
RGB	193, 133, 120
RGB Percent	76%, 52%, 47%
CMY	0.2431, 0.4784, 0.5294
CMYK	0.00, 0.31, 0.38, 0.24
HSL	11°, 37%, 61%
HSV	11°, 38%, 76%
XYZ	33.7700, 29.4686, 21.6774
YIQ	149.4580, 39.9330, 8.6770

Conversions

Conversions Part 2

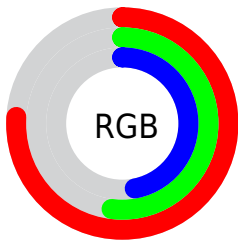
Format	Color
RYB	193, 136, 120
Decimal	12682616
CIELab	61.19, 21.41, 16.31
CIELCh	61, 26.910, 37.303
Yxy	29.4686, 0.3977, 0.3470
Android (android.graphics.Color)	4290872696 (0xFFC18578)
YUV	149.4580, -14.5228, 38.1863
Hunter-Lab	54.2850, 16.0440, 14.3234

Details

The Decimal color **12682616** is a light color, and the websafe version is hex **CC9999**. A complement of this color would be **7910593**, and the grayscale version is **9868950**.

A 20% lighter version of the original color is **16497324**, and **8999751** is the 20% darker color. If you saturate the color by 10%, you get **12678501**, and if you desaturate by 10%, it is **12686731**.

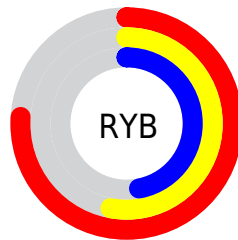
Distribution



Red (76%)

Green (52%)

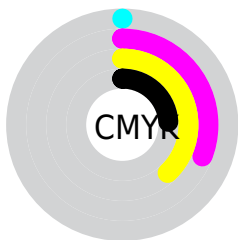
Blue (47%)



Red (76%)

Yellow (53%)

Blue (47%)

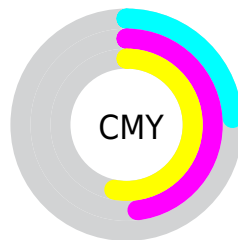


Cyan (0%)

Magenta (31%)

Yellow (38%)

Black (24%)



Cyan (24%)

Magenta (48%)

Yellow (53%)

Brightness & Saturation Gradients

These gradients show how the Decimal color 12682616 changes by changing the brightness by 10 percent. The first figure shows a shift by +10% for each color and the second figure -10%.

Similar to the brightness gradients but the following saturation gradients show a change of the Decimal color 12682616 by changing the saturation by 10% instead.

 12682616

 12682616

16777215

 10840927

 16497324

 8999751

 16766664

 7289649

 16774116

 5580060

 3936002

 2490368

 0

 12682616

 12682616

 12678501

 12686731

 12674385

 12690847

 12670270

 12694962

 12666411

 12698821

 12662295

 12702937

 12658180

 12707052

 12657152

 12711167

 12713983

Harmonies

Analogous

The Analogous color harmony consists of three colors that are next to each other on the color wheel.



12812943



12682616



11832424

Triad

The Triadic color harmony groups three colors that are evenly spaced from another and form a triangle on the color wheel.



12682616



6922113



8230083

Complementary

The Complementary color scheme is a pair of colors which are on the opposite of each other on the color wheel.



12682616



7910593

Split Complementary

Split-complementary colors differ from the complementary color scheme. The scheme consists of three colors, the original color and two neighbors of the complement color.



6003647



12682616



5284249

Square

The Square scheme is like the rectangle color scheme, but the four colors are evenly spaced on the color wheel.



12682616



8756077



4759728



10456250

Rectangle

The Rectangle color scheme consists of four colors that form a rectangle on the color wheel.



12682616



10916196



4759728



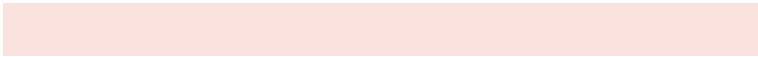
7444419

Sweetspot

The Sweet Spot groups the original color and five complimentary colors.



12682616



16442334



12679349



8220781



16579836



8224125

Same Dimension

The Same Dimension uses a secret algorithm to generate beautiful new colors.



12682616



16424329



12691832



6379863



10558720



2164224

Inverse Universe

The Inverse Universe completely reimagines the original color for something new.



7910593



9037562



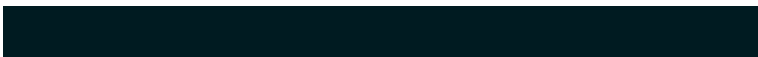
7901377



5726049



33953



6945

Previews

White Background



This preview shows how the Decimal color 12682616 looks on a white background.

Color Contrast Check

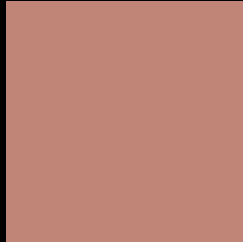
Large Text (above 18pt) WCAG AA ✓ Pass

Any Text WCAG AA ✗ Fail

Large Text (above 18pt) WCAG AAA ✗ Fail

Any Text WCAG AAA ✗ Fail

Black Background



This preview shows how the Decimal color 12682616 looks on a black background.

Color Contrast Check

Large Text (above 18pt) WCAG AA ✓ Pass

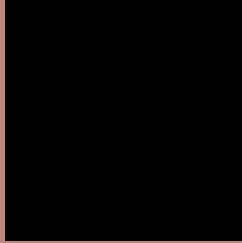
Any Text WCAG AA ✓ Pass

Large Text (above 18pt) WCAG AAA ✓ Pass

Any Text WCAG AAA × Fail

If you want to check with other color combinations, try the [Color Contrast Checker](#).

Decimal 12682616 Background



This preview shows how black text looks on a background with the Decimal color 12682616.




This preview shows how white text looks on a background with the Decimal color 12682616.

Color Blindness Simulation

Color vision deficiency is a very complex topic, and I could not describe the different causes any better than Wikipedia does, so if you want to learn more, you should check out their [article about color blindness](#).

Dichromacy





Tritanopia
12812940

Trichromacy



Original Color
12682616

Protanomaly
11112316

Deuteranomaly
11832183

Tritanomaly
12747653

Monochromacy



Original Color
12682616

Achromatopsia
9803157

Achromatomaly
10850186

CSS Examples

Text

The CSS property to change the color of the text to Decimal 12682616 is called "color". The color property can be set on classes, ids or directly on the HTML element.

This example shows how text in the color #C18578 looks like.

```
.text, #text, p{  
    color:#C18578  
}
```

If you want to add a text shadow in that color use the text-shadow property, you can generate a text shadow directly with our [CSS Text Shadow Generator](#).

Here you see how black text with a 4 pixel #C18578 colored shadow looks like.

```
.shadow{ text-shadow: 4px 4px 2px #C18578
}
```

Border

The CSS property to change the border of an element to Decimal 12682616 is called "border". The border property can be set on classes, ids or directly on the HTML element.

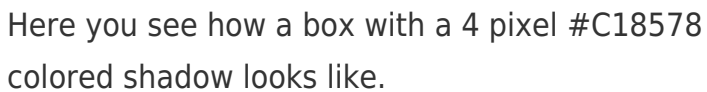
This example shows the color as border, it can be applied via the CSS property "border" or "border-color".

```
.border, #border, table{ border:4px solid
#C18578 }
```

If only the border color should be changed use the property `border-color`.

```
.border{ border-color:#C18578 }
```

If you want to add a box shadow in that color use:



Here you see how a box with a 4 pixel #C18578 colored shadow looks like.

```
.boxshadow{ -moz-box-shadow:4px 4px 4px  
4px #C18578; -webkit-box-shadow:4px 4px  
4px 4px #C18578; box-shadow:4px 4px 4px  
4px #C18578 }
```

Background

The CSS property to change the background color of an element to Decimal 12682616 is called "background". The background property can be set on classes, ids or directly on the HTML element.

```
.background, #background, body{  
background:#C18578 }
```

If only the background color should be changed can be used:

```
.background{ background-color:#C18578 }
```

This example shows the color as background, it is applied via the CSS property "background".

To optimize and compress your CSS code, you can use our [online CSS compressor and optimizer](#) based on csstidy. If you want to create a linear or radial gradient as background or border, check our [CSS Gradient Generator](#).

Hey! You found this booklet interesting? Support Converting Colors with the new Membership Option!

The pro membership hides all ads, plus gives you double the colors in the color bucket, and more awesome pro features!

[Learn more, Memberships starting at \\$2.50/m!](#)

**Follow me
on Twitter!**

@ConvertingColor