

# Converting Colors

Decimal(12683129)

Have a look what the booklet for  
Decimal(12683129) contains.

<b>Decimal(12683129)</b> .....	3
<i><b>Conversions</b></i> .....	4
<i><b>Details</b></i> .....	6
<i><b>Harmonies</b></i> .....	11
<i><b>Previews</b></i> .....	23
<i><b>Color Blindness Simulation</b></i> .....	26
<i><b>CSS Examples</b></i> .....	29

# **Color**

**Decimal(12683129)**

# Conversions

## Conversions Part 1

<b>Format</b>	<b>Color</b>
Hex	C18779
RGB	193, 135, 121
RGB Percent	76%, 53%, 47%
CMY	0.2431, 0.4706, 0.5255
CMYK	0.00, 0.30, 0.37, 0.24
HSL	12°, 37%, 62%
HSV	12°, 37%, 76%
XYZ	34.1075, 30.0459, 22.0909
YIQ	150.7460, 39.0620, 7.9420

# Conversions

## Conversions Part 2

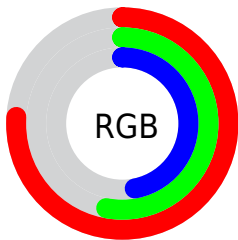
Format	Color
<a href="#">RYB</a>	<a href="#">193, 138, 121</a>
Decimal	<a href="#">12683129</a>
CIELab	<a href="#">61.69, 20.42, 16.43</a>
CIELCh	<a href="#">62, 26.214, 38.823</a>
Yxy	<a href="#">30.0459, 0.3955, 0.3484</a>
Android (android.graphics.Color)	<a href="#">4290873209 (0xFFC18779)</a>
YUV	<a href="#">150.7460, -14.6648, 37.0568</a>
Hunter-Lab	<a href="#">54.8141, 15.1449, 14.4751</a>

# Details

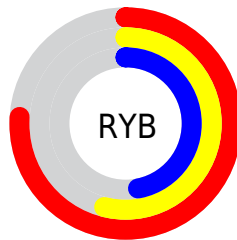
The Decimal color **12683129** is a light color, and the websafe version is hex **CC9999**. A complement of this color would be **7975873**, and the grayscale version is **9934743**.

A 20% lighter version of the original color is **16498093**, and **9065800** is the 20% darker color. If you saturate the color by 10%, you get **12679014**, and if you desaturate by 10%, it is **12687244**.

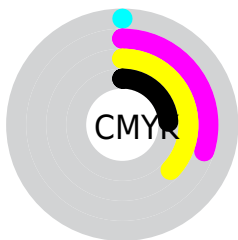
# Distribution



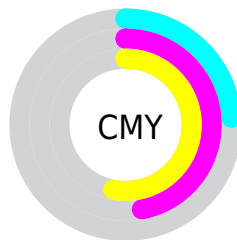
- Red (76%)
- Green (53%)
- Blue (47%)



- Red (76%)
- Yellow (54%)
- Blue (47%)



- Cyan (0%)
- Magenta (30%)
- Yellow (37%)
- Black (24%)



- Cyan (24%)
- Magenta (47%)
- Yellow (53%)

# Brightness & Saturation Gradients

These gradients show how the Decimal color 12683129 changes by changing the brightness by 10 percent. The first figure shows a shift by +10% for each color and the second figure -10%.

Similar to the brightness gradients but the following saturation gradients show a change of the Decimal color 12683129 by changing the saturation by 10% instead.



 12683129

 12683129

16777215

 10841440

 16498093

 9065800

 16767177

 7290162

 16774629

 5580573

 3936516

 2490368

 0

 12683129

 12683129

 12679014

 12687244

 12675154

 12691104

 12671039

 12695219

 12667180

 12699078

 12663065

 12703194

 12659205

 12707053

 12658176

 12711167

 12713983

# Harmonies

## Analogous

The Analogous color harmony consists of three colors that are next to each other on the color wheel.



12813455



12683129



11832938

# Triad

The Triadic color harmony groups three colors that are evenly spaced from another and form a triangle on the color wheel.



12683129



6988164



8492483

# Complementary

The Complementary color scheme is a pair of colors which are on the opposite of each other on the color wheel.



12683129



7975873

# Split Complementary

Split-complementary colors differ from the complementary color scheme. The scheme consists of three colors, the original color and two neighbors of the complement color.



6331584



12683129



5481115

# Square

The Square scheme is like the rectangle color scheme, but the four colors are evenly spaced on the color wheel.



12683129



8756336



5087409



10587577

# Rectangle

The Rectangle color scheme consists of four colors that form a rectangle on the color wheel.



12683129



10916711



5087409



7772099

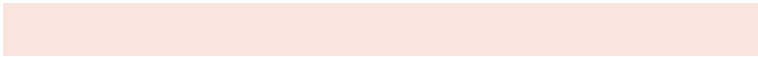


# Sweetspot

The Sweet Spot groups the original color and five complimentary colors.



12683129



16442590



12679604



8220781



16579836



8224125



# Same Dimension

The Same Dimension uses a secret algorithm to generate beautiful new colors.



12683129



16424841



12692089



6379863



10559232



2164224



# Inverse Universe

The Inverse Universe completely reimagines the original color for something new.



7975873



9037050



7966913



5726049



33185



6945



# Previews

## White Background



This preview shows how the Decimal color 12683129 looks on a white background.

## Color Contrast Check

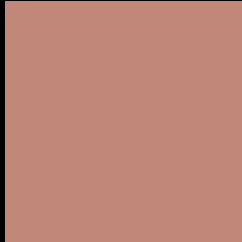
Large Text (above 18pt) WCAG AA ✓ Pass

Any Text WCAG AA × Fail

Large Text (above 18pt) WCAG AAA × Fail

Any Text WCAG AAA × Fail

# Black Background



This preview shows how the Decimal color 12683129 looks on a black background.

## Color Contrast Check

Large Text (above 18pt) WCAG AA ✓ Pass

Any Text WCAG AA ✓ Pass

Large Text (above 18pt) WCAG AAA ✓ Pass

Any Text WCAG AAA ✓ Pass

If you want to check with other color combinations, try the [Color Contrast Checker](#).



## Decimal 12683129 Background



This preview shows how black text looks on a background with the Decimal color 12683129.



This preview shows how white text looks on a background with the Decimal color 12683129.

# Color Blindness Simulation

Color vision deficiency is a very complex topic, and I could not describe the different causes any better than Wikipedia does, so if you want to learn more, you should check out their [article about color blindness](#).

## Dichromacy



**Original Color**  
12683129

**Protanopia**  
10327424

**Deuteranopia**  
11439991



**Tritanopia**  
12813454

# Trichromacy



**Original Color**  
12683129

**Protanomaly**  
11178109

**Deuteranomaly**  
11897976

**Tritanomaly**  
12748166

# Monochromacy



**Original Color**  
12683129

**Achromatopsia**  
9934743

**Achromatomaly**  
10916236

# CSS Examples

## Text

The CSS property to change the color of the text to Decimal 12683129 is called "color". The color property can be set on classes, ids or directly on the HTML element.

This example shows how text in the color #C18779 looks like.

```
.text, #text, p{  
    color:#C18779  
}
```

If you want to add a text shadow in that color use the text-shadow property, you can generate a text shadow directly with our [CSS Text Shadow Generator](#).

Here you see how black text with a 4 pixel #C18779 colored shadow looks like.

```
.shadow{ text-shadow: 4px 4px 2px #C18779
}
```

## Border

The CSS property to change the border of an element to Decimal 12683129 is called "border". The border property can be set on classes, ids or directly on the HTML element.

This example shows the color as border, it can be applied via the CSS property "border" or "border-color".

```
.border, #border, table{ border:4px solid
#C18779 }
```

If only the border color should be changed use the property `border-color`.

```
.border{ border-color:#C18779 }
```

If you want to add a box shadow in that color use:

Here you see how a box with a 4 pixel #C18779 colored shadow looks like.

```
.boxshadow{ -moz-box-shadow:4px 4px 4px  
4px #C18779; -webkit-box-shadow:4px 4px  
4px 4px #C18779; box-shadow:4px 4px 4px  
4px #C18779 }
```

# Background

The CSS property to change the background color of an element to Decimal 12683129 is called "background". The background property can be set on classes, ids or directly on the HTML element.

```
.background, #background, body{  
background:#C18779 }
```

If only the background color should be changed can be used:

```
.background{ background-color:#C18779 }
```

This example shows the color as background, it is applied via the CSS property "background".

To optimize and compress your CSS code, you can use our [online CSS compressor and optimizer](#) based on csstidy. If you want to create a linear or radial gradient as background or border, check our [CSS Gradient Generator](#).



Hey! You found this booklet interesting? Support Converting Colors with the new Membership Option!

The pro membership hides all ads, plus gives you double the colors in the color bucket, and more awesome pro features!

**[Learn more, Memberships starting at \\$2.50/m!](#)**

**Follow me  
on Twitter!**

@ConvertingColor