

Converting Colors

Decimal(12685699)

Have a look what the booklet for
Decimal(12685699) contains.

Decimal(12685699)	3
<i>Conversions</i>	4
<i>Details</i>	6
<i>Harmonies</i>	11
<i>Previews</i>	23
<i>Color Blindness Simulation</i>	26
<i>CSS Examples</i>	29

Color

Decimal(12685699)

Conversions

Conversions Part 1

Format	Color
Hex	C19183
RGB	193, 145, 131
RGB Percent	76%, 57%, 51%
CMY	0.2431, 0.4314, 0.4863
CMYK	0.00, 0.25, 0.32, 0.24
HSL	14°, 33%, 64%
HSV	14°, 32%, 76%
XYZ	36.2145, 33.2269, 25.9775
YIQ	157.7560, 33.1020, 5.8220

Conversions

Conversions Part 2

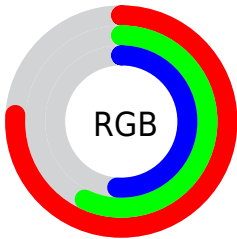
Format	Color
RYB	193, 149, 131
Decimal	12685699
CIELab	64.34, 16.17, 14.48
CIELCh	64, 21.705, 41.847
Yxy	33.2269, 0.3795, 0.3482
Android (android.graphics.Color)	4290875779 (0xFFC19183)
YUV	157.7560, -13.1907, 30.9090
Hunter-Lab	57.6428, 11.2688, 13.6302

Details

The Decimal color **12685699** is a light color, and the websafe version is hex **CC9999**. A complement of this color would be **8631233**, and the grayscale version is **10395294**.

A 20% lighter version of the original color is **16500664**, and **9068114** is the 20% darker color. If you saturate the color by 10%, you get **12681840**, and if you desaturate by 10%, it is **12689558**.

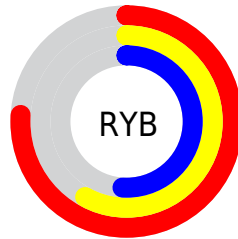
Distribution



Red (76%)

Green (57%)

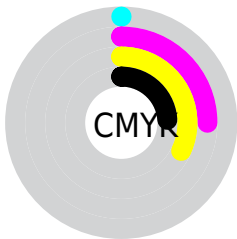
Blue (51%)



Red (76%)

Yellow (58%)

Blue (51%)

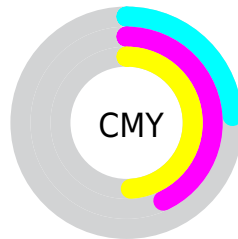


Cyan (0%)

Magenta (25%)

Yellow (32%)

Black (24%)



Cyan (24%)

Magenta (43%)

Yellow (49%)

Brightness & Saturation Gradients

These gradients show how the Decimal color 12685699 changes by changing the brightness by 10 percent. The first figure shows a shift by +10% for each color and the second figure -10%.

Similar to the brightness gradients but the following saturation gradients show a change of the Decimal color 12685699 by changing the saturation by 10% instead.

 12685699

 12685699

16777215

 10844010

 16500664

 9068114

 16770004

 7358011

 16777200

 5648421

 4004368

 2556672

 0

 12685699

 12685699

 12681840

 12689558

 12677980

 12693418

 12674121

 12697277

 12670262

 12701136

 12666402

 12704995

 12662543

 12708855

 12659712

 12712703

 12713983

Harmonies

Analogous

The Analogous color harmony consists of three colors that are next to each other on the color wheel.



12881557



12685699



11900792

Triad

The Triadic color harmony groups three colors that are evenly spaced from another and form a triangle on the color wheel.



12685699



7841423



9411522

Complementary

The Complementary color scheme is a pair of colors which are on the opposite of each other on the color wheel.



12685699



8631233

Split Complementary

Split-complementary colors differ from the complementary color scheme. The scheme consists of three colors, the original color and two neighbors of the complement color.



7774656



12685699



6858659

Square

The Square scheme is like the rectangle color scheme, but the four colors are evenly spaced on the color wheel.



12685699



9282431



6727093



11113657

Rectangle

The Rectangle color scheme consists of four colors that form a rectangle on the color wheel.



12685699



11115381



6727093



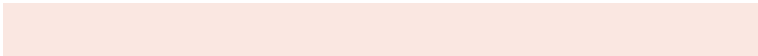
8822210

Sweetspot

The Sweet Spot groups the original color and five complimentary colors.



12685699



16443361



12682164



8221038



16579836



8224125

Same Dimension

The Same Dimension uses a secret algorithm to generate beautiful new colors.



12685699



16428696



12693379



6379863



10560512



2164480

Inverse Universe

The Inverse Universe completely reimagines the original color for something new.



8631233



10020090



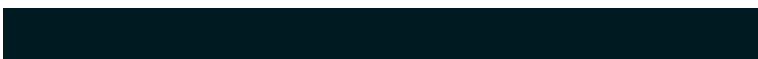
8623553



5726049



31905



6689

Previews

White Background



This preview shows how the Decimal color 12685699 looks on a white background.

Color Contrast Check

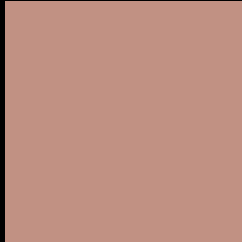
Large Text (above 18pt) WCAG AA × Fail

Any Text WCAG AA × Fail

Large Text (above 18pt) WCAG AAA × Fail

Any Text WCAG AAA × Fail

Black Background



This preview shows how the Decimal color 12685699 looks on a black background.

Color Contrast Check

Large Text (above 18pt) WCAG AA ✓ Pass

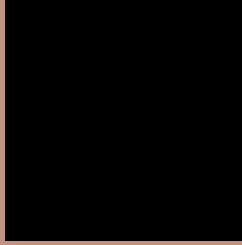
Any Text WCAG AA ✓ Pass

Large Text (above 18pt) WCAG AAA ✓ Pass

Any Text WCAG AAA ✓ Pass

If you want to check with other color combinations, try the [Color Contrast Checker](#).

Decimal 12685699 Background



This preview shows how black text looks on a background with the Decimal color 12685699.



This preview shows how white text looks on a background with the Decimal color 12685699.

Color Blindness Simulation

Color vision deficiency is a very complex topic, and I could not describe the different causes any better than Wikipedia does, so if you want to learn more, you should check out their [article about color blindness](#).

Dichromacy





Tritanopia
12816025

Trichromacy



Original Color
12685699

Protanomaly
11507846

Deuteranomaly
12162178

Tritanomaly
12750737

Monochromacy



Original Color
12685699

Achromatopsia
10395294

Achromatomaly
11245972

CSS Examples

Text

The CSS property to change the color of the text to Decimal 12685699 is called "color". The color property can be set on classes, ids or directly on the HTML element.

This example shows how text in the color #C19183 looks like.

```
.text, #text, p{  
    color:#C19183  
}
```

If you want to add a text shadow in that color use the text-shadow property, you can generate a text shadow directly with our [CSS Text Shadow Generator](#).

Here you see how black text with a 4 pixel #C19183 colored shadow looks like.

```
.shadow{ text-shadow: 4px 4px 2px #C19183
}
```

Border

The CSS property to change the border of an element to Decimal 12685699 is called "border". The border property can be set on classes, ids or directly on the HTML element.

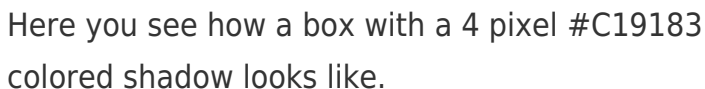
This example shows the color as border, it can be applied via the CSS property "border" or "border-color".

```
.border, #border, table{ border:4px solid
#C19183 }
```

If only the border color should be changed use the property `border-color`.

```
.border{ border-color:#C19183 }
```

If you want to add a box shadow in that color use:



Here you see how a box with a 4 pixel #C19183 colored shadow looks like.

```
.boxshadow{ -moz-box-shadow:4px 4px 4px  
4px #C19183; -webkit-box-shadow:4px 4px  
4px 4px #C19183; box-shadow:4px 4px 4px  
4px #C19183 }
```

Background

The CSS property to change the background color of an element to Decimal 12685699 is called "background". The background property can be set on classes, ids or directly on the HTML element.

```
.background, #background, body{  
background:#C19183 }
```

If only the background color should be changed can be used:

```
.background{ background-color:#C19183 }
```

This example shows the color as background, it is applied via the CSS property "background".

To optimize and compress your CSS code, you can use our [online CSS compressor and optimizer](#) based on csstidy. If you want to create a linear or radial gradient as background or border, check our [CSS Gradient Generator](#).

Hey! You found this booklet interesting? Support Converting Colors with the new Membership Option!

The pro membership hides all ads, plus gives you double the colors in the color bucket, and more awesome pro features!

[Learn more, Memberships starting at \\$2.50/m!](#)

**Follow me
on Twitter!**

@ConvertingColor