

Converting Colors

Decimal(12687518)

Have a look what the booklet for
Decimal(12687518) contains.

Decimal(12687518)	3
<i>Conversions</i>	4
<i>Details</i>	6
<i>Harmonies</i>	11
<i>Previews</i>	23
<i>Color Blindness Simulation</i>	26
<i>CSS Examples</i>	29

Color

Decimal(12687518)

Conversions

Conversions Part 1

Format	Color
Hex	C1989E
RGB	193, 152, 158
RGB Percent	76%, 60%, 62%
CMY	0.2431, 0.4039, 0.3804
CMYK	0.00, 0.21, 0.18, 0.24
HSL	351°, 25%, 68%
HSV	351°, 21%, 76%
XYZ	39.3921, 36.2626, 37.2709
YIQ	164.9430, 22.5100, 10.5580

Conversions

Conversions Part 2

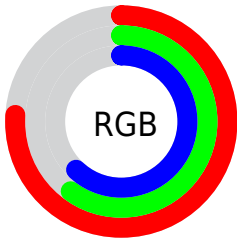
Format	Color
RYB	193, 152, 158
Decimal	12687518
CIELab	66.72, 16.23, 2.72
CIELCh	67, 16.460, 9.496
Yxy	36.2626, 0.3488, 0.3211
Android (android.graphics.Color)	4290877598 (0xFFC1989E)
YUV	164.9430, -3.4229, 24.6060
Hunter-Lab	60.2184, 11.3843, 5.4566

Details

The Decimal color **12687518** is a light color, and the websafe version is hex **CC9999**. A complement of this color would be **10011067**, and the grayscale version is **10855845**.

A 20% lighter version of the original color is **16436949**, and **9135467** is the 20% darker color. If you saturate the color by 10%, you get **12682638**, and if you desaturate by 10%, it is **12692398**.

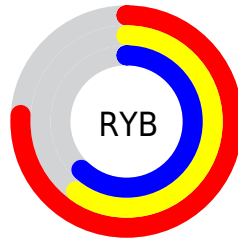
Distribution



Red (76%)

Green (60%)

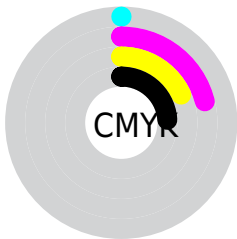
Blue (62%)



Red (76%)

Yellow (60%)

Blue (62%)

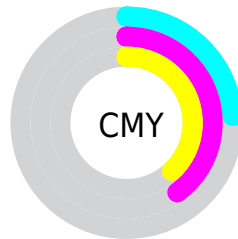


Cyan (0%)

Magenta (21%)

Yellow (18%)

Black (24%)



Cyan (24%)

Magenta (40%)

Yellow (38%)

Brightness & Saturation Gradients

These gradients show how the Decimal color 12687518 changes by changing the brightness by 10 percent. The first figure shows a shift by +10% for each color and the second figure -10%.

Similar to the brightness gradients but the following saturation gradients show a change of the Decimal color 12687518 by changing the saturation by 10% instead.

 12687518

 12687518

16777215

 10911364

 16436949

 9135467

 16772081

 7425363

 5781052

 4202534

 2689809

 327680

 0

 12687518

 12687518

 12682638

 12692398

 12677501

 12697535

 12672621

 12702415

 12667740

 12707296

 12662604

 12712432

 12657723

 12713983

 12652843

 12648476

Harmonies

Analogous

The Analogous color harmony consists of three colors that are next to each other on the color wheel.



12229037



12687518



12622480

Triad

The Triadic color harmony groups three colors that are evenly spaced from another and form a triangle on the color wheel.



12687518



10004363



8824766

Complementary

The Complementary color scheme is a pair of colors which are on the opposite of each other on the color wheel.



12687518



10011067

Split Complementary

Split-complementary colors differ from the complementary color scheme. The scheme consists of three colors, the original color and two neighbors of the complement color.



8170165



12687518



8956567

Square

The Square scheme is like the rectangle color scheme, but the four colors are evenly spaced on the color wheel.



12687518



11117445



8235943



10003135

Rectangle

The Rectangle color scheme consists of four colors that form a rectangle on the color wheel.



12687518



12295305



8235943



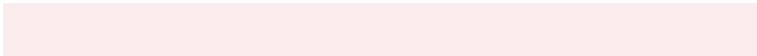
8497339

Sweetspot

The Sweet Spot groups the original color and five complimentary colors.



12687518



16444397



12294337



8221813



16579836



8224125

Same Dimension

The Same Dimension uses a secret algorithm to generate beautiful new colors.



12687518



16432069



12691096



6379353



10551320



2162693

Inverse Universe

The Inverse Universe completely reimagines the original color for something new.



12687518



16432069



10007489



6379353



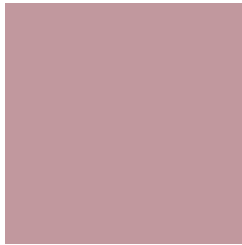
10551320



2162693

Previews

White Background



This preview shows how the Decimal color 12687518 looks on a white background.

Color Contrast Check

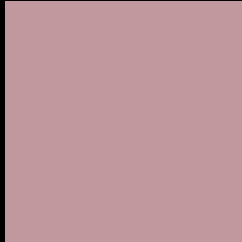
Large Text (above 18pt) WCAG AA × Fail

Any Text WCAG AA × Fail

Large Text (above 18pt) WCAG AAA × Fail

Any Text WCAG AAA × Fail

Black Background



This preview shows how the Decimal color 12687518 looks on a black background.

Color Contrast Check

Large Text (above 18pt) WCAG AA ✓ Pass

Any Text WCAG AA ✓ Pass

Large Text (above 18pt) WCAG AAA ✓ Pass

Any Text WCAG AAA ✓ Pass

If you want to check with other color combinations, try the [Color Contrast Checker](#).

Decimal 12687518 Background



This preview shows how black text looks on a background with the Decimal color 12687518.



This preview shows how white text looks on a background with the Decimal color 12687518.

Color Blindness Simulation

Color vision deficiency is a very complex topic, and I could not describe the different causes any better than Wikipedia does, so if you want to learn more, you should check out their [article about color blindness](#).

Dichromacy



Original Color
12687518

Protanopia
10855076

Deuteranopia
11836829



Tritanopia
12752803

Trichromacy



Original Color
12687518

Protanomaly
11509410

Deuteranomaly
12163997

Tritanomaly
12752801

Monochromacy



Original Color
12687518

Achromatopsia
10855845

Achromatomaly
11509922

CSS Examples

Text

The CSS property to change the color of the text to Decimal 12687518 is called "color". The color property can be set on classes, ids or directly on the HTML element.

This example shows how text in the color #C1989E looks like.

```
.text, #text, p{  
    color:#C1989E  
}
```

If you want to add a text shadow in that color use the text-shadow property, you can generate a text shadow directly with our [CSS Text Shadow Generator](#).

Here you see how black text with a 4 pixel #C1989E colored shadow looks like.

```
.shadow{ text-shadow: 4px 4px 2px #C1989E
}
```

Border

The CSS property to change the border of an element to Decimal 12687518 is called "border". The border property can be set on classes, ids or directly on the HTML element.

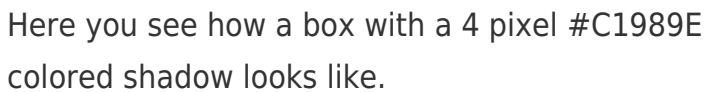
This example shows the color as border, it can be applied via the CSS property "border" or "border-color".

```
.border, #border, table{ border:4px solid
#C1989E }
```

If only the border color should be changed use the property `border-color`.

```
.border{ border-color:#C1989E }
```

If you want to add a box shadow in that color use:



Here you see how a box with a 4 pixel #C1989E colored shadow looks like.

```
.boxshadow{ -moz-box-shadow:4px 4px 4px  
4px #C1989E; -webkit-box-shadow:4px 4px  
4px 4px #C1989E; box-shadow:4px 4px 4px  
4px #C1989E }
```

Background

The CSS property to change the background color of an element to Decimal 12687518 is called "background". The background property can be set on classes, ids or directly on the HTML element.

```
.background, #background, body{  
background:#C1989E }
```

If only the background color should be changed can be used:

```
.background{ background-color:#C1989E }
```

This example shows the color as background, it is applied via the CSS property "background".

To optimize and compress your CSS code, you can use our [online CSS compressor and optimizer](#) based on csstidy. If you want to create a linear or radial gradient as background or border, check our [CSS Gradient Generator](#).

Hey! You found this booklet interesting? Support Converting Colors with the new Membership Option!

The pro membership hides all ads, plus gives you double the colors in the color bucket, and more awesome pro features!

[Learn more, Memberships starting at \\$2.50/m!](#)

**Follow me
on Twitter!**

@ConvertingColor