

Converting Colors

Decimal(12688774)

Have a look what the booklet for
Decimal(12688774) contains.

Decimal(12688774)	3
<i>Conversions</i>	4
<i>Details</i>	6
<i>Harmonies</i>	11
<i>Previews</i>	23
<i>Color Blindness Simulation</i>	26
<i>CSS Examples</i>	29

Color

Decimal(12688774)

Conversions

Conversions Part 1

Format	Color
Hex	C19D86
RGB	193, 157, 134
RGB Percent	76%, 62%, 53%
CMY	0.2431, 0.3843, 0.4745
CMYK	0.00, 0.19, 0.31, 0.24
HSL	23°, 32%, 64%
HSV	23°, 31%, 76%
XYZ	38.3524, 37.1726, 27.7079
YIQ	165.1420, 28.8390, 0.4790

Conversions

Conversions Part 2

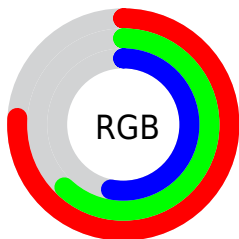
Format	Color
R_{YB}	193, 172, 134
Decimal	12688774
CIE _{Lab}	67.41, 9.97, 17.06
CIE _{LCh}	67, 19.762, 59.711
Yxy	37.1726, 0.3715, 0.3601
Android (android.graphics.Color)	4290878854 (0xFFC19D86)
YUV	165.1420, -15.3530, 24.4315
Hunter-Lab	60.9694, 5.5878, 15.7338

Details

The Decimal color **12688774** is a light color, and the websafe version is hex **CC9999**. A complement of this color would be **8825537**, and the grayscale version is **10855845**.

A 20% lighter version of the original color is **16438459**, and **9071188** is the 20% darker color. If you saturate the color by 10%, you get **12685683**, and if you desaturate by 10%, it is **12691865**.

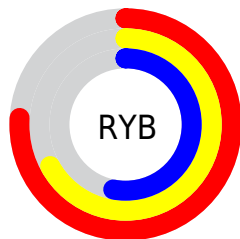
Distribution



Red (76%)

Green (62%)

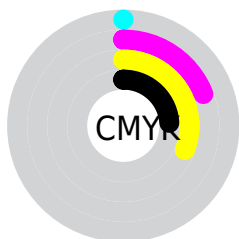
Blue (53%)



Red (76%)

Yellow (67%)

Blue (53%)

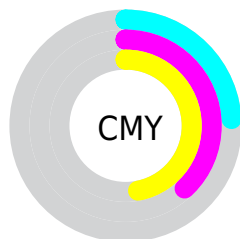


Cyan (0%)

Magenta (19%)

Yellow (31%)

Black (24%)



Cyan (24%)

Magenta (38%)

Yellow (47%)

Brightness & Saturation Gradients

These gradients show how the Decimal color 12688774 changes by changing the brightness by 10 percent. The first figure shows a shift by +10% for each color and the second figure -10%.

Similar to the brightness gradients but the following saturation gradients show a change of the Decimal color 12688774 by changing the saturation by 10% instead.

 12688774

 12688774

16777215

 10847085

 16438459

 9071188

 16773335

 7361085

 16777203

 5716519

 4072722

 2625536

 0

 12688774

 12688774

 12685683

 12691865

 12682591

 12694957

 12679756

 12697792

 12676665

 12700883

 12673574

 12703975

 12670482

 12707066

 12667648

 12709887

 12712959

 12713983

Harmonies

Analogous

The Analogous color harmony consists of three colors that are next to each other on the color wheel.



13212051



12688774



11707265

Triad

The Triadic color harmony groups three colors that are evenly spaced from another and form a triangle on the color wheel.



12688774



8040099



10985667

Complementary

The Complementary color scheme is a pair of colors which are on the opposite of each other on the color wheel.



12688774



8825537

Split Complementary

Split-complementary colors differ from the complementary color scheme. The scheme consists of three colors, the original color and two neighbors of the complement color.



9414343



12688774



7581365

Square

The Square scheme is like the rectangle color scheme, but the four colors are evenly spaced on the color wheel.



12688774



9088146



8104898



12294838

Rectangle

The Rectangle color scheme consists of four colors that form a rectangle on the color wheel.



12688774



10856323



8104898



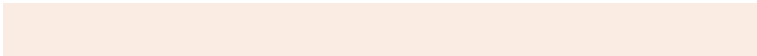
10461893

Sweetspot

The Sweet Spot groups the original color and five complimentary colors.



12688774



16444643



12682922



8222063



16579836



8224125

Same Dimension

The Same Dimension uses a secret algorithm to generate beautiful new colors.



12688774



16433565



12696198



6380375



10567424



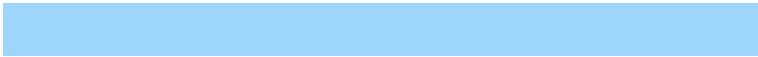
2166016

Inverse Universe

The Inverse Universe completely reimagines the original color for something new.



8825537



10344186



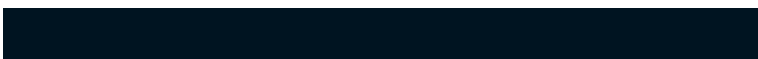
8818113



5725537



25249



5153

Previews

White Background



This preview shows how the Decimal color 12688774 looks on a white background.

Color Contrast Check

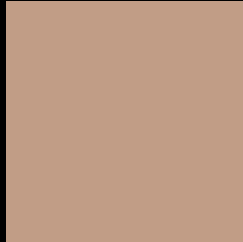
Large Text (above 18pt) WCAG AA × Fail

Any Text WCAG AA × Fail

Large Text (above 18pt) WCAG AAA × Fail

Any Text WCAG AAA × Fail

Black Background



This preview shows how the Decimal color 12688774 looks on a black background.

Color Contrast Check

Large Text (above 18pt) WCAG AA ✓ Pass

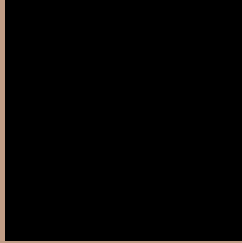
Any Text WCAG AA ✓ Pass

Large Text (above 18pt) WCAG AAA ✓ Pass

Any Text WCAG AAA ✓ Pass

If you want to check with other color combinations, try the [Color Contrast Checker](#).

Decimal 12688774 Background



This preview shows how black text looks on a background with the Decimal color 12688774.



This preview shows how white text looks on a background with the Decimal color 12688774.

Color Blindness Simulation

Color vision deficiency is a very complex topic, and I could not describe the different causes any better than Wikipedia does, so if you want to learn more, you should check out their [article about color blindness](#).


Dichromacy



Original Color
12688774

Protanopia
11379849

Deuteranopia
12557958



Tritanopia
12884388

Trichromacy



Original Color
12688774

Protanomaly
11837832

Deuteranomaly
12623494

Tritanomaly
12819097

Monochromacy



Original Color
12688774

Achromatopsia
10855845

Achromatomaly
11510426

CSS Examples

Text

The CSS property to change the color of the text to Decimal 12688774 is called "color". The color property can be set on classes, ids or directly on the HTML element.

This example shows how text in the color #C19D86 looks like.

```
.text, #text, p{  
    color:#C19D86  
}
```

If you want to add a text shadow in that color use the text-shadow property, you can generate a text shadow directly with our [CSS Text Shadow Generator](#).

Here you see how black text with a 4 pixel #C19D86 colored shadow looks like.

```
.shadow{ text-shadow: 4px 4px 2px #C19D86
}
```

Border

The CSS property to change the border of an element to Decimal 12688774 is called "border". The border property can be set on classes, ids or directly on the HTML element.

This example shows the color as border, it can be applied via the CSS property "border" or "border-color".

```
.border, #border, table{ border:4px solid
#C19D86 }
```

If only the border color should be changed use the property `border-color`.

```
.border{ border-color:#C19D86 }
```

If you want to add a box shadow in that color use:

Here you see how a box with a 4 pixel #C19D86 colored shadow looks like.

```
.boxshadow{ -moz-box-shadow:4px 4px 4px  
4px #C19D86; -webkit-box-shadow:4px 4px  
4px 4px #C19D86; box-shadow:4px 4px 4px  
4px #C19D86 }
```

Background

The CSS property to change the background color of an element to Decimal 12688774 is called "background". The background property can be set on classes, ids or directly on the HTML element.

```
.background, #background, body{  
background:#C19D86 }
```

If only the background color should be changed can be used:

```
.background{ background-color:#C19D86 }
```

This example shows the color as background, it is applied via the CSS property "background".

To optimize and compress your CSS code, you can use our [online CSS compressor and optimizer](#) based on csstidy. If you want to create a linear or radial gradient as background or border, check our [CSS Gradient Generator](#).

Hey! You found this booklet interesting? Support Converting Colors with the new Membership Option!

The pro membership hides all ads, plus gives you double the colors in the color bucket, and more awesome pro features!

[Learn more, Memberships starting at \\$2.50/m!](#)

**Follow me
on Twitter!**

@ConvertingColor