

Converting Colors

Decimal(12689003)

Have a look what the booklet for
Decimal(12689003) contains.

Decimal(12689003)	3
<i>Conversions</i>	4
<i>Details</i>	6
<i>Harmonies</i>	11
<i>Previews</i>	23
<i>Color Blindness Simulation</i>	26
<i>CSS Examples</i>	29

Color

Decimal(12689003)

Conversions

Conversions Part 1

Format	Color
Hex	C19E6B
RGB	193, 158, 107
RGB Percent	76%, 62%, 42%
CMY	0.2431, 0.3804, 0.5804
CMYK	0.00, 0.18, 0.45, 0.24
HSL	36°, 41%, 59%
HSV	36°, 45%, 76%
XYZ	36.8730, 36.8527, 19.0798
YIQ	162.6510, 37.2310, -8.4410

Conversions

Conversions Part 2

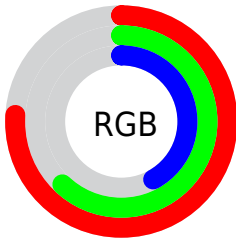
Format	Color
RYB	166, 193, 107
Decimal	12689003
CIELab	67.17, 6.19, 31.47
CIElCh	67, 32.075, 78.875
Yxy	36.8527, 0.3973, 0.3971
Android (android.graphics.Color)	4290879083 (0xFFC19E6B)
YUV	162.6510, -27.4359, 26.6161
Hunter-Lab	60.7064, 2.1844, 23.8599

Details

The Decimal color **12689003** is a light color, and the websafe version is hex **CC9966**. A complement of this color would be **7048897**, and the grayscale version is **10724259**.

A 20% lighter version of the original color is **16504223**, and **9071418** is the 20% darker color. If you saturate the color by 10%, you get **12686936**, and if you desaturate by 10%, it is **12691070**.

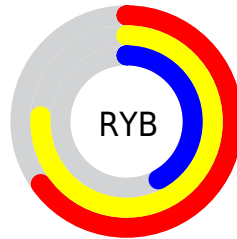
Distribution



Red (76%)

Green (62%)

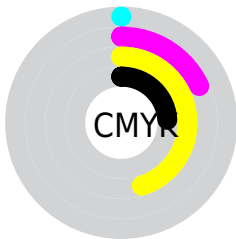
Blue (42%)



Red (65%)

Yellow (76%)

Blue (42%)

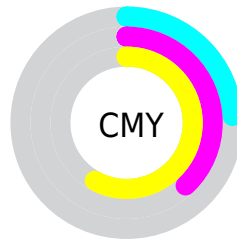


Cyan (0%)

Magenta (18%)

Yellow (45%)

Black (24%)



Cyan (24%)

Magenta (38%)

Yellow (58%)

Brightness & Saturation Gradients

These gradients show how the Decimal color 12689003 changes by changing the brightness by 10 percent. The first figure shows a shift by +10% for each color and the second figure -10%.

Similar to the brightness gradients but the following saturation gradients show a change of the Decimal color 12689003 by changing the saturation by 10% instead.

 12689003

 12689003

16777215

 10847314

 16504223

 9071418

 16773562

 7295780

 16777174

 5585933

 16777203

 3941888

 2298368

 0

 12689003

 12689003

 12686936

 12691070

12684868

12693138

12682801

12695205

12680990

12697016

12678923

12699083

12677632

12701151

12703218

12705279

12707327

Harmonies

Analogous

The Analogous color harmony consists of three colors that are next to each other on the color wheel.



13997177



12689003



10856300

Triad

The Triadic color harmony groups three colors that are evenly spaced from another and form a triangle on the color wheel.



12689003



4502453



12490442

Complementary

The Complementary color scheme is a pair of colors which are on the opposite of each other on the color wheel.



12689003



7048897

Split Complementary

Split-complementary colors differ from the complementary color scheme. The scheme consists of three colors, the original color and two neighbors of the complement color.



10002650



12689003



4632782

Square

The Square scheme is like the rectangle color scheme, but the four colors are evenly spaced on the color wheel.



12689003



6402967



7056092



13995951

Rectangle

The Rectangle color scheme consists of four colors that form a rectangle on the color wheel.



12689003



9416054



7056092



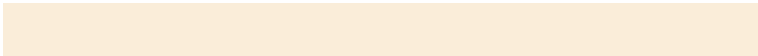
11704785

Sweetspot

The Sweet Spot groups the original color and five complimentary colors.



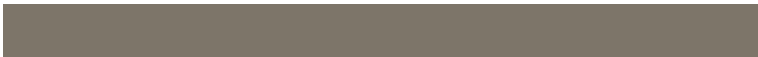
12689003



16444889



12675983



8222057



16579836



8224125

Same Dimension

The Same Dimension uses a secret algorithm to generate beautiful new colors.



12689003



16434293



12239211



6380887



10575616



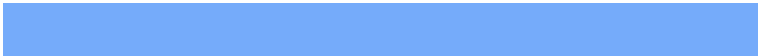
2167808

Inverse Universe

The Inverse Universe completely reimagines the original color for something new.



7048897



7711738



7498689



5725025



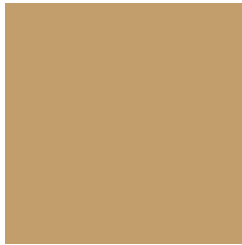
16801



3361

Previews

White Background



This preview shows how the Decimal color 12689003 looks on a white background.

Color Contrast Check

Large Text (above 18pt) WCAG AA × Fail

Any Text WCAG AA × Fail

Large Text (above 18pt) WCAG AAA × Fail

Any Text WCAG AAA × Fail

Black Background



This preview shows how the Decimal color 12689003 looks on a black background.

Color Contrast Check

Large Text (above 18pt) WCAG AA ✓ Pass

Any Text WCAG AA ✓ Pass

Large Text (above 18pt) WCAG AAA ✓ Pass

Any Text WCAG AAA ✓ Pass

If you want to check with other color combinations, try the [Color Contrast Checker](#).

Decimal 12689003 Background



This preview shows how black text looks on a background with the Decimal color 12689003.



This preview shows how white text looks on a background with the Decimal color 12689003.

Color Blindness Simulation

Color vision deficiency is a very complex topic, and I could not describe the different causes any better than Wikipedia does, so if you want to learn more, you should check out their [article about color blindness](#).


Dichromacy



Original Color
12689003

Protanopia
11641965

Deuteranopia
12950635



Tritanopia
13014947

Trichromacy



Original Color
12689003

Protanomaly
12034668

Deuteranomaly
12885355

Tritanomaly
12884623

Monochromacy



Original Color
12689003

Achromatopsia
10724259

Achromatomaly
11444623

CSS Examples

Text

The CSS property to change the color of the text to Decimal 12689003 is called "color". The color property can be set on classes, ids or directly on the HTML element.

This example shows how text in the color #C19E6B looks like.

```
.text, #text, p{  
    color:#C19E6B  
}
```

If you want to add a text shadow in that color use the text-shadow property, you can generate a text shadow directly with our [CSS Text Shadow Generator](#).

Here you see how black text with a 4 pixel #C19E6B colored shadow looks like.

```
.shadow{ text-shadow: 4px 4px 2px #C19E6B
}
```

Border

The CSS property to change the border of an element to Decimal 12689003 is called "border". The border property can be set on classes, ids or directly on the HTML element.

This example shows the color as border, it can be applied via the CSS property "border" or "border-color".

```
.border, #border, table{ border:4px solid
#C19E6B }
```

If only the border color should be changed use the property `border-color`.

```
.border{ border-color:#C19E6B }
```

If you want to add a box shadow in that color use:

Here you see how a box with a 4 pixel #C19E6B colored shadow looks like.

```
.boxshadow{ -moz-box-shadow:4px 4px 4px  
4px #C19E6B; -webkit-box-shadow:4px 4px  
4px 4px #C19E6B; box-shadow:4px 4px 4px  
4px #C19E6B }
```

Background

The CSS property to change the background color of an element to Decimal 12689003 is called "background". The background property can be set on classes, ids or directly on the HTML element.

```
.background, #background, body{  
background:#C19E6B }
```

If only the background color should be changed can be used:

```
.background{ background-color:#C19E6B }
```

This example shows the color as background, it is applied via the CSS property "background".

To optimize and compress your CSS code, you can use our [online CSS compressor and optimizer](#) based on csstidy. If you want to create a linear or radial gradient as background or border, check our [CSS Gradient Generator](#).

Hey! You found this booklet interesting? Support Converting Colors with the new Membership Option!

The pro membership hides all ads, plus gives you double the colors in the color bucket, and more awesome pro features!

[Learn more, Memberships starting at \\$2.50/m!](#)

**Follow me
on Twitter!**

@ConvertingColor