

Converting Colors

Decimal(12689041)

Have a look what the booklet for
Decimal(12689041) contains.

Decimal(12689041)	3
<i>Conversions</i>	4
<i>Details</i>	6
<i>Harmonies</i>	11
<i>Previews</i>	23
<i>Color Blindness Simulation</i>	26
<i>CSS Examples</i>	29

Color

Decimal(12689041)

Conversions

Conversions Part 1

Format	Color
Hex	C19E91
RGB	193, 158, 145
RGB Percent	76%, 62%, 57%
CMY	0.2431, 0.3804, 0.4314
CMYK	0.00, 0.18, 0.25, 0.24
HSL	16°, 28%, 66%
HSV	16°, 25%, 76%
XYZ	39.3300, 37.8355, 32.0181
YIQ	166.9830, 25.0330, 3.3770

Conversions

Conversions Part 2

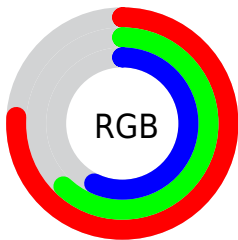
Format	Color
RYB	193, 163, 145
Decimal	12689041
CIELab	67.90, 10.96, 11.66
CIELCh	68, 15.997, 46.775
Yxy	37.8355, 0.3602, 0.3465
Android (android.graphics.Color)	4290879121 (0xFFC19E91)
YUV	166.9830, -10.8376, 22.8169
Hunter-Lab	61.5106, 6.4898, 12.1951

Details

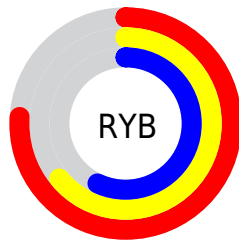
The Decimal color **12689041** is a light color, and the websafe version is hex **CC9999**. A complement of this color would be **9548993**, and the grayscale version is **10987431**.

A 20% lighter version of the original color is **16438727**, and **9136991** is the 20% darker color. If you saturate the color by 10%, you get **12685438**, and if you desaturate by 10%, it is **12692644**.

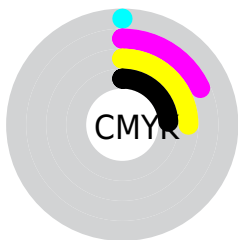
Distribution



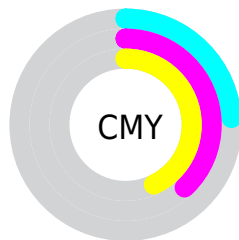
- Red (76%)
- Green (62%)
- Blue (57%)



- Red (76%)
- Yellow (64%)
- Blue (57%)



- Cyan (0%)
- Magenta (18%)
- Yellow (25%)
- Black (24%)



- Cyan (24%)
- Magenta (38%)
- Yellow (43%)

Brightness & Saturation Gradients

These gradients show how the Decimal color 12689041 changes by changing the brightness by 10 percent. The first figure shows a shift by +10% for each color and the second figure -10%.

Similar to the brightness gradients but the following saturation gradients show a change of the Decimal color 12689041 by changing the saturation by 10% instead.



12689041



12689041

16777215



10847351



16438727



9136991



16773603



7426631



5782320



4138268



2691329



327680



0



12689041



12689041

 12685438

 12692644

 12681834

 12696248

 12678231

 12699851

 12674628

 12703454

 12671025

 12707058

 12667421

 12710655

 12663562

 12713983

 12661760

Harmonies

Analogous

The Analogous color harmony consists of three colors that are next to each other on the color wheel.



12885150



12689041



12034698

Triad

The Triadic color harmony groups three colors that are evenly spaced from another and form a triangle on the color wheel.



12689041



9022878



10527937

Complementary

The Complementary color scheme is a pair of colors which are on the opposite of each other on the color wheel.



12689041



9548993

Split Complementary

Split-complementary colors differ from the complementary color scheme. The scheme consists of three colors, the original color and two neighbors of the complement color.



9349569



12689041



8433325

Square

The Square scheme is like the rectangle color scheme, but the four colors are evenly spaced on the color wheel.



12689041



10005393



8563898



11706297

Rectangle

The Rectangle color scheme consists of four colors that form a rectangle on the color wheel.



12689041



11445641



8563898



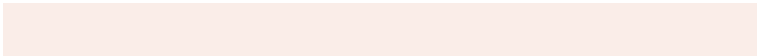
10135234

Sweetspot

The Sweet Spot groups the original color and five complimentary colors.



12689041



16444904



12685748



8222323



16579836



8224125

Same Dimension

The Same Dimension uses a secret algorithm to generate beautiful new colors.



12689041



16434095



12695185



6380119



10562560



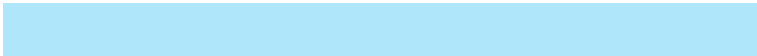
2164992

Inverse Universe

The Inverse Universe completely reimagines the original color for something new.



9548993



11527930



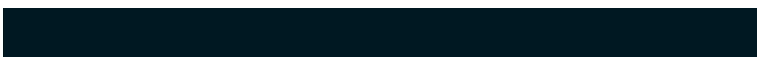
9542849



5725793



30113



6177

Previews

White Background



This preview shows how the Decimal color 12689041 looks on a white background.

Color Contrast Check

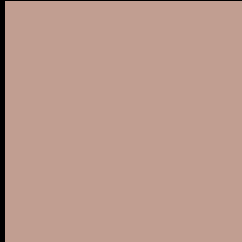
Large Text (above 18pt) WCAG AA × Fail

Any Text WCAG AA × Fail

Large Text (above 18pt) WCAG AAA × Fail

Any Text WCAG AAA × Fail

Black Background



This preview shows how the Decimal color 12689041 looks on a black background.

Color Contrast Check

Large Text (above 18pt) WCAG AA ✓ Pass

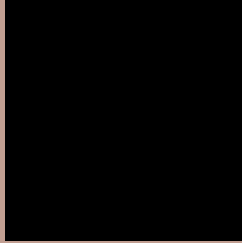
Any Text WCAG AA ✓ Pass

Large Text (above 18pt) WCAG AAA ✓ Pass

Any Text WCAG AAA ✓ Pass

If you want to check with other color combinations, try the [Color Contrast Checker](#).

Decimal 12689041 Background



This preview shows how black text looks on a background with the Decimal color 12689041.



This preview shows how white text looks on a background with the Decimal color 12689041.

Color Blindness Simulation

Color vision deficiency is a very complex topic, and I could not describe the different causes any better than Wikipedia does, so if you want to learn more, you should check out their [article about color blindness](#).


Dichromacy



Original Color
12689041

Protanopia
11380117

Deuteranopia
12427409



Tritanopia
12884903

Trichromacy



Original Color
12689041

Protanomaly
11838100

Deuteranomaly
12492689

Tritanomaly
12819615

Monochromacy



Original Color
12689041

Achromatopsia
10987431

Achromatomaly
11576479

CSS Examples

Text

The CSS property to change the color of the text to Decimal 12689041 is called "color". The color property can be set on classes, ids or directly on the HTML element.

This example shows how text in the color #C19E91 looks like.

```
.text, #text, p{  
    color:#C19E91  
}
```

If you want to add a text shadow in that color use the text-shadow property, you can generate a text shadow directly with our [CSS Text Shadow Generator](#).

Here you see how black text with a 4 pixel #C19E91 colored shadow looks like.

```
.shadow{ text-shadow: 4px 4px 2px #C19E91
}
```

Border

The CSS property to change the border of an element to Decimal 12689041 is called "border". The border property can be set on classes, ids or directly on the HTML element.

This example shows the color as border, it can be applied via the CSS property "border" or "border-color".

```
.border, #border, table{ border:4px solid
#C19E91 }
```

If only the border color should be changed use the property `border-color`.

```
.border{ border-color:#C19E91 }
```

If you want to add a box shadow in that color use:

Here you see how a box with a 4 pixel #C19E91 colored shadow looks like.

```
.boxshadow{ -moz-box-shadow:4px 4px 4px  
4px #C19E91; -webkit-box-shadow:4px 4px  
4px 4px #C19E91; box-shadow:4px 4px 4px  
4px #C19E91 }
```

Background

The CSS property to change the background color of an element to Decimal 12689041 is called "background". The background property can be set on classes, ids or directly on the HTML element.

```
.background, #background, body{  
background:#C19E91 }
```

If only the background color should be changed can be used:

```
.background{ background-color:#C19E91 }
```

This example shows the color as background, it is applied via the CSS property "background".

To optimize and compress your CSS code, you can use our [online CSS compressor and optimizer](#) based on csstidy. If you want to create a linear or radial gradient as background or border, check our [CSS Gradient Generator](#).

Hey! You found this booklet interesting? Support Converting Colors with the new Membership Option!

The pro membership hides all ads, plus gives you double the colors in the color bucket, and more awesome pro features!

[Learn more, Memberships starting at \\$2.50/m!](#)

**Follow me
on Twitter!**

@ConvertingColor