

# Converting Colors

Decimal(12690084)

Have a look what the booklet for  
Decimal(12690084) contains.

<b>Decimal(12690084)</b> .....	3
<i><b>Conversions</b></i> .....	4
<i><b>Details</b></i> .....	6
<i><b>Harmonies</b></i> .....	11
<i><b>Previews</b></i> .....	23
<i><b>Color Blindness Simulation</b></i> .....	26
<i><b>CSS Examples</b></i> .....	29

# **Color**

**Decimal(12690084)**

# Conversions

## Conversions Part 1

Format	Color
Hex	C1A2A4
RGB	193, 162, 164
RGB Percent	76%, 64%, 64%
CMY	0.2431, 0.3647, 0.3569
CMYK	0.00, 0.16, 0.15, 0.24
HSL	356°, 20%, 70%
HSV	356°, 16%, 76%
XYZ	41.6135, 39.8585, 40.6221
YIQ	171.4970, 17.8340, 7.1940

# Conversions

## Conversions Part 2

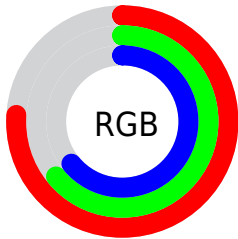
Format	Color
<a href="#">RYB</a>	<a href="#">193, 162, 164</a>
Decimal	<a href="#">12690084</a>
CIELab	<a href="#">69.37, 11.70, 3.21</a>
CIElCh	<a href="#">69, 12.130, 15.339</a>
Yxy	<a href="#">39.8585, 0.3408, 0.3265</a>
Android (android.graphics.Color)	<a href="#">4290880164</a> ( <a href="#">0xFFC1A2A4</a> )
YUV	<a href="#">171.4970, -3.6960, 18.8581</a>
Hunter-Lab	<a href="#">63.1336, 7.1718, 6.0444</a>

# Details

The Decimal color **12690084** is a light color, and the websafe version is hex **CC9999**. A complement of this color would be **10666431**, and the grayscale version is **11316396**.

A 20% lighter version of the original color is **16439771**, and **9137776** is the 20% darker color. If you saturate the color by 10%, you get **12685202**, and if you desaturate by 10%, it is **12694966**.

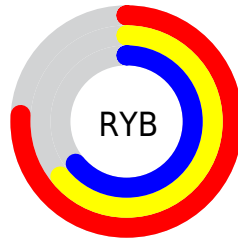
# Distribution



Red (76%)

Green (64%)

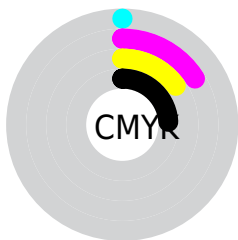
Blue (64%)



Red (76%)

Yellow (64%)

Blue (64%)

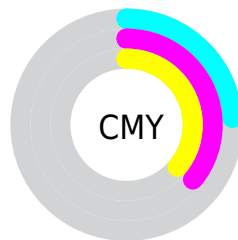


Cyan (0%)

Magenta (16%)

Yellow (15%)

Black (24%)



Cyan (24%)

Magenta (36%)

Yellow (36%)

# Brightness & Saturation Gradients

These gradients show how the Decimal color 12690084 changes by changing the brightness by 10 percent. The first figure shows a shift by +10% for each color and the second figure -10%.

Similar to the brightness gradients but the following saturation gradients show a change of the Decimal color 12690084 by changing the saturation by 10% instead.



 12690084

 12690084

16777215

 10913930

 16439771

 9137776

 16774647

 7427672

 5848897

 4270123

 2757654

 1310720

 0

 12690084

 12690084

 12685202

 12694966

 12680064

 12700104

 12675182

 12704986

 12670300

 12709868

 12665418

 12713982

 12660280

 12713983

 12655398

 12650516

 12648460

# Harmonies

## Analogous

The Analogous color harmony consists of three colors that are next to each other on the color wheel.



12427951



12690084



12559514

# Triad

The Triadic color harmony groups three colors that are evenly spaced from another and form a triangle on the color wheel.



12690084



10530458



10005694

# Complementary

The Complementary color scheme is a pair of colors which are on the opposite of each other on the color wheel.



12690084



10666431

# Split Complementary

Split-complementary colors differ from the complementary color scheme. The scheme consists of three colors, the original color and two neighbors of the complement color.



9416633



12690084



9744547

# Square

The Square scheme is like the rectangle color scheme, but the four colors are evenly spaced on the color wheel.



12690084



11315860



9351343



10856638

# Rectangle

The Rectangle color scheme consists of four colors that form a rectangle on the color wheel.



12690084



12297878



9351343



9743805

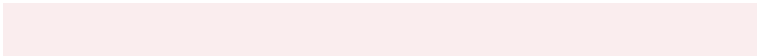


# Sweetspot

The Sweet Spot groups the original color and five complimentary colors.



12690084



16444910



12559041



8222070



16579836



8224125



# Same Dimension

The Same Dimension uses a secret algorithm to generate beautiful new colors.



12690084



16435917



12693410



6379352



10551306



2162690



# Inverse Universe

The Inverse Universe completely reimagines the original color for something new.



12690084



16435917



10663105



6379352



10551306

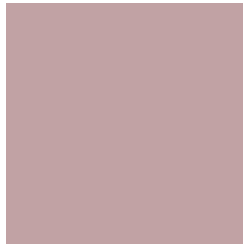


2162690



# Previews

## White Background



This preview shows how the Decimal color 12690084 looks on a white background.

## Color Contrast Check

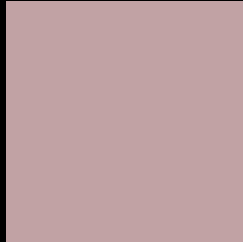
Large Text (above 18pt) WCAG AA × Fail

Any Text WCAG AA × Fail

Large Text (above 18pt) WCAG AAA × Fail

Any Text WCAG AAA × Fail

# Black Background



This preview shows how the Decimal color 12690084 looks on a black background.

## Color Contrast Check

Large Text (above 18pt) WCAG AA ✓ Pass

Any Text WCAG AA ✓ Pass

Large Text (above 18pt) WCAG AAA ✓ Pass

Any Text WCAG AAA ✓ Pass

If you want to check with other color combinations, try the [Color Contrast Checker](#).



## Decimal 12690084 Background



This preview shows how black text looks on a background with the Decimal color 12690084.



This preview shows how white text looks on a background with the Decimal color 12690084.

# Color Blindness Simulation

Color vision deficiency is a very complex topic, and I could not describe the different causes any better than Wikipedia does, so if you want to learn more, you should check out their [article about color blindness](#).

## Dichromacy



**Original Color**  
12690084

**Protanopia**  
11381160

**Deuteranopia**  
12362916



**Tritanopia**  
12755373

# Trichromacy



**Original Color**  
12690084

**Protanomaly**  
11839143

**Deuteranomaly**  
12493732

**Tritanomaly**  
12755370

# Monochromacy



**Original Color**  
12690084

**Achromatopsia**  
11250603

**Achromatomaly**  
11774120

# CSS Examples

## Text

The CSS property to change the color of the text to Decimal 12690084 is called "color". The color property can be set on classes, ids or directly on the HTML element.

This example shows how text in the color #C1A2A4 looks like.

```
.text, #text, p{  
    color:#C1A2A4  
}
```

If you want to add a text shadow in that color use the text-shadow property, you can generate a text shadow directly with our [CSS Text Shadow Generator](#).

Here you see how black text with a 4 pixel #C1A2A4 colored shadow looks like.

```
.shadow{ text-shadow: 4px 4px 2px #C1A2A4
}
```

## Border

The CSS property to change the border of an element to Decimal 12690084 is called "border". The border property can be set on classes, ids or directly on the HTML element.

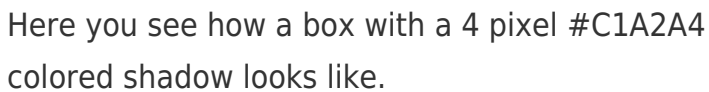
This example shows the color as border, it can be applied via the CSS property "border" or "border-color".

```
.border, #border, table{ border:4px solid
#C1A2A4 }
```

If only the border color should be changed use the property `border-color`.

```
.border{ border-color:#C1A2A4 }
```

If you want to add a box shadow in that color use:



Here you see how a box with a 4 pixel #C1A2A4 colored shadow looks like.

```
.boxshadow{ -moz-box-shadow:4px 4px 4px  
4px #C1A2A4; -webkit-box-shadow:4px 4px  
4px 4px #C1A2A4; box-shadow:4px 4px 4px  
4px #C1A2A4 }
```

# Background

The CSS property to change the background color of an element to Decimal 12690084 is called "background". The background property can be set on classes, ids or directly on the HTML element.

```
.background, #background, body{  
background:#C1A2A4 }
```

If only the background color should be changed can be used:

```
.background{ background-color:#C1A2A4 }
```

This example shows the color as background, it is applied via the CSS property "background".

To optimize and compress your CSS code, you can use our [online CSS compressor and optimizer](#) based on csstidy. If you want to create a linear or radial gradient as background or border, check our [CSS Gradient Generator](#).



Hey! You found this booklet interesting? Support Converting Colors with the new Membership Option!

The pro membership hides all ads, plus gives you double the colors in the color bucket, and more awesome pro features!

**[Learn more, Memberships starting at \\$2.50/m!](#)**

**Follow me  
on Twitter!**

@ConvertingColor