

Converting Colors

Decimal(12690852)

Have a look what the booklet for
Decimal(12690852) contains.

Decimal(12690852)	3
<i>Conversions</i>	4
<i>Details</i>	6
<i>Harmonies</i>	11
<i>Previews</i>	23
<i>Color Blindness Simulation</i>	26
<i>CSS Examples</i>	29

Color

Decimal(12690852)

Conversions

Conversions Part 1

Format	Color
Hex	C1A5A4
RGB	193, 165, 164
RGB Percent	76%, 65%, 64%
CMY	0.2431, 0.3529, 0.3569
CMYK	0.00, 0.15, 0.15, 0.24
HSL	2°, 19%, 70%
HSV	2°, 15%, 76%
XYZ	42.1483, 40.9281, 40.8004
YIQ	173.2580, 17.0090, 5.6250

Conversions

Conversions Part 2

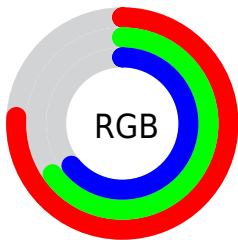
Format	Color
R_{YB}	193, 165, 164
Decimal	12690852
CIE _{Lab}	70.13, 10.06, 4.30
CIE _{LCh}	70, 10.937, 23.170
Yxy	40.9281, 0.3402, 0.3304
Android (android.graphics.Color)	4290880932 (0xFFC1A5A4)
YUV	173.2580, -4.5642, 17.3137
Hunter-Lab	63.9750, 5.6438, 6.9700

Details

The Decimal color **12690852** is a light color, and the websafe version is hex **CC9999**. A complement of this color would be **10797249**, and the grayscale version is **11382189**.

A 20% lighter version of the original color is **16440539**, and **9138544** is the 20% darker color. If you saturate the color by 10%, you get **12685969**, and if you desaturate by 10%, it is **12695735**.

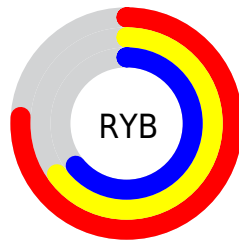
Distribution



Red (76%)

Green (65%)

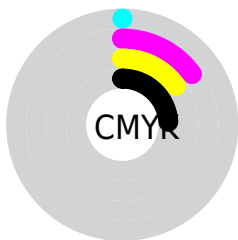
Blue (64%)



Red (76%)

Yellow (65%)

Blue (64%)

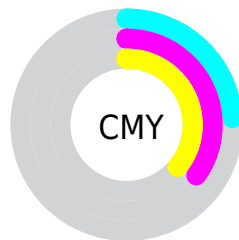


Cyan (0%)

Magenta (15%)

Yellow (15%)

Black (24%)



Cyan (24%)

Magenta (35%)

Yellow (36%)

Brightness & Saturation Gradients

These gradients show how the Decimal color 12690852 changes by changing the brightness by 10 percent. The first figure shows a shift by +10% for each color and the second figure -10%.

Similar to the brightness gradients but the following saturation gradients show a change of the Decimal color 12690852 by changing the saturation by 10% instead.

 12690852

 12690852

16777215

 10914698

 16440539

 9138544

 16775671

 7428440

 5849409

 4270891

 2758166

 1441792

 0

 12690852

 12690852

 12685969

 12695735

 12681341

 12700363

 12676458

 12705246

 12671575

 12710129

 12666948

 12713983

 12662064

 12657437

 12652554

 12650240

Harmonies

Analogous

The Analogous color harmony consists of three colors that are next to each other on the color wheel.



12494254



12690852



12494748

Triad

The Triadic color harmony groups three colors that are evenly spaced from another and form a triangle on the color wheel.



12690852



10530975



10399167

Complementary

The Complementary color scheme is a pair of colors which are on the opposite of each other on the color wheel.



12690852



10797249

Split Complementary

Split-complementary colors differ from the complementary color scheme. The scheme consists of three colors, the original color and two neighbors of the complement color.



9810107



12690852



9941417

Square

The Square scheme is like the rectangle color scheme, but the four colors are evenly spaced on the color wheel.



12690852



11251097



9679283



11250366

Rectangle

The Rectangle color scheme consists of four colors that form a rectangle on the color wheel.



12690852



12167577



9679283



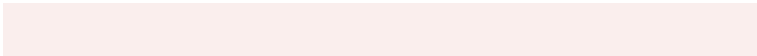
10202814

Sweetspot

The Sweet Spot groups the original color and five complimentary colors.



12690852



16445165



12690624



8222325



16579836



8224125

Same Dimension

The Same Dimension uses a secret algorithm to generate beautiful new colors.



12690852



16436941



12694436



6379607



10552832



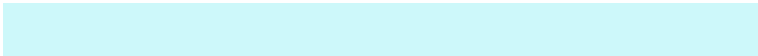
2162944

Inverse Universe

The Inverse Universe completely reimagines the original color for something new.



10797249



13498618



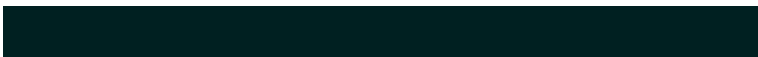
10793665



5726561



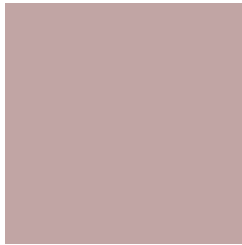
39841



8225

Previews

White Background



This preview shows how the Decimal color 12690852 looks on a white background.

Color Contrast Check

Large Text (above 18pt) WCAG AA × Fail

Any Text WCAG AA × Fail

Large Text (above 18pt) WCAG AAA × Fail

Any Text WCAG AAA × Fail

Black Background



This preview shows how the Decimal color 12690852 looks on a black background.

Color Contrast Check

Large Text (above 18pt) WCAG AA ✓ Pass

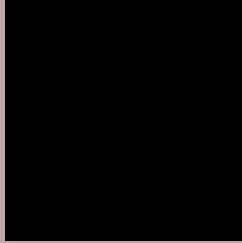
Any Text WCAG AA ✓ Pass

Large Text (above 18pt) WCAG AAA ✓ Pass

Any Text WCAG AAA ✓ Pass

If you want to check with other color combinations, try the [Color Contrast Checker](#).

Decimal 12690852 Background



This preview shows how black text looks on a background with the Decimal color 12690852.



This preview shows how white text looks on a background with the Decimal color 12690852.

Color Blindness Simulation

Color vision deficiency is a very complex topic, and I could not describe the different causes any better than Wikipedia does, so if you want to learn more, you should check out their [article about color blindness](#).

Dichromacy





Tritanopia
12821424

Trichromacy



Original Color
12690852

Protanomaly
11970982

Deuteranomaly
12625572

Tritanomaly
12756140

Monochromacy



Original Color
12690852

Achromatopsia
11382189

Achromatomaly
11840170

CSS Examples

Text

The CSS property to change the color of the text to Decimal 12690852 is called "color". The color property can be set on classes, ids or directly on the HTML element.

This example shows how text in the color #C1A5A4 looks like.

```
.text, #text, p{  
    color:#C1A5A4  
}
```

If you want to add a text shadow in that color use the text-shadow property, you can generate a text shadow directly with our [CSS Text Shadow Generator](#).

Here you see how black text with a 4 pixel #C1A5A4 colored shadow looks like.

```
.shadow{ text-shadow: 4px 4px 2px #C1A5A4
}
```

Border

The CSS property to change the border of an element to Decimal 12690852 is called "border". The border property can be set on classes, ids or directly on the HTML element.

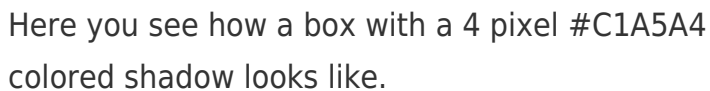
This example shows the color as border, it can be applied via the CSS property "border" or "border-color".

```
.border, #border, table{ border:4px solid
#C1A5A4 }
```

If only the border color should be changed use the property `border-color`.

```
.border{ border-color:#C1A5A4 }
```

If you want to add a box shadow in that color use:



Here you see how a box with a 4 pixel #C1A5A4 colored shadow looks like.

```
.boxshadow{ -moz-box-shadow:4px 4px 4px  
4px #C1A5A4; -webkit-box-shadow:4px 4px  
4px 4px #C1A5A4; box-shadow:4px 4px 4px  
4px #C1A5A4 }
```

Background

The CSS property to change the background color of an element to Decimal 12690852 is called "background". The background property can be set on classes, ids or directly on the HTML element.

```
.background, #background, body{  
background:#C1A5A4 }
```

If only the background color should be changed can be used:

```
.background{ background-color:#C1A5A4 }
```

This example shows the color as background, it is applied via the CSS property "background".

To optimize and compress your CSS code, you can use our [online CSS compressor and optimizer](#) based on csstidy. If you want to create a linear or radial gradient as background or border, check our [CSS Gradient Generator](#).

Hey! You found this booklet interesting? Support Converting Colors with the new Membership Option!

The pro membership hides all ads, plus gives you double the colors in the color bucket, and more awesome pro features!

[Learn more, Memberships starting at \\$2.50/m!](#)

**Follow me
on Twitter!**

@ConvertingColor