

Converting Colors

Decimal(12692627)

Have a look what the booklet for
Decimal(12692627) contains.

Decimal(12692627)	3
<i>Conversions</i>	4
<i>Details</i>	6
<i>Harmonies</i>	11
<i>Previews</i>	23
<i>Color Blindness Simulation</i>	26
<i>CSS Examples</i>	29

Color

Decimal(12692627)

Conversions

Conversions Part 1

Format	Color
Hex	C1AC93
RGB	193, 172, 147
RGB Percent	76%, 67%, 58%
CMY	0.2431, 0.3255, 0.4235
CMYK	0.00, 0.11, 0.24, 0.24
HSL	33°, 27%, 67%
HSV	33°, 24%, 76%
XYZ	42.0113, 42.9491, 33.6795
YIQ	175.4290, 20.5410, -3.3230

Conversions

Conversions Part 2

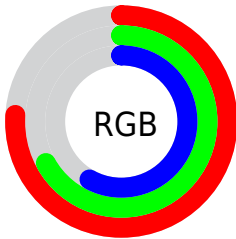
Format	Color
R _Y B	186, 193, 147
Decimal	12692627
CIE Lab	71.52, 3.63, 15.64
CIE LCh	72, 16.054, 76.935
Yxy	42.9491, 0.3541, 0.3620
Android (android.graphics.Color)	4290882707 (0xFFC1AC93)
YUV	175.4290, -14.0155, 15.4098
Hunter-Lab	65.5356, -0.2605, 15.4050

Details

The Decimal color **12692627** is a light color, and the websafe version is hex **CC9999**. A complement of this color would be **9676993**, and the grayscale version is **11579568**.

A 20% lighter version of the original color is **16442313**, and **9140320** is the 20% darker color. If you saturate the color by 10%, you get **12690304**, and if you desaturate by 10%, it is **12694950**.

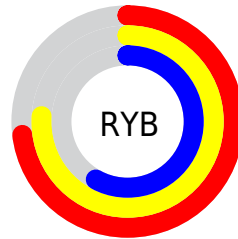
Distribution



Red (76%)

Green (67%)

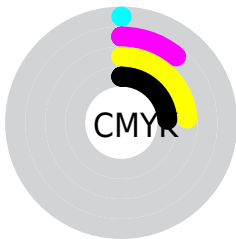
Blue (58%)



Red (73%)

Yellow (76%)

Blue (58%)

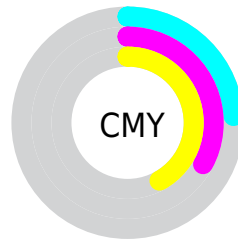


Cyan (0%)

Magenta (11%)

Yellow (24%)

Black (24%)



Cyan (24%)

Magenta (33%)

Yellow (42%)

Brightness & Saturation Gradients

These gradients show how the Decimal color 12692627 changes by changing the brightness by 10 percent. The first figure shows a shift by +10% for each color and the second figure -10%.

Similar to the brightness gradients but the following saturation gradients show a change of the Decimal color 12692627 by changing the saturation by 10% instead.

 12692627

 12692627

16777215

 10916217

 16442313

 9140320


 16777189

 7429961

 5785394

 4206877

 2759684

 1114624

 0

 12692627

 12692627

 12690304

 12694950

 12687980

 12697274

 12685913

 12699341

 12683590

 12701664

 12681267

 12703988

 12678943

 12706303

 12676620

 12708607

 12675328

 12710655

 12712959

Harmonies

Analogous

The Analogous color harmony consists of three colors that are next to each other on the color wheel.



13346970



12692627



11710867

Triad

The Triadic color harmony groups three colors that are evenly spaced from another and form a triangle on the color wheel.



12692627



9025719



12364227

Complementary

The Complementary color scheme is a pair of colors which are on the opposite of each other on the color wheel.



12692627



9676993

Split Complementary

Split-complementary colors differ from the complementary color scheme. The scheme consists of three colors, the original color and two neighbors of the complement color.



11185867



12692627



9156292

Square

The Square scheme is like the rectangle color scheme, but the four colors are evenly spaced on the color wheel.



12692627



9615272



9941707



13215414

Rectangle

The Rectangle color scheme consists of four colors that form a rectangle on the color wheel.



12692627



10990744



9941707



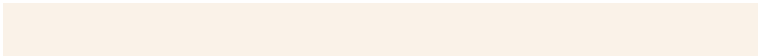
11971271

Sweetspot

The Sweet Spot groups the original color and five complimentary colors.



12692627



16446184



12686248



8222835



16579836



8224125

Same Dimension

The Same Dimension uses a secret algorithm to generate beautiful new colors.



12692627



16439729



12566931



6380631



10573568



2167296

Inverse Universe

The Inverse Universe completely reimagines the original color for something new.



9676993



11654138



9802689



5725281



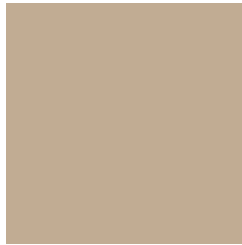
18849



3873

Previews

White Background



This preview shows how the Decimal color 12692627 looks on a white background.

Color Contrast Check

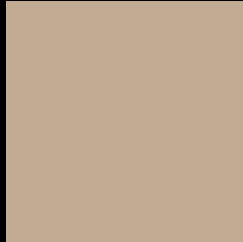
Large Text (above 18pt) WCAG AA × Fail

Any Text WCAG AA × Fail

Large Text (above 18pt) WCAG AAA × Fail

Any Text WCAG AAA × Fail

Black Background



This preview shows how the Decimal color 12692627 looks on a black background.

Color Contrast Check

Large Text (above 18pt) WCAG AA ✓ Pass

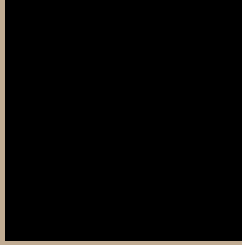
Any Text WCAG AA ✓ Pass

Large Text (above 18pt) WCAG AAA ✓ Pass

Any Text WCAG AAA ✓ Pass

If you want to check with other color combinations, try the [Color Contrast Checker](#).

Decimal 12692627 Background



This preview shows how black text looks on a background with the Decimal color 12692627.




This preview shows how white text looks on a background with the Decimal color 12692627.

Color Blindness Simulation

Color vision deficiency is a very complex topic, and I could not describe the different causes any better than Wikipedia does, so if you want to learn more, you should check out their [article about color blindness](#).

Dichromacy





Tritanopia
12953524

Trichromacy



Original Color
12692627

Protanomaly
12365460

Deuteranomaly
13085332

Tritanomaly
12888488

Monochromacy



Original Color
12692627

Achromatopsia
11513775

Achromatomaly
11972261

CSS Examples

Text

The CSS property to change the color of the text to Decimal 12692627 is called "color". The color property can be set on classes, ids or directly on the HTML element.

This example shows how text in the color #C1AC93 looks like.

```
.text, #text, p{  
    color:#C1AC93  
}
```

If you want to add a text shadow in that color use the text-shadow property, you can generate a text shadow directly with our [CSS Text Shadow Generator](#).

Here you see how black text with a 4 pixel #C1AC93 colored shadow looks like.

```
.shadow{ text-shadow: 4px 4px 2px #C1AC93
}
```

Border

The CSS property to change the border of an element to Decimal 12692627 is called "border". The border property can be set on classes, ids or directly on the HTML element.

This example shows the color as border, it can be applied via the CSS property "border" or "border-color".

```
.border, #border, table{ border:4px solid
#C1AC93 }
```

If only the border color should be changed use the property `border-color`.

```
.border{ border-color:#C1AC93 }
```

If you want to add a box shadow in that color use:

Here you see how a box with a 4 pixel #C1AC93 colored shadow looks like.

```
.boxshadow{ -moz-box-shadow:4px 4px 4px  
4px #C1AC93; -webkit-box-shadow:4px 4px  
4px 4px #C1AC93; box-shadow:4px 4px 4px  
4px #C1AC93 }
```

Background

The CSS property to change the background color of an element to Decimal 12692627 is called "background". The background property can be set on classes, ids or directly on the HTML element.

```
.background, #background, body{  
background:#C1AC93 }
```

If only the background color should be changed can be used:

```
.background{ background-color:#C1AC93 }
```

This example shows the color as background, it is applied via the CSS property "background".

To optimize and compress your CSS code, you can use our [online CSS compressor and optimizer](#) based on csstidy. If you want to create a linear or radial gradient as background or border, check our [CSS Gradient Generator](#).

Hey! You found this booklet interesting? Support Converting Colors with the new Membership Option!

The pro membership hides all ads, plus gives you double the colors in the color bucket, and more awesome pro features!

[Learn more, Memberships starting at \\$2.50/m!](#)

**Follow me
on Twitter!**

@ConvertingColor