

Converting Colors

Decimal(12692630)

Have a look what the booklet for
Decimal(12692630) contains.

Decimal(12692630)	3
<i>Conversions</i>	4
<i>Details</i>	6
<i>Harmonies</i>	11
<i>Previews</i>	23
<i>Color Blindness Simulation</i>	26
<i>CSS Examples</i>	29

Color

Decimal(12692630)

Conversions

Conversions Part 1

Format	Color
Hex	C1AC96
RGB	193, 172, 150
RGB Percent	76%, 67%, 59%
CMY	0.2431, 0.3255, 0.4118
CMYK	0.00, 0.11, 0.22, 0.24
HSL	31°, 26%, 67%
HSV	31°, 22%, 76%
XYZ	42.2499, 43.0445, 34.9358
YIQ	175.7710, 19.5780, -2.3900

Conversions

Conversions Part 2

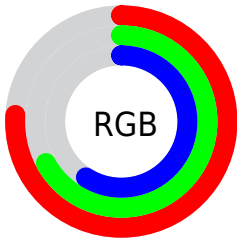
Format	Color
RYB	191, 193, 150
Decimal	12692630
CIELab	71.59, 4.07, 14.09
CIElCh	72, 14.665, 73.889
Yxy	43.0445, 0.3514, 0.3580
Android (android.graphics.Color)	4290882710 (0xFFC1AC96)
YUV	175.7710, -12.7051, 15.1098
Hunter-Lab	65.6083, 0.1343, 14.3545

Details

The Decimal color **12692630** is a light color, and the websafe version is hex **CC9999**. A complement of this color would be **9874369**, and the grayscale version is **11579568**.

A 20% lighter version of the original color is **16442316**, and **9140323** is the 20% darker color. If you saturate the color by 10%, you get **12690307**, and if you desaturate by 10%, it is **12694953**.

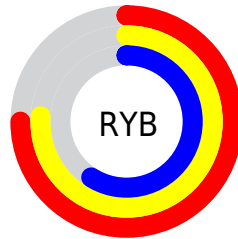
Distribution



Red (76%)

Green (67%)

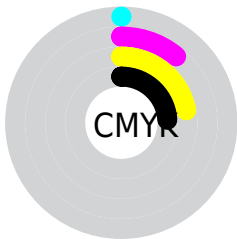
Blue (59%)



Red (75%)

Yellow (76%)

Blue (59%)

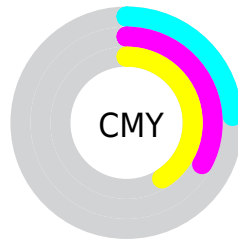


Cyan (0%)

Magenta (11%)

Yellow (22%)

Black (24%)



Cyan (24%)

Magenta (33%)

Yellow (41%)

Brightness & Saturation Gradients

These gradients show how the Decimal color 12692630 changes by changing the brightness by 10 percent. The first figure shows a shift by +10% for each color and the second figure -10%.

Similar to the brightness gradients but the following saturation gradients show a change of the Decimal color 12692630 by changing the saturation by 10% instead.

 12692630

 12692630

16777215

 10916220

 16442316

 9140323

 16777192

 7429963

 5785396

 4206879

 2759688

 1180160

 0

 12692630

 12692630

12690307

12694953

12687727

12697533

12685404

12699856

12682825

12702435

12680502

12704759

12677922

12707327

12675599

12709631

12673792

12711935

12713983

Harmonies

Analogous

The Analogous color harmony consists of three colors that are next to each other on the color wheel.



13281437



12692630



11841685

Triad

The Triadic color harmony groups three colors that are evenly spaced from another and form a triangle on the color wheel.



12692630



9353141



12167875

Complementary

The Complementary color scheme is a pair of colors which are on the opposite of each other on the color wheel.



12692630



9874369

Split Complementary

Split-complementary colors differ from the complementary color scheme. The scheme consists of three colors, the original color and two neighbors of the complement color.



11120329



12692630



9352897

Square

The Square scheme is like the rectangle color scheme, but the four colors are evenly spaced on the color wheel.



12692630



9877415



10073033



13019063

Rectangle

The Rectangle color scheme consists of four colors that form a rectangle on the color wheel.



12692630



11121561



10073033



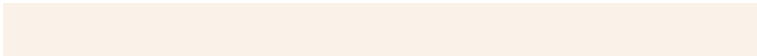
11840454

Sweetspot

The Sweet Spot groups the original color and five complimentary colors.



12692630



16445928



12687020



8222835



16579836



8224125

Same Dimension

The Same Dimension uses a secret algorithm to generate beautiful new colors.



12692630



16439734



12698006



6380631



10572288



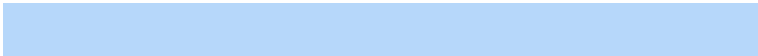
2167040

Inverse Universe

The Inverse Universe completely reimagines the original color for something new.



9874369



11982842



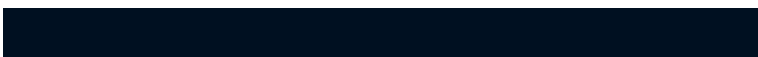
9868993



5725281



20129



4129

Previews

White Background



This preview shows how the Decimal color 12692630 looks on a white background.

Color Contrast Check

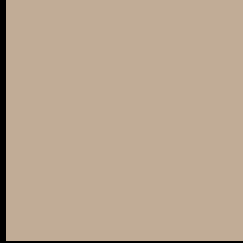
Large Text (above 18pt) WCAG AA × Fail

Any Text WCAG AA × Fail

Large Text (above 18pt) WCAG AAA × Fail

Any Text WCAG AAA × Fail

Black Background



This preview shows how the Decimal color 12692630 looks on a black background.

Color Contrast Check

Large Text (above 18pt) WCAG AA ✓ Pass

Any Text WCAG AA ✓ Pass

Large Text (above 18pt) WCAG AAA ✓ Pass

Any Text WCAG AAA ✓ Pass

If you want to check with other color combinations, try the [Color Contrast Checker](#).

Decimal 12692630 Background



This preview shows how black text looks on a background with the Decimal color 12692630.



This preview shows how white text looks on a background with the Decimal color 12692630.

Color Blindness Simulation

Color vision deficiency is a very complex topic, and I could not describe the different causes any better than Wikipedia does, so if you want to learn more, you should check out their [article about color blindness](#).


Dichromacy



Original Color
12692630

Protanopia
12103575

Deuteranopia
13216151



Tritanopia
12953781

Trichromacy



Original Color
12692630

Protanomaly
12299927

Deuteranomaly
13019799

Tritanomaly
12888490

Monochromacy



Original Color
12692630

Achromatopsia
11579568

Achromatomaly
11972519

CSS Examples

Text

The CSS property to change the color of the text to Decimal 12692630 is called "color". The color property can be set on classes, ids or directly on the HTML element.

This example shows how text in the color #C1AC96 looks like.

```
.text, #text, p{  
    color:#C1AC96  
}
```

If you want to add a text shadow in that color use the text-shadow property, you can generate a text shadow directly with our [CSS Text Shadow Generator](#).

Here you see how black text with a 4 pixel #C1AC96 colored shadow looks like.

```
.shadow{ text-shadow: 4px 4px 2px #C1AC96
}
```

Border

The CSS property to change the border of an element to Decimal 12692630 is called "border". The border property can be set on classes, ids or directly on the HTML element.

This example shows the color as border, it can be applied via the CSS property "border" or "border-color".

```
.border, #border, table{ border:4px solid
#C1AC96 }
```

If only the border color should be changed use the property `border-color`.

```
.border{ border-color:#C1AC96 }
```

If you want to add a box shadow in that color use:

Here you see how a box with a 4 pixel #C1AC96 colored shadow looks like.

```
.boxshadow{ -moz-box-shadow:4px 4px 4px  
4px #C1AC96; -webkit-box-shadow:4px 4px  
4px 4px #C1AC96; box-shadow:4px 4px 4px  
4px #C1AC96 }
```

Background

The CSS property to change the background color of an element to Decimal 12692630 is called "background". The background property can be set on classes, ids or directly on the HTML element.

```
.background, #background, body{  
background:#C1AC96 }
```

If only the background color should be changed can be used:

```
.background{ background-color:#C1AC96 }
```

This example shows the color as background, it is applied via the CSS property "background".

To optimize and compress your CSS code, you can use our [online CSS compressor and optimizer](#) based on csstidy. If you want to create a linear or radial gradient as background or border, check our [CSS Gradient Generator](#).

Hey! You found this booklet interesting? Support Converting Colors with the new Membership Option!

The pro membership hides all ads, plus gives you double the colors in the color bucket, and more awesome pro features!

[Learn more, Memberships starting at \\$2.50/m!](#)

**Follow me
on Twitter!**

@ConvertingColor