

# Converting Colors

Decimal(12693161)

Have a look what the booklet for  
Decimal(12693161) contains.

<b>Decimal(12693161)</b> .....	3
<i><b>Conversions</b></i> .....	4
<i><b>Details</b></i> .....	6
<i><b>Harmonies</b></i> .....	11
<i><b>Previews</b></i> .....	23
<i><b>Color Blindness Simulation</b></i> .....	26
<i><b>CSS Examples</b></i> .....	29

# **Color**

**Decimal(12693161)**

# Conversions

## Conversions Part 1

Format	Color
Hex	C1AEA9
RGB	193, 174, 169
RGB Percent	76%, 68%, 66%
CMY	0.2431, 0.3176, 0.3373
CMYK	0.00, 0.10, 0.12, 0.24
HSL	13°, 16%, 71%
HSV	13°, 12%, 76%
XYZ	44.2898, 44.4741, 43.7862
YIQ	179.1110, 12.9290, 2.4730

# Conversions

## Conversions Part 2

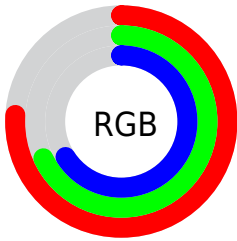
<b>Format</b>	<b>Color</b>
<b>RYB</b>	193, 175, 169
Decimal	12693161
CIELab	72.54, 5.98, 5.04
CIELCh	73, 7.820, 40.116
Yxy	44.4741, 0.3341, 0.3355
Android (android.graphics.Color)	4290883241 (0xFFC1AEA9)
YUV	179.1110, -4.9847, 12.1807
Hunter-Lab	66.6889, 1.8407, 7.7540

# Details

The Decimal color **12693161** is a light color, and the websafe version is hex **999999**. A complement of this color would be **11123905**, and the grayscale version is **11776947**.

A 20% lighter version of the original color is **16442848**, and **9140853** is the 20% darker color. If you saturate the color by 10%, you get **12689302**, and if you desaturate by 10%, it is **12697020**.

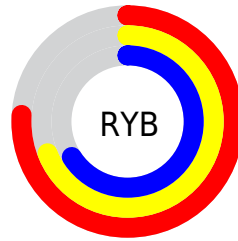
# Distribution



Red (76%)

Green (68%)

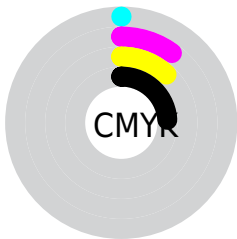
Blue (66%)



Red (76%)

Yellow (69%)

Blue (66%)

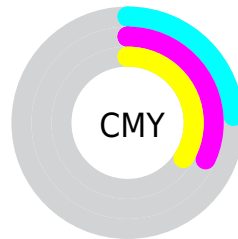


Cyan (0%)

Magenta (10%)

Yellow (12%)

Black (24%)



Cyan (24%)

Magenta (32%)

Yellow (34%)

# Brightness & Saturation Gradients

These gradients show how the Decimal color 12693161 changes by changing the brightness by 10 percent. The first figure shows a shift by +10% for each color and the second figure -10%.

Similar to the brightness gradients but the following saturation gradients show a change of the Decimal color 12693161 by changing the saturation by 10% instead.



 12693161

 12693161

16777215

 10916751

 16442848

 9140853

16777213

 7496028

 5851461

 4272943

 2825498

 1573888

 0

 12693161

 12693161

 12689302

 12697020

 12685186

 12701136

 12681327

 12704995

 12677468

 12708854

 12673609

 12712703

 12669493

 12713983

 12665634

 12661775

 12658688

# Harmonies

## Analogous

The Analogous color harmony consists of three colors that are next to each other on the color wheel.



12692912



12693161



12431525

# Triad

The Triadic color harmony groups three colors that are evenly spaced from another and form a triangle on the color wheel.



12693161



10925741



11449024

# Complementary

The Complementary color scheme is a pair of colors which are on the opposite of each other on the color wheel.



12693161



11123905

# Split Complementary

Split-complementary colors differ from the complementary color scheme. The scheme consists of three colors, the original color and two neighbors of the complement color.



10925247



12693161



10598068

# Square

The Square scheme is like the rectangle color scheme, but the four colors are evenly spaced on the color wheel.



12693161



11383975



10598075



11972541

# Rectangle

The Rectangle color scheme consists of four colors that form a rectangle on the color wheel.



12693161



12104100



10598075



11252416

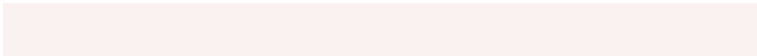


# Sweetspot

The Sweet Spot groups the original color and five complimentary colors.



12693161



16446192



12691900



8222839



16579836



8224125

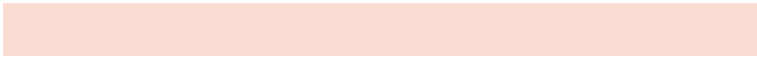


# Same Dimension

The Same Dimension uses a secret algorithm to generate beautiful new colors.



12693161



16440532



12696233



6379863



10559744



2164480

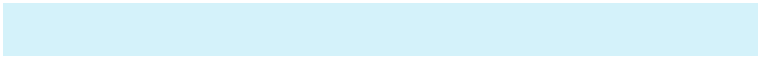


# Inverse Universe

The Inverse Universe completely reimagines the original color for something new.



11123905



13955834



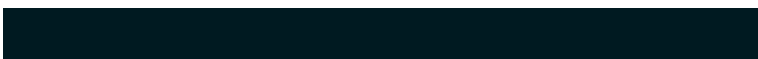
11120833



5726049



32673



6689



# Previews

## White Background



This preview shows how the Decimal color 12693161 looks on a white background.

## Color Contrast Check

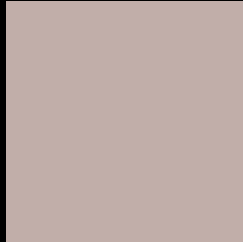
Large Text (above 18pt) WCAG AA × Fail

Any Text WCAG AA × Fail

Large Text (above 18pt) WCAG AAA × Fail

Any Text WCAG AAA × Fail

# Black Background



This preview shows how the Decimal color 12693161 looks on a black background.

## Color Contrast Check

Large Text (above 18pt) WCAG AA ✓ Pass

Any Text WCAG AA ✓ Pass

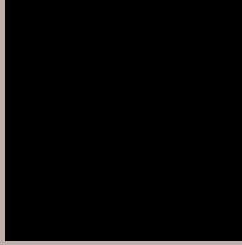
Large Text (above 18pt) WCAG AAA ✓ Pass

Any Text WCAG AAA ✓ Pass

If you want to check with other color combinations, try the [Color Contrast Checker](#).



## Decimal 12693161 Background



This preview shows how black text looks on a background with the Decimal color 12693161.



This preview shows how white text looks on a background with the Decimal color 12693161.

# Color Blindness Simulation

Color vision deficiency is a very complex topic, and I could not describe the different causes any better than Wikipedia does, so if you want to learn more, you should check out their [article about color blindness](#).

## Dichromacy



**Original Color**  
12693161

**Protanopia**  
12038571

**Deuteranopia**  
13020329



**Tritanopia**  
12823737

# Trichromacy



**Original Color**  
12693161

**Protanomaly**  
12300458

**Deuteranomaly**  
12889513

**Tritanomaly**  
12758451

# Monochromacy



**Original Color**  
12693161

**Achromatopsia**  
11776947

**Achromatomaly**  
12104111

# CSS Examples

## Text

The CSS property to change the color of the text to Decimal 12693161 is called "color". The color property can be set on classes, ids or directly on the HTML element.

This example shows how text in the color #C1AEA9 looks like.

```
.text, #text, p{  
    color:#C1AEA9  
}
```

If you want to add a text shadow in that color use the text-shadow property, you can generate a text shadow directly with our [CSS Text Shadow Generator](#).

Here you see how black text with a 4 pixel #C1AEA9 colored shadow looks like.

```
.shadow{ text-shadow: 4px 4px 2px #C1AEA9
}
```

## Border

The CSS property to change the border of an element to Decimal 12693161 is called "border". The border property can be set on classes, ids or directly on the HTML element.

This example shows the color as border, it can be applied via the CSS property "border" or "border-color".

```
.border, #border, table{ border:4px solid
#C1AEA9 }
```

If only the border color should be changed use the property `border-color`.

```
.border{ border-color:#C1AEA9 }
```

If you want to add a box shadow in that color use:

Here you see how a box with a 4 pixel #C1AEA9 colored shadow looks like.

```
.boxshadow{ -moz-box-shadow:4px 4px 4px  
4px #C1AEA9; -webkit-box-shadow:4px 4px  
4px 4px #C1AEA9; box-shadow:4px 4px 4px  
4px #C1AEA9 }
```

# Background

The CSS property to change the background color of an element to Decimal 12693161 is called "background". The background property can be set on classes, ids or directly on the HTML element.

```
.background, #background, body{  
background:#C1AEA9 }
```

If only the background color should be changed can be used:

```
.background{ background-color:#C1AEA9 }
```

This example shows the color as background, it is applied via the CSS property "background".

To optimize and compress your CSS code, you can use our [online CSS compressor and optimizer](#) based on csstidy. If you want to create a linear or radial gradient as background or border, check our [CSS Gradient Generator](#).



Hey! You found this booklet interesting? Support Converting Colors with the new Membership Option!

The pro membership hides all ads, plus gives you double the colors in the color bucket, and more awesome pro features!

**[Learn more, Memberships starting at \\$2.50/m!](#)**

**Follow me  
on Twitter!**

@ConvertingColor