

Converting Colors

Decimal(12693407)

Have a look what the booklet for
Decimal(12693407) contains.

Decimal(12693407)	3
<i>Conversions</i>	4
<i>Details</i>	6
<i>Harmonies</i>	11
<i>Previews</i>	23
<i>Color Blindness Simulation</i>	26
<i>CSS Examples</i>	29

Color

Decimal(12693407)

Conversions

Conversions Part 1

Format	Color
Hex	C1AF9F
RGB	193, 175, 159
RGB Percent	76%, 69%, 62%
CMY	0.2431, 0.3137, 0.3765
CMYK	0.00, 0.09, 0.18, 0.24
HSL	28°, 22%, 69%
HSV	28°, 18%, 76%
XYZ	43.5803, 44.5006, 39.0934
YIQ	178.5580, 15.8640, -1.1600

Conversions

Conversions Part 2

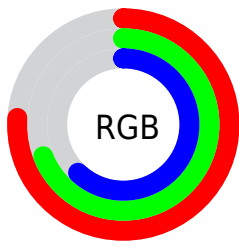
Format	Color
RYB	193, 189, 159
Decimal	12693407
CIELab	72.56, 3.82, 10.54
CIELCh	73, 11.216, 70.066
Yxy	44.5006, 0.3427, 0.3499
Android (android.graphics.Color)	4290883487 (0xFFC1AF9F)
YUV	178.5580, -9.6421, 12.6656
Hunter-Lab	66.7088, -0.1278, 11.9503

Details

The Decimal color **12693407** is a light color, and the websafe version is hex **999999**. A complement of this color would be **10465729**, and the grayscale version is **11776947**.

A 20% lighter version of the original color is **16443350**, and **9141100** is the 20% darker color. If you saturate the color by 10%, you get **12690828**, and if you desaturate by 10%, it is **12695986**.

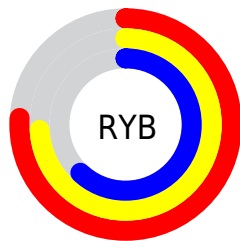
Distribution



Red (76%)

Green (69%)

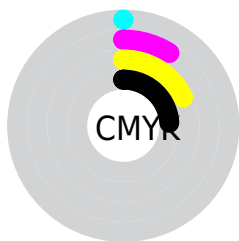
Blue (62%)



Red (76%)

Yellow (74%)

Blue (62%)

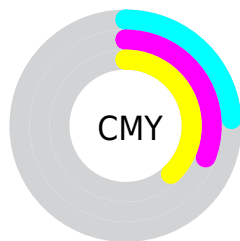


Cyan (0%)

Magenta (9%)

Yellow (18%)

Black (24%)



Cyan (24%)

Magenta (31%)

Yellow (38%)

Brightness & Saturation Gradients

These gradients show how the Decimal color 12693407 changes by changing the brightness by 10 percent. The first figure shows a shift by +10% for each color and the second figure -10%.

Similar to the brightness gradients but the following saturation gradients show a change of the Decimal color 12693407 by changing the saturation by 10% instead.

 12693407

 12693407

16777215

 10916997

 16443350

 9141100

 16777202

 7430739

 5851708

 4272934

 2760210

 1377792

 0

 12693407

 12693407

 12690828

 12695986

 12688248

 12698566

 12685413

 12701401

 12682834

 12703980

 12680255

 12706559

 12677675

 12709119

 12674840

 12711935

 12672261

 12713983

 12671744

Harmonies

Analogous

The Analogous color harmony consists of three colors that are next to each other on the color wheel.



13085861



12693407



12038814

Triad

The Triadic color harmony groups three colors that are evenly spaced from another and form a triangle on the color wheel.



12693407



10074293



12103362

Complementary

The Complementary color scheme is a pair of colors which are on the opposite of each other on the color wheel.



12693407



10465729

Split Complementary

Split-complementary colors differ from the complementary color scheme. The scheme consists of three colors, the original color and two neighbors of the complement color.



11317958



12693407



10074047

Square

The Square scheme is like the rectangle color scheme, but the four colors are evenly spaced on the color wheel.



12693407



10533035



10532293



12823737

Rectangle

The Rectangle color scheme consists of four colors that form a rectangle on the color wheel.



12693407



11515296



10532293



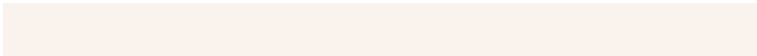
11841476

Sweetspot

The Sweet Spot groups the original color and five complimentary colors.



12693407



16446445



12689329



8223093



16579836



8224125

Same Dimension

The Same Dimension uses a secret algorithm to generate beautiful new colors.



12693407



16441029



12697759



6380631



10570752



2166784

Inverse Universe

The Inverse Universe completely reimagines the original color for something new.



10465729



12968442



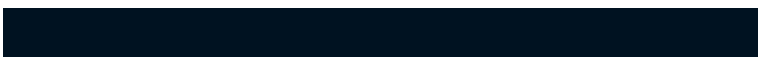
10461377



5725281



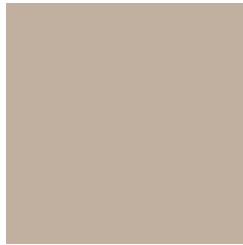
21921



4641

Previews

White Background



This preview shows how the Decimal color 12693407 looks on a white background.

Color Contrast Check

Large Text (above 18pt) WCAG AA × Fail

Any Text WCAG AA × Fail

Large Text (above 18pt) WCAG AAA × Fail

Any Text WCAG AAA × Fail

Black Background



This preview shows how the Decimal color 12693407 looks on a black background.

Color Contrast Check

Large Text (above 18pt) WCAG AA ✓ Pass

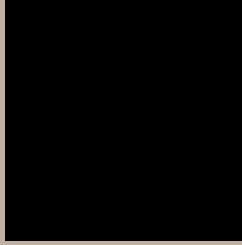
Any Text WCAG AA ✓ Pass

Large Text (above 18pt) WCAG AAA ✓ Pass

Any Text WCAG AAA ✓ Pass

If you want to check with other color combinations, try the [Color Contrast Checker](#).

Decimal 12693407 Background



This preview shows how black text looks on a background with the Decimal color 12693407.



This preview shows how white text looks on a background with the Decimal color 12693407.

Color Blindness Simulation

Color vision deficiency is a very complex topic, and I could not describe the different causes any better than Wikipedia does, so if you want to learn more, you should check out their [article about color blindness](#).

Dichromacy



Original Color
12693407

Protanopia
12169632

Deuteranopia
13282464



Tritanopia
12889017

Trichromacy



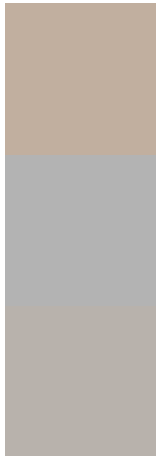
Original Color
12693407

Protanomaly
12365984

Deuteranomaly
13086112

Tritanomaly
12823728

Monochromacy



Original Color
12693407

Achromatopsia
11776947

Achromatomaly
12104364

CSS Examples

Text

The CSS property to change the color of the text to Decimal 12693407 is called "color". The color property can be set on classes, ids or directly on the HTML element.

This example shows how text in the color #C1AF9F looks like.

```
.text, #text, p{  
    color:#C1AF9F  
}
```

If you want to add a text shadow in that color use the text-shadow property, you can generate a text shadow directly with our [CSS Text Shadow Generator](#).

Here you see how black text with a 4 pixel #C1AF9F colored shadow looks like.

```
.shadow{ text-shadow: 4px 4px 2px #C1AF9F
}
```

Border

The CSS property to change the border of an element to Decimal 12693407 is called "border". The border property can be set on classes, ids or directly on the HTML element.

This example shows the color as border, it can be applied via the CSS property "border" or "border-color".

```
.border, #border, table{ border:4px solid
#C1AF9F }
```

If only the border color should be changed use the property `border-color`.

```
.border{ border-color:#C1AF9F }
```

If you want to add a box shadow in that color use:

Here you see how a box with a 4 pixel #C1AF9F colored shadow looks like.

```
.boxshadow{ -moz-box-shadow:4px 4px 4px  
4px #C1AF9F; -webkit-box-shadow:4px 4px  
4px 4px #C1AF9F; box-shadow:4px 4px 4px  
4px #C1AF9F }
```

Background

The CSS property to change the background color of an element to Decimal 12693407 is called "background". The background property can be set on classes, ids or directly on the HTML element.

```
.background, #background, body{  
background:#C1AF9F }
```

If only the background color should be changed can be used:

```
.background{ background-color:#C1AF9F }
```

This example shows the color as background, it is applied via the CSS property "background".

To optimize and compress your CSS code, you can use our [online CSS compressor and optimizer](#) based on csstidy. If you want to create a linear or radial gradient as background or border, check our [CSS Gradient Generator](#).

Hey! You found this booklet interesting? Support Converting Colors with the new Membership Option!

The pro membership hides all ads, plus gives you double the colors in the color bucket, and more awesome pro features!

[Learn more, Memberships starting at \\$2.50/m!](#)

**Follow me
on Twitter!**

@ConvertingColor