

Converting Colors

Decimal(12693434)

Have a look what the booklet for
Decimal(12693434) contains.

Decimal(12693434)	3
<i>Conversions</i>	4
<i>Details</i>	6
<i>Harmonies</i>	11
<i>Previews</i>	23
<i>Color Blindness Simulation</i>	26
<i>CSS Examples</i>	29

Color

Decimal(12693434)

Conversions

Conversions Part 1

Format	Color
Hex	C1AFBA
RGB	193, 175, 186
RGB Percent	76%, 69%, 73%
CMY	0.2431, 0.3137, 0.2706
CMYK	0.00, 0.09, 0.04, 0.24
HSL	323°, 13%, 72%
HSV	323°, 9%, 76%
XYZ	46.1852, 45.5426, 52.8107
YIQ	181.6360, 7.1970, 7.2370

Conversions

Conversions Part 2

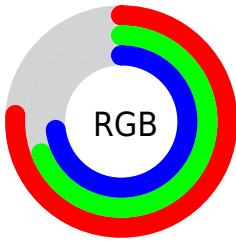
Format	Color
RYB	193, 175, 186
Decimal	12693434
CIELab	73.25, 8.40, -3.26
CIELCh	73, 9.013, 338.770
Yxy	45.5426, 0.3195, 0.3151
Android (android.graphics.Color)	4290883514 (0xFFC1AFBA)
YUV	181.6360, 2.1515, 9.9662
Hunter-Lab	67.4852, 4.0618, 0.8421

Details

The Decimal color **12693434** is a light color, and the websafe version is hex **CCCCCC**. A complement of this color would be **11518390**, and the grayscale version is **11974326**.

A 20% lighter version of the original color is **16377842**, and **9141125** is the 20% darker color. If you saturate the color by 10%, you get **12688562**, and if you desaturate by 10%, it is **12698306**.

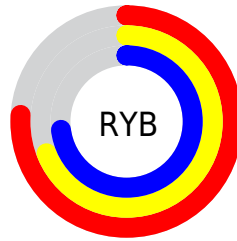
Distribution



Red (76%)

Green (69%)

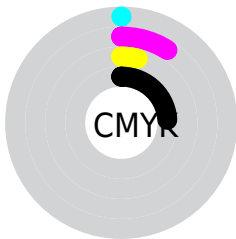
Blue (73%)



Red (76%)

Yellow (69%)

Blue (73%)

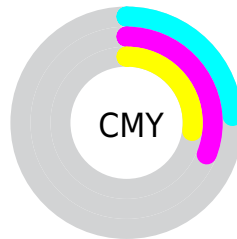


Cyan (0%)

Magenta (9%)

Yellow (4%)

Black (24%)



Cyan (24%)

Magenta (31%)

Yellow (27%)

Brightness & Saturation Gradients

These gradients show how the Decimal color 12693434 changes by changing the brightness by 10 percent. The first figure shows a shift by +10% for each color and the second figure -10%.

Similar to the brightness gradients but the following saturation gradients show a change of the Decimal color 12693434 by changing the saturation by 10% instead.

■ 12693434

■ 12693434

16777215

■ 10917023

■ 16377842

■ 9141125

■ 7496300

■ 5851731

■ 4338492

■ 2891303

■ 1574418

■ 0

■ 12693434

■ 12693434

12688562

12698306

12683435

12703433

12678563

12708305

12673692

12713176

12668820

12713952

12663693

12713959

12658821

12713967

12653950

12713974

12648822

12713982

Harmonies

Analogous

The Analogous color harmony consists of three colors that are next to each other on the color wheel.



12169665



12693434



13020850

Triad

The Triadic color harmony groups three colors that are evenly spaced from another and form a triangle on the color wheel.



12693434



12104868



10533054

Complementary

The Complementary color scheme is a pair of colors which are on the opposite of each other on the color wheel.



12693434



11518390

Split Complementary

Split-complementary colors differ from the complementary color scheme. The scheme consists of three colors, the original color and two neighbors of the complement color.



10533302



12693434



11515815

Square

The Square scheme is like the rectangle color scheme, but the four colors are evenly spaced on the color wheel.



12693434



12628389



10926254



10860227

Rectangle

The Rectangle color scheme consists of four colors that form a rectangle on the color wheel.



12693434



13021100



10926254



10533307

Sweetspot

The Sweet Spot groups the original color and five complimentary colors.



12693434



16446199



11972545



8222843



16579836



8224125

Same Dimension

The Same Dimension uses a secret algorithm to generate beautiful new colors.



12693434



16441071



12693425



6379357



10551394



2162708

Inverse Universe

The Inverse Universe completely reimagines the original color for something new.



12693434



16441071



11518399



6379357



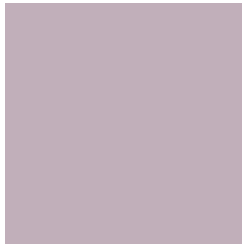
10551394



2162708

Previews

White Background



This preview shows how the Decimal color 12693434 looks on a white background.

Color Contrast Check

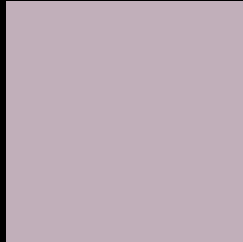
Large Text (above 18pt) WCAG AA × Fail

Any Text WCAG AA × Fail

Large Text (above 18pt) WCAG AAA × Fail

Any Text WCAG AAA × Fail

Black Background



This preview shows how the Decimal color 12693434 looks on a black background.

Color Contrast Check

Large Text (above 18pt) WCAG AA ✓ Pass

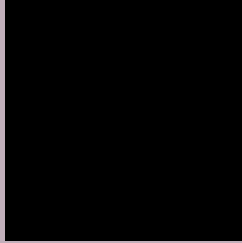
Any Text WCAG AA ✓ Pass

Large Text (above 18pt) WCAG AAA ✓ Pass

Any Text WCAG AAA ✓ Pass

If you want to check with other color combinations, try the [Color Contrast Checker](#).

Decimal 12693434 Background



This preview shows how black text looks on a background with the Decimal color 12693434.



This preview shows how white text looks on a background with the Decimal color 12693434.

Color Blindness Simulation

Color vision deficiency is a very complex topic, and I could not describe the different causes any better than Wikipedia does, so if you want to learn more, you should check out their [article about color blindness](#).


Dichromacy



Original Color
12693434

Protanopia
11908028

Deuteranopia
12824250



Tritanopia
12693436

Trichromacy



Original Color
12693434

Protanomaly
12169915

Deuteranomaly
12758714

Tritanomaly
12693435

Monochromacy



Original Color
12693434

Achromatopsia
11974326

Achromatomaly
12235703

CSS Examples

Text

The CSS property to change the color of the text to Decimal 12693434 is called "color". The color property can be set on classes, ids or directly on the HTML element.

This example shows how text in the color #C1AFBA looks like.

```
.text, #text, p{  
    color:#C1AFBA  
}
```

If you want to add a text shadow in that color use the text-shadow property, you can generate a text shadow directly with our [CSS Text Shadow Generator](#).

Here you see how black text with a 4 pixel #C1AFBA colored shadow looks like.

```
.shadow{ text-shadow: 4px 4px 2px #C1AFBA
}
```

Border

The CSS property to change the border of an element to Decimal 12693434 is called "border". The border property can be set on classes, ids or directly on the HTML element.

This example shows the color as border, it can be applied via the CSS property "border" or "border-color".

```
.border, #border, table{ border:4px solid
#C1AFBA }
```

If only the border color should be changed use the property `border-color`.

```
.border{ border-color:#C1AFBA }
```

If you want to add a box shadow in that color use:

Here you see how a box with a 4 pixel #C1AFBA colored shadow looks like.

```
.boxshadow{ -moz-box-shadow:4px 4px 4px  
4px #C1AFBA; -webkit-box-shadow:4px 4px  
4px 4px #C1AFBA; box-shadow:4px 4px 4px  
4px #C1AFBA }
```

Background

The CSS property to change the background color of an element to Decimal 12693434 is called "background". The background property can be set on classes, ids or directly on the HTML element.

```
.background, #background, body{  
background:#C1AFBA }
```

If only the background color should be changed can be used:

```
.background{ background-color:#C1AFBA }
```

This example shows the color as background, it is applied via the CSS property "background".

To optimize and compress your CSS code, you can use our [online CSS compressor and optimizer](#) based on csstidy. If you want to create a linear or radial gradient as background or border, check our [CSS Gradient Generator](#).

Hey! You found this booklet interesting? Support Converting Colors with the new Membership Option!

The pro membership hides all ads, plus gives you double the colors in the color bucket, and more awesome pro features!

[Learn more, Memberships starting at \\$2.50/m!](#)

**Follow me
on Twitter!**

@ConvertingColor