

Converting Colors

Decimal(12745845)

Have a look what the booklet for
Decimal(12745845) contains.

Decimal(12745845)	3
<i>Conversions</i>	4
<i>Details</i>	6
<i>Harmonies</i>	11
<i>Previews</i>	23
<i>Color Blindness Simulation</i>	26
<i>CSS Examples</i>	29

Color

Decimal(12745845)

Conversions

Conversions Part 1

Format	Color
Hex	C27C75
RGB	194, 124, 117
RGB Percent	76%, 49%, 46%
CMY	0.2392, 0.5137, 0.5412
CMYK	0.00, 0.36, 0.40, 0.24
HSL	5°, 39%, 61%
HSV	5°, 40%, 76%
XYZ	32.6667, 27.1690, 20.3520
YIQ	144.1320, 43.9670, 12.6630

Conversions

Conversions Part 2

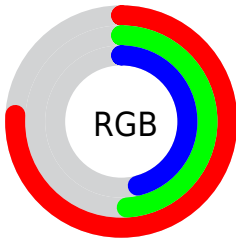
Format	Color
RYB	194, 125, 117
Decimal	12745845
CIELab	59.13, 26.40, 15.18
CIElCh	59, 30.451, 29.907
Yxy	27.1690, 0.4074, 0.3388
Android (android.graphics.Color)	4290935925 (0xFFC27C75)
YUV	144.1320, -13.3761, 43.7342
Hunter-Lab	52.1239, 20.6513, 13.3366

Details

The Decimal color **12745845** is a dark color, and the websafe version is hex **CC9999**. A complement of this color would be **7715778**, and the grayscale version is **9474192**.

A 20% lighter version of the original color is **16560553**, and **9062981** is the 20% darker color. If you saturate the color by 10%, you get **12741218**, and if you desaturate by 10%, it is **12750472**.

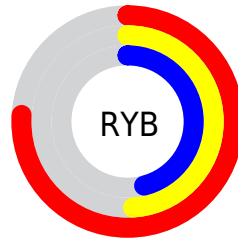
Distribution



Red (76%)

Green (49%)

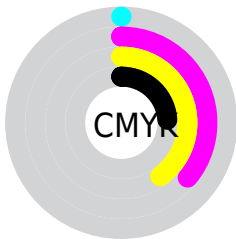
Blue (46%)



Red (76%)

Yellow (49%)

Blue (46%)

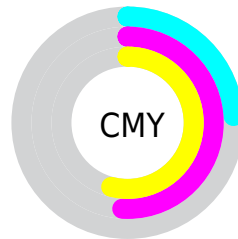


Cyan (0%)

Magenta (36%)

Yellow (40%)

Black (24%)



Cyan (24%)

Magenta (51%)

Yellow (54%)

Brightness & Saturation Gradients

These gradients show how the Decimal color 12745845 changes by changing the brightness by 10 percent. The first figure shows a shift by +10% for each color and the second figure -10%.

Similar to the brightness gradients but the following saturation gradients show a change of the Decimal color 12745845 by changing the saturation by 10% instead.

 12745845

 12745845

16777215

 10904412

 16560553

 9062981


 16764356

 7287343

 16771552

 5511962

16777213

 3867648

 2359297

 0

 12745845

 12745845

 12741218

 12750472

 12736846

 12754844

 12732219

 12759471

 12727591

 12764099

 12723220

 12768470

 12718593

 12773097

 12718592

 12777469

 12779519

Harmonies

Analogous

The Analogous color harmony consists of three colors that are next to each other on the color wheel.



12679823



12745845



11961185

Triad

The Triadic color harmony groups three colors that are evenly spaced from another and form a triangle on the color wheel.



12745845



6658675



6918595

Complementary

The Complementary color scheme is a pair of colors which are on the opposite of each other on the color wheel.



12745845



7715778

Split Complementary

Split-complementary colors differ from the complementary color scheme. The scheme consists of three colors, the original color and two neighbors of the complement color.



4167868



12745845



4496781

Square

The Square scheme is like the rectangle color scheme, but the four colors are evenly spaced on the color wheel.



12745845



8688991



2923688



9537469

Rectangle

The Rectangle color scheme consists of four colors that form a rectangle on the color wheel.



12745845



11111002



2923688



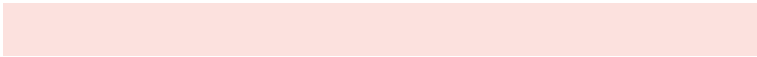
5936322

Sweetspot

The Sweet Spot groups the original color and five complimentary colors.



12745845



16572894



12744124



8417134



0



8421504

Same Dimension

The Same Dimension uses a secret algorithm to generate beautiful new colors.



12745845



16551555



12755573



6379607



10555136



2163456

Inverse Universe

The Inverse Universe completely reimagines the original color for something new.



7715778



8647164



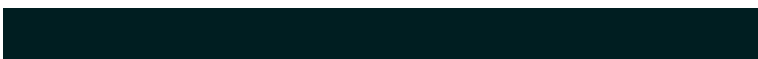
7706050



5726305



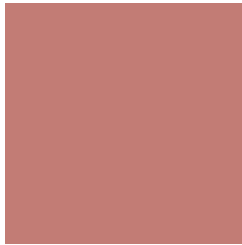
37537



7713

Previews

White Background



This preview shows how the Decimal color 12745845 looks on a white background.

Color Contrast Check

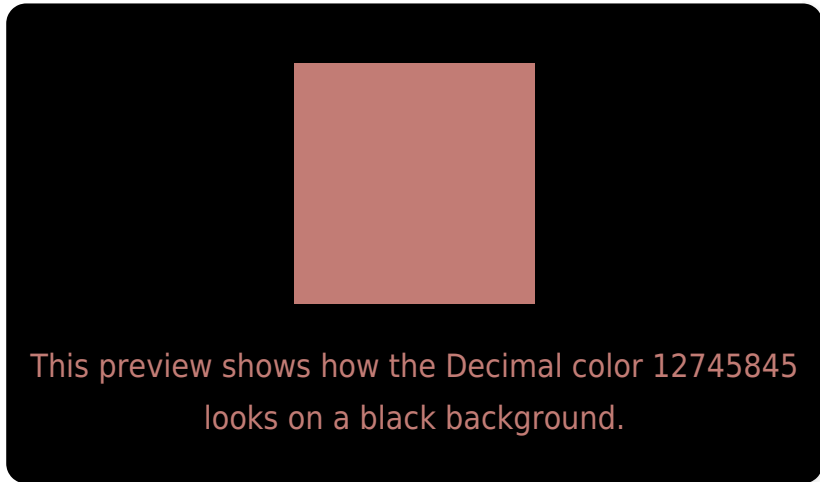
Large Text (above 18pt) WCAG AA ✓ Pass

Any Text WCAG AA ✗ Fail

Large Text (above 18pt) WCAG AAA ✗ Fail

Any Text WCAG AAA ✗ Fail

Black Background



Color Contrast Check

Large Text (above 18pt) WCAG AA ✓ Pass

Any Text WCAG AA ✓ Pass

Large Text (above 18pt) WCAG AAA ✓ Pass

Any Text WCAG AAA × Fail

If you want to check with other color combinations, try the [Color Contrast Checker](#).

Decimal 12745845 Background



This preview shows how black text looks on a background with the Decimal color 12745845.



This preview shows how white text looks on a background with the Decimal color 12745845.

Color Blindness Simulation

Color vision deficiency is a very complex topic, and I could not describe the different causes any better than Wikipedia does, so if you want to learn more, you should check out their [article about color blindness](#).

Dichromacy





Tritanopia
12810883

Trichromacy



Original Color
12745845

Protanomaly
10848123

Deuteranomaly
11568244

Tritanomaly
12811134

Monochromacy



Original Color
12745845

Achromatopsia
9474192

Achromatomaly
10652038

CSS Examples

Text

The CSS property to change the color of the text to Decimal 12745845 is called "color". The color property can be set on classes, ids or directly on the HTML element.

This example shows how text in the color #C27C75 looks like.

```
.text, #text, p{  
  color:#C27C75  
}
```

If you want to add a text shadow in that color use the text-shadow property, you can generate a text shadow directly with our [CSS Text Shadow Generator](#).

Here you see how black text with a 4 pixel #C27C75 colored shadow looks like.

```
.shadow{ text-shadow: 4px 4px 2px #C27C75
}
```

Border

The CSS property to change the border of an element to Decimal 12745845 is called "border". The border property can be set on classes, ids or directly on the HTML element.

This example shows the color as border, it can be applied via the CSS property "border" or "border-color".

```
.border, #border, table{ border:4px solid
#C27C75 }
```

If only the border color should be changed use the property `border-color`.

```
.border{ border-color:#C27C75 }
```

If you want to add a box shadow in that color use:

Here you see how a box with a 4 pixel #C27C75 colored shadow looks like.

```
.boxshadow{ -moz-box-shadow:4px 4px 4px  
4px #C27C75; -webkit-box-shadow:4px 4px  
4px 4px #C27C75; box-shadow:4px 4px 4px  
4px #C27C75 }
```

Background

The CSS property to change the background color of an element to Decimal 12745845 is called "background". The background property can be set on classes, ids or directly on the HTML element.

```
.background, #background, body{  
background:#C27C75 }
```

If only the background color should be changed can be used:

```
.background{ background-color:#C27C75 }
```

This example shows the color as background, it is applied via the CSS property "background".

To optimize and compress your CSS code, you can use our [online CSS compressor and optimizer](#) based on csstidy. If you want to create a linear or radial gradient as background or border, check our [CSS Gradient Generator](#).

Hey! You found this booklet interesting? Support Converting Colors with the new Membership Option!

The pro membership hides all ads, plus gives you double the colors in the color bucket, and more awesome pro features!

[Learn more, Memberships starting at \\$2.50/m!](#)

**Follow me
on Twitter!**

@ConvertingColor