

Converting Colors

Decimal(12750733)

Have a look what the booklet for
Decimal(12750733) contains.

Decimal(12750733)	3
<i>Conversions</i>	4
<i>Details</i>	6
<i>Harmonies</i>	11
<i>Previews</i>	23
<i>Color Blindness Simulation</i>	26
<i>CSS Examples</i>	29

Color

Decimal(12750733)

Conversions

Conversions Part 1

Format	Color
Hex	C28F8D
RGB	194, 143, 141
RGB Percent	76%, 56%, 55%
CMY	0.2392, 0.4392, 0.4471
CMYK	0.00, 0.26, 0.27, 0.24
HSL	2°, 30%, 66%
HSV	2°, 27%, 76%
XYZ	36.8783, 33.0373, 29.6324
YIQ	158.0210, 31.0380, 10.1900

Conversions

Conversions Part 2

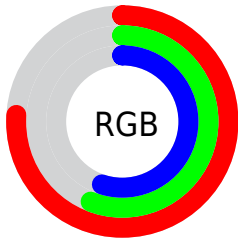
Format	Color
RYB	194, 143, 141
Decimal	12750733
CIELab	64.19, 19.03, 8.65
CIElCh	64, 20.905, 24.449
Yxy	33.0373, 0.3705, 0.3319
Android (android.graphics.Color)	4290940813 (0xFFC28F8D)
YUV	158.0210, -8.3914, 31.5536
Hunter-Lab	57.4781, 13.9400, 9.6681

Details

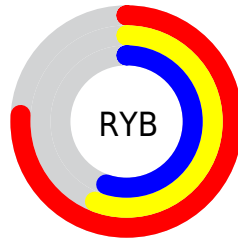
The Decimal color **12750733** is a light color, and the websafe version is hex **CC9999**. A complement of this color would be **9289922**, and the grayscale version is **10395294**.

A 20% lighter version of the original color is **16500163**, and **9133147** is the 20% darker color. If you saturate the color by 10%, you get **12745850**, and if you desaturate by 10%, it is **12755616**.

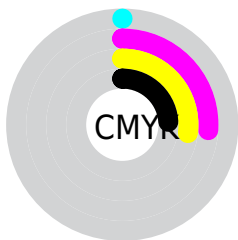
Distribution



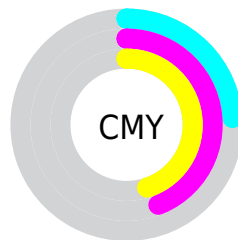
- Red (76%)
- Green (56%)
- Blue (55%)



- Red (76%)
- Yellow (56%)
- Blue (55%)



- Cyan (0%)
- Magenta (26%)
- Yellow (27%)
- Black (24%)



- Cyan (24%)
- Magenta (44%)
- Yellow (45%)

Brightness & Saturation Gradients

These gradients show how the Decimal color 12750733 changes by changing the brightness by 10 percent. The first figure shows a shift by +10% for each color and the second figure -10%.

Similar to the brightness gradients but the following saturation gradients show a change of the Decimal color 12750733 by changing the saturation by 10% instead.

 12750733

 12750733

16777215

 10909043

 16500163

 9133147

 16769502

 7423044

 16776955

 5713453

 4134937

 2686976

 0

 12750733

 12750733

 12745850

 12755616

 12741222

 12760244

 12736339

 12765127

 12731455

 12770011

 12726828

 12774638

 12721945

 12779519

 12717061

 12715776

Harmonies

Analogous

The Analogous color harmony consists of three colors that are next to each other on the color wheel.



12488608



12750733



12358526

Triad

The Triadic color harmony groups three colors that are evenly spaced from another and form a triangle on the color wheel.



12750733



8692869



8494784

Complementary

The Complementary color scheme is a pair of colors which are on the opposite of each other on the color wheel.



12750733



9289922

Split Complementary

Split-complementary colors differ from the complementary color scheme. The scheme consists of three colors, the original color and two neighbors of the complement color.



7185337



12750733



7448215

Square

The Square scheme is like the rectangle color scheme, but the four colors are evenly spaced on the color wheel.



12750733



10067833



6792874



10131645

Rectangle

The Rectangle color scheme consists of four colors that form a rectangle on the color wheel.



12750733



11769720



6792874



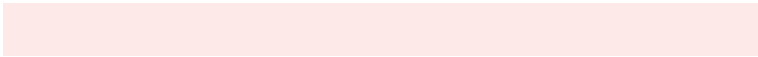
7971007

Sweetspot

The Sweet Spot groups the original color and five complimentary colors.



12750733



16574952



12750272



8418163



0



8421504

Same Dimension

The Same Dimension uses a secret algorithm to generate beautiful new colors.



12750733



16559273



12757389



6379607



10552832



2162944

Inverse Universe

The Inverse Universe completely reimagines the original color for something new.



9289922



11139580



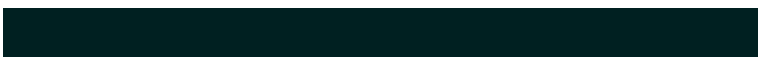
9283266



5726561



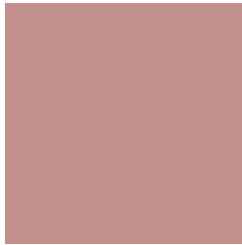
39841



8225

Previews

White Background



This preview shows how the Decimal color 12750733 looks on a white background.

Color Contrast Check

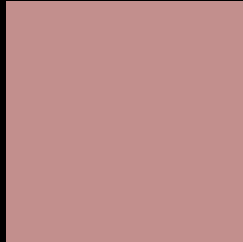
Large Text (above 18pt) WCAG AA × Fail

Any Text WCAG AA × Fail

Large Text (above 18pt) WCAG AAA × Fail

Any Text WCAG AAA × Fail

Black Background



This preview shows how the Decimal color 12750733 looks on a black background.

Color Contrast Check

Large Text (above 18pt) WCAG AA ✓ Pass

Any Text WCAG AA ✓ Pass

Large Text (above 18pt) WCAG AAA ✓ Pass

Any Text WCAG AAA ✓ Pass

If you want to check with other color combinations, try the [Color Contrast Checker](#).

Decimal 12750733 Background



This preview shows how black text looks on a background with the Decimal color 12750733.



This preview shows how white text looks on a background with the Decimal color 12750733.

Color Blindness Simulation

Color vision deficiency is a very complex topic, and I could not describe the different causes any better than Wikipedia does, so if you want to learn more, you should check out their [article about color blindness](#).

Dichromacy





Tritanopia
12815768

Trichromacy



Original Color
12750733

Protanomaly
11376529

Deuteranomaly
12030860

Tritanomaly
12816020

Monochromacy



Original Color
12750733

Achromatopsia
10395294

Achromatomaly
11245976

CSS Examples

Text

The CSS property to change the color of the text to Decimal 12750733 is called "color". The color property can be set on classes, ids or directly on the HTML element.

This example shows how text in the color #C28F8D looks like.

```
.text, #text, p{  
    color:#C28F8D  
}
```

If you want to add a text shadow in that color use the text-shadow property, you can generate a text shadow directly with our [CSS Text Shadow Generator](#).

Here you see how black text with a 4 pixel #C28F8D colored shadow looks like.

```
.shadow{ text-shadow: 4px 4px 2px #C28F8D
}
```

Border

The CSS property to change the border of an element to Decimal 12750733 is called "border". The border property can be set on classes, ids or directly on the HTML element.

This example shows the color as border, it can be applied via the CSS property "border" or "border-color".

```
.border, #border, table{ border:4px solid
#C28F8D }
```

If only the border color should be changed use the property `border-color`.

```
.border{ border-color:#C28F8D }
```

If you want to add a box shadow in that color use:

Here you see how a box with a 4 pixel #C28F8D colored shadow looks like.

```
.boxshadow{ -moz-box-shadow:4px 4px 4px  
4px #C28F8D; -webkit-box-shadow:4px 4px  
4px 4px #C28F8D; box-shadow:4px 4px 4px  
4px #C28F8D }
```

Background

The CSS property to change the background color of an element to Decimal 12750733 is called "background". The background property can be set on classes, ids or directly on the HTML element.

```
.background, #background, body{  
background:#C28F8D }
```

If only the background color should be changed can be used:

```
.background{ background-color:#C28F8D }
```

This example shows the color as background, it is applied via the CSS property "background".

To optimize and compress your CSS code, you can use our [online CSS compressor and optimizer](#) based on csstidy. If you want to create a linear or radial gradient as background or border, check our [CSS Gradient Generator](#).

Hey! You found this booklet interesting? Support Converting Colors with the new Membership Option!

The pro membership hides all ads, plus gives you double the colors in the color bucket, and more awesome pro features!

[Learn more, Memberships starting at \\$2.50/m!](#)

**Follow me
on Twitter!**

@ConvertingColor