

Converting Colors

Decimal(12751747)

Have a look what the booklet for
Decimal(12751747) contains.

Decimal(12751747)	3
<i>Conversions</i>	4
<i>Details</i>	6
<i>Harmonies</i>	11
<i>Previews</i>	23
<i>Color Blindness Simulation</i>	26
<i>CSS Examples</i>	29

Color

Decimal(12751747)

Conversions

Conversions Part 1

Format	Color
Hex	C29383
RGB	194, 147, 131
RGB Percent	76%, 58%, 51%
CMY	0.2392, 0.4235, 0.4863
CMYK	0.00, 0.24, 0.32, 0.24
HSL	15°, 34%, 64%
HSV	15°, 32%, 76%
XYZ	36.7786, 33.9755, 26.0922
YIQ	159.2290, 33.1480, 4.9880

Conversions

Conversions Part 2

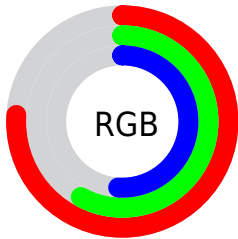
Format	Color
RYB	194, 152, 131
Decimal	12751747
CIELab	64.94, 15.46, 15.33
CIELCh	65, 21.773, 44.759
Yxy	33.9755, 0.3798, 0.3508
Android (android.graphics.Color)	4290941827 (0xFFC29383)
YUV	159.2290, -13.9169, 30.4942
Hunter-Lab	58.2885, 10.6243, 14.2614

Details

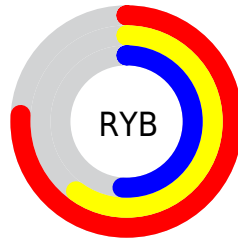
The Decimal color **12751747** is a light color, and the websafe version is hex **CC9999**. A complement of this color would be **8630978**, and the grayscale version is **10461087**.

A 20% lighter version of the original color is **16566712**, and **9134162** is the 20% darker color. If you saturate the color by 10%, you get **12748144**, and if you desaturate by 10%, it is **12755350**.

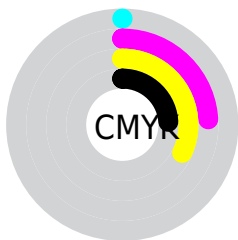
Distribution



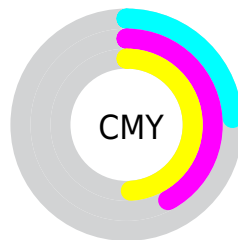
- Red (76%)
- Green (58%)
- Blue (51%)



- Red (76%)
- Yellow (60%)
- Blue (51%)



- Cyan (0%)
- Magenta (24%)
- Yellow (32%)
- Black (24%)



- Cyan (24%)
- Magenta (42%)
- Yellow (49%)

Brightness & Saturation Gradients

These gradients show how the Decimal color 12751747 changes by changing the brightness by 10 percent. The first figure shows a shift by +10% for each color and the second figure -10%.

Similar to the brightness gradients but the following saturation gradients show a change of the Decimal color 12751747 by changing the saturation by 10% instead.

 12751747

 12751747

16777215

 10910058

 16566712

 9134162

 16770516

 7424059

 16777200

 5714469

 4070416

 2557184

 0

 12751747

 12751747

 12748144

 12755350

 12744284

 12759210

 12740681

 12762813

 12736821

 12766673

 12733218

 12770276

 12729359

 12774135

 12726528

 12777727

 12779519

Harmonies

Analogous

The Analogous color harmony consists of three colors that are next to each other on the color wheel.



13013141



12751747



11901304

Triad

The Triadic color harmony groups three colors that are evenly spaced from another and form a triangle on the color wheel.



12751747



7841939



9673923

Complementary

The Complementary color scheme is a pair of colors which are on the opposite of each other on the color wheel.



12751747



8630978

Split Complementary

Split-complementary colors differ from the complementary color scheme. The scheme consists of three colors, the original color and two neighbors of the complement color.



7971523



12751747



6859175

Square

The Square scheme is like the rectangle color scheme, but the four colors are evenly spaced on the color wheel.



12751747



9217409



6858680



11376057

Rectangle

The Rectangle color scheme consists of four colors that form a rectangle on the color wheel.



12751747



11115895



6858680



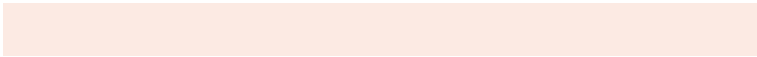
9084612

Sweetspot

The Sweet Spot groups the original color and five complimentary colors.



12751747



16575203



12747698



8418416



0



8421504

Same Dimension

The Same Dimension uses a secret algorithm to generate beautiful new colors.



12751747



16561050



12759683



6380119



10561792



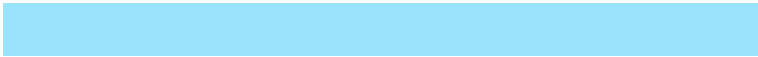
2164736

Inverse Universe

The Inverse Universe completely reimagines the original color for something new.



8630978



10150908



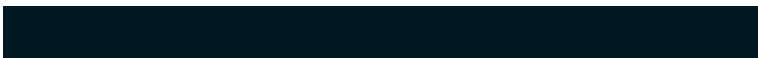
8623042



5725793



30881



6433

Previews

White Background



This preview shows how the Decimal color 12751747 looks on a white background.

Color Contrast Check

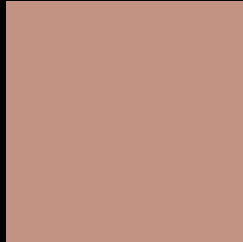
Large Text (above 18pt) WCAG AA × Fail

Any Text WCAG AA × Fail

Large Text (above 18pt) WCAG AAA × Fail

Any Text WCAG AAA × Fail

Black Background



This preview shows how the Decimal color 12751747 looks on a black background.

Color Contrast Check

Large Text (above 18pt) WCAG AA ✓ Pass

Any Text WCAG AA ✓ Pass

Large Text (above 18pt) WCAG AAA ✓ Pass

Any Text WCAG AAA ✓ Pass

If you want to check with other color combinations, try the [Color Contrast Checker](#).

Decimal 12751747 Background



This preview shows how black text looks on a background with the Decimal color 12751747.

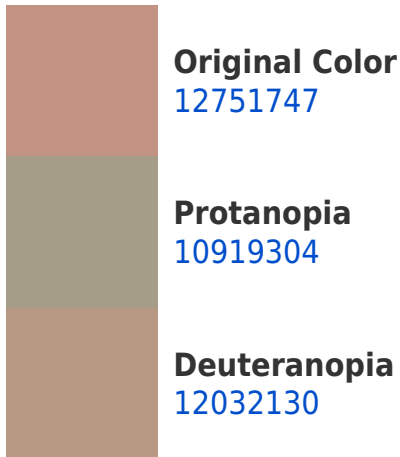


This preview shows how white text looks on a background with the Decimal color 12751747.

Color Blindness Simulation

Color vision deficiency is a very complex topic, and I could not describe the different causes any better than Wikipedia does, so if you want to learn more, you should check out their [article about color blindness](#).

Dichromacy





Tritanopia
12882075

Trichromacy



Original Color
12751747

Protanomaly
11573638

Deuteranomaly
12293762

Tritanomaly
12816786

Monochromacy



Original Color
12751747

Achromatopsia
10461087

Achromatomaly
11312021

CSS Examples

Text

The CSS property to change the color of the text to Decimal 12751747 is called "color". The color property can be set on classes, ids or directly on the HTML element.

This example shows how text in the color #C29383 looks like.

```
.text, #text, p{  
    color:#C29383  
}
```

If you want to add a text shadow in that color use the text-shadow property, you can generate a text shadow directly with our [CSS Text Shadow Generator](#).

Here you see how black text with a 4 pixel #C29383 colored shadow looks like.

```
.shadow{ text-shadow: 4px 4px 2px #C29383
}
```

Border

The CSS property to change the border of an element to Decimal 12751747 is called "border". The border property can be set on classes, ids or directly on the HTML element.

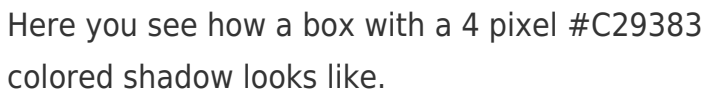
This example shows the color as border, it can be applied via the CSS property "border" or "border-color".

```
.border, #border, table{ border:4px solid
#C29383 }
```

If only the border color should be changed use the property `border-color`.

```
.border{ border-color:#C29383 }
```

If you want to add a box shadow in that color use:



Here you see how a box with a 4 pixel #C29383 colored shadow looks like.

```
.boxshadow{ -moz-box-shadow:4px 4px 4px  
4px #C29383; -webkit-box-shadow:4px 4px  
4px 4px #C29383; box-shadow:4px 4px 4px  
4px #C29383 }
```

Background

The CSS property to change the background color of an element to Decimal 12751747 is called "background". The background property can be set on classes, ids or directly on the HTML element.

```
.background, #background, body{  
background:#C29383 }
```

If only the background color should be changed can be used:

```
.background{ background-color:#C29383 }
```

This example shows the color as background, it is applied via the CSS property "background".

To optimize and compress your CSS code, you can use our [online CSS compressor and optimizer](#) based on csstidy. If you want to create a linear or radial gradient as background or border, check our [CSS Gradient Generator](#).

Hey! You found this booklet interesting? Support Converting Colors with the new Membership Option!

The pro membership hides all ads, plus gives you double the colors in the color bucket, and more awesome pro features!

[Learn more, Memberships starting at \\$2.50/m!](#)

**Follow me
on Twitter!**

@ConvertingColor