

# Converting Colors

Decimal(12751999)

Have a look what the booklet for  
Decimal(12751999) contains.

<b>Decimal(12751999)</b> .....	3
<i><b>Conversions</b></i> .....	4
<i><b>Details</b></i> .....	6
<i><b>Harmonies</b></i> .....	11
<i><b>Previews</b></i> .....	23
<i><b>Color Blindness Simulation</b></i> .....	26
<i><b>CSS Examples</b></i> .....	29

# **Color**

**Decimal(12751999)**

# Conversions

## Conversions Part 1

Format	Color
Hex	C2947F
RGB	194, 148, 127
RGB Percent	76%, 58%, 50%
CMY	0.2392, 0.4196, 0.5020
CMYK	0.00, 0.24, 0.35, 0.24
HSL	19°, 35%, 63%
HSV	19°, 35%, 76%
XYZ	36.6688, 34.1814, 24.7437
YIQ	159.3600, 34.1570, 3.2210

# Conversions

## Conversions Part 2

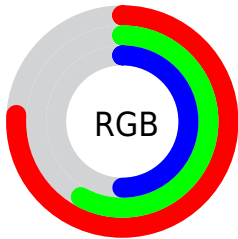
<b>Format</b>	<b>Color</b>
<b>RYB</b>	194, 158, 127
Decimal	12751999
CIELab	65.11, 14.39, 17.79
CIELCh	65, 22.884, 51.025
Yxy	34.1814, 0.3836, 0.3576
Android (android.graphics.Color)	4290942079 (0xFFC2947F)
YUV	159.3600, -15.9535, 30.3793
Hunter-Lab	58.4649, 9.6404, 15.8325

# Details

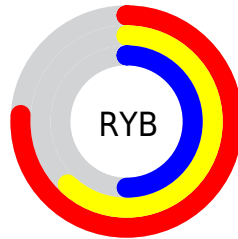
The Decimal color **12751999** is a light color, and the websafe version is hex **CC9999**. A complement of this color would be **8367554**, and the grayscale version is **10461087**.

A 20% lighter version of the original color is **16566964**, and **9134414** is the 20% darker color. If you saturate the color by 10%, you get **12748652**, and if you desaturate by 10%, it is **12755346**.

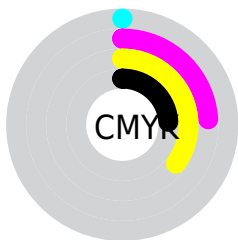
# Distribution



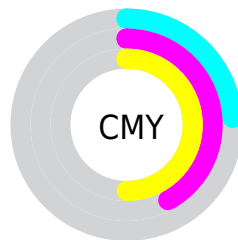
- Red (76%)
- Green (58%)
- Blue (50%)



- Red (76%)
- Yellow (62%)
- Blue (50%)



- Cyan (0%)
- Magenta (24%)
- Yellow (35%)
- Black (24%)



- Cyan (24%)
- Magenta (42%)
- Yellow (50%)

# Brightness & Saturation Gradients

These gradients show how the Decimal color 12751999 changes by changing the brightness by 10 percent. The first figure shows a shift by +10% for each color and the second figure -10%.

Similar to the brightness gradients but the following saturation gradients show a change of the Decimal color 12751999 by changing the saturation by 10% instead.



 12751999

 12751999

16777215

 10910310

 16566964

 9134414

 16770767

 7358775

 16777196

 5714721

 4070668

 2557696

 0

 12751999

 12751999

 12748652

 12755346

 12745048

 12758950

 12741701

 12762297

 12738353

 12765645

 12734750

 12769248

 12731403

 12772595

 12729600

 12775935

 12779519

# Harmonies

## Analogous

The Analogous color harmony consists of three colors that are next to each other on the color wheel.



13144208



12751999



11770742

# Triad

The Triadic color harmony groups three colors that are evenly spaced from another and form a triangle on the color wheel.



12751999



7448983



10066884

# Complementary

The Complementary color scheme is a pair of colors which are on the opposite of each other on the color wheel.



12751999



8367554

# Split Complementary

Split-complementary colors differ from the complementary color scheme. The scheme consists of three colors, the original color and two neighbors of the complement color.



8233670



12751999



6531500

# Square

The Square scheme is like the rectangle color scheme, but the four colors are evenly spaced on the color wheel.



12751999



8889988



6793149



11703480

# Rectangle

The Rectangle color scheme consists of four colors that form a rectangle on the color wheel.



12751999



10854262



6793149



9477574

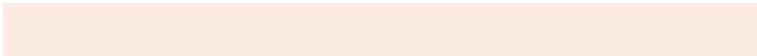


# Sweetspot

The Sweet Spot groups the original color and five complimentary colors.



12751999



16575459



12746670



8418672



0



8421504



# Same Dimension

The Same Dimension uses a secret algorithm to generate beautiful new colors.



12751999



16561557



12760447



6380119



10564096



2165248

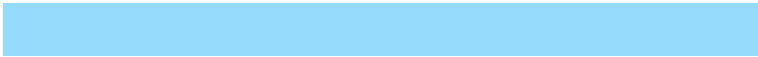


# Inverse Universe

The Inverse Universe completely reimagines the original color for something new.



8367554



9821436



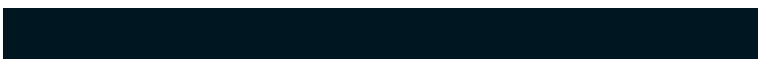
8359106



5725793



28321



5921



# Previews

## White Background



This preview shows how the Decimal color 12751999 looks on a white background.

## Color Contrast Check

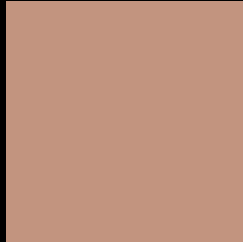
Large Text (above 18pt) WCAG AA × Fail

Any Text WCAG AA × Fail

Large Text (above 18pt) WCAG AAA × Fail

Any Text WCAG AAA × Fail

# Black Background



This preview shows how the Decimal color 12751999 looks on a black background.

## Color Contrast Check

Large Text (above 18pt) WCAG AA ✓ Pass

Any Text WCAG AA ✓ Pass

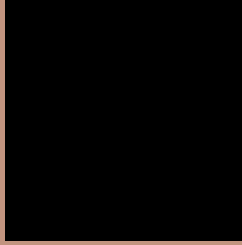
Large Text (above 18pt) WCAG AAA ✓ Pass

Any Text WCAG AAA ✓ Pass

If you want to check with other color combinations, try the [Color Contrast Checker](#).



## Decimal 12751999 Background



This preview shows how black text looks on a background with the Decimal color 12751999.



This preview shows how white text looks on a background with the Decimal color 12751999.

# Color Blindness Simulation

Color vision deficiency is a very complex topic, and I could not describe the different causes any better than Wikipedia does, so if you want to learn more, you should check out their [article about color blindness](#).

## Dichromacy





**Tritanopia**  
12947611

# Trichromacy



**Original Color**  
12751999

**Protanomaly**  
11639426

**Deuteranomaly**  
12359550

**Tritanomaly**  
12882321

# Monochromacy



**Original Color**  
12751999

**Achromatopsia**  
10461087

**Achromatomaly**  
11312019

# CSS Examples

## Text

The CSS property to change the color of the text to Decimal 12751999 is called "color". The color property can be set on classes, ids or directly on the HTML element.

This example shows how text in the color #C2947F looks like.

```
.text, #text, p{  
    color:#C2947F  
}
```

If you want to add a text shadow in that color use the text-shadow property, you can generate a text shadow directly with our [CSS Text Shadow Generator](#).

Here you see how black text with a 4 pixel #C2947F colored shadow looks like.

```
.shadow{ text-shadow: 4px 4px 2px #C2947F
}
```

## Border

The CSS property to change the border of an element to Decimal 12751999 is called "border". The border property can be set on classes, ids or directly on the HTML element.

This example shows the color as border, it can be applied via the CSS property "border" or "border-color".

```
.border, #border, table{ border:4px solid
#C2947F }
```

If only the border color should be changed use the property `border-color`.

```
.border{ border-color:#C2947F }
```

If you want to add a box shadow in that color use:

Here you see how a box with a 4 pixel #C2947F colored shadow looks like.

```
.boxshadow{ -moz-box-shadow:4px 4px 4px  
4px #C2947F; -webkit-box-shadow:4px 4px  
4px 4px #C2947F; box-shadow:4px 4px 4px  
4px #C2947F }
```

# Background

The CSS property to change the background color of an element to Decimal 12751999 is called "background". The background property can be set on classes, ids or directly on the HTML element.

```
.background, #background, body{  
background:#C2947F }
```

If only the background color should be changed can be used:

```
.background{ background-color:#C2947F }
```

This example shows the color as background, it is applied via the CSS property "background".

To optimize and compress your CSS code, you can use our [online CSS compressor and optimizer](#) based on csstidy. If you want to create a linear or radial gradient as background or border, check our [CSS Gradient Generator](#).



Hey! You found this booklet interesting? Support Converting Colors with the new Membership Option!

The pro membership hides all ads, plus gives you double the colors in the color bucket, and more awesome pro features!

**[Learn more, Memberships starting at \\$2.50/m!](#)**

**Follow me  
on Twitter!**

@ConvertingColor