

Converting Colors

Decimal(12752264)

Have a look what the booklet for
Decimal(12752264) contains.

Decimal(12752264)	3
<i>Conversions</i>	4
<i>Details</i>	6
<i>Harmonies</i>	11
<i>Previews</i>	23
<i>Color Blindness Simulation</i>	26
<i>CSS Examples</i>	29

Color

Decimal(12752264)

Conversions

Conversions Part 1

Format	Color
Hex	C29588
RGB	194, 149, 136
RGB Percent	76%, 58%, 53%
CMY	0.2392, 0.4157, 0.4667
CMYK	0.00, 0.23, 0.30, 0.24
HSL	13°, 32%, 65%
HSV	13°, 30%, 76%
XYZ	37.4395, 34.7418, 28.0251
YIQ	160.9730, 30.9930, 5.4970

Conversions

Conversions Part 2

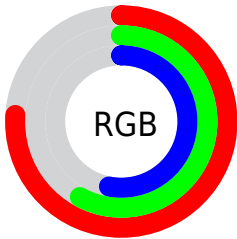
Format	Color
RYB	194, 153, 136
Decimal	12752264
CIELab	65.55, 15.03, 13.38
CIELCh	66, 20.118, 41.678
Yxy	34.7418, 0.3736, 0.3467
Android (android.graphics.Color)	4290942344 (0xFFC29588)
YUV	160.9730, -12.3117, 28.9647
Hunter-Lab	58.9422, 10.2327, 13.0690

Details

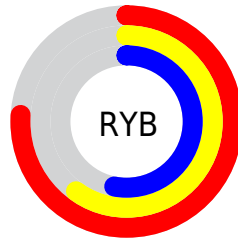
The Decimal color **12752264** is a light color, and the websafe version is hex **CC9999**. A complement of this color would be **8959426**, and the grayscale version is **10592673**.

A 20% lighter version of the original color is **16501693**, and **9134678** is the 20% darker color. If you saturate the color by 10%, you get **12748405**, and if you desaturate by 10%, it is **12756123**.

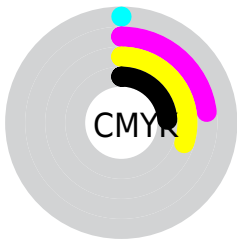
Distribution



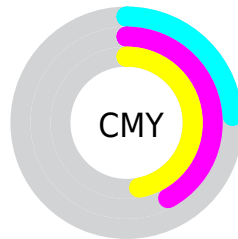
- Red (76%)
- Green (58%)
- Blue (53%)



- Red (76%)
- Yellow (60%)
- Blue (53%)



- Cyan (0%)
- Magenta (23%)
- Yellow (30%)
- Black (24%)



- Cyan (24%)
- Magenta (42%)
- Yellow (47%)

Brightness & Saturation Gradients

These gradients show how the Decimal color 12752264 changes by changing the brightness by 10 percent. The first figure shows a shift by +10% for each color and the second figure -10%.

Similar to the brightness gradients but the following saturation gradients show a change of the Decimal color 12752264 by changing the saturation by 10% instead.

 12752264

 12752264

16777215

 10910575

 16501693

 9134678

 16771033

 7424575

 16777206

 5714729

 4136469

 2623232

 0

 12752264

 12752264

 12748405

 12756123

 12744545

 12759983

 12740686

 12763842

 12736826

 12767702

 12732967

 12771561

 12729108

 12775420

 12725248

 12779263

 12724992

 12779519

Harmonies

Analogous

The Analogous color harmony consists of three colors that are next to each other on the color wheel.



12882585



12752264



12032637

Triad

The Triadic color harmony groups three colors that are evenly spaced from another and form a triangle on the color wheel.



12752264



8235411



9739970

Complementary

The Complementary color scheme is a pair of colors which are on the opposite of each other on the color wheel.



12752264



8959426

Split Complementary

Split-complementary colors differ from the complementary color scheme. The scheme consists of three colors, the original color and two neighbors of the complement color.



8168641



12752264



7383718

Square

The Square scheme is like the rectangle color scheme, but the four colors are evenly spaced on the color wheel.



12752264



9545092



7252150



11245754

Rectangle

The Rectangle color scheme consists of four colors that form a rectangle on the color wheel.



12752264



11312763



7252150



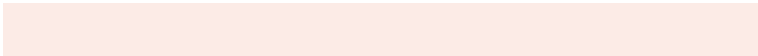
9150659

Sweetspot

The Sweet Spot groups the original color and five complimentary colors.



12752264



16575462



12748981



8418673



0



8421504

Same Dimension

The Same Dimension uses a secret algorithm to generate beautiful new colors.



12752264



16561826



12759688



6379863



10560512



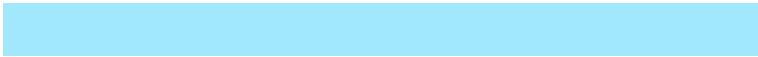
2164480

Inverse Universe

The Inverse Universe completely reimagines the original color for something new.



8959426



10676476



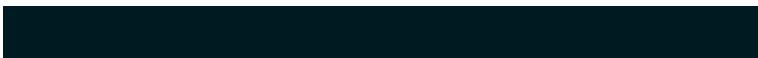
8952002



5726049



32161



6689

Previews

White Background



This preview shows how the Decimal color 12752264 looks on a white background.

Color Contrast Check

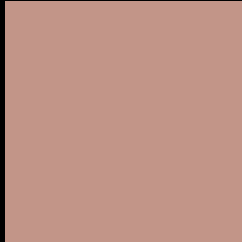
Large Text (above 18pt) WCAG AA × Fail

Any Text WCAG AA × Fail

Large Text (above 18pt) WCAG AAA × Fail

Any Text WCAG AAA × Fail

Black Background



This preview shows how the Decimal color 12752264 looks on a black background.

Color Contrast Check

Large Text (above 18pt) WCAG AA ✓ Pass

Any Text WCAG AA ✓ Pass

Large Text (above 18pt) WCAG AAA ✓ Pass

Any Text WCAG AAA ✓ Pass

If you want to check with other color combinations, try the [Color Contrast Checker](#).

Decimal 12752264 Background



This preview shows how black text looks on a background with the Decimal color 12752264.



This preview shows how white text looks on a background with the Decimal color 12752264.

Color Blindness Simulation

Color vision deficiency is a very complex topic, and I could not describe the different causes any better than Wikipedia does, so if you want to learn more, you should check out their [article about color blindness](#).

Dichromacy



Original Color
12752264

Protanopia
10985357

Deuteranopia
12032391



Tritanopia
12882589

Trichromacy



Original Color
12752264

Protanomaly
11639691

Deuteranomaly
12294279

Tritanomaly
12817301

Monochromacy



Original Color
12752264

Achromatopsia
10592673

Achromatomaly
11378072

CSS Examples

Text

The CSS property to change the color of the text to Decimal 12752264 is called "color". The color property can be set on classes, ids or directly on the HTML element.

This example shows how text in the color #C29588 looks like.

```
.text, #text, p{  
  color:#C29588  
}
```

If you want to add a text shadow in that color use the text-shadow property, you can generate a text shadow directly with our [CSS Text Shadow Generator](#).

Here you see how black text with a 4 pixel #C29588 colored shadow looks like.

```
.shadow{ text-shadow: 4px 4px 2px #C29588
}
```

Border

The CSS property to change the border of an element to Decimal 12752264 is called "border". The border property can be set on classes, ids or directly on the HTML element.

This example shows the color as border, it can be applied via the CSS property "border" or "border-color".

```
.border, #border, table{ border:4px solid
#C29588 }
```

If only the border color should be changed use the property border-color.

```
.border{ border-color:#C29588 }
```

If you want to add a box shadow in that color use:

Here you see how a box with a 4 pixel #C29588 colored shadow looks like.

```
.boxshadow{ -moz-box-shadow:4px 4px 4px  
4px #C29588; -webkit-box-shadow:4px 4px  
4px 4px #C29588; box-shadow:4px 4px 4px  
4px #C29588 }
```

Background

The CSS property to change the background color of an element to Decimal 12752264 is called "background". The background property can be set on classes, ids or directly on the HTML element.

```
.background, #background, body{  
background:#C29588 }
```

If only the background color should be changed can be used:

```
.background{ background-color:#C29588 }
```

This example shows the color as background, it is applied via the CSS property "background".

To optimize and compress your CSS code, you can use our [online CSS compressor and optimizer](#) based on csstidy. If you want to create a linear or radial gradient as background or border, check our [CSS Gradient Generator](#).

Hey! You found this booklet interesting? Support Converting Colors with the new Membership Option!

The pro membership hides all ads, plus gives you double the colors in the color bucket, and more awesome pro features!

[Learn more, Memberships starting at \\$2.50/m!](#)

**Follow me
on Twitter!**

@ConvertingColor