

# Converting Colors

Decimal(12752780)

Have a look what the booklet for  
Decimal(12752780) contains.

<b>Decimal(12752780)</b> .....	3
<i><b>Conversions</b></i> .....	4
<i><b>Details</b></i> .....	6
<i><b>Harmonies</b></i> .....	11
<i><b>Previews</b></i> .....	23
<i><b>Color Blindness Simulation</b></i> .....	26
<i><b>CSS Examples</b></i> .....	29

# **Color**

**Decimal(12752780)**

# Conversions

## Conversions Part 1

<b>Format</b>	<b>Color</b>
Hex	C2978C
RGB	194, 151, 140
RGB Percent	76%, 59%, 55%
CMY	0.2392, 0.4078, 0.4510
CMYK	0.00, 0.22, 0.28, 0.24
HSL	12°, 31%, 65%
HSV	12°, 28%, 76%
XYZ	38.0484, 35.4960, 29.6570
YIQ	162.6030, 29.1590, 5.6950

# Conversions

## Conversions Part 2

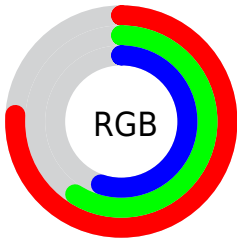
Format	Color
<b>RYB</b>	194, 154, 140
Decimal	12752780
CIELab	66.13, 14.48, 11.96
CIElCh	66, 18.781, 39.572
Yxy	35.4960, 0.3687, 0.3439
Android (android.graphics.Color)	4290942860 (0xFFC2978C)
YUV	162.6030, -11.1433, 27.5352
Hunter-Lab	59.5785, 9.7323, 12.1916

# Details

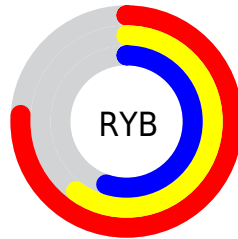
The Decimal color **12752780** is a light color, and the websafe version is hex **CC9999**. A complement of this color would be **9222082**, and the grayscale version is **10724259**.

A 20% lighter version of the original color is **16502210**, and **9135194** is the 20% darker color. If you saturate the color by 10%, you get **12748921**, and if you desaturate by 10%, it is **12756639**.

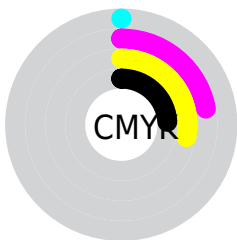
# Distribution



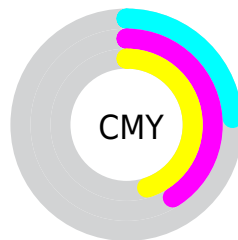
- Red (76%)
- Green (59%)
- Blue (55%)



- Red (76%)
- Yellow (60%)
- Blue (55%)



- Cyan (0%)
- Magenta (22%)
- Yellow (28%)
- Black (24%)



- Cyan (24%)
- Magenta (41%)
- Yellow (45%)

# Brightness & Saturation Gradients

These gradients show how the Decimal color 12752780 changes by changing the brightness by 10 percent. The first figure shows a shift by +10% for each color and the second figure -10%.

Similar to the brightness gradients but the following saturation gradients show a change of the Decimal color 12752780 by changing the saturation by 10% instead.



 12752780

 12752780

16777215

 10911090

 16502210

 9135194

 16771805

 7425091

 16777210

 5780780

 4136728

 2689536

 0

 12752780

 12752780

 12748921

 12756639

 12744805

 12760755

 12740946

 12764614

 12736830

 12768730

 12732971

 12772589

 12728856

 12776703

 12724996

 12779519

 12724224

# Harmonies

## Analogous

The Analogous color harmony consists of three colors that are next to each other on the color wheel.



12817820



12752780



12098690

# Triad

The Triadic color harmony groups three colors that are evenly spaced from another and form a triangle on the color wheel.



12752780



8628628



9740482

# Complementary

The Complementary color scheme is a pair of colors which are on the opposite of each other on the color wheel.



12752780



9222082

# Split Complementary

Split-complementary colors differ from the complementary color scheme. The scheme consists of three colors, the original color and two neighbors of the complement color.



8431296



12752780



7711654

# Square

The Square scheme is like the rectangle color scheme, but the four colors are evenly spaced on the color wheel.



12752780



9807494



7645622



11180987

# Rectangle

The Rectangle color scheme consists of four colors that form a rectangle on the color wheel.



12752780



11444095



7645622



9282242

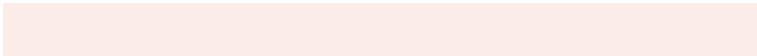


# Sweetspot

The Sweet Spot groups the original color and five complimentary colors.



12752780



16575720



12750007



8418675



0



8421504



# Same Dimension

The Same Dimension uses a secret algorithm to generate beautiful new colors.



12752780



16562857



12759692



6379863



10559744



2164480

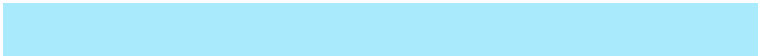


# Inverse Universe

The Inverse Universe completely reimagines the original color for something new.



9222082



11135996



9215170



5726049



32929



6689



# Previews

## White Background



This preview shows how the Decimal color 12752780 looks on a white background.

## Color Contrast Check

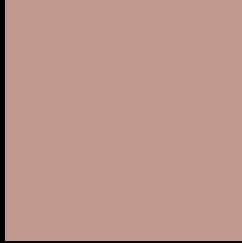
Large Text (above 18pt) WCAG AA × Fail

Any Text WCAG AA × Fail

Large Text (above 18pt) WCAG AAA × Fail

Any Text WCAG AAA × Fail

# Black Background



This preview shows how the Decimal color 12752780 looks on a black background.

## Color Contrast Check

Large Text (above 18pt) WCAG AA ✓ Pass

Any Text WCAG AA ✓ Pass

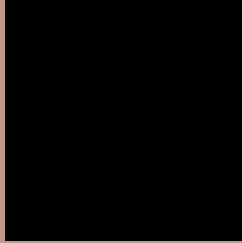
Large Text (above 18pt) WCAG AAA ✓ Pass

Any Text WCAG AAA ✓ Pass

If you want to check with other color combinations, try the [Color Contrast Checker](#).



## Decimal 12752780 Background



This preview shows how black text looks on a background with the Decimal color 12752780.



This preview shows how white text looks on a background with the Decimal color 12752780.

# Color Blindness Simulation

Color vision deficiency is a very complex topic, and I could not describe the different causes any better than Wikipedia does, so if you want to learn more, you should check out their [article about color blindness](#).


## Dichromacy



**Original Color**  
12752780

**Protanopia**  
11051153

**Deuteranopia**  
12098443



**Tritanopia**  
12883104

# Trichromacy



**Original Color**  
12752780

**Protanomaly**  
11640207

**Deuteranomaly**  
12360331

**Tritanomaly**  
12817817

# Monochromacy



**Original Color**  
12752780

**Achromatopsia**  
10724259

**Achromatomaly**  
11444123

# CSS Examples

## Text

The CSS property to change the color of the text to Decimal 12752780 is called "color". The color property can be set on classes, ids or directly on the HTML element.

This example shows how text in the color #C2978C looks like.

```
.text, #text, p{  
    color:#C2978C  
}
```

If you want to add a text shadow in that color use the text-shadow property, you can generate a text shadow directly with our [CSS Text Shadow Generator](#).

Here you see how black text with a 4 pixel #C2978C colored shadow looks like.

```
.shadow{ text-shadow: 4px 4px 2px #C2978C
}
```

## Border

The CSS property to change the border of an element to Decimal 12752780 is called "border". The border property can be set on classes, ids or directly on the HTML element.

This example shows the color as border, it can be applied via the CSS property "border" or "border-color".

```
.border, #border, table{ border:4px solid
#C2978C }
```

If only the border color should be changed use the property border-color.

```
.border{ border-color:#C2978C }
```

If you want to add a box shadow in that color use:

Here you see how a box with a 4 pixel #C2978C colored shadow looks like.

```
.boxshadow{ -moz-box-shadow:4px 4px 4px  
4px #C2978C; -webkit-box-shadow:4px 4px  
4px 4px #C2978C; box-shadow:4px 4px 4px  
4px #C2978C }
```

# Background

The CSS property to change the background color of an element to Decimal 12752780 is called "background". The background property can be set on classes, ids or directly on the HTML element.

```
.background, #background, body{  
background:#C2978C }
```

If only the background color should be changed can be used:

```
.background{ background-color:#C2978C }
```

This example shows the color as background, it is applied via the CSS property "background".

To optimize and compress your CSS code, you can use our [online CSS compressor and optimizer](#) based on csstidy. If you want to create a linear or radial gradient as background or border, check our [CSS Gradient Generator](#).



Hey! You found this booklet interesting? Support Converting Colors with the new Membership Option!

The pro membership hides all ads, plus gives you double the colors in the color bucket, and more awesome pro features!

**[Learn more, Memberships starting at \\$2.50/m!](#)**

**Follow me  
on Twitter!**

@ConvertingColor