

Converting Colors

Decimal(12753034)

Have a look what the booklet for
Decimal(12753034) contains.

Decimal(12753034)	3
<i>Conversions</i>	4
<i>Details</i>	6
<i>Harmonies</i>	11
<i>Previews</i>	23
<i>Color Blindness Simulation</i>	26
<i>CSS Examples</i>	29

Color

Decimal(12753034)

Conversions

Conversions Part 1

Format	Color
Hex	C2988A
RGB	194, 152, 138
RGB Percent	76%, 60%, 54%
CMY	0.2392, 0.4039, 0.4588
CMYK	0.00, 0.22, 0.29, 0.24
HSL	15°, 31%, 65%
HSV	15°, 29%, 76%
XYZ	38.0638, 35.7608, 28.9411
YIQ	162.9620, 29.5260, 4.5500

Conversions

Conversions Part 2

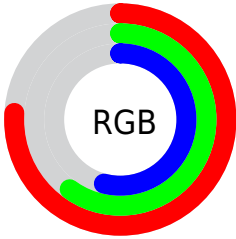
Format	Color
RYB	194, 157, 138
Decimal	12753034
CIELab	66.34, 13.65, 13.37
CIElCh	66, 19.104, 44.404
Yxy	35.7608, 0.3704, 0.3480
Android (android.graphics.Color)	4290943114 (0xFFC2988A)
YUV	162.9620, -12.3063, 27.2203
Hunter-Lab	59.8003, 8.9674, 13.1661

Details

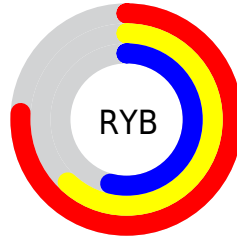
The Decimal color **12753034** is a light color, and the websafe version is hex **CC9999**. A complement of this color would be **9090242**, and the grayscale version is **10724259**.

A 20% lighter version of the original color is **16502463**, and **9135448** is the 20% darker color. If you saturate the color by 10%, you get **12749175**, and if you desaturate by 10%, it is **12756893**.

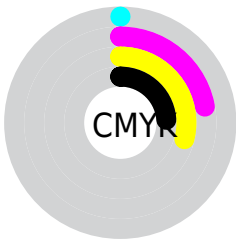
Distribution



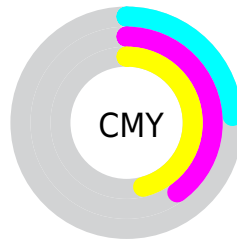
- Red (76%)
- Green (60%)
- Blue (54%)



- Red (76%)
- Yellow (62%)
- Blue (54%)



- Cyan (0%)
- Magenta (22%)
- Yellow (29%)
- Black (24%)



- Cyan (24%)
- Magenta (40%)
- Yellow (46%)

Brightness & Saturation Gradients

These gradients show how the Decimal color 12753034 changes by changing the brightness by 10 percent. The first figure shows a shift by +10% for each color and the second figure -10%.

Similar to the brightness gradients but the following saturation gradients show a change of the Decimal color 12753034 by changing the saturation by 10% instead.

 12753034

 12753034

16777215

 10911345

 16502463

 9135448

 16772059

 7425345

 16777208

 5781035

 4136982

 2689792

 0

 12753034

 12753034

 12749175

 12756893

 12745571

 12760497

 12741712

 12764356

 12738108

 12767960

 12734249

 12771819

 12730646

 12775422

 12726786

 12779263

 12726528

 12779519

Harmonies

Analogous

The Analogous color harmony consists of three colors that are next to each other on the color wheel.



12948889



12753034



12033409

Triad

The Triadic color harmony groups three colors that are evenly spaced from another and form a triangle on the color wheel.



12753034



8432279



10002626

Complementary

The Complementary color scheme is a pair of colors which are on the opposite of each other on the color wheel.



12753034



9090242

Split Complementary

Split-complementary colors differ from the complementary color scheme. The scheme consists of three colors, the original color and two neighbors of the complement color.



8562370



12753034



7646121

Square

The Square scheme is like the rectangle color scheme, but the four colors are evenly spaced on the color wheel.



12753034



9611400



7645625



11442874

Rectangle

The Rectangle color scheme consists of four colors that form a rectangle on the color wheel.



12753034



11313535



7645625



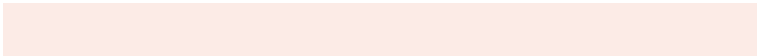
9544387

Sweetspot

The Sweet Spot groups the original color and five complimentary colors.



12753034



16575462



12749492



8418673



0



8421504

Same Dimension

The Same Dimension uses a secret algorithm to generate beautiful new colors.



12753034



16562852



12760202



6380119



10561536



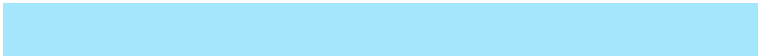
2164736

Inverse Universe

The Inverse Universe completely reimagines the original color for something new.



9090242



10807036



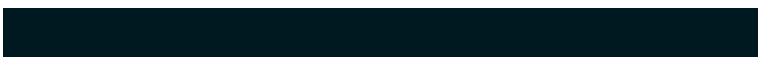
9083074



5725793



30881



6433

Previews

White Background



This preview shows how the Decimal color 12753034 looks on a white background.

Color Contrast Check

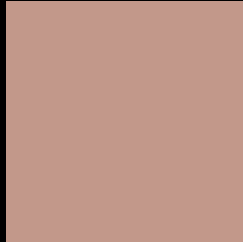
Large Text (above 18pt) WCAG AA × Fail

Any Text WCAG AA × Fail

Large Text (above 18pt) WCAG AAA × Fail

Any Text WCAG AAA × Fail

Black Background



This preview shows how the Decimal color 12753034 looks on a black background.

Color Contrast Check

Large Text (above 18pt) WCAG AA ✓ Pass

Any Text WCAG AA ✓ Pass

Large Text (above 18pt) WCAG AAA ✓ Pass

Any Text WCAG AAA ✓ Pass

If you want to check with other color combinations, try the [Color Contrast Checker](#).

Decimal 12753034 Background



This preview shows how black text looks on a background with the Decimal color 12753034.




This preview shows how white text looks on a background with the Decimal color 12753034.

Color Blindness Simulation

Color vision deficiency is a very complex topic, and I could not describe the different causes any better than Wikipedia does, so if you want to learn more, you should check out their [article about color blindness](#).

Dichromacy





Tritanopia
12883360

Trichromacy



Original Color
12753034

Protanomaly
11705997

Deuteranomaly
12425865

Tritanomaly
12818072

Monochromacy



Original Color
12753034

Achromatopsia
10724259

Achromatomaly
11444122

CSS Examples

Text

The CSS property to change the color of the text to Decimal 12753034 is called "color". The color property can be set on classes, ids or directly on the HTML element.

This example shows how text in the color #C2988A looks like.

```
.text, #text, p{  
    color:#C2988A  
}
```

If you want to add a text shadow in that color use the text-shadow property, you can generate a text shadow directly with our [CSS Text Shadow Generator](#).

Here you see how black text with a 4 pixel #C2988A colored shadow looks like.

```
.shadow{ text-shadow: 4px 4px 2px #C2988A
}
```

Border

The CSS property to change the border of an element to Decimal 12753034 is called "border". The border property can be set on classes, ids or directly on the HTML element.

This example shows the color as border, it can be applied via the CSS property "border" or "border-color".

```
.border, #border, table{ border:4px solid
#C2988A }
```

If only the border color should be changed use the property border-color.

```
.border{ border-color:#C2988A }
```

If you want to add a box shadow in that color use:

Here you see how a box with a 4 pixel #C2988A colored shadow looks like.

```
.boxshadow{ -moz-box-shadow:4px 4px 4px  
4px #C2988A; -webkit-box-shadow:4px 4px  
4px 4px #C2988A; box-shadow:4px 4px 4px  
4px #C2988A }
```

Background

The CSS property to change the background color of an element to Decimal 12753034 is called "background". The background property can be set on classes, ids or directly on the HTML element.

```
.background, #background, body{  
background:#C2988A }
```

If only the background color should be changed can be used:

```
.background{ background-color:#C2988A }
```

This example shows the color as background, it is applied via the CSS property "background".

To optimize and compress your CSS code, you can use our [online CSS compressor and optimizer](#) based on csstidy. If you want to create a linear or radial gradient as background or border, check our [CSS Gradient Generator](#).

Hey! You found this booklet interesting? Support Converting Colors with the new Membership Option!

The pro membership hides all ads, plus gives you double the colors in the color bucket, and more awesome pro features!

[Learn more, Memberships starting at \\$2.50/m!](#)

**Follow me
on Twitter!**

@ConvertingColor