

Converting Colors

Decimal(12753800)

Have a look what the booklet for
Decimal(12753800) contains.

Decimal(12753800)	3
<i>Conversions</i>	4
<i>Details</i>	6
<i>Harmonies</i>	11
<i>Previews</i>	23
<i>Color Blindness Simulation</i>	26
<i>CSS Examples</i>	29

Color

Decimal(12753800)

Conversions

Conversions Part 1

Format	Color
Hex	C29B88
RGB	194, 155, 136
RGB Percent	76%, 61%, 53%
CMY	0.2392, 0.3922, 0.4667
CMYK	0.00, 0.20, 0.30, 0.24
HSL	20°, 32%, 65%
HSV	20°, 30%, 76%
XYZ	38.4134, 36.6896, 28.3497
YIQ	164.4950, 29.3430, 2.3590

Conversions

Conversions Part 2

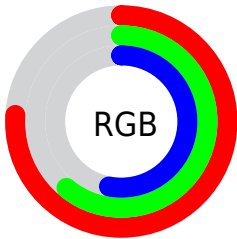
Format	Color
RYB	194, 164, 136
Decimal	12753800
CIELab	67.04, 11.73, 15.47
CIELCh	67, 19.411, 52.832
Yxy	36.6896, 0.3713, 0.3547
Android (android.graphics.Color)	4290943880 (0xFFC29B88)
YUV	164.4950, -14.0480, 25.8759
Hunter-Lab	60.5719, 7.1999, 14.6506

Details

The Decimal color **12753800** is a light color, and the websafe version is hex **CC9999**. A complement of this color would be **8957890**, and the grayscale version is **10855845**.

A 20% lighter version of the original color is **16503229**, and **9136214** is the 20% darker color. If you saturate the color by 10%, you get **12750453**, and if you desaturate by 10%, it is **12757147**.

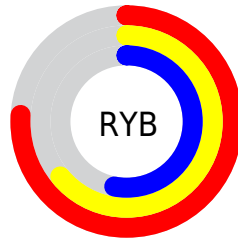
Distribution



Red (76%)

Green (61%)

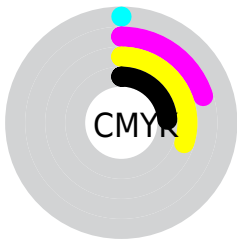
Blue (53%)



Red (76%)

Yellow (64%)

Blue (53%)

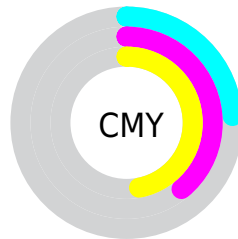


Cyan (0%)

Magenta (20%)

Yellow (30%)

Black (24%)



Cyan (24%)

Magenta (39%)

Yellow (47%)

Brightness & Saturation Gradients

These gradients show how the Decimal color 12753800 changes by changing the brightness by 10 percent. The first figure shows a shift by +10% for each color and the second figure -10%.

Similar to the brightness gradients but the following saturation gradients show a change of the Decimal color 12753800 by changing the saturation by 10% instead.

 12753800

 12753800

16777215

 10912111

 16503229

 9136214

 16772825

 7426111

 16777206

 5781801

 4137748

 2690560

 0

 12753800

 12753800

 12750453

 12757147

 12747105

 12760495

 12743758

 12763842

 12740410

 12767190

 12737063

 12770537

 12733716

 12773884

 12730368

 12777215

 12779519

Harmonies

Analogous

The Analogous color harmony consists of three colors that are next to each other on the color wheel.



13146006



12753800



11903361

Triad

The Triadic color harmony groups three colors that are evenly spaced from another and form a triangle on the color wheel.



12753800



8236446



10592451

Complementary

The Complementary color scheme is a pair of colors which are on the opposite of each other on the color wheel.



12753800



8957890

Split Complementary

Split-complementary colors differ from the complementary color scheme. The scheme consists of three colors, the original color and two neighbors of the complement color.



9086661



12753800



7581104

Square

The Square scheme is like the rectangle color scheme, but the four colors are evenly spaced on the color wheel.



12753800



9350030



7908286



11967416

Rectangle

The Rectangle color scheme consists of four colors that form a rectangle on the color wheel.



12753800



11117697



7908286



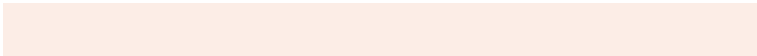
10068677

Sweetspot

The Sweet Spot groups the original color and five complimentary colors.



12753800



16575974



12748976



8418929



0



8421504

Same Dimension

The Same Dimension uses a secret algorithm to generate beautiful new colors.



12753800



16564130



12760968



6380119



10564864



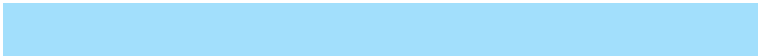
2165504

Inverse Universe

The Inverse Universe completely reimagines the original color for something new.



8957890



10674172



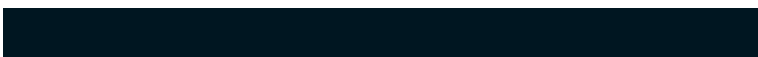
8950722



5725793



27809



5665

Previews

White Background



This preview shows how the Decimal color 12753800 looks on a white background.

Color Contrast Check

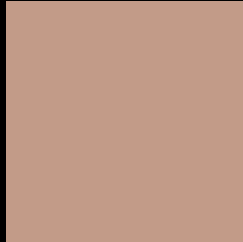
Large Text (above 18pt) WCAG AA × Fail

Any Text WCAG AA × Fail

Large Text (above 18pt) WCAG AAA × Fail

Any Text WCAG AAA × Fail

Black Background



This preview shows how the Decimal color 12753800 looks on a black background.

Color Contrast Check

Large Text (above 18pt) WCAG AA ✓ Pass

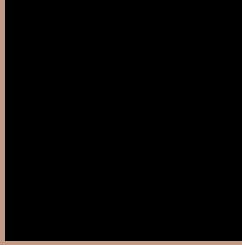
Any Text WCAG AA ✓ Pass

Large Text (above 18pt) WCAG AAA ✓ Pass

Any Text WCAG AAA ✓ Pass

If you want to check with other color combinations, try the [Color Contrast Checker](#).

Decimal 12753800 Background



This preview shows how black text looks on a background with the Decimal color 12753800.



This preview shows how white text looks on a background with the Decimal color 12753800.

Color Blindness Simulation

Color vision deficiency is a very complex topic, and I could not describe the different causes any better than Wikipedia does, so if you want to learn more, you should check out their [article about color blindness](#).

Dichromacy



Original Color
12753800

Protanopia
11314060

Deuteranopia
12426632



Tritanopia
12949411

Trichromacy



Original Color
12753800

Protanomaly
11837579

Deuteranomaly
12557448

Tritanomaly
12884121

Monochromacy



Original Color
12753800

Achromatopsia
10790052

Achromatomaly
11510170

CSS Examples

Text

The CSS property to change the color of the text to Decimal 12753800 is called "color". The color property can be set on classes, ids or directly on the HTML element.

This example shows how text in the color #C29B88 looks like.

```
.text, #text, p{  
    color:#C29B88  
}
```

If you want to add a text shadow in that color use the text-shadow property, you can generate a text shadow directly with our [CSS Text Shadow Generator](#).

Here you see how black text with a 4 pixel #C29B88 colored shadow looks like.

```
.shadow{ text-shadow: 4px 4px 2px #C29B88
}
```

Border

The CSS property to change the border of an element to Decimal 12753800 is called "border". The border property can be set on classes, ids or directly on the HTML element.

This example shows the color as border, it can be applied via the CSS property "border" or "border-color".

```
.border, #border, table{ border:4px solid
#C29B88 }
```

If only the border color should be changed use the property `border-color`.

```
.border{ border-color:#C29B88 }
```

If you want to add a box shadow in that color use:

Here you see how a box with a 4 pixel #C29B88 colored shadow looks like.

```
.boxshadow{ -moz-box-shadow:4px 4px 4px  
4px #C29B88; -webkit-box-shadow:4px 4px  
4px 4px #C29B88; box-shadow:4px 4px 4px  
4px #C29B88 }
```

Background

The CSS property to change the background color of an element to Decimal 12753800 is called "background". The background property can be set on classes, ids or directly on the HTML element.

```
.background, #background, body{  
background:#C29B88 }
```

If only the background color should be changed can be used:

```
.background{ background-color:#C29B88 }
```

This example shows the color as background, it is applied via the CSS property "background".

To optimize and compress your CSS code, you can use our [online CSS compressor and optimizer](#) based on csstidy. If you want to create a linear or radial gradient as background or border, check our [CSS Gradient Generator](#).

Hey! You found this booklet interesting? Support Converting Colors with the new Membership Option!

The pro membership hides all ads, plus gives you double the colors in the color bucket, and more awesome pro features!

[Learn more, Memberships starting at \\$2.50/m!](#)

**Follow me
on Twitter!**

@ConvertingColor