

Converting Colors

Decimal(12754081)

Have a look what the booklet for
Decimal(12754081) contains.

Decimal(12754081)	3
<i>Conversions</i>	4
<i>Details</i>	6
<i>Harmonies</i>	11
<i>Previews</i>	23
<i>Color Blindness Simulation</i>	26
<i>CSS Examples</i>	29

Color

Decimal(12754081)

Conversions

Conversions Part 1

Format	Color
Hex	C29CA1
RGB	194, 156, 161
RGB Percent	76%, 61%, 63%
CMY	0.2392, 0.3882, 0.3686
CMYK	0.00, 0.20, 0.17, 0.24
HSL	352°, 24%, 69%
HSV	352°, 20%, 76%
XYZ	40.5696, 37.8195, 38.8799
YIQ	167.9320, 21.0430, 9.6110

Conversions

Conversions Part 2

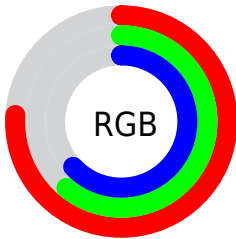
Format	Color
RYB	194, 156, 161
Decimal	12754081
CIELab	67.89, 14.88, 2.74
CIELCh	68, 15.132, 10.446
Yxy	37.8195, 0.3460, 0.3225
Android (android.graphics.Color)	4290944161 (0xFFC29CA1)
YUV	167.9320, -3.4175, 22.8616
Hunter-Lab	61.4975, 10.1349, 5.5641

Details

The Decimal color **12754081** is a light color, and the websafe version is hex **CC9999**. A complement of this color would be **10273469**, and the grayscale version is **11053224**.

A 20% lighter version of the original color is **16503768**, and **9202030** is the 20% darker color. If you saturate the color by 10%, you get **12749200**, and if you desaturate by 10%, it is **12758962**.

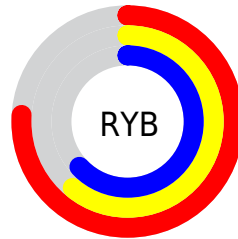
Distribution



Red (76%)

Green (61%)

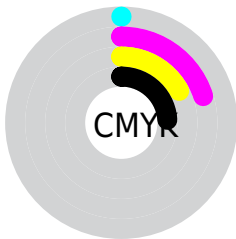
Blue (63%)



Red (76%)

Yellow (61%)

Blue (63%)

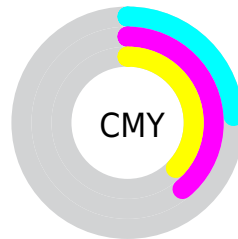


Cyan (0%)

Magenta (20%)

Yellow (17%)

Black (24%)



Cyan (24%)

Magenta (39%)

Yellow (37%)

Brightness & Saturation Gradients

These gradients show how the Decimal color 12754081 changes by changing the brightness by 10 percent. The first figure shows a shift by +10% for each color and the second figure -10%.

Similar to the brightness gradients but the following saturation gradients show a change of the Decimal color 12754081 by changing the saturation by 10% instead.

 12754081

 12754081

16777215

 10977927

 16503768

 9202030

 16773108

 7491669

 5847358

 4268840

 2756372

 917504

 0

 12754081

 12754081

 12749200

 12758962

 12744063

 12764099

 12739182

 12768980

 12734046

 12774116

 12729165

 12778997

 12724284

 12779519

 12719147

 12714266

 12714010

Harmonies

Analogous

The Analogous color harmony consists of three colors that are next to each other on the color wheel.



12295599



12754081



12689044

Triad

The Triadic color harmony groups three colors that are evenly spaced from another and form a triangle on the color wheel.



12754081



10267280



9218495

Complementary

The Complementary color scheme is a pair of colors which are on the opposite of each other on the color wheel.



12754081



10273469

Split Complementary

Split-complementary colors differ from the complementary color scheme. The scheme consists of three colors, the original color and two neighbors of the complement color.



8629431



12754081



9285020

Square

The Square scheme is like the rectangle color scheme, but the four colors are evenly spaced on the color wheel.



12754081



11249291



8629674



10266048

Rectangle

The Rectangle color scheme consists of four colors that form a rectangle on the color wheel.



12754081



12361870



8629674



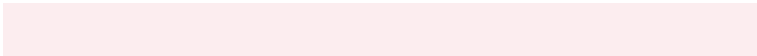
8956605

Sweetspot

The Sweet Spot groups the original color and five complimentary colors.



12754081



16575983



12426434



8419192



0



8421504

Same Dimension

The Same Dimension uses a secret algorithm to generate beautiful new colors.



12754081



16564424



12757660



6379352



10551317



2162692

Inverse Universe

The Inverse Universe completely reimagines the original color for something new.



12754081



16564424



10269890



6379352



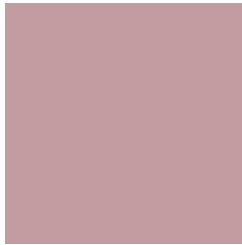
10551317



2162692

Previews

White Background



This preview shows how the Decimal color 12754081 looks on a white background.

Color Contrast Check

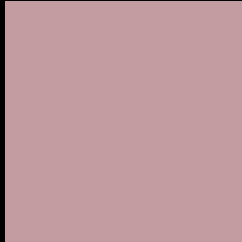
Large Text (above 18pt) WCAG AA × Fail

Any Text WCAG AA × Fail

Large Text (above 18pt) WCAG AAA × Fail

Any Text WCAG AAA × Fail

Black Background



This preview shows how the Decimal color 12754081 looks on a black background.

Color Contrast Check

Large Text (above 18pt) WCAG AA ✓ Pass

Any Text WCAG AA ✓ Pass

Large Text (above 18pt) WCAG AAA ✓ Pass

Any Text WCAG AAA ✓ Pass

If you want to check with other color combinations, try the [Color Contrast Checker](#).

Decimal 12754081 Background



This preview shows how black text looks on a background with the Decimal color 12754081.




This preview shows how white text looks on a background with the Decimal color 12754081.

Color Blindness Simulation

Color vision deficiency is a very complex topic, and I could not describe the different causes any better than Wikipedia does, so if you want to learn more, you should check out their [article about color blindness](#).

Dichromacy





Tritanopia
12819367

Trichromacy



Original Color
12754081

Protanomaly
11641508

Deuteranomaly
12361632

Tritanomaly
12819365

Monochromacy



Original Color
12754081

Achromatopsia
11053224

Achromatomaly
11642021

CSS Examples

Text

The CSS property to change the color of the text to Decimal 12754081 is called "color". The color property can be set on classes, ids or directly on the HTML element.

This example shows how text in the color #C29CA1 looks like.

```
.text, #text, p{  
    color:#C29CA1  
}
```

If you want to add a text shadow in that color use the text-shadow property, you can generate a text shadow directly with our [CSS Text Shadow Generator](#).

Here you see how black text with a 4 pixel #C29CA1 colored shadow looks like.

```
.shadow{ text-shadow: 4px 4px 2px #C29CA1
}
```

Border

The CSS property to change the border of an element to Decimal 12754081 is called "border". The border property can be set on classes, ids or directly on the HTML element.

This example shows the color as border, it can be applied via the CSS property "border" or "border-color".

```
.border, #border, table{ border:4px solid
#C29CA1 }
```

If only the border color should be changed use the property `border-color`.

```
.border{ border-color:#C29CA1 }
```

If you want to add a box shadow in that color use:

Here you see how a box with a 4 pixel #C29CA1 colored shadow looks like.

```
.boxshadow{ -moz-box-shadow:4px 4px 4px  
4px #C29CA1; -webkit-box-shadow:4px 4px  
4px 4px #C29CA1; box-shadow:4px 4px 4px  
4px #C29CA1 }
```

Background

The CSS property to change the background color of an element to Decimal 12754081 is called "background". The background property can be set on classes, ids or directly on the HTML element.

```
.background, #background, body{  
background:#C29CA1 }
```

If only the background color should be changed can be used:

```
.background{ background-color:#C29CA1 }
```

This example shows the color as background, it is applied via the CSS property "background".

To optimize and compress your CSS code, you can use our [online CSS compressor and optimizer](#) based on csstidy. If you want to create a linear or radial gradient as background or border, check our [CSS Gradient Generator](#).

Hey! You found this booklet interesting? Support Converting Colors with the new Membership Option!

The pro membership hides all ads, plus gives you double the colors in the color bucket, and more awesome pro features!

[Learn more, Memberships starting at \\$2.50/m!](#)

**Follow me
on Twitter!**

@ConvertingColor