

Converting Colors

Decimal(12755364)

Have a look what the booklet for
Decimal(12755364) contains.

Decimal(12755364)	3
<i>Conversions</i>	4
<i>Details</i>	6
<i>Harmonies</i>	11
<i>Previews</i>	23
<i>Color Blindness Simulation</i>	26
<i>CSS Examples</i>	29

Color

Decimal(12755364)

Conversions

Conversions Part 1

Format	Color
Hex	C2A1A4
RGB	194, 161, 164
RGB Percent	76%, 63%, 64%
CMY	0.2392, 0.3686, 0.3569
CMYK	0.00, 0.17, 0.15, 0.24
HSL	355°, 21%, 70%
HSV	355°, 17%, 76%
XYZ	41.6938, 39.6394, 40.5756
YIQ	171.2090, 18.7050, 7.9290

Conversions

Conversions Part 2

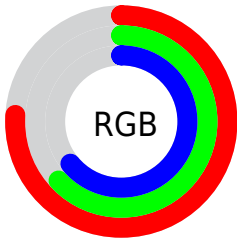
Format	Color
RYB	194, 161, 164
Decimal	12755364
CIELab	69.21, 12.62, 2.99
CIELCh	69, 12.968, 13.347
Yxy	39.6394, 0.3420, 0.3252
Android (android.graphics.Color)	4290945444 (0xFFC2A1A4)
YUV	171.2090, -3.5540, 19.9877
Hunter-Lab	62.9598, 8.0282, 5.8614

Details

The Decimal color **12755364** is a light color, and the websafe version is hex **CC9999**. A complement of this color would be **10601151**, and the grayscale version is **11250603**.

A 20% lighter version of the original color is **16505051**, and **9203056** is the 20% darker color. If you saturate the color by 10%, you get **12750482**, and if you desaturate by 10%, it is **12760246**.

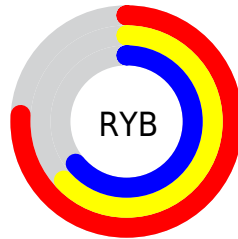
Distribution



Red (76%)

Green (63%)

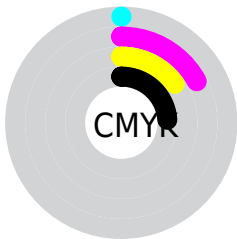
Blue (64%)



Red (76%)

Yellow (63%)

Blue (64%)

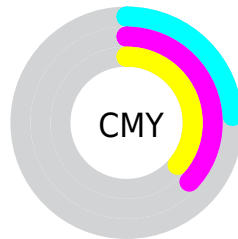


Cyan (0%)

Magenta (17%)

Yellow (15%)

Black (24%)



Cyan (24%)

Magenta (37%)

Yellow (36%)

Brightness & Saturation Gradients

These gradients show how the Decimal color 12755364 changes by changing the brightness by 10 percent. The first figure shows a shift by +10% for each color and the second figure -10%.

Similar to the brightness gradients but the following saturation gradients show a change of the Decimal color 12755364 by changing the saturation by 10% instead.

 12755364

 12755364

16777215

 10979210

 16505051

 9203056

 16774391

 7492952

 5848641

 4270123

 2822934

 1376256

 0

 12755364

 12755364

 12750482

 12760246

 12745345

 12765383

 12740463

 12770265

 12735325

 12775403

 12730444

 12779516

 12725562

 12779519

 12720425

 12715543

 12714002

Harmonies

Analogous

The Analogous color harmony consists of three colors that are next to each other on the color wheel.



12427952



12755364



12624793

Triad

The Triadic color harmony groups three colors that are evenly spaced from another and form a triangle on the color wheel.



12755364



10464664



9809087

Complementary

The Complementary color scheme is a pair of colors which are on the opposite of each other on the color wheel.



12755364



10601151

Split Complementary

Split-complementary colors differ from the complementary color scheme. The scheme consists of three colors, the original color and two neighbors of the complement color.



9220025



12755364



9678754

Square

The Square scheme is like the rectangle color scheme, but the four colors are evenly spaced on the color wheel.



12755364



11381394



9220270



10725568

Rectangle

The Rectangle color scheme consists of four colors that form a rectangle on the color wheel.



12755364



12363156



9220270



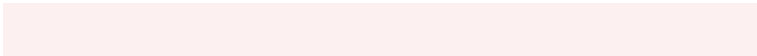
9547198

Sweetspot

The Sweet Spot groups the original color and five complimentary colors.



12755364



16576753



12558786



8419449



0



8421504

Same Dimension

The Same Dimension uses a secret algorithm to generate beautiful new colors.



12755364



16566991



12758689



6379352



10551311



2162691

Inverse Universe

The Inverse Universe completely reimagines the original color for something new.



12755364



16566991



10597826



6379352



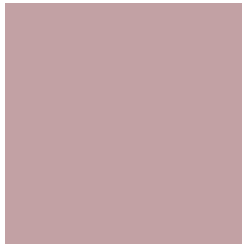
10551311



2162691

Previews

White Background



This preview shows how the Decimal color 12755364 looks on a white background.

Color Contrast Check

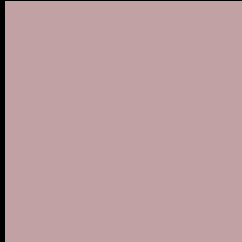
Large Text (above 18pt) WCAG AA × Fail

Any Text WCAG AA × Fail

Large Text (above 18pt) WCAG AAA × Fail

Any Text WCAG AAA × Fail

Black Background



This preview shows how the Decimal color 12755364 looks on a black background.

Color Contrast Check

Large Text (above 18pt) WCAG AA ✓ Pass

Any Text WCAG AA ✓ Pass

Large Text (above 18pt) WCAG AAA ✓ Pass

Any Text WCAG AAA ✓ Pass

If you want to check with other color combinations, try the [Color Contrast Checker](#).

Decimal 12755364 Background



This preview shows how black text looks on a background with the Decimal color 12755364.



This preview shows how white text looks on a background with the Decimal color 12755364.

Color Blindness Simulation

Color vision deficiency is a very complex topic, and I could not describe the different causes any better than Wikipedia does, so if you want to learn more, you should check out their [article about color blindness](#).

Dichromacy



Original Color
12755364

Protanopia
11315368

Deuteranopia
12362916



Tritanopia
12820652

Trichromacy



Original Color
12755364

Protanomaly
11838887

Deuteranomaly
12493732

Tritanomaly
12820649

Monochromacy



Original Color
12755364

Achromatopsia
11250603

Achromatomaly
11773864

CSS Examples

Text

The CSS property to change the color of the text to Decimal 12755364 is called "color". The color property can be set on classes, ids or directly on the HTML element.

This example shows how text in the color #C2A1A4 looks like.

```
.text, #text, p{  
  color:#C2A1A4  
}
```

If you want to add a text shadow in that color use the text-shadow property, you can generate a text shadow directly with our [CSS Text Shadow Generator](#).

Here you see how black text with a 4 pixel #C2A1A4 colored shadow looks like.

```
.shadow{ text-shadow: 4px 4px 2px #C2A1A4
}
```

Border

The CSS property to change the border of an element to Decimal 12755364 is called "border". The border property can be set on classes, ids or directly on the HTML element.

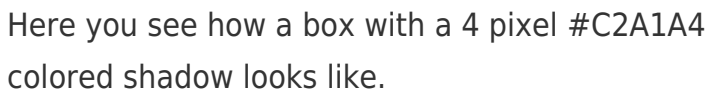
This example shows the color as border, it can be applied via the CSS property "border" or "border-color".

```
.border, #border, table{ border:4px solid
#C2A1A4 }
```

If only the border color should be changed use the property `border-color`.

```
.border{ border-color:#C2A1A4 }
```

If you want to add a box shadow in that color use:



Here you see how a box with a 4 pixel #C2A1A4 colored shadow looks like.

```
.boxshadow{ -moz-box-shadow:4px 4px 4px  
4px #C2A1A4; -webkit-box-shadow:4px 4px  
4px 4px #C2A1A4; box-shadow:4px 4px 4px  
4px #C2A1A4 }
```

Background

The CSS property to change the background color of an element to Decimal 12755364 is called "background". The background property can be set on classes, ids or directly on the HTML element.

```
.background, #background, body{  
background:#C2A1A4 }
```

If only the background color should be changed can be used:

```
.background{ background-color:#C2A1A4 }
```

This example shows the color as background, it is applied via the CSS property "background".

To optimize and compress your CSS code, you can use our [online CSS compressor and optimizer](#) based on csstidy. If you want to create a linear or radial gradient as background or border, check our [CSS Gradient Generator](#).

Hey! You found this booklet interesting? Support Converting Colors with the new Membership Option!

The pro membership hides all ads, plus gives you double the colors in the color bucket, and more awesome pro features!

[Learn more, Memberships starting at \\$2.50/m!](#)

**Follow me
on Twitter!**

@ConvertingColor