

# Converting Colors

Decimal(12755594)

Have a look what the booklet for  
Decimal(12755594) contains.

<b>Decimal(12755594)</b> .....	3
<i><b>Conversions</b></i> .....	4
<i><b>Details</b></i> .....	6
<i><b>Harmonies</b></i> .....	11
<i><b>Previews</b></i> .....	23
<i><b>Color Blindness Simulation</b></i> .....	26
<i><b>CSS Examples</b></i> .....	29

# **Color**

**Decimal(12755594)**

# Conversions

## Conversions Part 1

Format	Color
Hex	C2A28A
RGB	194, 162, 138
RGB Percent	76%, 64%, 54%
CMY	0.2392, 0.3647, 0.4588
CMYK	0.00, 0.16, 0.29, 0.24
HSL	26°, 31%, 65%
HSV	26°, 29%, 76%
XYZ	39.7559, 39.1450, 29.5051
YIQ	168.8320, 26.7760, -0.6800

# Conversions

## Conversions Part 2

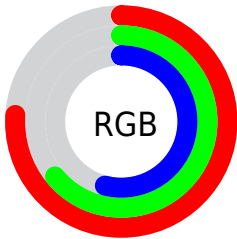
<b>Format</b>	<b>Color</b>
<a href="#">RYB</a>	<a href="#">194, 180, 138</a>
Decimal	<a href="#">12755594</a>
CIELab	<a href="#">68.86, 8.17, 16.88</a>
CIElCh	<a href="#">69, 18.755, 64.171</a>
Yxy	<a href="#">39.1450, 0.3667, 0.3611</a>
Android (android.graphics.Color)	<a href="#">4290945674 (0xFFC2A28A)</a>
YUV	<a href="#">168.8320, -15.2002, 22.0723</a>
Hunter-Lab	<a href="#">62.5659, 3.9328, 15.8359</a>

# Details

The Decimal color **12755594** is a light color, and the websafe version is hex **CC9999**. A complement of this color would be **9087682**, and the grayscale version is **11119017**.

A 20% lighter version of the original color is **16505280**, and **9137752** is the 20% darker color. If you saturate the color by 10%, you get **12752759**, and if you desaturate by 10%, it is **12758429**.

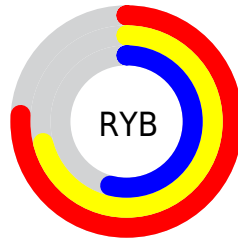
# Distribution



Red (76%)

Green (64%)

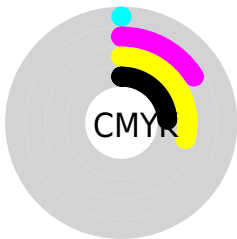
Blue (54%)



Red (76%)

Yellow (71%)

Blue (54%)

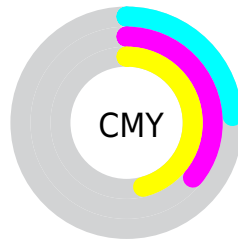


Cyan (0%)

Magenta (16%)

Yellow (29%)

Black (24%)



Cyan (24%)

Magenta (36%)

Yellow (46%)

# Brightness & Saturation Gradients

These gradients show how the Decimal color 12755594 changes by changing the brightness by 10 percent. The first figure shows a shift by +10% for each color and the second figure -10%.

Similar to the brightness gradients but the following saturation gradients show a change of the Decimal color 12755594 by changing the saturation by 10% instead.



 12755594

 12755594

16777215

 10913905

 16505280

 9137752

 16774619

 7427649

 16777208

 5783338

 4204822

 2692096

 524288

 0

 12755594

 12755594

 12752759

 12758429

 12749923

 12761265

 12747088

 12764100

 12744252

 12766936

 12741417

 12769771

 12738326

 12772862

 12735490

 12775679

 12735232

 12778495

 12779519

# Harmonies

## Analogous

The Analogous color harmony consists of three colors that are next to each other on the color wheel.



13344406



12755594



11774086

# Triad

The Triadic color harmony groups three colors that are evenly spaced from another and form a triangle on the color wheel.



12755594



8303274



11445188

# Complementary

The Complementary color scheme is a pair of colors which are on the opposite of each other on the color wheel.



12755594



9087682

# Split Complementary

Split-complementary colors differ from the complementary color scheme. The scheme consists of three colors, the original color and two neighbors of the complement color.



10004938



12755594



8040890

# Square

The Square scheme is like the rectangle color scheme, but the four colors are evenly spaced on the color wheel.



12755594



9285785



8695494



12623543

# Rectangle

The Rectangle color scheme consists of four colors that form a rectangle on the color wheel.



12755594



10922889



8695494



10986951

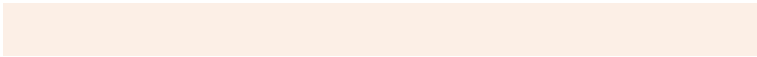


# Sweetspot

The Sweet Spot groups the original color and five complimentary colors.



12755594



16576486



12749483



8419185



0



8421504



# Same Dimension

The Same Dimension uses a secret algorithm to generate beautiful new colors.



12755594



16566948



12762506



6380375



10568960



2166272

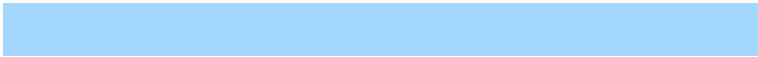


# Inverse Universe

The Inverse Universe completely reimagines the original color for something new.



9087682



10803196



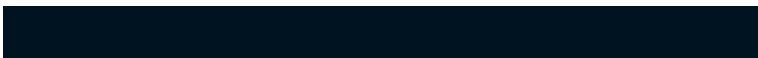
9080770



5725537



23713



4897



# Previews

## White Background



This preview shows how the Decimal color 12755594 looks on a white background.

## Color Contrast Check

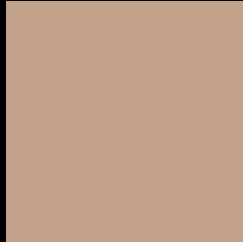
Large Text (above 18pt) WCAG AA × Fail

Any Text WCAG AA × Fail

Large Text (above 18pt) WCAG AAA × Fail

Any Text WCAG AAA × Fail

# Black Background



This preview shows how the Decimal color 12755594 looks on a black background.

## Color Contrast Check

Large Text (above 18pt) WCAG AA ✓ Pass

Any Text WCAG AA ✓ Pass

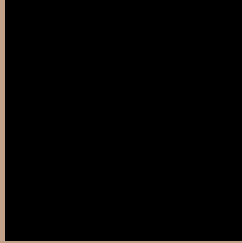
Large Text (above 18pt) WCAG AAA ✓ Pass

Any Text WCAG AAA ✓ Pass

If you want to check with other color combinations, try the [Color Contrast Checker](#).



## Decimal 12755594 Background



This preview shows how black text looks on a background with the Decimal color 12755594.



This preview shows how white text looks on a background with the Decimal color 12755594.

# Color Blindness Simulation

Color vision deficiency is a very complex topic, and I could not describe the different causes any better than Wikipedia does, so if you want to learn more, you should check out their [article about color blindness](#).


## Dichromacy



**Original Color**  
12755594

**Protanopia**  
11643021

**Deuteranopia**  
12821130



**Tritanopia**  
13016746

# Trichromacy



**Original Color**  
12755594

**Protanomaly**  
12035724

**Deuteranomaly**  
12821130

**Tritanomaly**  
12951454

# Monochromacy



**Original Color**  
12755594

**Achromatopsia**  
11119017

**Achromatomaly**  
11708062

# CSS Examples

## Text

The CSS property to change the color of the text to Decimal 12755594 is called "color". The color property can be set on classes, ids or directly on the HTML element.

This example shows how text in the color #C2A28A looks like.

```
.text, #text, p{  
    color:#C2A28A  
}
```

If you want to add a text shadow in that color use the text-shadow property, you can generate a text shadow directly with our [CSS Text Shadow Generator](#).

Here you see how black text with a 4 pixel #C2A28A colored shadow looks like.

```
.shadow{ text-shadow: 4px 4px 2px #C2A28A
}
```

## Border

The CSS property to change the border of an element to Decimal 12755594 is called "border". The border property can be set on classes, ids or directly on the HTML element.

This example shows the color as border, it can be applied via the CSS property "border" or "border-color".

```
.border, #border, table{ border:4px solid
#C2A28A }
```

If only the border color should be changed use the property `border-color`.

```
.border{ border-color:#C2A28A }
```

If you want to add a box shadow in that color use:

Here you see how a box with a 4 pixel #C2A28A colored shadow looks like.

```
.boxshadow{ -moz-box-shadow:4px 4px 4px  
4px #C2A28A; -webkit-box-shadow:4px 4px  
4px 4px #C2A28A; box-shadow:4px 4px 4px  
4px #C2A28A }
```

# Background

The CSS property to change the background color of an element to Decimal 12755594 is called "background". The background property can be set on classes, ids or directly on the HTML element.

```
.background, #background, body{  
background:#C2A28A }
```

If only the background color should be changed can be used:

```
.background{ background-color:#C2A28A }
```

This example shows the color as background, it is applied via the CSS property "background".

To optimize and compress your CSS code, you can use our [online CSS compressor and optimizer](#) based on csstidy. If you want to create a linear or radial gradient as background or border, check our [CSS Gradient Generator](#).



Hey! You found this booklet interesting? Support Converting Colors with the new Membership Option!

The pro membership hides all ads, plus gives you double the colors in the color bucket, and more awesome pro features!

**[Learn more, Memberships starting at \\$2.50/m!](#)**

**Follow me  
on Twitter!**

@ConvertingColor