

# Converting Colors

Decimal(12756885)

Have a look what the booklet for  
Decimal(12756885) contains.

<b>Decimal(12756885)</b> .....	3
<i><b>Conversions</b></i> .....	4
<i><b>Details</b></i> .....	6
<i><b>Harmonies</b></i> .....	11
<i><b>Previews</b></i> .....	23
<i><b>Color Blindness Simulation</b></i> .....	26
<i><b>CSS Examples</b></i> .....	29

# **Color**

**Decimal(12756885)**

# Conversions

## Conversions Part 1

Format	Color
Hex	C2A795
RGB	194, 167, 149
RGB Percent	76%, 65%, 58%
CMY	0.2392, 0.3451, 0.4157
CMYK	0.00, 0.14, 0.23, 0.24
HSL	24°, 27%, 67%
HSV	24°, 23%, 76%
XYZ	41.4917, 41.2767, 34.2141
YIQ	173.0210, 21.8700, 0.1260

# Conversions

## Conversions Part 2

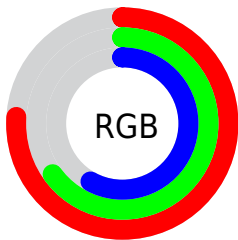
Format	Color
<a href="#">RYB</a>	<a href="#">194, 179, 149</a>
Decimal	<a href="#">12756885</a>
CIELab	<a href="#">70.37, 7.01, 12.94</a>
CIElCh	<a href="#">70, 14.720, 61.545</a>
Yxy	<a href="#">41.2767, 0.3547, 0.3528</a>
Android (android.graphics.Color)	<a href="#">4290946965 (0xFFC2A795)</a>
YUV	<a href="#">173.0210, -11.8424, 18.3986</a>
Hunter-Lab	<a href="#">64.2469, 2.8459, 13.3985</a>

# Details

The Decimal color **12756885** is a light color, and the websafe version is hex **CC9999**. A complement of this color would be **9810114**, and the grayscale version is **11382189**.

A 20% lighter version of the original color is **16506571**, and **9204578** is the 20% darker color. If you saturate the color by 10%, you get **12753794**, and if you desaturate by 10%, it is **12759976**.

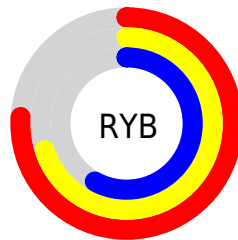
# Distribution



Red (76%)

Green (65%)

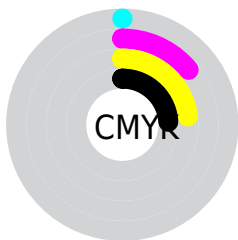
Blue (58%)



Red (76%)

Yellow (70%)

Blue (58%)

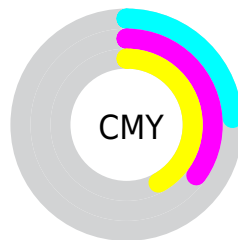


Cyan (0%)

Magenta (14%)

Yellow (23%)

Black (24%)



Cyan (24%)

Magenta (35%)

Yellow (42%)

# Brightness & Saturation Gradients

These gradients show how the Decimal color 12756885 changes by changing the brightness by 10 percent. The first figure shows a shift by +10% for each color and the second figure -10%.

Similar to the brightness gradients but the following saturation gradients show a change of the Decimal color 12756885 by changing the saturation by 10% instead.



 12756885

 12756885

16777215

 10980731

 16506571

 9204578

 16776167

 7494474

 5849908

 4271390

 2758663

 1179648

 0

 12756885

 12756885

 12753794

 12759976

 12750958

 12762812

 12747867

 12765903

 12744775

 12768995

 12741940

 12771830

 12738849

 12774911

 12736013

 12777727

 12733952

 12779519

# Harmonies

## Analogous

The Analogous color harmony consists of three colors that are next to each other on the color wheel.



13149343



12756885



11971473

# Triad

The Triadic color harmony groups three colors that are evenly spaced from another and form a triangle on the color wheel.



12756885



9286828



11577539

# Complementary

The Complementary color scheme is a pair of colors which are on the opposite of each other on the color wheel.



12756885



9810114

# Split Complementary

Split-complementary colors differ from the complementary color scheme. The scheme consists of three colors, the original color and two neighbors of the complement color.



10399175



12756885



9024442

# Square

The Square scheme is like the rectangle color scheme, but the four colors are evenly spaced on the color wheel.



12756885



10007455



9482691



12494265

# Rectangle

The Rectangle color scheme consists of four colors that form a rectangle on the color wheel.



12756885



11316883



9482691



11184837

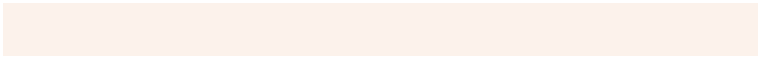


# Sweetspot

The Sweet Spot groups the original color and five complimentary colors.



12756885



16577259



12752304



8419701



0



8421504



# Same Dimension

The Same Dimension uses a secret algorithm to generate beautiful new colors.



12756885



16569014



12762517



6380375



10567680



2166016

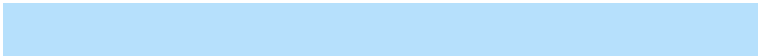


# Inverse Universe

The Inverse Universe completely reimagines the original color for something new.



9810114



11985148



9804482



5725537



24737



5153



# Previews

## White Background



This preview shows how the Decimal color 12756885 looks on a white background.

## Color Contrast Check

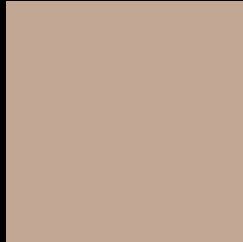
Large Text (above 18pt) WCAG AA × Fail

Any Text WCAG AA × Fail

Large Text (above 18pt) WCAG AAA × Fail

Any Text WCAG AAA × Fail

# Black Background



This preview shows how the Decimal color 12756885 looks on a black background.

## Color Contrast Check

Large Text (above 18pt) WCAG AA ✓ Pass

Any Text WCAG AA ✓ Pass

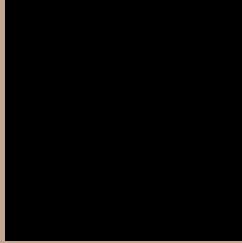
Large Text (above 18pt) WCAG AAA ✓ Pass

Any Text WCAG AAA ✓ Pass

If you want to check with other color combinations, try the [Color Contrast Checker](#).



## Decimal 12756885 Background



This preview shows how black text looks on a background with the Decimal color 12756885.




This preview shows how white text looks on a background with the Decimal color 12756885.

# Color Blindness Simulation

Color vision deficiency is a very complex topic, and I could not describe the different causes any better than Wikipedia does, so if you want to learn more, you should check out their [article about color blindness](#).

## Dichromacy





**Tritanopia**  
12952496

# Trichromacy



**Original Color**  
12756885

**Protanomaly**  
12167830

**Deuteranomaly**  
12887701

**Tritanomaly**  
12887206

# Monochromacy



**Original Color**  
12756885

**Achromatopsia**  
11382189

**Achromatomaly**  
11905956

# CSS Examples

## Text

The CSS property to change the color of the text to Decimal 12756885 is called "color". The color property can be set on classes, ids or directly on the HTML element.

This example shows how text in the color #C2A795 looks like.

```
.text, #text, p{  
    color:#C2A795  
}
```

If you want to add a text shadow in that color use the text-shadow property, you can generate a text shadow directly with our [CSS Text Shadow Generator](#).

Here you see how black text with a 4 pixel #C2A795 colored shadow looks like.

```
.shadow{ text-shadow: 4px 4px 2px #C2A795
}
```

## Border

The CSS property to change the border of an element to Decimal 12756885 is called "border". The border property can be set on classes, ids or directly on the HTML element.

This example shows the color as border, it can be applied via the CSS property "border" or "border-color".

```
.border, #border, table{ border:4px solid
#C2A795 }
```

If only the border color should be changed use the property `border-color`.

```
.border{ border-color:#C2A795 }
```

If you want to add a box shadow in that color use:

Here you see how a box with a 4 pixel #C2A795 colored shadow looks like.

```
.boxshadow{ -moz-box-shadow:4px 4px 4px  
4px #C2A795; -webkit-box-shadow:4px 4px  
4px 4px #C2A795; box-shadow:4px 4px 4px  
4px #C2A795 }
```

# Background

The CSS property to change the background color of an element to Decimal 12756885 is called "background". The background property can be set on classes, ids or directly on the HTML element.

```
.background, #background, body{  
background:#C2A795 }
```

If only the background color should be changed can be used:

```
.background{ background-color:#C2A795 }
```

This example shows the color as background, it is applied via the CSS property "background".

To optimize and compress your CSS code, you can use our [online CSS compressor and optimizer](#) based on csstidy. If you want to create a linear or radial gradient as background or border, check our [CSS Gradient Generator](#).



Hey! You found this booklet interesting? Support Converting Colors with the new Membership Option!

The pro membership hides all ads, plus gives you double the colors in the color bucket, and more awesome pro features!

**[Learn more, Memberships starting at \\$2.50/m!](#)**

**Follow me  
on Twitter!**

@ConvertingColor