

Converting Colors

Decimal(12757142)

Have a look what the booklet for
Decimal(12757142) contains.

Decimal(12757142)	3
<i>Conversions</i>	4
<i>Details</i>	6
<i>Harmonies</i>	11
<i>Previews</i>	23
<i>Color Blindness Simulation</i>	26
<i>CSS Examples</i>	29

Color

Decimal(12757142)

Conversions

Conversions Part 1

Format	Color
Hex	C2A896
RGB	194, 168, 150
RGB Percent	76%, 66%, 59%
CMY	0.2392, 0.3412, 0.4118
CMYK	0.00, 0.13, 0.23, 0.24
HSL	25°, 27%, 67%
HSV	25°, 23%, 76%
XYZ	41.7558, 41.6766, 34.6978
YIQ	173.7220, 21.2740, -0.0860

Conversions

Conversions Part 2

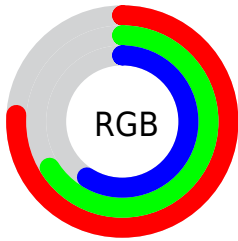
Format	Color
RYB	194, 180, 150
Decimal	12757142
CIELab	70.65, 6.62, 12.78
CIElCh	71, 14.395, 62.629
Yxy	41.6766, 0.3535, 0.3528
Android (android.graphics.Color)	4290947222 (0xFFC2A896)
YUV	173.7220, -11.6949, 17.7838
Hunter-Lab	64.5574, 2.4784, 13.3235

Details

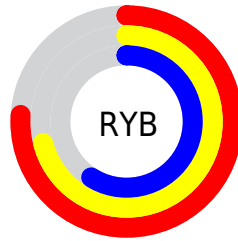
The Decimal color **12757142** is a light color, and the websafe version is hex **CC9999**. A complement of this color would be **9875650**, and the grayscale version is **11447982**.

A 20% lighter version of the original color is **16506828**, and **9204835** is the 20% darker color. If you saturate the color by 10%, you get **12754307**, and if you desaturate by 10%, it is **12759977**.

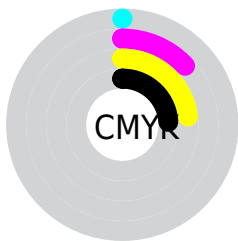
Distribution



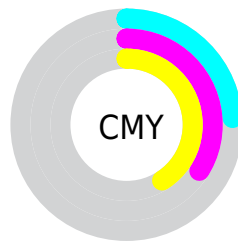
- Red (76%)
- Green (66%)
- Blue (59%)



- Red (76%)
- Yellow (71%)
- Blue (59%)



- Cyan (0%)
- Magenta (13%)
- Yellow (23%)
- Black (24%)



- Cyan (24%)
- Magenta (34%)
- Yellow (41%)

Brightness & Saturation Gradients

These gradients show how the Decimal color 12757142 changes by changing the brightness by 10 percent. The first figure shows a shift by +10% for each color and the second figure -10%.

Similar to the brightness gradients but the following saturation gradients show a change of the Decimal color 12757142 by changing the saturation by 10% instead.

 12757142

 12757142

16777215

 10980988

 16506828

 9204835

 16776424

 7494475

 5850165

 4271647

 2758920

 1245184

 0

 12757142

 12757142

 12754307

 12759977

 12751215

 12763069

 12748380

 12765904

 12745288

 12768996

 12742453

 12771831

 12739362

 12774911

 12736526

 12777727

 12734208

 12779519

Harmonies

Analogous

The Analogous color harmony consists of three colors that are next to each other on the color wheel.



13149599



12757142



11971731

Triad

The Triadic color harmony groups three colors that are evenly spaced from another and form a triangle on the color wheel.



12757142



9352622



11643331

Complementary

The Complementary color scheme is a pair of colors which are on the opposite of each other on the color wheel.



12757142



9875650

Split Complementary

Split-complementary colors differ from the complementary color scheme. The scheme consists of three colors, the original color and two neighbors of the complement color.



10530503



12757142



9155770

Square

The Square scheme is like the rectangle color scheme, but the four colors are evenly spaced on the color wheel.



12757142



10072992



9613764



12559801

Rectangle

The Rectangle color scheme consists of four colors that form a rectangle on the color wheel.



12757142



11382677



9613764



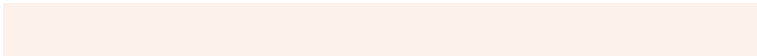
11250629

Sweetspot

The Sweet Spot groups the original color and five complimentary colors.



12757142



16577259



12752560



8419701



0



8421504

Same Dimension

The Same Dimension uses a secret algorithm to generate beautiful new colors.



12757142



16569528



12762774



6380375



10568192



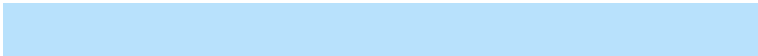
2166272

Inverse Universe

The Inverse Universe completely reimagines the original color for something new.



9875650



12116476



9870018



5725537



24481



5153

Previews

White Background



This preview shows how the Decimal color 12757142 looks on a white background.

Color Contrast Check

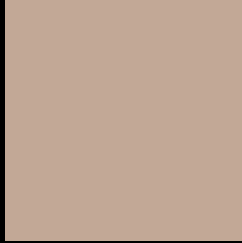
Large Text (above 18pt) WCAG AA × Fail

Any Text WCAG AA × Fail

Large Text (above 18pt) WCAG AAA × Fail

Any Text WCAG AAA × Fail

Black Background



This preview shows how the Decimal color 12757142 looks on a black background.

Color Contrast Check

Large Text (above 18pt) WCAG AA ✓ Pass

Any Text WCAG AA ✓ Pass

Large Text (above 18pt) WCAG AAA ✓ Pass

Any Text WCAG AAA ✓ Pass

If you want to check with other color combinations, try the [Color Contrast Checker](#).

Decimal 12757142 Background



This preview shows how black text looks on a background with the Decimal color 12757142.



This preview shows how white text looks on a background with the Decimal color 12757142.

Color Blindness Simulation

Color vision deficiency is a very complex topic, and I could not describe the different causes any better than Wikipedia does, so if you want to learn more, you should check out their [article about color blindness](#).


Dichromacy



Original Color
12757142

Protanopia
11906200

Deuteranopia
13019030



Tritanopia
12952753

Trichromacy



Original Color
12757142

Protanomaly
12233623

Deuteranomaly
12953494

Tritanomaly
12887463

Monochromacy



Original Color
12757142

Achromatopsia
11447982

Achromatomaly
11906213

CSS Examples

Text

The CSS property to change the color of the text to Decimal 12757142 is called "color". The color property can be set on classes, ids or directly on the HTML element.

This example shows how text in the color #C2A896 looks like.

```
.text, #text, p{  
  color:#C2A896  
}
```

If you want to add a text shadow in that color use the text-shadow property, you can generate a text shadow directly with our [CSS Text Shadow Generator](#).

Here you see how black text with a 4 pixel #C2A896 colored shadow looks like.

```
.shadow{ text-shadow: 4px 4px 2px #C2A896
}
```

Border

The CSS property to change the border of an element to Decimal 12757142 is called "border". The border property can be set on classes, ids or directly on the HTML element.

This example shows the color as border, it can be applied via the CSS property "border" or "border-color".

```
.border, #border, table{ border:4px solid
#C2A896 }
```

If only the border color should be changed use the property `border-color`.

```
.border{ border-color:#C2A896 }
```

If you want to add a box shadow in that color use:

Here you see how a box with a 4 pixel #C2A896 colored shadow looks like.

```
.boxshadow{ -moz-box-shadow:4px 4px 4px  
4px #C2A896; -webkit-box-shadow:4px 4px  
4px 4px #C2A896; box-shadow:4px 4px 4px  
4px #C2A896 }
```

Background

The CSS property to change the background color of an element to Decimal 12757142 is called "background". The background property can be set on classes, ids or directly on the HTML element.

```
.background, #background, body{  
background:#C2A896 }
```

If only the background color should be changed can be used:

```
.background{ background-color:#C2A896 }
```

This example shows the color as background, it is applied via the CSS property "background".

To optimize and compress your CSS code, you can use our [online CSS compressor and optimizer](#) based on csstidy. If you want to create a linear or radial gradient as background or border, check our [CSS Gradient Generator](#).

Hey! You found this booklet interesting? Support Converting Colors with the new Membership Option!

The pro membership hides all ads, plus gives you double the colors in the color bucket, and more awesome pro features!

[Learn more, Memberships starting at \\$2.50/m!](#)

**Follow me
on Twitter!**

@ConvertingColor