

# Converting Colors

Decimal(12757394)

Have a look what the booklet for  
Decimal(12757394) contains.

<b>Decimal(12757394)</b> .....	3
<i><b>Conversions</b></i> .....	4
<i><b>Details</b></i> .....	6
<i><b>Harmonies</b></i> .....	11
<i><b>Previews</b></i> .....	23
<i><b>Color Blindness Simulation</b></i> .....	26
<i><b>CSS Examples</b></i> .....	29

# **Color**

**Decimal(12757394)**

# Conversions

## Conversions Part 1

Format	Color
Hex	C2A992
RGB	194, 169, 146
RGB Percent	76%, 66%, 57%
CMY	0.2392, 0.3373, 0.4275
CMYK	0.00, 0.13, 0.25, 0.24
HSL	29°, 28%, 67%
HSV	29°, 25%, 76%
XYZ	41.6244, 41.9206, 33.0918
YIQ	173.8530, 22.2830, -1.8530

# Conversions

## Conversions Part 2

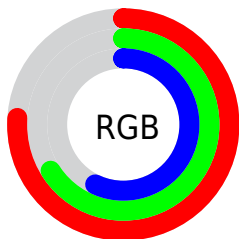
<b>Format</b>	<b>Color</b>
<b>RYB</b>	194, 190, 146
Decimal	12757394
CIELab	70.82, 5.49, 15.22
CIElCh	71, 16.176, 70.154
Yxy	41.9206, 0.3569, 0.3594
Android (android.graphics.Color)	4290947474 (0xFFC2A992)
YUV	173.8530, -13.7315, 17.6689
Hunter-Lab	64.7461, 1.4496, 15.0191

# Details

The Decimal color **12757394** is a light color, and the websafe version is hex **CC9999**. A complement of this color would be **9612226**, and the grayscale version is **11447982**.

A 20% lighter version of the original color is **16507080**, and **9205087** is the 20% darker color. If you saturate the color by 10%, you get **12754815**, and if you desaturate by 10%, it is **12759973**.

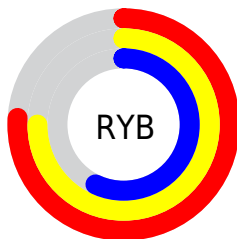
# Distribution



Red (76%)

Green (66%)

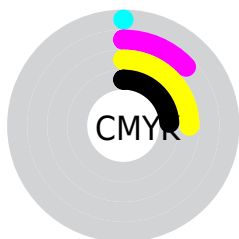
Blue (57%)



Red (76%)

Yellow (75%)

Blue (57%)

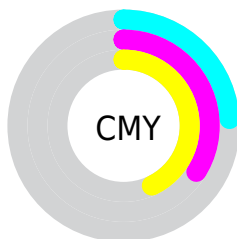


Cyan (0%)

Magenta (13%)

Yellow (25%)

Black (24%)



Cyan (24%)

Magenta (34%)

Yellow (43%)

# Brightness & Saturation Gradients

These gradients show how the Decimal color 12757394 changes by changing the brightness by 10 percent. The first figure shows a shift by +10% for each color and the second figure -10%.

Similar to the brightness gradients but the following saturation gradients show a change of the Decimal color 12757394 by changing the saturation by 10% instead.



 12757394

 12757394

16777215

 10981240

 16507080

 9205087

 16776676

 7494728

 5850417

 4271900

 2759171

 1114112

 0

 12757394

 12757394

 12754815

 12759973

 12752235

 12762553

 12749656

 12765132

 12747076

 12767712

 12744241

 12770547

 12741662

 12773119

 12739082

 12775679

 12737792

 12778239

 12779519

# Harmonies

## Analogous

The Analogous color harmony consists of three colors that are next to each other on the color wheel.



13346203



12757394



11841168

# Triad

The Triadic color harmony groups three colors that are evenly spaced from another and form a triangle on the color wheel.



12757394



8959666



11970756

# Complementary

The Complementary color scheme is a pair of colors which are on the opposite of each other on the color wheel.



12757394



9612226

# Split Complementary

Split-complementary colors differ from the complementary color scheme. The scheme consists of three colors, the original color and two neighbors of the complement color.



10726858



12757394



8959424

# Square

The Square scheme is like the rectangle color scheme, but the four colors are evenly spaced on the color wheel.



12757394



9680291



9613768



12952760

# Rectangle

The Rectangle color scheme consists of four colors that form a rectangle on the color wheel.



12757394



11121044



9613768



11577799

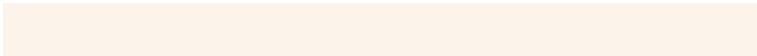


# Sweetspot

The Sweet Spot groups the original color and five complimentary colors.



12757394



16577515



12751532



8419957



0



8421504



# Same Dimension

The Same Dimension uses a secret algorithm to generate beautiful new colors.



12757394



16569777



12763282



6380631



10571008



2166784

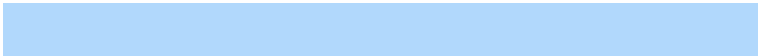


# Inverse Universe

The Inverse Universe completely reimagines the original color for something new.



9612226



11655420



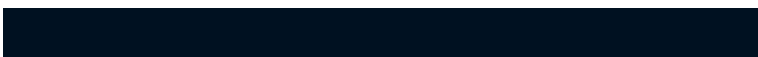
9606338



5725281



21665



4385



# Previews

## White Background



This preview shows how the Decimal color 12757394 looks on a white background.

## Color Contrast Check

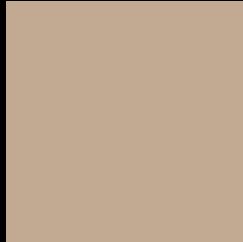
Large Text (above 18pt) WCAG AA × Fail

Any Text WCAG AA × Fail

Large Text (above 18pt) WCAG AAA × Fail

Any Text WCAG AAA × Fail

# Black Background



This preview shows how the Decimal color 12757394 looks on a black background.

## Color Contrast Check

Large Text (above 18pt) WCAG AA ✓ Pass

Any Text WCAG AA ✓ Pass

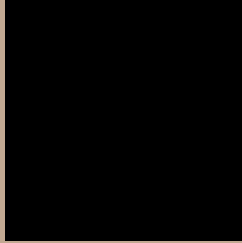
Large Text (above 18pt) WCAG AAA ✓ Pass

Any Text WCAG AAA ✓ Pass

If you want to check with other color combinations, try the [Color Contrast Checker](#).



## Decimal 12757394 Background



This preview shows how black text looks on a background with the Decimal color 12757394.



This preview shows how white text looks on a background with the Decimal color 12757394.

# Color Blindness Simulation

Color vision deficiency is a very complex topic, and I could not describe the different causes any better than Wikipedia does, so if you want to learn more, you should check out their [article about color blindness](#).

## Dichromacy





**Tritanopia**  
13018545

# Trichromacy



**Original Color**  
12757394

**Protanomaly**  
12233875

**Deuteranomaly**  
13019282

**Tritanomaly**  
12953254

# Monochromacy



**Original Color**  
12757394

**Achromatopsia**  
11447982

**Achromatomaly**  
11906212

# CSS Examples

## Text

The CSS property to change the color of the text to Decimal 12757394 is called "color". The color property can be set on classes, ids or directly on the HTML element.

This example shows how text in the color #C2A992 looks like.

```
.text, #text, p{  
  color:#C2A992  
}
```

If you want to add a text shadow in that color use the text-shadow property, you can generate a text shadow directly with our [CSS Text Shadow Generator](#).

Here you see how black text with a 4 pixel #C2A992 colored shadow looks like.

```
.shadow{ text-shadow: 4px 4px 2px #C2A992
}
```

## Border

The CSS property to change the border of an element to Decimal 12757394 is called "border". The border property can be set on classes, ids or directly on the HTML element.

This example shows the color as border, it can be applied via the CSS property "border" or "border-color".

```
.border, #border, table{ border:4px solid
#C2A992 }
```

If only the border color should be changed use the property `border-color`.

```
.border{ border-color:#C2A992 }
```

If you want to add a box shadow in that color use:

Here you see how a box with a 4 pixel #C2A992 colored shadow looks like.

```
.boxshadow{ -moz-box-shadow:4px 4px 4px  
4px #C2A992; -webkit-box-shadow:4px 4px  
4px 4px #C2A992; box-shadow:4px 4px 4px  
4px #C2A992 }
```

# Background

The CSS property to change the background color of an element to Decimal 12757394 is called "background". The background property can be set on classes, ids or directly on the HTML element.

```
.background, #background, body{  
background:#C2A992 }
```

If only the background color should be changed can be used:

```
.background{ background-color:#C2A992 }
```

This example shows the color as background, it is applied via the CSS property "background".

To optimize and compress your CSS code, you can use our [online CSS compressor and optimizer](#) based on csstidy. If you want to create a linear or radial gradient as background or border, check our [CSS Gradient Generator](#).



Hey! You found this booklet interesting? Support Converting Colors with the new Membership Option!

The pro membership hides all ads, plus gives you double the colors in the color bucket, and more awesome pro features!

**[Learn more, Memberships starting at \\$2.50/m!](#)**

**Follow me  
on Twitter!**

@ConvertingColor