

Converting Colors

Decimal(12757657)

Have a look what the booklet for
Decimal(12757657) contains.

Decimal(12757657)	3
<i>Conversions</i>	4
<i>Details</i>	6
<i>Harmonies</i>	11
<i>Previews</i>	23
<i>Color Blindness Simulation</i>	26
<i>CSS Examples</i>	29

Color

Decimal(12757657)

Conversions

Conversions Part 1

Format	Color
Hex	C2AA99
RGB	194, 170, 153
RGB Percent	76%, 67%, 60%
CMY	0.2392, 0.3333, 0.4000
CMYK	0.00, 0.12, 0.21, 0.24
HSL	25°, 25%, 68%
HSV	25°, 21%, 76%
XYZ	42.3726, 42.5187, 36.1106
YIQ	175.2380, 19.7610, -0.1990

Conversions

Conversions Part 2

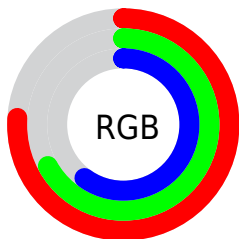
Format	Color
RYB	194, 182, 153
Decimal	12757657
CIELab	71.23, 5.98, 11.95
CIELCh	71, 13.367, 63.414
Yxy	42.5187, 0.3502, 0.3514
Android (android.graphics.Color)	4290947737 (0xFFC2AA99)
YUV	175.2380, -10.9633, 16.4543
Hunter-Lab	65.2064, 1.8824, 12.8102

Details

The Decimal color **12757657** is a light color, and the websafe version is hex **CC9999**. A complement of this color would be **10072514**, and the grayscale version is **11513775**.

A 20% lighter version of the original color is **16507343**, and **9205350** is the 20% darker color. If you saturate the color by 10%, you get **12754822**, and if you desaturate by 10%, it is **12760492**.

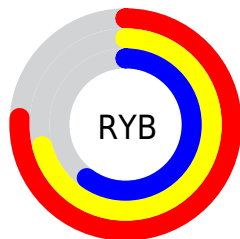
Distribution



Red (76%)

Green (67%)

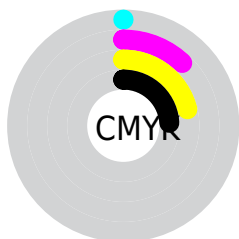
Blue (60%)



Red (76%)

Yellow (71%)

Blue (60%)

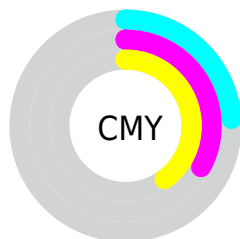


Cyan (0%)

Magenta (12%)

Yellow (21%)

Black (24%)



Cyan (24%)

Magenta (33%)

Yellow (40%)

Brightness & Saturation Gradients

These gradients show how the Decimal color 12757657 changes by changing the brightness by 10 percent. The first figure shows a shift by +10% for each color and the second figure -10%.

Similar to the brightness gradients but the following saturation gradients show a change of the Decimal color 12757657 by changing the saturation by 10% instead.

 12757657

 12757657

16777215

 10981503

 16507343

 9205350

 16776940

 7494990

 5850679

 4271906

 2824972

 1310720

 0

 12757657

 12757657

 12754822

 12760492

 12751730

 12763584

 12748895

 12766419

 12746059

 12769255

 12742968

 12772346

 12740133

 12775167

 12737297

 12777983

 12734464

 12779519

Harmonies

Analogous

The Analogous color harmony consists of three colors that are next to each other on the color wheel.



13150113



12757657



12037782

Triad

The Triadic color harmony groups three colors that are evenly spaced from another and form a triangle on the color wheel.



12757657



9615023



11774915

Complementary

The Complementary color scheme is a pair of colors which are on the opposite of each other on the color wheel.



12757657



10072514

Split Complementary

Split-complementary colors differ from the complementary color scheme. The scheme consists of three colors, the original color and two neighbors of the complement color.



10727366



12757657



9418171

Square

The Square scheme is like the rectangle color scheme, but the four colors are evenly spaced on the color wheel.



12757657



10269859



9876420



12626106

Rectangle

The Rectangle color scheme consists of four colors that form a rectangle on the color wheel.



12757657



11448728



9876420



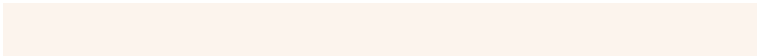
11381957

Sweetspot

The Sweet Spot groups the original color and five complimentary colors.



12757657



16577773



12753330



8419959



0



8421504

Same Dimension

The Same Dimension uses a secret algorithm to generate beautiful new colors.



12757657



16570557



12762777



6380375



10568448



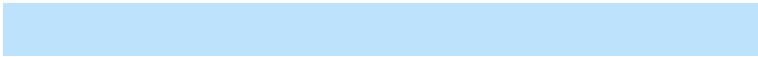
2166272

Inverse Universe

The Inverse Universe completely reimagines the original color for something new.



10072514



12444412



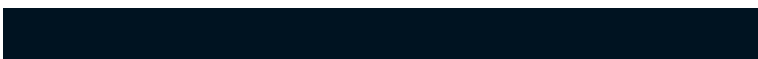
10067394



5725537



24225



4897

Previews

White Background



This preview shows how the Decimal color 12757657 looks on a white background.

Color Contrast Check

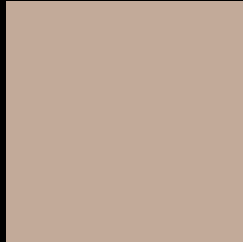
Large Text (above 18pt) WCAG AA × Fail

Any Text WCAG AA × Fail

Large Text (above 18pt) WCAG AAA × Fail

Any Text WCAG AAA × Fail

Black Background



This preview shows how the Decimal color 12757657 looks on a black background.

Color Contrast Check

Large Text (above 18pt) WCAG AA ✓ Pass

Any Text WCAG AA ✓ Pass

Large Text (above 18pt) WCAG AAA ✓ Pass

Any Text WCAG AAA ✓ Pass

If you want to check with other color combinations, try the [Color Contrast Checker](#).

Decimal 12757657 Background



This preview shows how black text looks on a background with the Decimal color 12757657.



This preview shows how white text looks on a background with the Decimal color 12757657.

Color Blindness Simulation

Color vision deficiency is a very complex topic, and I could not describe the different causes any better than Wikipedia does, so if you want to learn more, you should check out their [article about color blindness](#).


Dichromacy



Original Color
12757657

Protanopia
11972251

Deuteranopia
13084825



Tritanopia
12953267

Trichromacy



Original Color
12757657

Protanomaly
12234138

Deuteranomaly
12954009

Tritanomaly
12887978

Monochromacy



Original Color
12757657

Achromatopsia
11513775

Achromatomaly
11972007

CSS Examples

Text

The CSS property to change the color of the text to Decimal 12757657 is called "color". The color property can be set on classes, ids or directly on the HTML element.

This example shows how text in the color #C2AA99 looks like.

```
.text, #text, p{  
    color:#C2AA99  
}
```

If you want to add a text shadow in that color use the text-shadow property, you can generate a text shadow directly with our [CSS Text Shadow Generator](#).

Here you see how black text with a 4 pixel #C2AA99 colored shadow looks like.

```
.shadow{ text-shadow: 4px 4px 2px #C2AA99
}
```

Border

The CSS property to change the border of an element to Decimal 12757657 is called "border". The border property can be set on classes, ids or directly on the HTML element.

This example shows the color as border, it can be applied via the CSS property "border" or "border-color".

```
.border, #border, table{ border:4px solid
#C2AA99 }
```

If only the border color should be changed use the property `border-color`.

```
.border{ border-color:#C2AA99 }
```

If you want to add a box shadow in that color use:

Here you see how a box with a 4 pixel #C2AA99 colored shadow looks like.

```
.boxshadow{ -moz-box-shadow:4px 4px 4px  
4px #C2AA99; -webkit-box-shadow:4px 4px  
4px 4px #C2AA99; box-shadow:4px 4px 4px  
4px #C2AA99 }
```

Background

The CSS property to change the background color of an element to Decimal 12757657 is called "background". The background property can be set on classes, ids or directly on the HTML element.

```
.background, #background, body{  
background:#C2AA99 }
```

If only the background color should be changed can be used:

```
.background{ background-color:#C2AA99 }
```

This example shows the color as background, it is applied via the CSS property "background".

To optimize and compress your CSS code, you can use our [online CSS compressor and optimizer](#) based on csstidy. If you want to create a linear or radial gradient as background or border, check our [CSS Gradient Generator](#).

Hey! You found this booklet interesting? Support Converting Colors with the new Membership Option!

The pro membership hides all ads, plus gives you double the colors in the color bucket, and more awesome pro features!

[Learn more, Memberships starting at \\$2.50/m!](#)

**Follow me
on Twitter!**

@ConvertingColor