

# Converting Colors

Decimal(12757676)

Have a look what the booklet for  
Decimal(12757676) contains.

<b>Decimal(12757676)</b> .....	3
<i><b>Conversions</b></i> .....	4
<i><b>Details</b></i> .....	6
<i><b>Harmonies</b></i> .....	11
<i><b>Previews</b></i> .....	23
<i><b>Color Blindness Simulation</b></i> .....	26
<i><b>CSS Examples</b></i> .....	29

# **Color**

**Decimal(12757676)**

# Conversions

## Conversions Part 1

Format	Color
Hex	C2AAAC
RGB	194, 170, 172
RGB Percent	76%, 67%, 67%
CMY	0.2392, 0.3333, 0.3255
CMYK	0.00, 0.12, 0.11, 0.24
HSL	355°, 16%, 71%
HSV	355°, 12%, 76%
XYZ	44.0693, 43.1973, 45.0449
YIQ	177.4040, 13.6620, 5.7100

# Conversions

## Conversions Part 2

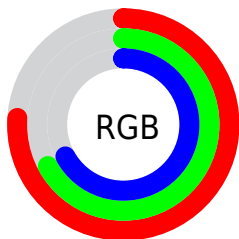
Format	Color
<a href="#">RYB</a>	<a href="#">194, 170, 172</a>
Decimal	<a href="#">12757676</a>
CIELab	<a href="#">71.69, 9.02, 2.16</a>
CIELCh	<a href="#">72, 9.279, 13.477</a>
Yxy	<a href="#">43.1973, 0.3331, 0.3265</a>
Android (android.graphics.Color)	<a href="#">4290947756</a> ( <a href="#">0xFFC2AAAC</a> )
YUV	<a href="#">177.4040, -2.6642, 14.5547</a>
Hunter-Lab	<a href="#">65.7247, 4.6684, 5.3724</a>

# Details

The Decimal color **12757676** is a light color, and the websafe version is hex **CC9999**. A complement of this color would be **11190976**, and the grayscale version is **11645361**.

A 20% lighter version of the original color is **16507363**, and **9205368** is the 20% darker color. If you saturate the color by 10%, you get **12752794**, and if you desaturate by 10%, it is **12762558**.

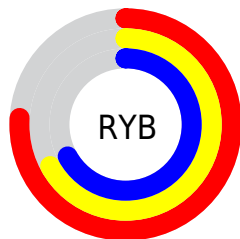
# Distribution



Red (76%)

Green (67%)

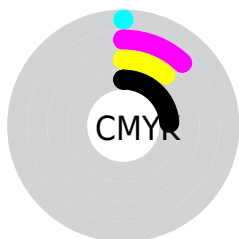
Blue (67%)



Red (76%)

Yellow (67%)

Blue (67%)

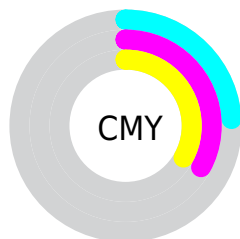


Cyan (0%)

Magenta (12%)

Yellow (11%)

Black (24%)



Cyan (24%)

Magenta (33%)

Yellow (33%)

# Brightness & Saturation Gradients

These gradients show how the Decimal color 12757676 changes by changing the brightness by 10 percent. The first figure shows a shift by +10% for each color and the second figure -10%.

Similar to the brightness gradients but the following saturation gradients show a change of the Decimal color 12757676 by changing the saturation by 10% instead.



 12757676

 12757676

16777215

 10981521

 16507363

 9205368

16776959

 7560543

 5916231

 4337457

 2890268

 1638401

 0

 12757676

 12757676

 12752794

 12762558

 12747656

 12767696

 12742775

 12772577

 12737637

 12777715

 12732755

 12779519

 12727873

 12722736

 12717854

 12714000

# Harmonies

## Analogous

The Analogous color harmony consists of three colors that are next to each other on the color wheel.



12495541



12757676



12692388

# Triad

The Triadic color harmony groups three colors that are evenly spaced from another and form a triangle on the color wheel.



12757676



11121571



10662592

# Complementary

The Complementary color scheme is a pair of colors which are on the opposite of each other on the color wheel.



12757676



11190976

# Split Complementary

Split-complementary colors differ from the complementary color scheme. The scheme consists of three colors, the original color and two neighbors of the complement color.



10269883



12757676



10532011

# Square

The Square scheme is like the rectangle color scheme, but the four colors are evenly spaced on the color wheel.



12757676



11776159



10204595



11317184

# Rectangle

The Rectangle color scheme consists of four colors that form a rectangle on the color wheel.



12757676



12496289



10204595



10466238

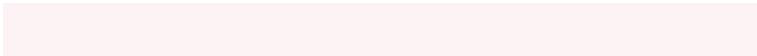


# Sweetspot

The Sweet Spot groups the original color and five complimentary colors.



12757676



16577267



12626626



8419706



0



8421504



# Same Dimension

The Same Dimension uses a secret algorithm to generate beautiful new colors.



12757676



16570330



12760234



6379352



10551309



2162691



# Inverse Universe

The Inverse Universe completely reimagines the original color for something new.



12757676



16570330



11188418



6379352



10551309

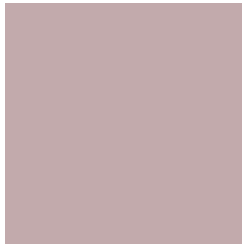


2162691



# Previews

## White Background



This preview shows how the Decimal color 12757676 looks on a white background.

## Color Contrast Check

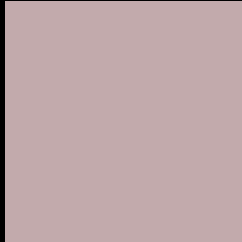
Large Text (above 18pt) WCAG AA × Fail

Any Text WCAG AA × Fail

Large Text (above 18pt) WCAG AAA × Fail

Any Text WCAG AAA × Fail

# Black Background



This preview shows how the Decimal color 12757676 looks on a black background.

## Color Contrast Check

Large Text (above 18pt) WCAG AA ✓ Pass

Any Text WCAG AA ✓ Pass

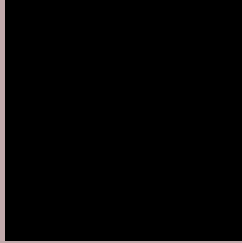
Large Text (above 18pt) WCAG AAA ✓ Pass

Any Text WCAG AAA ✓ Pass

If you want to check with other color combinations, try the [Color Contrast Checker](#).



## Decimal 12757676 Background



This preview shows how black text looks on a background with the Decimal color 12757676.



This preview shows how white text looks on a background with the Decimal color 12757676.

# Color Blindness Simulation

Color vision deficiency is a very complex topic, and I could not describe the different causes any better than Wikipedia does, so if you want to learn more, you should check out their [article about color blindness](#).

## Dichromacy



**Original Color**  
12757676

**Protanopia**  
11775919

**Deuteranopia**  
12757676



**Tritanopia**  
12822710

# Trichromacy



**Original Color**  
12757676

**Protanomaly**  
12103086

**Deuteranomaly**  
12757676

**Tritanomaly**  
12822962

# Monochromacy



**Original Color**  
12757676

**Achromatopsia**  
11645361

**Achromatomaly**  
12037807

# CSS Examples

## Text

The CSS property to change the color of the text to Decimal 12757676 is called "color". The color property can be set on classes, ids or directly on the HTML element.

This example shows how text in the color #C2AAAC looks like.

```
.text, #text, p{  
  color:#C2AAAC  
}
```

If you want to add a text shadow in that color use the text-shadow property, you can generate a text shadow directly with our [CSS Text Shadow Generator](#).

Here you see how black text with a 4 pixel #C2AAAC colored shadow looks like.

```
.shadow{ text-shadow: 4px 4px 2px #C2AAAC
}
```

## Border

The CSS property to change the border of an element to Decimal 12757676 is called "border". The border property can be set on classes, ids or directly on the HTML element.

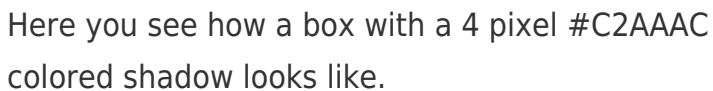
This example shows the color as border, it can be applied via the CSS property "border" or "border-color".

```
.border, #border, table{ border:4px solid
#C2AAAC }
```

If only the border color should be changed use the property `border-color`.

```
.border{ border-color:#C2AAAC }
```

If you want to add a box shadow in that color use:



Here you see how a box with a 4 pixel #C2AAAC colored shadow looks like.

```
.boxshadow{ -moz-box-shadow:4px 4px 4px  
4px #C2AAAC; -webkit-box-shadow:4px 4px  
4px 4px #C2AAAC; box-shadow:4px 4px 4px  
4px #C2AAAC }
```

# Background

The CSS property to change the background color of an element to Decimal 12757676 is called "background". The background property can be set on classes, ids or directly on the HTML element.

```
.background, #background, body{  
background:#C2AAAC }
```

If only the background color should be changed can be used:

```
.background{ background-color:#C2AAAC }
```

This example shows the color as background, it is applied via the CSS property "background".

To optimize and compress your CSS code, you can use our [online CSS compressor and optimizer](#) based on csstidy. If you want to create a linear or radial gradient as background or border, check our [CSS Gradient Generator](#).



Hey! You found this booklet interesting? Support Converting Colors with the new Membership Option!

The pro membership hides all ads, plus gives you double the colors in the color bucket, and more awesome pro features!

**[Learn more, Memberships starting at \\$2.50/m!](#)**

**Follow me  
on Twitter!**

@ConvertingColor