

Converting Colors

Decimal(12759735)

Have a look what the booklet for
Decimal(12759735) contains.

Decimal(12759735)	3
<i>Conversions</i>	4
<i>Details</i>	6
<i>Harmonies</i>	11
<i>Previews</i>	23
<i>Color Blindness Simulation</i>	26
<i>CSS Examples</i>	29

Color

Decimal(12759735)

Conversions

Conversions Part 1

Format	Color
Hex	C2B2B7
RGB	194, 178, 183
RGB Percent	76%, 70%, 72%
CMY	0.2392, 0.3020, 0.2824
CMYK	0.00, 0.08, 0.06, 0.24
HSL	341°, 12%, 73%
HSV	341°, 8%, 76%
XYZ	46.7158, 46.7290, 51.3572
YIQ	183.3540, 7.9310, 4.9470

Conversions

Conversions Part 2

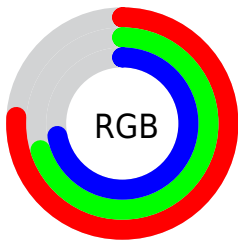
Format	Color
RYB	194, 178, 183
Decimal	12759735
CIELab	74.02, 6.59, -0.48
CIELCh	74, 6.606, 355.801
Yxy	46.7290, 0.3226, 0.3227
Android (android.graphics.Color)	4290949815 (0xFFC2B2B7)
YUV	183.3540, -0.1745, 9.3365
Hunter-Lab	68.3586, 2.3580, 3.3070

Details

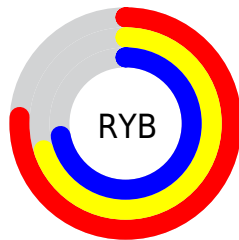
The Decimal color **12759735** is a light color, and the websafe version is hex **CCCCCC**. A complement of this color would be **11715261**, and the grayscale version is **12040119**.

A 20% lighter version of the original color is **16509679**, and **9207170** is the 20% darker color. If you saturate the color by 10%, you get **12754858**, and if you desaturate by 10%, it is **12764612**.

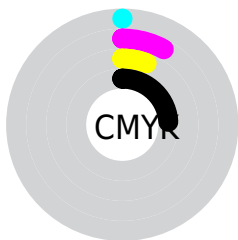
Distribution



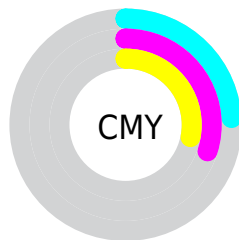
- Red (76%)
- Green (70%)
- Blue (72%)



- Red (76%)
- Yellow (70%)
- Blue (72%)



- Cyan (0%)
- Magenta (8%)
- Yellow (6%)
- Black (24%)



- Cyan (24%)
- Magenta (30%)
- Yellow (28%)

Brightness & Saturation Gradients

These gradients show how the Decimal color 12759735 changes by changing the brightness by 10 percent. The first figure shows a shift by +10% for each color and the second figure -10%.

Similar to the brightness gradients but the following saturation gradients show a change of the Decimal color 12759735 by changing the saturation by 10% instead.

■ 12759735

■ 12759735

16777215

■ 10983324

■ 16509679

■ 9207170

■ 7562345

■ 5918033

■ 4404794

■ 2891812

■ 1640975

■ 0

■ 12759735

■ 12759735

 12754858

 12764612

 12749724

 12769746

 12744847

 12774623

 12739714

 12779500

 12734836

 12779514

 12729959

 12779519

 12724826

 12719948

 12714815

Harmonies

Analogous

The Analogous color harmony consists of three colors that are next to each other on the color wheel.



12432317



12759735



12825265

Triad

The Triadic color harmony groups three colors that are evenly spaced from another and form a triangle on the color wheel.



12759735



11909035



11122880

Complementary

The Complementary color scheme is a pair of colors which are on the opposite of each other on the color wheel.



12759735



11715261

Split Complementary

Split-complementary colors differ from the complementary color scheme. The scheme consists of three colors, the original color and two neighbors of the complement color.



10992059



12759735



11450799

Square

The Square scheme is like the rectangle color scheme, but the four colors are evenly spaced on the color wheel.



12759735



12367274



11123381



11515842

Rectangle

The Rectangle color scheme consists of four colors that form a rectangle on the color wheel.



12759735



12759981



11123381



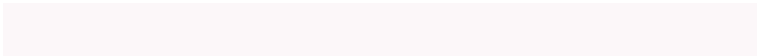
11057598

Sweetspot

The Sweet Spot groups the original color and five complimentary colors.



12759735



16578553



12432066



8420734



0



8421504

Same Dimension

The Same Dimension uses a secret algorithm to generate beautiful new colors.



12759735



16573419



12760498



6379354



10551346



2162698

Inverse Universe

The Inverse Universe completely reimagines the original color for something new.



12759735



16573419



11714498



6379354



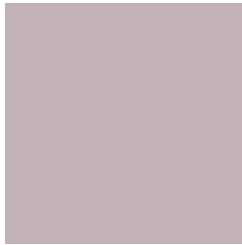
10551346



2162698

Previews

White Background



This preview shows how the Decimal color 12759735 looks on a white background.

Color Contrast Check

Large Text (above 18pt) WCAG AA × Fail

Any Text WCAG AA × Fail

Large Text (above 18pt) WCAG AAA × Fail

Any Text WCAG AAA × Fail

Black Background



This preview shows how the Decimal color 12759735 looks on a black background.

Color Contrast Check

Large Text (above 18pt) WCAG AA ✓ Pass

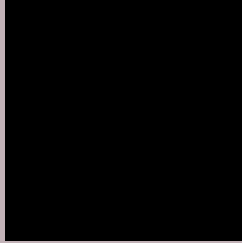
Any Text WCAG AA ✓ Pass

Large Text (above 18pt) WCAG AAA ✓ Pass

Any Text WCAG AAA ✓ Pass

If you want to check with other color combinations, try the [Color Contrast Checker](#).

Decimal 12759735 Background



This preview shows how black text looks on a background with the Decimal color 12759735.



This preview shows how white text looks on a background with the Decimal color 12759735.

Color Blindness Simulation

Color vision deficiency is a very complex topic, and I could not describe the different causes any better than Wikipedia does, so if you want to learn more, you should check out their [article about color blindness](#).

Dichromacy



Original Color
12759735

Protanopia
12105145

Deuteranopia
13086903



Tritanopia
12825023

Trichromacy



Original Color
12759735

Protanomaly
12367032

Deuteranomaly
12956087

Tritanomaly
12825020

Monochromacy



Original Color
12759735

Achromatopsia
12040119

Achromatomaly
12301751

CSS Examples

Text

The CSS property to change the color of the text to Decimal 12759735 is called "color". The color property can be set on classes, ids or directly on the HTML element.

This example shows how text in the color #C2B2B7 looks like.

```
.text, #text, p{  
  color:#C2B2B7  
}
```

If you want to add a text shadow in that color use the text-shadow property, you can generate a text shadow directly with our [CSS Text Shadow Generator](#).

Here you see how black text with a 4 pixel #C2B2B7 colored shadow looks like.

```
.shadow{ text-shadow: 4px 4px 2px #C2B2B7
}
```

Border

The CSS property to change the border of an element to Decimal 12759735 is called "border". The border property can be set on classes, ids or directly on the HTML element.

This example shows the color as border, it can be applied via the CSS property "border" or "border-color".

```
.border, #border, table{ border:4px solid
#C2B2B7 }
```

If only the border color should be changed use the property `border-color`.

```
.border{ border-color:#C2B2B7 }
```

If you want to add a box shadow in that color use:

Here you see how a box with a 4 pixel #C2B2B7 colored shadow looks like.

```
.boxshadow{ -moz-box-shadow:4px 4px 4px  
4px #C2B2B7; -webkit-box-shadow:4px 4px  
4px 4px #C2B2B7; box-shadow:4px 4px 4px  
4px #C2B2B7 }
```

Background

The CSS property to change the background color of an element to Decimal 12759735 is called "background". The background property can be set on classes, ids or directly on the HTML element.

```
.background, #background, body{  
background:#C2B2B7 }
```

If only the background color should be changed can be used:

```
.background{ background-color:#C2B2B7 }
```

This example shows the color as background, it is applied via the CSS property "background".

To optimize and compress your CSS code, you can use our [online CSS compressor and optimizer](#) based on csstidy. If you want to create a linear or radial gradient as background or border, check our [CSS Gradient Generator](#).

Hey! You found this booklet interesting? Support Converting Colors with the new Membership Option!

The pro membership hides all ads, plus gives you double the colors in the color bucket, and more awesome pro features!

[Learn more, Memberships starting at \\$2.50/m!](#)

**Follow me
on Twitter!**

@ConvertingColor