

Converting Colors

Decimal(12799359)

Have a look what the booklet for
Decimal(12799359) contains.

Decimal(12799359)	3
<i>Conversions</i>	4
<i>Details</i>	6
<i>Harmonies</i>	11
<i>Previews</i>	23
<i>Color Blindness Simulation</i>	26
<i>CSS Examples</i>	29

Color

Decimal(12799359)

Conversions

Conversions Part 1

Format	Color
Hex	C34D7F
RGB	195, 77, 127
RGB Percent	76%, 30%, 50%
CMY	0.2353, 0.6980, 0.5020
CMYK	0.00, 0.61, 0.35, 0.24
HSL	335°, 50%, 53%
HSV	335°, 61%, 76%
XYZ	28.9903, 18.4422, 22.1104
YIQ	117.9820, 54.2780, 40.5660

Conversions

Conversions Part 2

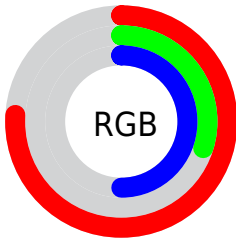
Format	Color
RYB	195, 77, 127
Decimal	12799359
CIELab	50.03, 51.97, -3.71
CIElCh	50, 52.098, 355.912
Yxy	18.4422, 0.4169, 0.2652
Android (android.graphics.Color)	4290989439 (0xFFC34D7F)
YUV	117.9820, 4.4459, 67.5448
Hunter-Lab	42.9443, 45.3469, -0.4651

Details

The Decimal color **12799359** is a dark color, and the websafe version is hex **CC6699**. The color can be described as dark muted rose. A complement of this color would be **5096337**, and the grayscale version is **7763574**.

A 20% lighter version of the original color is **16745396**, and **8982350** is the 20% darker color. If you saturate the color by 10%, you get **12794484**, and if you desaturate by 10%, it is **12804490**.

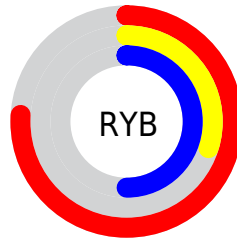
Distribution



Red (76%)

Green (30%)

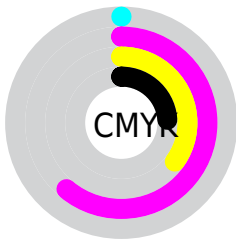
Blue (50%)



Red (76%)

Yellow (30%)

Blue (50%)

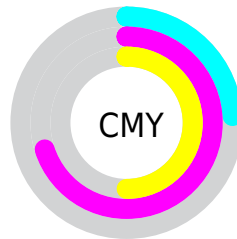


Cyan (0%)

Magenta (61%)

Yellow (35%)

Black (24%)



Cyan (24%)

Magenta (70%)

Yellow (50%)

Brightness & Saturation Gradients

These gradients show how the Decimal color 12799359 changes by changing the brightness by 10 percent. The first figure shows a shift by +10% for each color and the second figure -10%.

Similar to the brightness gradients but the following saturation gradients show a change of the Decimal color 12799359 by changing the saturation by 10% instead.

 12799359

 12799359

16777215

 10891622

 16745396

 8982350


 16752591

 7143479

 16759787

 5373986

 16767231

 3801100

 16774655

 1310720

 0

 12799359

 12799359

 12794484

 12804490

 12789353

 12809365

 12784221

 12814241

 12779603

 12819372

 12824503

 12829378

 12834510

 12839385

 12844516

Harmonies

Analogous

The Analogous color harmony consists of three colors that are next to each other on the color wheel.



10967721



12799359



12996947

Triad

The Triadic color harmony groups three colors that are evenly spaced from another and form a triangle on the color wheel.



12799359



6848542



35008

Complementary

The Complementary color scheme is a pair of colors which are on the opposite of each other on the color wheel.



12799359



5096337

Split Complementary

Split-complementary colors differ from the complementary color scheme. The scheme consists of three colors, the original color and two neighbors of the complement color.



35997



12799359



2721859

Square

The Square scheme is like the rectangle color scheme, but the four colors are evenly spaced on the color wheel.



12799359



9663251



35951



32464

Rectangle

The Rectangle color scheme consists of four colors that form a rectangle on the color wheel.



12799359



12344121



35951



35510

Sweetspot

The Sweet Spot groups the original color and five complimentary colors.



12799359



16568290



9457091



8414063



0



8421504

Same Dimension

The Same Dimension uses a secret algorithm to generate beautiful new colors.



12799359



16532626



12801357



6379355



10551364



2162702

Inverse Universe

The Inverse Universe completely reimagines the original color for something new.



12799359



16532626



5094339



6379355



10551364



2162702

Previews

White Background



This preview shows how the Decimal color 12799359 looks on a white background.

Color Contrast Check

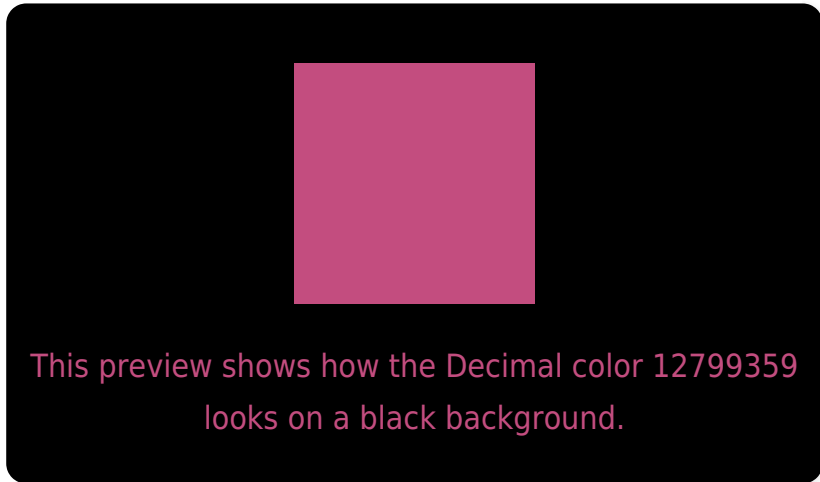
Large Text (above 18pt) WCAG AA ✓ Pass

Any Text WCAG AA × Fail

Large Text (above 18pt) WCAG AAA × Fail

Any Text WCAG AAA × Fail

Black Background



Color Contrast Check

Large Text (above 18pt) WCAG AA ✓ Pass

Any Text WCAG AA ✓ Pass

Large Text (above 18pt) WCAG AAA ✓ Pass

Any Text WCAG AAA × Fail

If you want to check with other color combinations, try the [Color Contrast Checker](#).

Decimal 12799359 Background



This preview shows how black text looks on a background with the Decimal color 12799359.



This preview shows how white text looks on a background with the Decimal color 12799359.

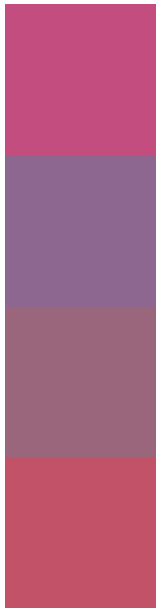
Color Blindness Simulation

Color vision deficiency is a very complex topic, and I could not describe the different causes any better than Wikipedia does, so if you want to learn more, you should check out their [article about color blindness](#).

Dichromacy



Trichromacy



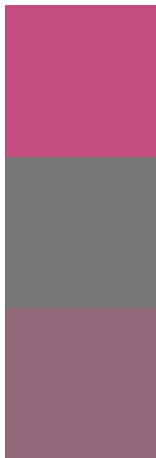
Original Color
12799359

Protanomaly
9332624

Deuteranomaly
10118779

Tritanomaly
12669544

Monochromacy



Original Color
12799359

Achromatopsia
7763574

Achromatomaly
9594745

CSS Examples

Text

The CSS property to change the color of the text to Decimal 12799359 is called "color". The color property can be set on classes, ids or directly on the HTML element.

This example shows how text in the color #C34D7F looks like.

```
.text, #text, p{  
  color:#C34D7F  
}
```

If you want to add a text shadow in that color use the text-shadow property, you can generate a text shadow directly with our [CSS Text Shadow Generator](#).

Here you see how black text with a 4 pixel #C34D7F colored shadow looks like.

```
.shadow{ text-shadow: 4px 4px 2px #C34D7F
}
```

Border

The CSS property to change the border of an element to Decimal 12799359 is called "border". The border property can be set on classes, ids or directly on the HTML element.

This example shows the color as border, it can be applied via the CSS property "border" or "border-color".

```
.border, #border, table{ border:4px solid
#C34D7F }
```

If only the border color should be changed use the property `border-color`.

```
.border{ border-color:#C34D7F }
```

If you want to add a box shadow in that color use:

Here you see how a box with a 4 pixel #C34D7F colored shadow looks like.

```
.boxshadow{ -moz-box-shadow:4px 4px 4px  
4px #C34D7F; -webkit-box-shadow:4px 4px  
4px 4px #C34D7F; box-shadow:4px 4px 4px  
4px #C34D7F }
```

Background

The CSS property to change the background color of an element to Decimal 12799359 is called "background". The background property can be set on classes, ids or directly on the HTML element.

```
.background, #background, body{  
background:#C34D7F }
```

If only the background color should be changed can be used:

```
.background{ background-color:#C34D7F }
```

This example shows the color as background, it is applied via the CSS property "background".

To optimize and compress your CSS code, you can use our [online CSS compressor and optimizer](#) based on csstidy. If you want to create a linear or radial gradient as background or border, check our [CSS Gradient Generator](#).

Hey! You found this booklet interesting? Support Converting Colors with the new Membership Option!

The pro membership hides all ads, plus gives you double the colors in the color bucket, and more awesome pro features!

[Learn more, Memberships starting at \\$2.50/m!](#)

**Follow me
on Twitter!**

@ConvertingColor