

# Converting Colors

Decimal(12815213)

Have a look what the booklet for  
Decimal(12815213) contains.

<b>Decimal(12815213)</b> .....	3
<i><b>Conversions</b></i> .....	4
<i><b>Details</b></i> .....	6
<i><b>Harmonies</b></i> .....	11
<i><b>Previews</b></i> .....	23
<i><b>Color Blindness Simulation</b></i> .....	26
<i><b>CSS Examples</b></i> .....	29

# **Color**

**Decimal(12815213)**

# Conversions

## Conversions Part 1

<b>Format</b>	<b>Color</b>
Hex	C38B6D
RGB	195, 139, 109
RGB Percent	76%, 55%, 43%
CMY	0.2353, 0.4549, 0.5725
CMYK	0.00, 0.29, 0.44, 0.24
HSL	21°, 42%, 60%
HSV	21°, 44%, 76%
XYZ	34.4986, 31.1715, 18.6664
YIQ	152.3240, 43.0060, 2.5420

# Conversions

## Conversions Part 2

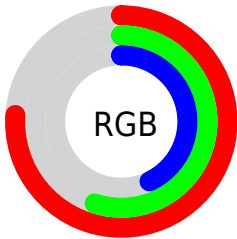
Format	Color
<a href="#">RYB</a>	<a href="#">195, 155, 109</a>
Decimal	<a href="#">12815213</a>
CIELab	<a href="#">62.65, 17.65, 24.50</a>
CIELCh	<a href="#">63, 30.195, 54.242</a>
Yxy	<a href="#">31.1715, 0.4091, 0.3696</a>
Android (android.graphics.Color)	<a href="#">4291005293 (0xFFC38B6D)</a>
YUV	<a href="#">152.3240, -21.3587, 37.4269</a>
Hunter-Lab	<a href="#">55.8314, 12.5914, 19.2592</a>

# Details

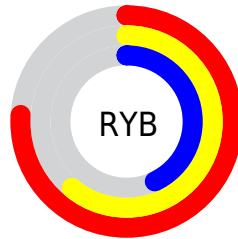
The Decimal color **12815213** is a dark color, and the websafe version is hex **CC9966**. A complement of this color would be **7185859**, and the grayscale version is **10066329**.

A 20% lighter version of the original color is **16630177**, and **9132349** is the 20% darker color. If you saturate the color by 10%, you get **12811866**, and if you desaturate by 10%, it is **12818561**.

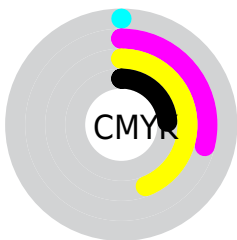
# Distribution



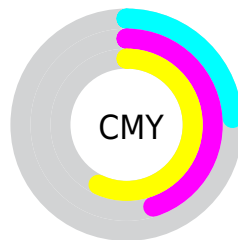
- Red (76%)
- Green (55%)
- Blue (43%)



- Red (76%)
- Yellow (61%)
- Blue (43%)



- Cyan (0%)
- Magenta (29%)
- Yellow (44%)
- Black (24%)



- Cyan (24%)
- Magenta (45%)
- Yellow (57%)

# Brightness & Saturation Gradients

These gradients show how the Decimal color 12815213 changes by changing the brightness by 10 percent. The first figure shows a shift by +10% for each color and the second figure -10%.

Similar to the brightness gradients but the following saturation gradients show a change of the Decimal color 12815213 by changing the saturation by 10% instead.



 12815213

 12815213

16777215

 10973524

 16630177

 9132349

 16768444

 7356711

 16775640

 5647122

 16777204

 4003072

 2424832

 0

 12815213

 12815213

 12811866

 12818561

 12808774

 12821652

 12805426

 12825000

 12802079

 12828347

 12798988

 12831439

 12796928

 12834786

 12838133

 12841471

 12844543

# Harmonies

## Analogous

The Analogous color harmony consists of three colors that are next to each other on the color wheel.



13468803



12815213



11506786

# Triad

The Triadic color harmony groups three colors that are evenly spaced from another and form a triangle on the color wheel.



12815213



5547665



9736904

# Complementary

The Complementary color scheme is a pair of colors which are on the opposite of each other on the color wheel.



12815213



7185859

# Split Complementary

Split-complementary colors differ from the complementary color scheme. The scheme consists of three colors, the original color and two neighbors of the complement color.



7052492



12815213



3974829

# Square

The Square scheme is like the rectangle color scheme, but the four colors are evenly spaced on the color wheel.



12815213



7644023



4563650



11897271

# Rectangle

The Rectangle color scheme consists of four colors that form a rectangle on the color wheel.



12815213



10328675



4563650



8885963

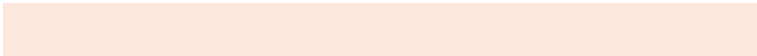


# Sweetspot

The Sweet Spot groups the original color and five complimentary colors.



12815213



16574428



12807590



8417899



0



8421504



# Same Dimension

The Same Dimension uses a secret algorithm to generate beautiful new colors.



12815213



16557431



12825965



6380375



10565632



2165760



# Inverse Universe

The Inverse Universe completely reimagines the original color for something new.



7185859



7851772



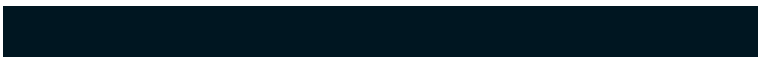
7175107



5725793



27041



5665



# Previews

## White Background



This preview shows how the Decimal color 12815213 looks on a white background.

## Color Contrast Check

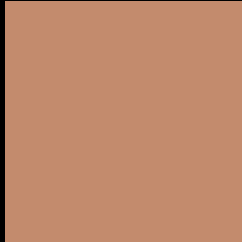
Large Text (above 18pt) WCAG AA × Fail

Any Text WCAG AA × Fail

Large Text (above 18pt) WCAG AAA × Fail

Any Text WCAG AAA × Fail

# Black Background



This preview shows how the Decimal color 12815213 looks on a black background.

## Color Contrast Check

Large Text (above 18pt) WCAG AA ✓ Pass

Any Text WCAG AA ✓ Pass

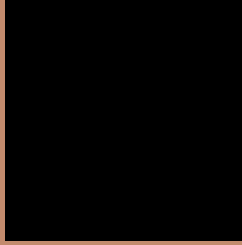
Large Text (above 18pt) WCAG AAA ✓ Pass

Any Text WCAG AAA ✓ Pass

If you want to check with other color combinations, try the [Color Contrast Checker](#).



## Decimal 12815213 Background



This preview shows how black text looks on a background with the Decimal color 12815213.



This preview shows how white text looks on a background with the Decimal color 12815213.

# Color Blindness Simulation

Color vision deficiency is a very complex topic, and I could not describe the different causes any better than Wikipedia does, so if you want to learn more, you should check out their [article about color blindness](#).

## Dichromacy



**Original Color**  
12815213

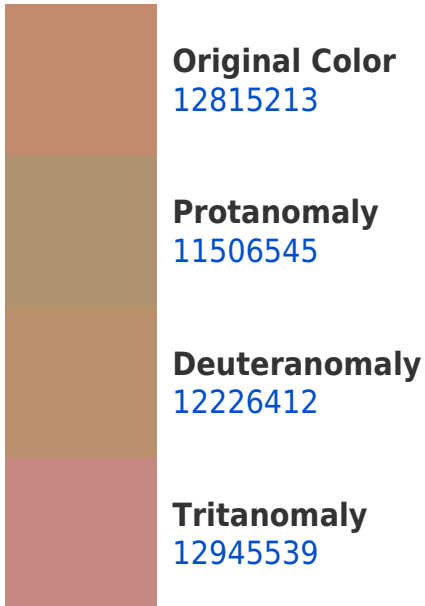
**Protanopia**  
10721395

**Deuteranopia**  
11899244



**Tritanopia**  
13010576

# Trichromacy



# Monochromacy



# CSS Examples

## Text

The CSS property to change the color of the text to Decimal 12815213 is called "color". The color property can be set on classes, ids or directly on the HTML element.

This example shows how text in the color #C38B6D looks like.

```
.text, #text, p{  
  color:#C38B6D  
}
```

If you want to add a text shadow in that color use the text-shadow property, you can generate a text shadow directly with our [CSS Text Shadow Generator](#).

Here you see how black text with a 4 pixel #C38B6D colored shadow looks like.

```
.shadow{ text-shadow: 4px 4px 2px #C38B6D
}
```

## Border

The CSS property to change the border of an element to Decimal 12815213 is called "border". The border property can be set on classes, ids or directly on the HTML element.

This example shows the color as border, it can be applied via the CSS property "border" or "border-color".

```
.border, #border, table{ border:4px solid
#C38B6D }
```

If only the border color should be changed use the property `border-color`.

```
.border{ border-color:#C38B6D }
```

If you want to add a box shadow in that color use:

Here you see how a box with a 4 pixel #C38B6D colored shadow looks like.

```
.boxshadow{ -moz-box-shadow:4px 4px 4px  
4px #C38B6D; -webkit-box-shadow:4px 4px  
4px 4px #C38B6D; box-shadow:4px 4px 4px  
4px #C38B6D }
```

# Background

The CSS property to change the background color of an element to Decimal 12815213 is called "background". The background property can be set on classes, ids or directly on the HTML element.

```
.background, #background, body{  
background:#C38B6D }
```

If only the background color should be changed can be used:

```
.background{ background-color:#C38B6D }
```

This example shows the color as background, it is applied via the CSS property "background".

To optimize and compress your CSS code, you can use our [online CSS compressor and optimizer](#) based on csstidy. If you want to create a linear or radial gradient as background or border, check our [CSS Gradient Generator](#).



Hey! You found this booklet interesting? Support Converting Colors with the new Membership Option!

The pro membership hides all ads, plus gives you double the colors in the color bucket, and more awesome pro features!

**[Learn more, Memberships starting at \\$2.50/m!](#)**

**Follow me  
on Twitter!**

@ConvertingColor