

Converting Colors

Decimal(12816250)

Have a look what the booklet for
Decimal(12816250) contains.

Decimal(12816250)	3
<i>Conversions</i>	4
<i>Details</i>	6
<i>Harmonies</i>	11
<i>Previews</i>	23
<i>Color Blindness Simulation</i>	26
<i>CSS Examples</i>	29

Color

Decimal(12816250)

Conversions

Conversions Part 1

Format	Color
Hex	C38F7A
RGB	195, 143, 122
RGB Percent	76%, 56%, 48%
CMY	0.2353, 0.4392, 0.5216
CMYK	0.00, 0.27, 0.37, 0.24
HSL	17°, 38%, 62%
HSV	17°, 37%, 76%
XYZ	35.8410, 32.6522, 22.8258
YIQ	156.1540, 37.7330, 4.4930

Conversions

Conversions Part 2

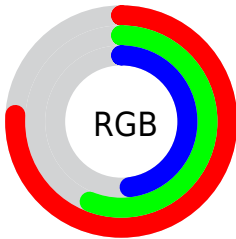
Format	Color
R_{YB}	195, 151, 122
Decimal	12816250
CIE _{Lab}	63.88, 16.93, 18.91
CIE _{LCh}	64, 25.380, 48.169
Yxy	32.6522, 0.3925, 0.3576
Android (android.graphics.Color)	4291006330 (0xFFC38F7A)
YUV	156.1540, -16.8379, 34.0679
Hunter-Lab	57.1421, 11.9612, 16.3156

Details

The Decimal color **12816250** is a light color, and the websafe version is hex **CC9999**. A complement of this color would be **8040131**, and the grayscale version is **10263708**.

A 20% lighter version of the original color is **16631214**, and **9198665** is the 20% darker color. If you saturate the color by 10%, you get **12812647**, and if you desaturate by 10%, it is **12819854**.

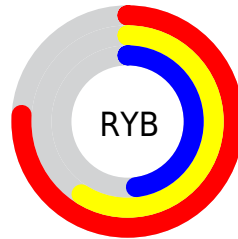
Distribution



Red (76%)

Green (56%)

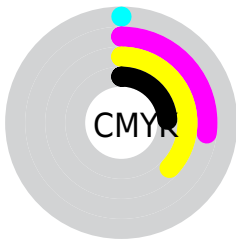
Blue (48%)



Red (76%)

Yellow (59%)

Blue (48%)

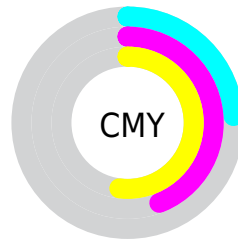


Cyan (0%)

Magenta (27%)

Yellow (37%)

Black (24%)



Cyan (24%)

Magenta (44%)

Yellow (52%)

Brightness & Saturation Gradients

These gradients show how the Decimal color 12816250 changes by changing the brightness by 10 percent. The first figure shows a shift by +10% for each color and the second figure -10%.

Similar to the brightness gradients but the following saturation gradients show a change of the Decimal color 12816250 by changing the saturation by 10% instead.

 12816250

 12816250

16777215

 10974561

 16631214

 9198665

 16769482

 7423283

 16776934

 5713437

 4069381

 2555904

 0

 12816250

 12816250

 12812647

 12819854

 12809043

 12823457

 12805440

 12827061

 12801836

 12830664

 12798488

 12834011

 12794885

 12837615

 12793856

 12841215

 12844799

 12845055

Harmonies

Analogous

The Analogous color harmony consists of three colors that are next to each other on the color wheel.



13208462



12816250



11769455

Triad

The Triadic color harmony groups three colors that are evenly spaced from another and form a triangle on the color wheel.



12816250



6989713



9607366

Complementary

The Complementary color scheme is a pair of colors which are on the opposite of each other on the color wheel.



12816250



8040131

Split Complementary

Split-complementary colors differ from the complementary color scheme. The scheme consists of three colors, the original color and two neighbors of the complement color.



7512263



12816250



5810088

Square

The Square scheme is like the rectangle color scheme, but the four colors are evenly spaced on the color wheel.



12816250



8627068



5940668



11505849

Rectangle

The Rectangle color scheme consists of four colors that form a rectangle on the color wheel.



12816250



10853230



5940668



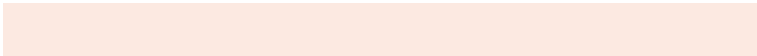
8887239

Sweetspot

The Sweet Spot groups the original color and five complimentary colors.



12816250



16574945



12810926



8418415



0



8421504

Same Dimension

The Same Dimension uses a secret algorithm to generate beautiful new colors.



12816250



16559243



12825466



6380119



10563072



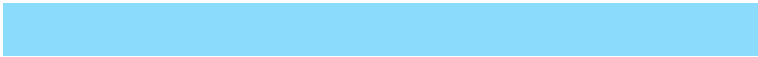
2165248

Inverse Universe

The Inverse Universe completely reimagines the original color for something new.



8040131



9166076



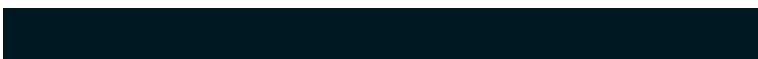
8030915



5725793



29345



6177

Previews

White Background



This preview shows how the Decimal color 12816250 looks on a white background.

Color Contrast Check

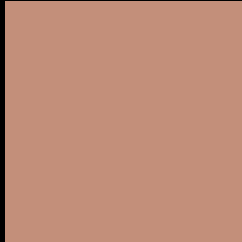
Large Text (above 18pt) WCAG AA × Fail

Any Text WCAG AA × Fail

Large Text (above 18pt) WCAG AAA × Fail

Any Text WCAG AAA × Fail

Black Background



This preview shows how the Decimal color 12816250 looks on a black background.

Color Contrast Check

Large Text (above 18pt) WCAG AA ✓ Pass

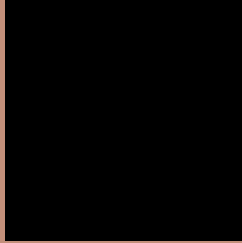
Any Text WCAG AA ✓ Pass

Large Text (above 18pt) WCAG AAA ✓ Pass

Any Text WCAG AAA ✓ Pass

If you want to check with other color combinations, try the [Color Contrast Checker](#).

Decimal 12816250 Background



This preview shows how black text looks on a background with the Decimal color 12816250.



This preview shows how white text looks on a background with the Decimal color 12816250.

Color Blindness Simulation

Color vision deficiency is a very complex topic, and I could not describe the different causes any better than Wikipedia does, so if you want to learn more, you should check out their [article about color blindness](#).

Dichromacy





Tritanopia
13011862

Trichromacy



Original Color
12816250

Protanomaly
11507582

Deuteranomaly
12292985

Tritanomaly
12946572

Monochromacy



Original Color
12816250

Achromatopsia
10263708

Achromatomaly
11179920

CSS Examples

Text

The CSS property to change the color of the text to Decimal 12816250 is called "color". The color property can be set on classes, ids or directly on the HTML element.

This example shows how text in the color #C38F7A looks like.

```
.text, #text, p{  
    color:#C38F7A  
}
```

If you want to add a text shadow in that color use the text-shadow property, you can generate a text shadow directly with our [CSS Text Shadow Generator](#).

Here you see how black text with a 4 pixel #C38F7A colored shadow looks like.

```
.shadow{ text-shadow: 4px 4px 2px #C38F7A
}
```

Border

The CSS property to change the border of an element to Decimal 12816250 is called "border". The border property can be set on classes, ids or directly on the HTML element.

This example shows the color as border, it can be applied via the CSS property "border" or "border-color".

```
.border, #border, table{ border:4px solid
#C38F7A }
```

If only the border color should be changed use the property `border-color`.

```
.border{ border-color:#C38F7A }
```

If you want to add a box shadow in that color use:

Here you see how a box with a 4 pixel #C38F7A colored shadow looks like.

```
.boxshadow{ -moz-box-shadow:4px 4px 4px  
4px #C38F7A; -webkit-box-shadow:4px 4px  
4px 4px #C38F7A; box-shadow:4px 4px 4px  
4px #C38F7A }
```

Background

The CSS property to change the background color of an element to Decimal 12816250 is called "background". The background property can be set on classes, ids or directly on the HTML element.

```
.background, #background, body{  
background:#C38F7A }
```

If only the background color should be changed can be used:

```
.background{ background-color:#C38F7A }
```

This example shows the color as background, it is applied via the CSS property "background".

To optimize and compress your CSS code, you can use our [online CSS compressor and optimizer](#) based on csstidy. If you want to create a linear or radial gradient as background or border, check our [CSS Gradient Generator](#).

Hey! You found this booklet interesting? Support Converting Colors with the new Membership Option!

The pro membership hides all ads, plus gives you double the colors in the color bucket, and more awesome pro features!

[Learn more, Memberships starting at \\$2.50/m!](#)

**Follow me
on Twitter!**

@ConvertingColor