

Converting Colors

Decimal(12816487)

Have a look what the booklet for
Decimal(12816487) contains.

Decimal(12816487)	3
<i>Conversions</i>	4
<i>Details</i>	6
<i>Harmonies</i>	11
<i>Previews</i>	23
<i>Color Blindness Simulation</i>	26
<i>CSS Examples</i>	29

Color

Decimal(12816487)

Conversions

Conversions Part 1

Format	Color
Hex	C39067
RGB	195, 144, 103
RGB Percent	76%, 56%, 40%
CMY	0.2353, 0.4353, 0.5961
CMYK	0.00, 0.26, 0.47, 0.24
HSL	27°, 43%, 58%
HSV	27°, 47%, 76%
XYZ	34.9271, 32.5279, 17.2696
YIQ	154.5750, 43.5570, -1.9390

Conversions

Conversions Part 2

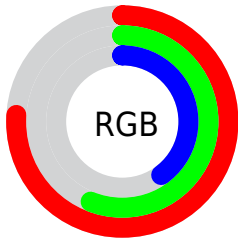
Format	Color
RYB	195, 177, 103
Decimal	12816487
CIELab	63.78, 14.27, 29.29
CIELCh	64, 32.576, 64.025
Yxy	32.5279, 0.4122, 0.3839
Android (android.graphics.Color)	4291006567 (0xFFC39067)
YUV	154.5750, -25.4265, 35.4527
Hunter-Lab	57.0332, 9.5051, 21.9703

Details

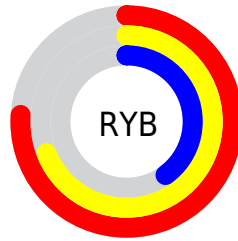
The Decimal color **12816487** is a light color, and the websafe version is hex **CC9966**. A complement of this color would be **6789827**, and the grayscale version is **10197915**.

A 20% lighter version of the original color is **16631451**, and **9133623** is the 20% darker color. If you saturate the color by 10%, you get **12813652**, and if you desaturate by 10%, it is **12819322**.

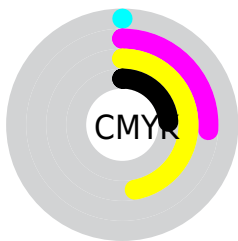
Distribution



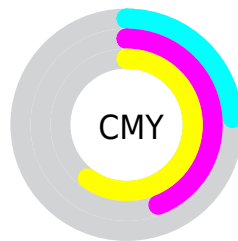
- Red (76%)
- Green (56%)
- Blue (40%)



- Red (76%)
- Yellow (69%)
- Blue (40%)



- Cyan (0%)
- Magenta (26%)
- Yellow (47%)
- Black (24%)



- Cyan (24%)
- Magenta (44%)
- Yellow (60%)

Brightness & Saturation Gradients

These gradients show how the Decimal color 12816487 changes by changing the brightness by 10 percent. The first figure shows a shift by +10% for each color and the second figure -10%.

Similar to the brightness gradients but the following saturation gradients show a change of the Decimal color 12816487 by changing the saturation by 10% instead.

 12816487

 12816487

16777215

 10974799

 16631451

 9133623

 16769718

 7357985

 16777169

 5582602

 16777198

 3938816

 2359808

 0

 12816487

 12816487

 12813652

 12819322

 12810816

 12822158

 12808236

 12824738

 12805401

 12827573

 12802566

 12830409

 12801792

 12833244

 12836080

 12838655

 12841471

Harmonies

Analogous

The Analogous color harmony consists of three colors that are next to each other on the color wheel.



13797243



12816487



11180640

Triad

The Triadic color harmony groups three colors that are evenly spaced from another and form a triangle on the color wheel.



12816487



4500126



10719947

Complementary

The Complementary color scheme is a pair of colors which are on the opposite of each other on the color wheel.



12816487



6789827

Split Complementary

Split-complementary colors differ from the complementary color scheme. The scheme consists of three colors, the original color and two neighbors of the complement color.



7904468



12816487



3058106

Square

The Square scheme is like the rectangle color scheme, but the four colors are evenly spaced on the color wheel.



12816487



6924416



4826318



12814516

Rectangle

The Rectangle color scheme consists of four colors that form a rectangle on the color wheel.



12816487



9871461



4826318



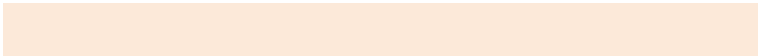
9868751

Sweetspot

The Sweet Spot groups the original color and five complimentary colors.



12816487



16574937



12806043



8418154



0



8421504

Same Dimension

The Same Dimension uses a secret algorithm to generate beautiful new colors.



12816487



16559469



12828007



6380631



10569728



2166528

Inverse Universe

The Inverse Universe completely reimagines the original color for something new.



6789827



7191804



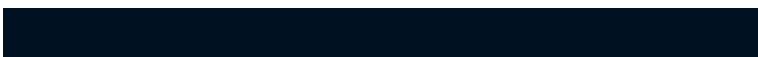
6778307



5725537



22945



4641

Previews

White Background



This preview shows how the Decimal color 12816487 looks on a white background.

Color Contrast Check

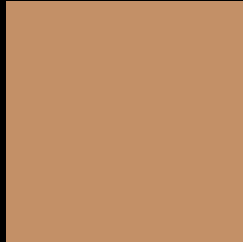
Large Text (above 18pt) WCAG AA × Fail

Any Text WCAG AA × Fail

Large Text (above 18pt) WCAG AAA × Fail

Any Text WCAG AAA × Fail

Black Background



This preview shows how the Decimal color 12816487 looks on a black background.

Color Contrast Check

Large Text (above 18pt) WCAG AA ✓ Pass

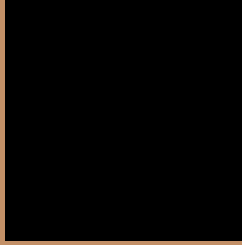
Any Text WCAG AA ✓ Pass

Large Text (above 18pt) WCAG AAA ✓ Pass

Any Text WCAG AAA ✓ Pass

If you want to check with other color combinations, try the [Color Contrast Checker](#).

Decimal 12816487 Background



This preview shows how black text looks on a background with the Decimal color 12816487.



This preview shows how white text looks on a background with the Decimal color 12816487.

Color Blindness Simulation

Color vision deficiency is a very complex topic, and I could not describe the different causes any better than Wikipedia does, so if you want to learn more, you should check out their [article about color blindness](#).

Dichromacy



Original Color
12816487

Protanopia
10984299

Deuteranopia
12227686



Tritanopia
13077141

Trichromacy



Original Color
12816487

Protanomaly
11638634

Deuteranomaly
12424038

Tritanomaly
13012100

Monochromacy



Original Color
12816487

Achromatopsia
10197915

Achromatomaly
11179912

CSS Examples

Text

The CSS property to change the color of the text to Decimal 12816487 is called "color". The color property can be set on classes, ids or directly on the HTML element.

This example shows how text in the color #C39067 looks like.

```
.text, #text, p{  
  color:#C39067  
}
```

If you want to add a text shadow in that color use the text-shadow property, you can generate a text shadow directly with our [CSS Text Shadow Generator](#).

Here you see how black text with a 4 pixel #C39067 colored shadow looks like.

```
.shadow{ text-shadow: 4px 4px 2px #C39067
}
```

Border

The CSS property to change the border of an element to Decimal 12816487 is called "border". The border property can be set on classes, ids or directly on the HTML element.

This example shows the color as border, it can be applied via the CSS property "border" or "border-color".

```
.border, #border, table{ border:4px solid
#C39067 }
```

If only the border color should be changed use the property `border-color`.

```
.border{ border-color:#C39067 }
```

If you want to add a box shadow in that color use:

Here you see how a box with a 4 pixel #C39067 colored shadow looks like.

```
.boxshadow{ -moz-box-shadow:4px 4px 4px  
4px #C39067; -webkit-box-shadow:4px 4px  
4px 4px #C39067; box-shadow:4px 4px 4px  
4px #C39067 }
```

Background

The CSS property to change the background color of an element to Decimal 12816487 is called "background". The background property can be set on classes, ids or directly on the HTML element.

```
.background, #background, body{  
background:#C39067 }
```

If only the background color should be changed can be used:

```
.background{ background-color:#C39067 }
```

This example shows the color as background, it is applied via the CSS property "background".

To optimize and compress your CSS code, you can use our [online CSS compressor and optimizer](#) based on csstidy. If you want to create a linear or radial gradient as background or border, check our [CSS Gradient Generator](#).

Hey! You found this booklet interesting? Support Converting Colors with the new Membership Option!

The pro membership hides all ads, plus gives you double the colors in the color bucket, and more awesome pro features!

[Learn more, Memberships starting at \\$2.50/m!](#)

**Follow me
on Twitter!**

@ConvertingColor