

Converting Colors

Decimal(12816786)

Have a look what the booklet for
Decimal(12816786) contains.

Decimal(12816786)	3
<i>Conversions</i>	4
<i>Details</i>	6
<i>Harmonies</i>	11
<i>Previews</i>	23
<i>Color Blindness Simulation</i>	26
<i>CSS Examples</i>	29

Color

Decimal(12816786)

Conversions

Conversions Part 1

Format	Color
Hex	C39192
RGB	195, 145, 146
RGB Percent	76%, 57%, 57%
CMY	0.2353, 0.4314, 0.4275
CMYK	0.00, 0.26, 0.25, 0.24
HSL	359°, 29%, 67%
HSV	359°, 26%, 76%
XYZ	37.8194, 33.9282, 31.7496
YIQ	160.0640, 29.4790, 10.9110

Conversions

Conversions Part 2

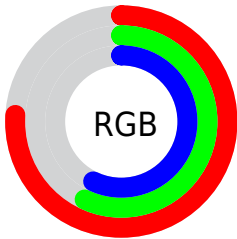
Format	Color
RYB	195, 145, 146
Decimal	12816786
CIELab	64.91, 19.03, 6.87
CIELCh	65, 20.229, 19.848
Yxy	33.9282, 0.3654, 0.3278
Android (android.graphics.Color)	4291006866 (0xFFC39192)
YUV	160.0640, -6.9336, 30.6389
Hunter-Lab	58.2479, 13.9631, 8.4559

Details

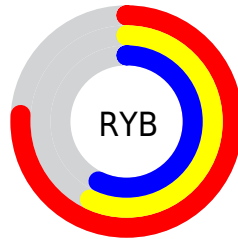
The Decimal color **12816786** is a light color, and the websafe version is hex **CC9999**. A complement of this color would be **9552834**, and the grayscale version is **10526880**.

A 20% lighter version of the original color is **16566216**, and **9199200** is the 20% darker color. If you saturate the color by 10%, you get **12811903**, and if you desaturate by 10%, it is **12821669**.

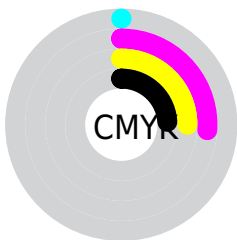
Distribution



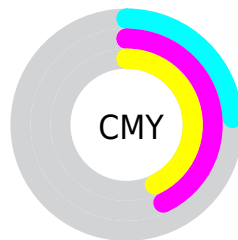
- Red (76%)
- Green (57%)
- Blue (57%)



- Red (76%)
- Yellow (57%)
- Blue (57%)



- Cyan (0%)
- Magenta (26%)
- Yellow (25%)
- Black (24%)



- Cyan (24%)
- Magenta (43%)
- Yellow (43%)

Brightness & Saturation Gradients

These gradients show how the Decimal color 12816786 changes by changing the brightness by 10 percent. The first figure shows a shift by +10% for each color and the second figure -10%.

Similar to the brightness gradients but the following saturation gradients show a change of the Decimal color 12816786 by changing the saturation by 10% instead.

 12816786

 12816786


16777215

 10975096

 16566216

 9199200

 16770020

 7489096

 5844786

 4200989

 2753026

 0

 12816786

 12816786

 12811903

 12821669

 12806764

 12826808

 12801881

 12831947

 12796742

 12836830

 12791858

 12841970

 12786719

 12845055

 12781836

 12779524

Harmonies

Analogous

The Analogous color harmony consists of three colors that are next to each other on the color wheel.



12489124



12816786



12490115

Triad

The Triadic color harmony groups three colors that are evenly spaced from another and form a triangle on the color wheel.



12816786



9086342



8430017

Complementary

The Complementary color scheme is a pair of colors which are on the opposite of each other on the color wheel.



12816786



9552834

Split Complementary

Split-complementary colors differ from the complementary color scheme. The scheme consists of three colors, the original color and two neighbors of the complement color.



7316920



12816786



7841686

Square

The Square scheme is like the rectangle color scheme, but the four colors are evenly spaced on the color wheel.



12816786



10461307



7121065



10001343

Rectangle

The Rectangle color scheme consists of four colors that form a rectangle on the color wheel.



12816786



11966588



7121065



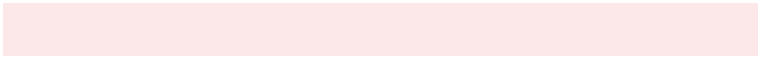
7971775

Sweetspot

The Sweet Spot groups the original color and five complimentary colors.



12816786



16574697



12685763



8418163



0



8421504

Same Dimension

The Same Dimension uses a secret algorithm to generate beautiful new colors.



12816786



16559792



12822673



6379351



10551299



2162689

Inverse Universe

The Inverse Universe completely reimagines the original color for something new.



12816786



16559792



9546947



6379351



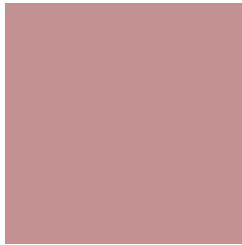
10551299



2162689

Previews

White Background



This preview shows how the Decimal color 12816786 looks on a white background.

Color Contrast Check

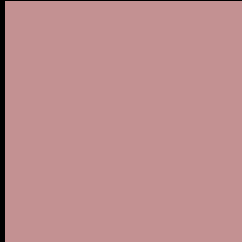
Large Text (above 18pt) WCAG AA × Fail

Any Text WCAG AA × Fail

Large Text (above 18pt) WCAG AAA × Fail

Any Text WCAG AAA × Fail

Black Background



This preview shows how the Decimal color 12816786 looks on a black background.

Color Contrast Check

Large Text (above 18pt) WCAG AA ✓ Pass

Any Text WCAG AA ✓ Pass

Large Text (above 18pt) WCAG AAA ✓ Pass

Any Text WCAG AAA ✓ Pass

If you want to check with other color combinations, try the [Color Contrast Checker](#).

Decimal 12816786 Background



This preview shows how black text looks on a background with the Decimal color 12816786.



This preview shows how white text looks on a background with the Decimal color 12816786.

Color Blindness Simulation

Color vision deficiency is a very complex topic, and I could not describe the different causes any better than Wikipedia does, so if you want to learn more, you should check out their [article about color blindness](#).

Dichromacy



Original Color
12816786

Protanopia
10657177

Deuteranopia
11704465



Tritanopia
12882075

Trichromacy



Original Color
12816786

Protanomaly
11442582

Deuteranomaly
12096913

Tritanomaly
12882072

Monochromacy



Original Color
12816786

Achromatopsia
10526880

Achromatomaly
11377563

CSS Examples

Text

The CSS property to change the color of the text to Decimal 12816786 is called "color". The color property can be set on classes, ids or directly on the HTML element.

This example shows how text in the color #C39192 looks like.

```
.text, #text, p{  
  color:#C39192  
}
```

If you want to add a text shadow in that color use the text-shadow property, you can generate a text shadow directly with our [CSS Text Shadow Generator](#).

Here you see how black text with a 4 pixel #C39192 colored shadow looks like.

```
.shadow{ text-shadow: 4px 4px 2px #C39192
}
```

Border

The CSS property to change the border of an element to Decimal 12816786 is called "border". The border property can be set on classes, ids or directly on the HTML element.

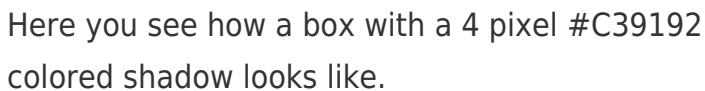
This example shows the color as border, it can be applied via the CSS property "border" or "border-color".

```
.border, #border, table{ border:4px solid
#C39192 }
```

If only the border color should be changed use the property `border-color`.

```
.border{ border-color:#C39192 }
```

If you want to add a box shadow in that color use:



Here you see how a box with a 4 pixel #C39192 colored shadow looks like.

```
.boxshadow{ -moz-box-shadow:4px 4px 4px  
4px #C39192; -webkit-box-shadow:4px 4px  
4px 4px #C39192; box-shadow:4px 4px 4px  
4px #C39192 }
```

Background

The CSS property to change the background color of an element to Decimal 12816786 is called "background". The background property can be set on classes, ids or directly on the HTML element.

```
.background, #background, body{  
background:#C39192 }
```

If only the background color should be changed can be used:

```
.background{ background-color:#C39192 }
```

This example shows the color as background, it is applied via the CSS property "background".

To optimize and compress your CSS code, you can use our [online CSS compressor and optimizer](#) based on csstidy. If you want to create a linear or radial gradient as background or border, check our [CSS Gradient Generator](#).

Hey! You found this booklet interesting? Support Converting Colors with the new Membership Option!

The pro membership hides all ads, plus gives you double the colors in the color bucket, and more awesome pro features!

[Learn more, Memberships starting at \\$2.50/m!](#)

**Follow me
on Twitter!**

@ConvertingColor