

Converting Colors

Decimal(12819058)

Have a look what the booklet for
Decimal(12819058) contains.

Decimal(12819058)	3
<i>Conversions</i>	4
<i>Details</i>	6
<i>Harmonies</i>	11
<i>Previews</i>	23
<i>Color Blindness Simulation</i>	26
<i>CSS Examples</i>	29

Color

Decimal(12819058)

Conversions

Conversions Part 1

Format	Color
Hex	C39A72
RGB	195, 154, 114
RGB Percent	76%, 60%, 45%
CMY	0.2353, 0.3961, 0.5529
CMYK	0.00, 0.21, 0.42, 0.24
HSL	30°, 40%, 61%
HSV	30°, 42%, 76%
XYZ	37.0985, 35.9282, 20.8991
YIQ	161.6990, 37.2760, -3.7480

Conversions

Conversions Part 2

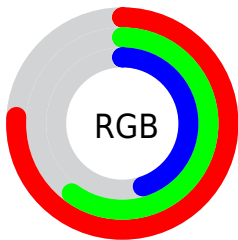
Format	Color
RYB	195, 193, 114
Decimal	12819058
CIELab	66.47, 9.95, 26.81
CIELCh	66, 28.601, 69.634
Yxy	35.9282, 0.3950, 0.3825
Android (android.graphics.Color)	4291009138 (0xFFC39A72)
YUV	161.6990, -23.5156, 29.2050
Hunter-Lab	59.9401, 5.5831, 21.2857

Details

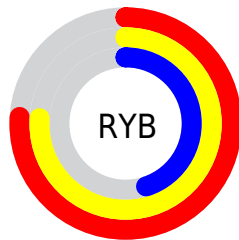
The Decimal color **12819058** is a light color, and the websafe version is hex **CC9966**. A complement of this color would be **7510979**, and the grayscale version is **10658466**.

A 20% lighter version of the original color is **16634022**, and **9201473** is the 20% darker color. If you saturate the color by 10%, you get **12816479**, and if you desaturate by 10%, it is **12821638**.

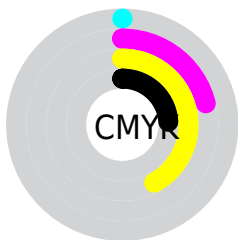
Distribution



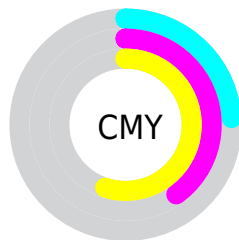
- Red (76%)
- Green (60%)
- Blue (45%)



- Red (76%)
- Yellow (76%)
- Blue (45%)



- Cyan (0%)
- Magenta (21%)
- Yellow (42%)
- Black (24%)



- Cyan (24%)
- Magenta (40%)
- Yellow (55%)

Brightness & Saturation Gradients

These gradients show how the Decimal color 12819058 changes by changing the brightness by 10 percent. The first figure shows a shift by +10% for each color and the second figure -10%.

Similar to the brightness gradients but the following saturation gradients show a change of the Decimal color 12819058 by changing the saturation by 10% instead.

 12819058

 12819058

16777215

 10977369

 16634022

 9201473

 16772546

 7425835

 16777182

 5715989

 16777210

 4071936

 2493952

 0

 12819058

 12819058

 12816479

 12821638

 12813899

 12824217

 12811320

 12826797

 12808996

 12829120

 12806417

 12831700

 12804096

 12834279

 12836859

 12839423

 12841983

Harmonies

Analogous

The Analogous color harmony consists of three colors that are next to each other on the color wheel.



13800066



12819058



11248495

Triad

The Triadic color harmony groups three colors that are evenly spaced from another and form a triangle on the color wheel.



12819058



5746857



11573449

Complementary

The Complementary color scheme is a pair of colors which are on the opposite of each other on the color wheel.



12819058



7510979

Split Complementary

Split-complementary colors differ from the complementary color scheme. The scheme consists of three colors, the original color and two neighbors of the complement color.



9216468



12819058



5287617

Square

The Square scheme is like the rectangle color scheme, but the four colors are evenly spaced on the color wheel.



12819058



7450255



6793681



13210036

Rectangle

The Rectangle color scheme consists of four colors that form a rectangle on the color wheel.



12819058



10070132



6793681



10853326

Sweetspot

The Sweet Spot groups the original color and five complimentary colors.



12819058



16575966



12808860



8418926



0



8421504

Same Dimension

The Same Dimension uses a secret algorithm to generate beautiful new colors.



12819058



16563582



12829298



6380631



10571520



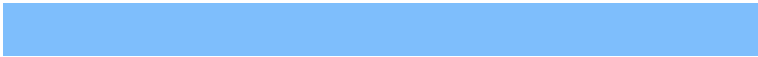
2166784

Inverse Universe

The Inverse Universe completely reimagines the original color for something new.



7510979



8306428



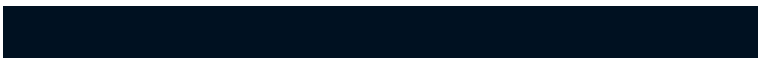
7500739



5725281



20897



4385

Previews

White Background



This preview shows how the Decimal color 12819058 looks on a white background.

Color Contrast Check

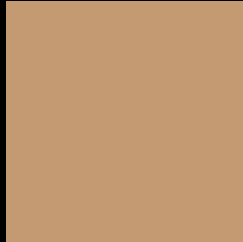
Large Text (above 18pt) WCAG AA × Fail

Any Text WCAG AA × Fail

Large Text (above 18pt) WCAG AAA × Fail

Any Text WCAG AAA × Fail

Black Background



This preview shows how the Decimal color 12819058 looks on a black background.

Color Contrast Check

Large Text (above 18pt) WCAG AA ✓ Pass

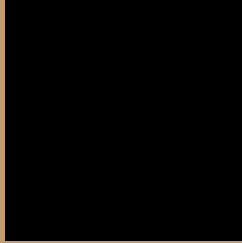
Any Text WCAG AA ✓ Pass

Large Text (above 18pt) WCAG AAA ✓ Pass

Any Text WCAG AAA ✓ Pass

If you want to check with other color combinations, try the [Color Contrast Checker](#).

Decimal 12819058 Background



This preview shows how black text looks on a background with the Decimal color 12819058.



This preview shows how white text looks on a background with the Decimal color 12819058.

Color Blindness Simulation

Color vision deficiency is a very complex topic, and I could not describe the different causes any better than Wikipedia does, so if you want to learn more, you should check out their [article about color blindness](#).

Dichromacy



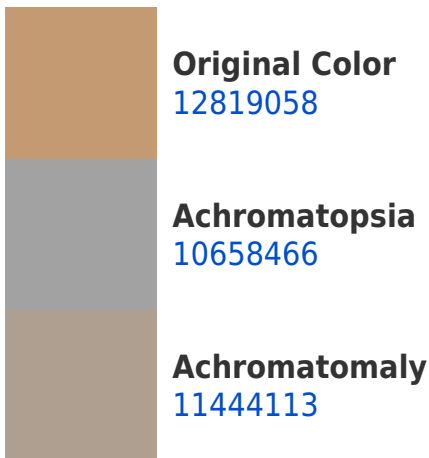


Tritanopia
13079711

Trichromacy



Monochromacy



CSS Examples

Text

The CSS property to change the color of the text to Decimal 12819058 is called "color". The color property can be set on classes, ids or directly on the HTML element.

This example shows how text in the color #C39A72 looks like.

```
.text, #text, p{  
    color:#C39A72  
}
```

If you want to add a text shadow in that color use the text-shadow property, you can generate a text shadow directly with our [CSS Text Shadow Generator](#).

Here you see how black text with a 4 pixel #C39A72 colored shadow looks like.

```
.shadow{ text-shadow: 4px 4px 2px #C39A72
}
```

Border

The CSS property to change the border of an element to Decimal 12819058 is called "border". The border property can be set on classes, ids or directly on the HTML element.

This example shows the color as border, it can be applied via the CSS property "border" or "border-color".

```
.border, #border, table{ border:4px solid
#C39A72 }
```

If only the border color should be changed use the property `border-color`.

```
.border{ border-color:#C39A72 }
```

If you want to add a box shadow in that color use:

Here you see how a box with a 4 pixel #C39A72 colored shadow looks like.

```
.boxshadow{ -moz-box-shadow:4px 4px 4px  
4px #C39A72; -webkit-box-shadow:4px 4px  
4px 4px #C39A72; box-shadow:4px 4px 4px  
4px #C39A72 }
```

Background

The CSS property to change the background color of an element to Decimal 12819058 is called "background". The background property can be set on classes, ids or directly on the HTML element.

```
.background, #background, body{  
background:#C39A72 }
```

If only the background color should be changed can be used:

```
.background{ background-color:#C39A72 }
```

This example shows the color as background, it is applied via the CSS property "background".

To optimize and compress your CSS code, you can use our [online CSS compressor and optimizer](#) based on csstidy. If you want to create a linear or radial gradient as background or border, check our [CSS Gradient Generator](#).

Hey! You found this booklet interesting? Support Converting Colors with the new Membership Option!

The pro membership hides all ads, plus gives you double the colors in the color bucket, and more awesome pro features!

[Learn more, Memberships starting at \\$2.50/m!](#)

**Follow me
on Twitter!**

@ConvertingColor