

# Converting Colors

Decimal(12819095)

Have a look what the booklet for  
Decimal(12819095) contains.

<b>Decimal(12819095)</b> .....	3
<i><b>Conversions</b></i> .....	4
<i><b>Details</b></i> .....	6
<i><b>Harmonies</b></i> .....	11
<i><b>Previews</b></i> .....	23
<i><b>Color Blindness Simulation</b></i> .....	26
<i><b>CSS Examples</b></i> .....	29

# **Color**

**Decimal(12819095)**

# Conversions

## Conversions Part 1

Format	Color
Hex	C39A97
RGB	195, 154, 151
RGB Percent	76%, 60%, 59%
CMY	0.2353, 0.3961, 0.4078
CMYK	0.00, 0.21, 0.23, 0.24
HSL	4°, 27%, 68%
HSV	4°, 23%, 76%
XYZ	39.6472, 36.9477, 34.3201
YIQ	165.9170, 25.3990, 7.7590

# Conversions

## Conversions Part 2

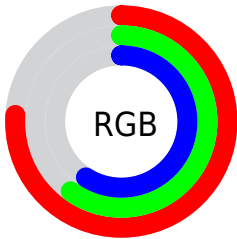
Format	Color
<a href="#">RYB</a>	<a href="#">195, 154, 151</a>
Decimal	<a href="#">12819095</a>
CIELab	<a href="#">67.24, 14.81, 7.40</a>
CIELCh	<a href="#">67, 16.553, 26.563</a>
Yxy	<a href="#">36.9477, 0.3575, 0.3331</a>
Android (android.graphics.Color)	<a href="#">4291009175</a> ( <a href="#">0xFFC39A97</a> )
YUV	<a href="#">165.9170, -7.3541, 25.5058</a>
Hunter-Lab	<a href="#">60.7846, 10.0549, 9.0730</a>

# Details

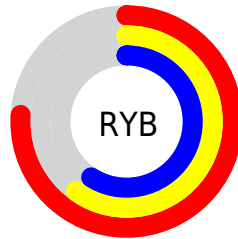
The Decimal color **12819095** is a light color, and the websafe version is hex **CC9999**. A complement of this color would be **9945283**, and the grayscale version is **10921638**.

A 20% lighter version of the original color is **16568781**, and **9267044** is the 20% darker color. If you saturate the color by 10%, you get **12814468**, and if you desaturate by 10%, it is **12823723**.

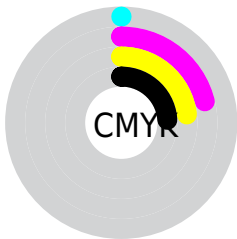
# Distribution



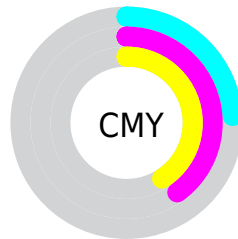
- Red (76%)
- Green (60%)
- Blue (59%)



- Red (76%)
- Yellow (60%)
- Blue (59%)



- Cyan (0%)
- Magenta (21%)
- Yellow (23%)
- Black (24%)



- Cyan (24%)
- Magenta (40%)
- Yellow (41%)

# Brightness & Saturation Gradients

These gradients show how the Decimal color 12819095 changes by changing the brightness by 10 percent. The first figure shows a shift by +10% for each color and the second figure -10%.

Similar to the brightness gradients but the following saturation gradients show a change of the Decimal color 12819095 by changing the saturation by 10% instead.



 12819095

 12819095

16777215

 10977405

 16568781

 9267044

 16772585

 7491404

 5846838

 4268576

 2755849

 524288

 0

 12819095

 12819095

 12814468

 12823723

 12809840

 12828350

 12804957

 12833233

 12800329

 12837861

 12795702

 12842489

 12791074

 12845055

 12786447

 12782848

# Harmonies

## Analogous

The Analogous color harmony consists of three colors that are next to each other on the color wheel.



12622246



12819095



12426635

# Triad

The Triadic color harmony groups three colors that are evenly spaced from another and form a triangle on the color wheel.



12819095



9480851



9545153

# Complementary

The Complementary color scheme is a pair of colors which are on the opposite of each other on the color wheel.



12819095



9945283

# Split Complementary

Split-complementary colors differ from the complementary color scheme. The scheme consists of three colors, the original color and two neighbors of the complement color.



8497852



12819095



8563873

# Square

The Square scheme is like the rectangle color scheme, but the four colors are evenly spaced on the color wheel.



12819095



10594185



8170672



10789054

# Rectangle

The Rectangle color scheme consists of four colors that form a rectangle on the color wheel.



12819095



11968647



8170672



9152448

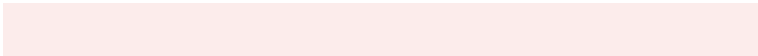


# Sweetspot

The Sweet Spot groups the original color and five complimentary colors.



12819095



16575723



12818368



8418933



0



8421504



# Same Dimension

The Same Dimension uses a secret algorithm to generate beautiful new colors.



12819095



16563640



12824727



6379607



10554112



2163200



# Inverse Universe

The Inverse Universe completely reimagines the original color for something new.



9945283



12122364



9939651



5726305



38561

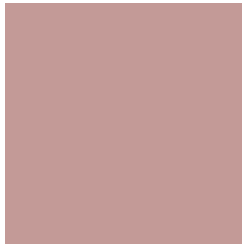


7969



# Previews

## White Background



This preview shows how the Decimal color 12819095 looks on a white background.

## Color Contrast Check

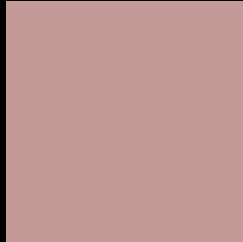
Large Text (above 18pt) WCAG AA × Fail

Any Text WCAG AA × Fail

Large Text (above 18pt) WCAG AAA × Fail

Any Text WCAG AAA × Fail

# Black Background



This preview shows how the Decimal color 12819095 looks on a black background.

## Color Contrast Check

Large Text (above 18pt) WCAG AA ✓ Pass

Any Text WCAG AA ✓ Pass

Large Text (above 18pt) WCAG AAA ✓ Pass

Any Text WCAG AAA ✓ Pass

If you want to check with other color combinations, try the [Color Contrast Checker](#).



## Decimal 12819095 Background



This preview shows how black text looks on a background with the Decimal color 12819095.

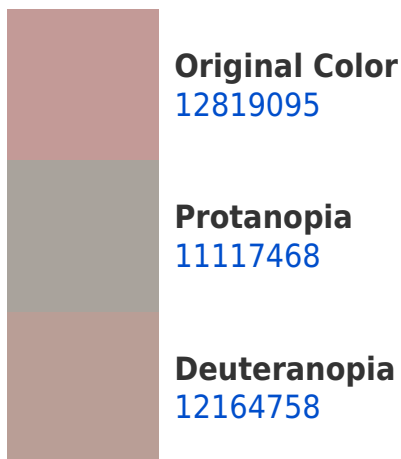



This preview shows how white text looks on a background with the Decimal color 12819095.

# Color Blindness Simulation

Color vision deficiency is a very complex topic, and I could not describe the different causes any better than Wikipedia does, so if you want to learn more, you should check out their [article about color blindness](#).

## Dichromacy





**Tritanopia**  
12884132

# Trichromacy



**Original Color**  
12819095

**Protanomaly**  
11706522

**Deuteranomaly**  
12426646

**Tritanomaly**  
12884383

# Monochromacy



**Original Color**  
12819095

**Achromatopsia**  
10921638

**Achromatomaly**  
11641505

# CSS Examples

## Text

The CSS property to change the color of the text to Decimal 12819095 is called "color". The color property can be set on classes, ids or directly on the HTML element.

This example shows how text in the color #C39A97 looks like.

```
.text, #text, p{  
    color:#C39A97  
}
```

If you want to add a text shadow in that color use the text-shadow property, you can generate a text shadow directly with our [CSS Text Shadow Generator](#).

Here you see how black text with a 4 pixel #C39A97 colored shadow looks like.

```
.shadow{ text-shadow: 4px 4px 2px #C39A97
}
```

## Border

The CSS property to change the border of an element to Decimal 12819095 is called "border". The border property can be set on classes, ids or directly on the HTML element.

This example shows the color as border, it can be applied via the CSS property "border" or "border-color".

```
.border, #border, table{ border:4px solid
#C39A97 }
```

If only the border color should be changed use the property `border-color`.

```
.border{ border-color:#C39A97 }
```

If you want to add a box shadow in that color use:

Here you see how a box with a 4 pixel #C39A97 colored shadow looks like.

```
.boxshadow{ -moz-box-shadow:4px 4px 4px  
4px #C39A97; -webkit-box-shadow:4px 4px  
4px 4px #C39A97; box-shadow:4px 4px 4px  
4px #C39A97 }
```

# Background

The CSS property to change the background color of an element to Decimal 12819095 is called "background". The background property can be set on classes, ids or directly on the HTML element.

```
.background, #background, body{  
background:#C39A97 }
```

If only the background color should be changed can be used:

```
.background{ background-color:#C39A97 }
```

This example shows the color as background, it is applied via the CSS property "background".

To optimize and compress your CSS code, you can use our [online CSS compressor and optimizer](#) based on csstidy. If you want to create a linear or radial gradient as background or border, check our [CSS Gradient Generator](#).



Hey! You found this booklet interesting? Support Converting Colors with the new Membership Option!

The pro membership hides all ads, plus gives you double the colors in the color bucket, and more awesome pro features!

**[Learn more, Memberships starting at \\$2.50/m!](#)**

**Follow me  
on Twitter!**

@ConvertingColor