

Converting Colors

Decimal(12820899)

Have a look what the booklet for
Decimal(12820899) contains.

| | |
|--|----|
| Decimal(12820899) | 3 |
| <i>Conversions</i> | 4 |
| <i>Details</i> | 6 |
| <i>Harmonies</i> | 11 |
| <i>Previews</i> | 23 |
| <i>Color Blindness Simulation</i> | 26 |
| <i>CSS Examples</i> | 29 |

Color

Decimal(12820899)

Conversions

Conversions Part 1

| Format | Color |
|-------------|---------------------------|
| Hex | C3A1A3 |
| RGB | 195, 161, 163 |
| RGB Percent | 76%, 63%, 64% |
| CMY | 0.2353, 0.3686, 0.3608 |
| CMYK | 0.00, 0.17, 0.16, 0.24 |
| HSL | 356°, 22%, 70% |
| HSV | 356°, 17%, 76% |
| XYZ | 41.8614, 39.7362, 40.1138 |
| YIQ | 171.3940, 19.6220, 7.8300 |

Conversions

Conversions Part 2

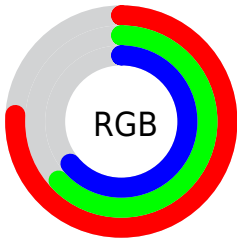
| Format | Color |
|-------------------------------------|-------------------------------|
| R_{YB} | 195, 161, 163 |
| Decimal | 12820899 |
| CIE _{Lab} | 69.28, 12.83, 3.66 |
| CIE _{LCh} | 69, 13.339, 15.930 |
| Yxy | 39.7362, 0.3439, 0.3265 |
| Android (android.graphics.Color) | 4291010979 (0xFFC3A1A3) |
| YUV | 171.3940, -4.1382, 20.7025 |
| Hunter-Lab | 63.0366, 8.2242, 6.3960 |

Details

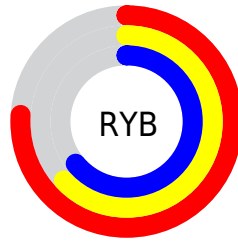
The Decimal color **12820899** is a light color, and the websafe version is hex **CC9999**. A complement of this color would be **10601409**, and the grayscale version is **11250603**.

A 20% lighter version of the original color is **16570586**, and **9268591** is the 20% darker color. If you saturate the color by 10%, you get **12816017**, and if you desaturate by 10%, it is **12826037**.

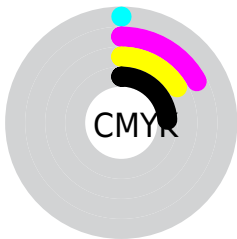
Distribution



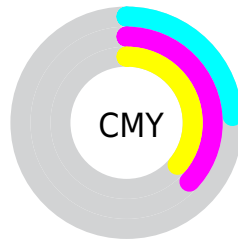
- Red (76%)
- Green (63%)
- Blue (64%)



- Red (76%)
- Yellow (63%)
- Blue (64%)



- Cyan (0%)
- Magenta (17%)
- Yellow (16%)
- Black (24%)



- Cyan (24%)
- Magenta (37%)
- Yellow (36%)

Brightness & Saturation Gradients

These gradients show how the Decimal color 12820899 changes by changing the brightness by 10 percent. The first figure shows a shift by +10% for each color and the second figure -10%.

Similar to the brightness gradients but the following saturation gradients show a change of the Decimal color 12820899 by changing the saturation by 10% instead.

 12820899

 12820899

16777215

 11044745

 16570586

 9268591

 16774390

 7558487

 5914176

 4335658

 2822934

 1376256

 0

 12820899

 12820899

 12816017

 12826037

 12810878

 12830920

 12805996

 12835802

 12800858

 12840940

 12795975

 12845055

 12790837

 12785699

 12780816

 12779531

Harmonies

Analogous

The Analogous color harmony consists of three colors that are next to each other on the color wheel.



12493231



12820899



12690328

Triad

The Triadic color harmony groups three colors that are evenly spaced from another and form a triangle on the color wheel.



12820899



10399384



9874624

Complementary

The Complementary color scheme is a pair of colors which are on the opposite of each other on the color wheel.



12820899



10601409

Split Complementary

Split-complementary colors differ from the complementary color scheme. The scheme consists of three colors, the original color and two neighbors of the complement color.



9220026



12820899



9613475

Square

The Square scheme is like the rectangle color scheme, but the four colors are evenly spaced on the color wheel.



12820899



11315858



9154735



10791104

Rectangle

The Rectangle color scheme consists of four colors that form a rectangle on the color wheel.



12820899



12363155



9154735



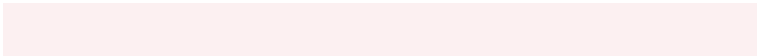
9612735

Sweetspot

The Sweet Spot groups the original color and five complimentary colors.



12820899



16576753



12689859



8419448



0



8421504

Same Dimension

The Same Dimension uses a secret algorithm to generate beautiful new colors.



12820899



16566219



12824737



6379352



10551305



2162690

Inverse Universe

The Inverse Universe completely reimagines the original color for something new.



12820899



16566219



10597571



6379352



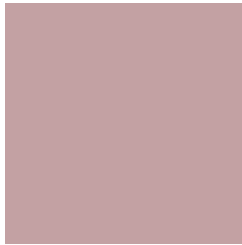
10551305



2162690

Previews

White Background



This preview shows how the Decimal color 12820899 looks on a white background.

Color Contrast Check

Large Text (above 18pt) WCAG AA × Fail

Any Text WCAG AA × Fail

Large Text (above 18pt) WCAG AAA × Fail

Any Text WCAG AAA × Fail

Black Background



This preview shows how the Decimal color 12820899 looks on a black background.

Color Contrast Check

Large Text (above 18pt) WCAG AA ✓ Pass

Any Text WCAG AA ✓ Pass

Large Text (above 18pt) WCAG AAA ✓ Pass

Any Text WCAG AAA ✓ Pass

If you want to check with other color combinations, try the [Color Contrast Checker](#).

Decimal 12820899 Background



This preview shows how black text looks on a background with the Decimal color 12820899.



This preview shows how white text looks on a background with the Decimal color 12820899.

Color Blindness Simulation

Color vision deficiency is a very complex topic, and I could not describe the different causes any better than Wikipedia does, so if you want to learn more, you should check out their [article about color blindness](#).


Dichromacy



Original Color
12820899

Protanopia
11381159

Deuteranopia
12362914



Tritanopia
12886188

Trichromacy



Original Color
12820899

Protanomaly
11904678

Deuteranomaly
12559266

Tritanomaly
12886185

Monochromacy



Original Color
12820899

Achromatopsia
11250603

Achromatomaly
11839400

CSS Examples

Text

The CSS property to change the color of the text to Decimal 12820899 is called "color". The color property can be set on classes, ids or directly on the HTML element.

This example shows how text in the color #C3A1A3 looks like.

```
.text, #text, p{  
  color:#C3A1A3  
}
```

If you want to add a text shadow in that color use the text-shadow property, you can generate a text shadow directly with our [CSS Text Shadow Generator](#).

Here you see how black text with a 4 pixel #C3A1A3 colored shadow looks like.

```
.shadow{ text-shadow: 4px 4px 2px #C3A1A3
}
```

Border

The CSS property to change the border of an element to Decimal 12820899 is called "border". The border property can be set on classes, ids or directly on the HTML element.

This example shows the color as border, it can be applied via the CSS property "border" or "border-color".

```
.border, #border, table{ border:4px solid
#C3A1A3 }
```

If only the border color should be changed use the property `border-color`.

```
.border{ border-color:#C3A1A3 }
```

If you want to add a box shadow in that color use:

Here you see how a box with a 4 pixel #C3A1A3 colored shadow looks like.

```
.boxshadow{ -moz-box-shadow:4px 4px 4px  
4px #C3A1A3; -webkit-box-shadow:4px 4px  
4px 4px #C3A1A3; box-shadow:4px 4px 4px  
4px #C3A1A3 }
```

Background

The CSS property to change the background color of an element to Decimal 12820899 is called "background". The background property can be set on classes, ids or directly on the HTML element.

```
.background, #background, body{  
background:#C3A1A3 }
```

If only the background color should be changed can be used:

```
.background{ background-color:#C3A1A3 }
```

This example shows the color as background, it is applied via the CSS property "background".

To optimize and compress your CSS code, you can use our [online CSS compressor and optimizer](#) based on csstidy. If you want to create a linear or radial gradient as background or border, check our [CSS Gradient Generator](#).

Hey! You found this booklet interesting? Support Converting Colors with the new Membership Option!

The pro membership hides all ads, plus gives you double the colors in the color bucket, and more awesome pro features!

[Learn more, Memberships starting at \\$2.50/m!](#)

**Follow me
on Twitter!**

@ConvertingColor