

Converting Colors

Decimal(12821130)

Have a look what the booklet for
Decimal(12821130) contains.

| | |
|--|----|
| Decimal(12821130) | 3 |
| <i>Conversions</i> | 4 |
| <i>Details</i> | 6 |
| <i>Harmonies</i> | 11 |
| <i>Previews</i> | 23 |
| <i>Color Blindness Simulation</i> | 26 |
| <i>CSS Examples</i> | 29 |

Color

Decimal(12821130)

Conversions

Conversions Part 1

| Format | Color |
|-------------|----------------------------|
| Hex | C3A28A |
| RGB | 195, 162, 138 |
| RGB Percent | 76%, 64%, 54% |
| CMY | 0.2353, 0.3647, 0.4588 |
| CMYK | 0.00, 0.17, 0.29, 0.24 |
| HSL | 25°, 32%, 65% |
| HSV | 25°, 29%, 76% |
| XYZ | 40.0135, 39.2777, 29.5172 |
| YIQ | 169.1310, 27.3720, -0.4680 |

Conversions

Conversions Part 2

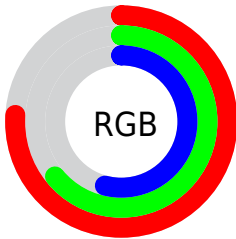
| Format | Color |
|-------------------------------------|--------------------------------|
| R _Y B | 195, 179, 138 |
| Decimal | 12821130 |
| CIE Lab | 68.95, 8.56, 17.03 |
| CIE LCh | 69, 19.061, 63.302 |
| Yxy | 39.2777, 0.3677, 0.3610 |
| Android (android.graphics.Color) | 4291011210 (0xFFC3A28A) |
| YUV | 169.1310, -15.3476, 22.6871 |
| Hunter-Lab | 62.6720, 4.2889, 15.9460 |

Details

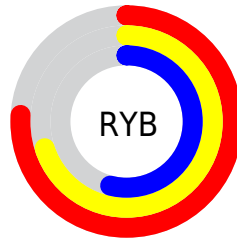
The Decimal color **12821130** is a light color, and the websafe version is hex **CC9999**. A complement of this color would be **9087939**, and the grayscale version is **11119017**.

A 20% lighter version of the original color is **16570816**, and **9203288** is the 20% darker color. If you saturate the color by 10%, you get **12818294**, and if you desaturate by 10%, it is **12823966**.

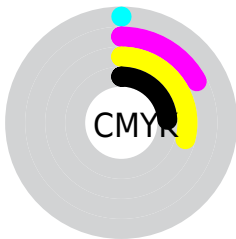
Distribution



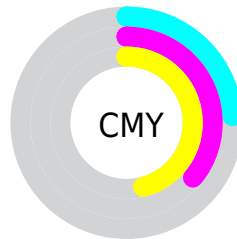
- Red (76%)
- Green (64%)
- Blue (54%)



- Red (76%)
- Yellow (70%)
- Blue (54%)



- Cyan (0%)
- Magenta (17%)
- Yellow (29%)
- Black (24%)



- Cyan (24%)
- Magenta (36%)
- Yellow (46%)

Brightness & Saturation Gradients

These gradients show how the Decimal color 12821130 changes by changing the brightness by 10 percent. The first figure shows a shift by +10% for each color and the second figure -10%.

Similar to the brightness gradients but the following saturation gradients show a change of the Decimal color 12821130 by changing the saturation by 10% instead.

 12821130

 12821130

16777215

 10979441

 16570816

 9203288

 16774619

 7493185

 16777208

 5848874

 4204821

 2757632

 720896

 0

 12821130

 12821130

 12818294

 12823966

 12815203

 12827057

 12812367

 12829892

 12809532

 12832728

 12806697

 12835563

 12803605

 12838655

 12800770

 12841471

 12800512

 12844287

 12845055

Harmonies

Analogous

The Analogous color harmony consists of three colors that are next to each other on the color wheel.



13344406



12821130



11839622

Triad

The Triadic color harmony groups three colors that are evenly spaced from another and form a triangle on the color wheel.



12821130



8303274



11445189

Complementary

The Complementary color scheme is a pair of colors which are on the opposite of each other on the color wheel.



12821130



9087939

Split Complementary

Split-complementary colors differ from the complementary color scheme. The scheme consists of three colors, the original color and two neighbors of the complement color.



9939402



12821130



7975355

Square

The Square scheme is like the rectangle color scheme, but the four colors are evenly spaced on the color wheel.



12821130



9286040



8629959



12623544

Rectangle

The Rectangle color scheme consists of four colors that form a rectangle on the color wheel.



12821130



10988424



8629959



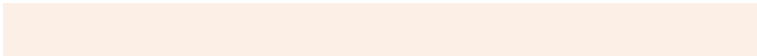
10921416

Sweetspot

The Sweet Spot groups the original color and five complimentary colors.



12821130



16576486



12815019



8419185



0



8421504

Same Dimension

The Same Dimension uses a secret algorithm to generate beautiful new colors.



12821130



16566692



12828298



6380375



10568704



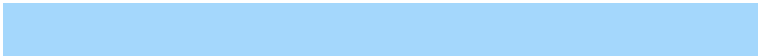
2166272

Inverse Universe

The Inverse Universe completely reimagines the original color for something new.



9087939



10803196



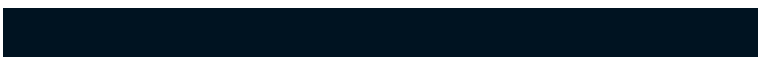
9080771



5725537



23969



4897

Previews

White Background



This preview shows how the Decimal color 12821130 looks on a white background.

Color Contrast Check

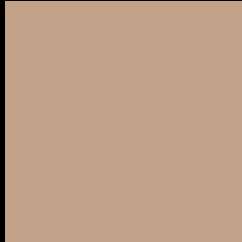
Large Text (above 18pt) WCAG AA × Fail

Any Text WCAG AA × Fail

Large Text (above 18pt) WCAG AAA × Fail

Any Text WCAG AAA × Fail

Black Background



This preview shows how the Decimal color 12821130 looks on a black background.

Color Contrast Check

Large Text (above 18pt) WCAG AA ✓ Pass

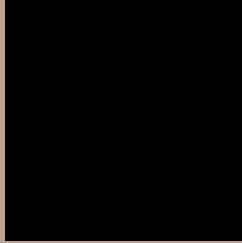
Any Text WCAG AA ✓ Pass

Large Text (above 18pt) WCAG AAA ✓ Pass

Any Text WCAG AAA ✓ Pass

If you want to check with other color combinations, try the [Color Contrast Checker](#).

Decimal 12821130 Background



This preview shows how black text looks on a background with the Decimal color 12821130.



This preview shows how white text looks on a background with the Decimal color 12821130.

Color Blindness Simulation

Color vision deficiency is a very complex topic, and I could not describe the different causes any better than Wikipedia does, so if you want to learn more, you should check out their [article about color blindness](#).

Dichromacy



Original Color
12821130

Protanopia
11708557

Deuteranopia
12821130



Tritanopia
13082282

Trichromacy



Original Color
12821130

Protanomaly
12101260

Deuteranomaly
12821130

Tritanomaly
13016990

Monochromacy



Original Color
12821130

Achromatopsia
11119017

Achromatomaly
11708062

CSS Examples

Text

The CSS property to change the color of the text to Decimal 12821130 is called "color". The color property can be set on classes, ids or directly on the HTML element.

This example shows how text in the color #C3A28A looks like.

```
.text, #text, p{  
  color:#C3A28A  
}
```

If you want to add a text shadow in that color use the text-shadow property, you can generate a text shadow directly with our [CSS Text Shadow Generator](#).

Here you see how black text with a 4 pixel #C3A28A colored shadow looks like.

```
.shadow{ text-shadow: 4px 4px 2px #C3A28A
}
```

Border

The CSS property to change the border of an element to Decimal 12821130 is called "border". The border property can be set on classes, ids or directly on the HTML element.

This example shows the color as border, it can be applied via the CSS property "border" or "border-color".

```
.border, #border, table{ border:4px solid
#C3A28A }
```

If only the border color should be changed use the property `border-color`.

```
.border{ border-color:#C3A28A }
```

If you want to add a box shadow in that color use:

Here you see how a box with a 4 pixel #C3A28A colored shadow looks like.

```
.boxshadow{ -moz-box-shadow:4px 4px 4px  
4px #C3A28A; -webkit-box-shadow:4px 4px  
4px 4px #C3A28A; box-shadow:4px 4px 4px  
4px #C3A28A }
```

Background

The CSS property to change the background color of an element to Decimal 12821130 is called "background". The background property can be set on classes, ids or directly on the HTML element.

```
.background, #background, body{  
background:#C3A28A }
```

If only the background color should be changed can be used:

```
.background{ background-color:#C3A28A }
```

This example shows the color as background, it is applied via the CSS property "background".

To optimize and compress your CSS code, you can use our [online CSS compressor and optimizer](#) based on csstidy. If you want to create a linear or radial gradient as background or border, check our [CSS Gradient Generator](#).

Hey! You found this booklet interesting? Support Converting Colors with the new Membership Option!

The pro membership hides all ads, plus gives you double the colors in the color bucket, and more awesome pro features!

[Learn more, Memberships starting at \\$2.50/m!](#)

**Follow me
on Twitter!**

@ConvertingColor