

# Converting Colors

Decimal(12821146)

Have a look what the booklet for  
Decimal(12821146) contains.

<b>Decimal(12821146)</b> .....	3
<i><b>Conversions</b></i> .....	4
<i><b>Details</b></i> .....	6
<i><b>Harmonies</b></i> .....	11
<i><b>Previews</b></i> .....	23
<i><b>Color Blindness Simulation</b></i> .....	26
<i><b>CSS Examples</b></i> .....	29

# **Color**

**Decimal(12821146)**

# Conversions

## Conversions Part 1

Format	Color
Hex	C3A29A
RGB	195, 162, 154
RGB Percent	76%, 64%, 60%
CMY	0.2353, 0.3647, 0.3961
CMYK	0.00, 0.17, 0.21, 0.24
HSL	12°, 25%, 68%
HSV	12°, 21%, 76%
XYZ	41.2587, 39.7759, 36.0748
YIQ	170.9550, 22.2360, 4.5080

# Conversions

## Conversions Part 2

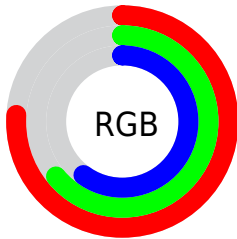
<b>Format</b>	<b>Color</b>
<a href="#">RYB</a>	<a href="#">195, 164, 154</a>
Decimal	<a href="#">12821146</a>
CIELab	<a href="#">69.31, 10.87, 8.69</a>
CIELCh	<a href="#">69, 13.919, 38.650</a>
Yxy	<a href="#">39.7759, 0.3523, 0.3396</a>
Android (android.graphics.Color)	<a href="#">4291011226 (0xFFC3A29A)</a>
YUV	<a href="#">170.9550, -8.3588, 21.0875</a>
Hunter-Lab	<a href="#">63.0681, 6.4044, 10.2340</a>

# Details

The Decimal color **12821146** is a light color, and the websafe version is hex **CC9999**. A complement of this color would be **10140611**, and the grayscale version is **11250603**.

A 20% lighter version of the original color is **16570832**, and **9268839** is the 20% darker color. If you saturate the color by 10%, you get **12817030**, and if you desaturate by 10%, it is **12825261**.

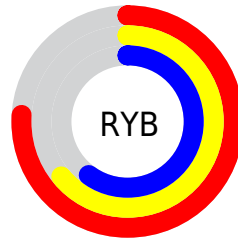
# Distribution



Red (76%)

Green (64%)

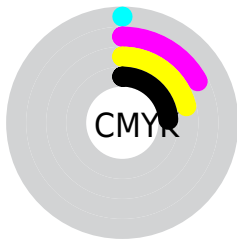
Blue (60%)



Red (76%)

Yellow (64%)

Blue (60%)

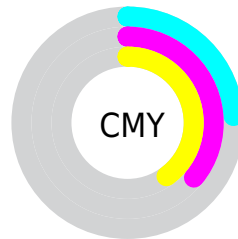


Cyan (0%)

Magenta (17%)

Yellow (21%)

Black (24%)



Cyan (24%)

Magenta (36%)

Yellow (40%)

# Brightness & Saturation Gradients

These gradients show how the Decimal color 12821146 changes by changing the brightness by 10 percent. The first figure shows a shift by +10% for each color and the second figure -10%.

Similar to the brightness gradients but the following saturation gradients show a change of the Decimal color 12821146 by changing the saturation by 10% instead.



 12821146

 12821146

16777215

 11044992

 16570832

 9268839

 16774637

 7558735

 5914424

 4335907

 2823181

 1179648

 0

 12821146

 12821146

 12817030

 12825261

 12813171

 12829121

 12809056

 12833236

 12804940

 12837352

 12801081

 12841212

 12796965

 12845055

 12792850

 12789248

# Harmonies

## Analogous

The Analogous color harmony consists of three colors that are next to each other on the color wheel.



12886438



12821146



12363154

# Triad

The Triadic color harmony groups three colors that are evenly spaced from another and form a triangle on the color wheel.



12821146



9744544



10529218

# Complementary

The Complementary color scheme is a pair of colors which are on the opposite of each other on the color wheel.



12821146



10140611

# Split Complementary

Split-complementary colors differ from the complementary color scheme. The scheme consists of three colors, the original color and two neighbors of the complement color.



9612736



12821146



9089453

# Square

The Square scheme is like the rectangle color scheme, but the four colors are evenly spaced on the color wheel.



12821146



10595733



9023672



11576765

# Rectangle

The Rectangle color scheme consists of four colors that form a rectangle on the color wheel.



12821146



11839632



9023672



10201794

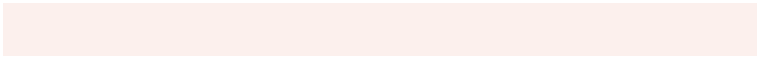


# Sweetspot

The Sweet Spot groups the original color and five complimentary colors.



12821146



16576749



12819131



8419447



0



8421504



# Same Dimension

The Same Dimension uses a secret algorithm to generate beautiful new colors.



12821146



16566973



12826266



6379863



10559232



2164224

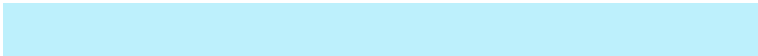


# Inverse Universe

The Inverse Universe completely reimagines the original color for something new.



10140611



12447996



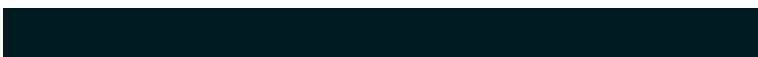
10135491



5726049



33185

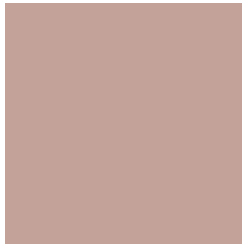


6945



# Previews

## White Background



This preview shows how the Decimal color 12821146 looks on a white background.

## Color Contrast Check

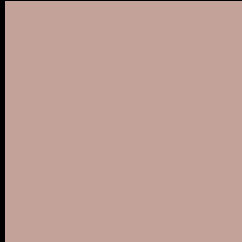
Large Text (above 18pt) WCAG AA × Fail

Any Text WCAG AA × Fail

Large Text (above 18pt) WCAG AAA × Fail

Any Text WCAG AAA × Fail

# Black Background



This preview shows how the Decimal color 12821146 looks on a black background.

## Color Contrast Check

Large Text (above 18pt) WCAG AA ✓ Pass

Any Text WCAG AA ✓ Pass

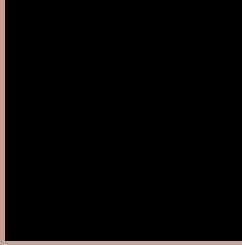
Large Text (above 18pt) WCAG AAA ✓ Pass

Any Text WCAG AAA ✓ Pass

If you want to check with other color combinations, try the [Color Contrast Checker](#).



## Decimal 12821146 Background



This preview shows how black text looks on a background with the Decimal color 12821146.



This preview shows how white text looks on a background with the Decimal color 12821146.

# Color Blindness Simulation

Color vision deficiency is a very complex topic, and I could not describe the different causes any better than Wikipedia does, so if you want to learn more, you should check out their [article about color blindness](#).


## Dichromacy



**Original Color**  
12821146

**Protanopia**  
11512222

**Deuteranopia**  
12624794



**Tritanopia**  
12951468

# Trichromacy



**Original Color**  
12821146

**Protanomaly**  
11970205

**Deuteranomaly**  
12690330

**Tritanomaly**  
12886181

# Monochromacy



**Original Color**  
12821146

**Achromatopsia**  
11250603

**Achromatomaly**  
11839653

# CSS Examples

## Text

The CSS property to change the color of the text to Decimal 12821146 is called "color". The color property can be set on classes, ids or directly on the HTML element.

This example shows how text in the color #C3A29A looks like.

```
.text, #text, p{  
    color:#C3A29A  
}
```

If you want to add a text shadow in that color use the text-shadow property, you can generate a text shadow directly with our [CSS Text Shadow Generator](#).

Here you see how black text with a 4 pixel #C3A29A colored shadow looks like.

```
.shadow{ text-shadow: 4px 4px 2px #C3A29A
}
```

## Border

The CSS property to change the border of an element to Decimal 12821146 is called "border". The border property can be set on classes, ids or directly on the HTML element.

This example shows the color as border, it can be applied via the CSS property "border" or "border-color".

```
.border, #border, table{ border:4px solid
#C3A29A }
```

If only the border color should be changed use the property `border-color`.

```
.border{ border-color:#C3A29A }
```

If you want to add a box shadow in that color use:

Here you see how a box with a 4 pixel #C3A29A colored shadow looks like.

```
.boxshadow{ -moz-box-shadow:4px 4px 4px  
4px #C3A29A; -webkit-box-shadow:4px 4px  
4px 4px #C3A29A; box-shadow:4px 4px 4px  
4px #C3A29A }
```

# Background

The CSS property to change the background color of an element to Decimal 12821146 is called "background". The background property can be set on classes, ids or directly on the HTML element.

```
.background, #background, body{  
background:#C3A29A }
```

If only the background color should be changed can be used:

```
.background{ background-color:#C3A29A }
```

This example shows the color as background, it is applied via the CSS property "background".

To optimize and compress your CSS code, you can use our [online CSS compressor and optimizer](#) based on csstidy. If you want to create a linear or radial gradient as background or border, check our [CSS Gradient Generator](#).



Hey! You found this booklet interesting? Support Converting Colors with the new Membership Option!

The pro membership hides all ads, plus gives you double the colors in the color bucket, and more awesome pro features!

**[Learn more, Memberships starting at \\$2.50/m!](#)**

**Follow me  
on Twitter!**

@ConvertingColor