

Converting Colors

Decimal(12821155)

Have a look what the booklet for
Decimal(12821155) contains.

Decimal(12821155)	3
<i>Conversions</i>	4
<i>Details</i>	6
<i>Harmonies</i>	11
<i>Previews</i>	23
<i>Color Blindness Simulation</i>	26
<i>CSS Examples</i>	29

Color

Decimal(12821155)

Conversions

Conversions Part 1

Format	Color
Hex	C3A2A3
RGB	195, 162, 163
RGB Percent	76%, 64%, 64%
CMY	0.2353, 0.3647, 0.3608
CMYK	0.00, 0.17, 0.16, 0.24
HSL	358°, 22%, 70%
HSV	358°, 17%, 76%
XYZ	42.0369, 40.0871, 40.1723
YIQ	171.9810, 19.3470, 7.3070

Conversions

Conversions Part 2

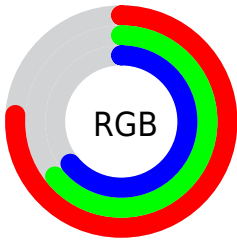
Format	Color
R_{YB}	195, 162, 163
Decimal	12821155
CIE _{Lab}	69.53, 12.28, 4.02
CIE _{LCh}	70, 12.921, 18.141
Yxy	40.0871, 0.3437, 0.3278
Android (android.graphics.Color)	4291011235 (0xFFC3A2A3)
YUV	171.9810, -4.4276, 20.1877
Hunter-Lab	63.3144, 7.7129, 6.7012

Details

The Decimal color **12821155** is a light color, and the websafe version is hex **CC9999**. A complement of this color would be **10666946**, and the grayscale version is **11316396**.

A 20% lighter version of the original color is **16570842**, and **9268847** is the 20% darker color. If you saturate the color by 10%, you get **12816272**, and if you desaturate by 10%, it is **12826294**.

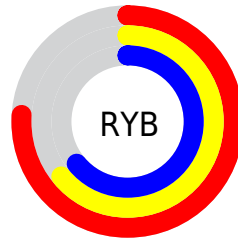
Distribution



Red (76%)

Green (64%)

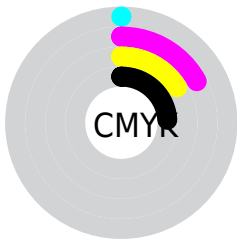
Blue (64%)



Red (76%)

Yellow (64%)

Blue (64%)

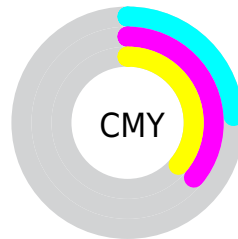


Cyan (0%)

Magenta (17%)

Yellow (16%)

Black (24%)



Cyan (24%)

Magenta (36%)

Yellow (36%)

Brightness & Saturation Gradients

These gradients show how the Decimal color 12821155 changes by changing the brightness by 10 percent. The first figure shows a shift by +10% for each color and the second figure -10%.

Similar to the brightness gradients but the following saturation gradients show a change of the Decimal color 12821155 by changing the saturation by 10% instead.

 12821155

 12821155

16777215

 11045001

 16570842

 9268847

 16774646

 7558743

 5914432

 4335658

 2823190

 1441792

 0

 12821155

 12821155

 12816272

 12826294

 12811133

 12831177

 12806250

 12836060

 12801111

 12841199

 12796228

 12845055

 12791090

 12785951

 12781068

 12779526

Harmonies

Analogous

The Analogous color harmony consists of three colors that are next to each other on the color wheel.



12559023



12821155



12625049

Triad

The Triadic color harmony groups three colors that are evenly spaced from another and form a triangle on the color wheel.



12821155



10399642



10005696

Complementary

The Complementary color scheme is a pair of colors which are on the opposite of each other on the color wheel.



12821155



10666946

Split Complementary

Split-complementary colors differ from the complementary color scheme. The scheme consists of three colors, the original color and two neighbors of the complement color.



9351099



12821155



9679013

Square

The Square scheme is like the rectangle color scheme, but the four colors are evenly spaced on the color wheel.



12821155



11316116



9220529



10922176

Rectangle

The Rectangle color scheme consists of four colors that form a rectangle on the color wheel.



12821155



12297876



9220529



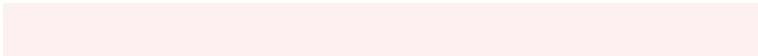
9743807

Sweetspot

The Sweet Spot groups the original color and five complimentary colors.



12821155



16576752



12755651



8419448



0



8421504

Same Dimension

The Same Dimension uses a secret algorithm to generate beautiful new colors.



12821155



16566987



12824994



6379352



10551301



2162689

Inverse Universe

The Inverse Universe completely reimagines the original color for something new.



12821155



16566987



10663107



6379352



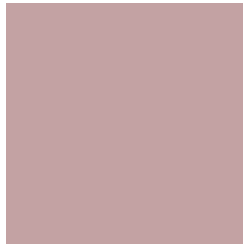
10551301



2162689

Previews

White Background



This preview shows how the Decimal color 12821155 looks on a white background.

Color Contrast Check

Large Text (above 18pt) WCAG AA × Fail

Any Text WCAG AA × Fail

Large Text (above 18pt) WCAG AAA × Fail

Any Text WCAG AAA × Fail

Black Background



This preview shows how the Decimal color 12821155 looks on a black background.

Color Contrast Check

Large Text (above 18pt) WCAG AA ✓ Pass

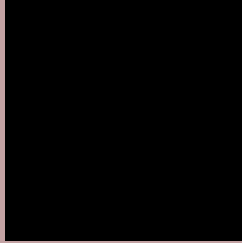
Any Text WCAG AA ✓ Pass

Large Text (above 18pt) WCAG AAA ✓ Pass

Any Text WCAG AAA ✓ Pass

If you want to check with other color combinations, try the [Color Contrast Checker](#).

Decimal 12821155 Background



This preview shows how black text looks on a background with the Decimal color 12821155.



This preview shows how white text looks on a background with the Decimal color 12821155.

Color Blindness Simulation

Color vision deficiency is a very complex topic, and I could not describe the different causes any better than Wikipedia does, so if you want to learn more, you should check out their [article about color blindness](#).


Dichromacy



Original Color
12821155

Protanopia
11446695

Deuteranopia
12428451



Tritanopia
12886189

Trichromacy



Original Color
12821155

Protanomaly
11970214

Deuteranomaly
12559267

Tritanomaly
12886441

Monochromacy



Original Color
12821155

Achromatopsia
11316396

Achromatomaly
11839657

CSS Examples

Text

The CSS property to change the color of the text to Decimal 12821155 is called "color". The color property can be set on classes, ids or directly on the HTML element.

This example shows how text in the color #C3A2A3 looks like.

```
.text, #text, p{  
  color:#C3A2A3  
}
```

If you want to add a text shadow in that color use the text-shadow property, you can generate a text shadow directly with our [CSS Text Shadow Generator](#).

Here you see how black text with a 4 pixel #C3A2A3 colored shadow looks like.

```
.shadow{ text-shadow: 4px 4px 2px #C3A2A3
}
```

Border

The CSS property to change the border of an element to Decimal 12821155 is called "border". The border property can be set on classes, ids or directly on the HTML element.

This example shows the color as border, it can be applied via the CSS property "border" or "border-color".

```
.border, #border, table{ border:4px solid
#C3A2A3 }
```

If only the border color should be changed use the property `border-color`.

```
.border{ border-color:#C3A2A3 }
```

If you want to add a box shadow in that color use:

Here you see how a box with a 4 pixel #C3A2A3 colored shadow looks like.

```
.boxshadow{ -moz-box-shadow:4px 4px 4px  
4px #C3A2A3; -webkit-box-shadow:4px 4px  
4px 4px #C3A2A3; box-shadow:4px 4px 4px  
4px #C3A2A3 }
```

Background

The CSS property to change the background color of an element to Decimal 12821155 is called "background". The background property can be set on classes, ids or directly on the HTML element.

```
.background, #background, body{  
background:#C3A2A3 }
```

If only the background color should be changed can be used:

```
.background{ background-color:#C3A2A3 }
```

This example shows the color as background, it is applied via the CSS property "background".

To optimize and compress your CSS code, you can use our [online CSS compressor and optimizer](#) based on csstidy. If you want to create a linear or radial gradient as background or border, check our [CSS Gradient Generator](#).

Hey! You found this booklet interesting? Support Converting Colors with the new Membership Option!

The pro membership hides all ads, plus gives you double the colors in the color bucket, and more awesome pro features!

[Learn more, Memberships starting at \\$2.50/m!](#)

**Follow me
on Twitter!**

@ConvertingColor