

# Converting Colors

Decimal(12821656)

Have a look what the booklet for  
Decimal(12821656) contains.

<b>Decimal(12821656)</b> .....	3
<i><b>Conversions</b></i> .....	4
<i><b>Details</b></i> .....	6
<i><b>Harmonies</b></i> .....	11
<i><b>Previews</b></i> .....	23
<i><b>Color Blindness Simulation</b></i> .....	26
<i><b>CSS Examples</b></i> .....	29

# **Color**

**Decimal(12821656)**

# Conversions

## Conversions Part 1

<b>Format</b>	<b>Color</b>
Hex	C3A498
RGB	195, 164, 152
RGB Percent	76%, 64%, 60%
CMY	0.2353, 0.3569, 0.4039
CMYK	0.00, 0.16, 0.22, 0.24
HSL	17°, 26%, 68%
HSV	17°, 22%, 76%
XYZ	41.4486, 40.4200, 35.3230
YIQ	171.9010, 22.3280, 2.8400

# Conversions

## Conversions Part 2

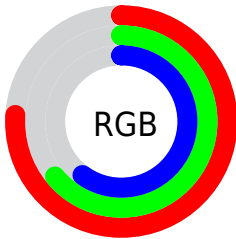
<b>Format</b>	<b>Color</b>
<b>RYB</b>	195, 169, 152
Decimal	12821656
CIELab	69.77, 9.48, 10.45
CIELCh	70, 14.108, 47.802
Yxy	40.4200, 0.3537, 0.3449
Android (android.graphics.Color)	4291011736 (0xFFC3A498)
YUV	171.9010, -9.8112, 20.2578
Hunter-Lab	63.5767, 5.1132, 11.5624

# Details

The Decimal color **12821656** is a light color, and the websafe version is hex **CC9999**. A complement of this color would be **10008515**, and the grayscale version is **11316396**.

A 20% lighter version of the original color is **16571342**, and **9269349** is the 20% darker color. If you saturate the color by 10%, you get **12818053**, and if you desaturate by 10%, it is **12825259**.

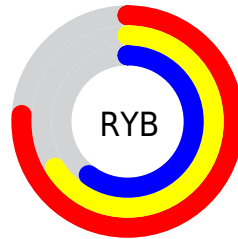
# Distribution



Red (76%)

Green (64%)

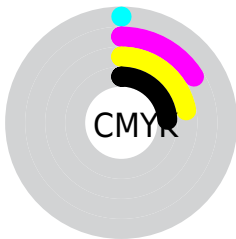
Blue (60%)



Red (76%)

Yellow (66%)

Blue (60%)

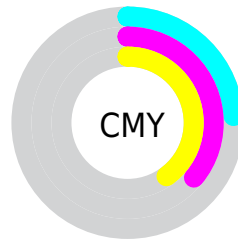


Cyan (0%)

Magenta (16%)

Yellow (22%)

Black (24%)



Cyan (24%)

Magenta (36%)

Yellow (40%)

# Brightness & Saturation Gradients

These gradients show how the Decimal color 12821656 changes by changing the brightness by 10 percent. The first figure shows a shift by +10% for each color and the second figure -10%.

Similar to the brightness gradients but the following saturation gradients show a change of the Decimal color 12821656 by changing the saturation by 10% instead.



■ 12821656

■ 12821656

16777215

■ 11045502

■ 16571342

■ 9269349

■ 16775146

■ 7559245

■ 5914678

■ 4336161

■ 2823691

■ 1245184

■ 0

■ 12821656

■ 12821656

 12818053

 12825259

 12814449

 12828863

 12810846

 12832466

 12807242

 12836070

 12803639

 12839674

 12800035

 12843263

 12796432

 12845055

 12793344

# Harmonies

## Analogous

The Analogous color harmony consists of three colors that are next to each other on the color wheel.



13017763



12821656



12232850

# Triad

The Triadic color harmony groups three colors that are evenly spaced from another and form a triangle on the color wheel.



12821656



9548453



10922435

# Complementary

The Complementary color scheme is a pair of colors which are on the opposite of each other on the color wheel.



12821656



10008515

# Split Complementary

Split-complementary colors differ from the complementary color scheme. The scheme consists of three colors, the original color and two neighbors of the complement color.



9874883



12821656



9089714

# Square

The Square scheme is like the rectangle color scheme, but the four colors are evenly spaced on the color wheel.



12821656



10399897



9220285



11969980

# Rectangle

The Rectangle color scheme consists of four colors that form a rectangle on the color wheel.



12821656



11643793



9220285



10595012

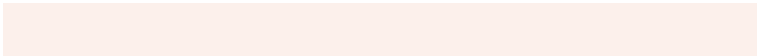


# Sweetspot

The Sweet Spot groups the original color and five complimentary colors.



12821656



16576747



12818616



8419445



0



8421504

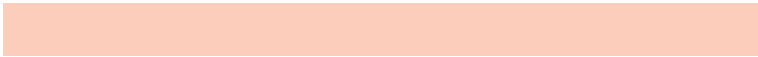


# Same Dimension

The Same Dimension uses a secret algorithm to generate beautiful new colors.



12821656



16567739



12827032



6380119



10562816



2164992

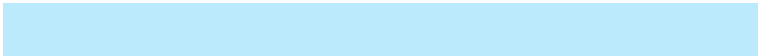


# Inverse Universe

The Inverse Universe completely reimagines the original color for something new.



10008515



12315388



10003139



5725793



29857

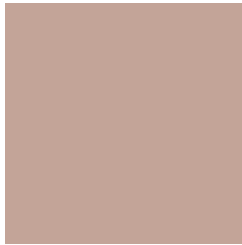


6177



# Previews

## White Background



This preview shows how the Decimal color 12821656 looks on a white background.

## Color Contrast Check

Large Text (above 18pt) WCAG AA × Fail

Any Text WCAG AA × Fail

Large Text (above 18pt) WCAG AAA × Fail

Any Text WCAG AAA × Fail

# Black Background



This preview shows how the Decimal color 12821656 looks on a black background.

## Color Contrast Check

Large Text (above 18pt) WCAG AA ✓ Pass

Any Text WCAG AA ✓ Pass

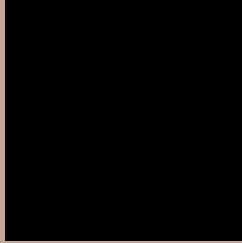
Large Text (above 18pt) WCAG AAA ✓ Pass

Any Text WCAG AAA ✓ Pass

If you want to check with other color combinations, try the [Color Contrast Checker](#).



## Decimal 12821656 Background



This preview shows how black text looks on a background with the Decimal color 12821656.



This preview shows how white text looks on a background with the Decimal color 12821656.

# Color Blindness Simulation

Color vision deficiency is a very complex topic, and I could not describe the different causes any better than Wikipedia does, so if you want to learn more, you should check out their [article about color blindness](#).

## Dichromacy





**Tritanopia**  
13017517

# Trichromacy



**Original Color**  
12821656

**Protanomaly**  
12101786

**Deuteranomaly**  
12756120

**Tritanomaly**  
12952229

# Monochromacy



**Original Color**  
12821656

**Achromatopsia**  
11316396

**Achromatomaly**  
11839909

# CSS Examples

## Text

The CSS property to change the color of the text to Decimal 12821656 is called "color". The color property can be set on classes, ids or directly on the HTML element.

This example shows how text in the color #C3A498 looks like.

```
.text, #text, p{  
  color:#C3A498  
}
```

If you want to add a text shadow in that color use the text-shadow property, you can generate a text shadow directly with our [CSS Text Shadow Generator](#).

Here you see how black text with a 4 pixel #C3A498 colored shadow looks like.

```
.shadow{ text-shadow: 4px 4px 2px #C3A498
}
```

## Border

The CSS property to change the border of an element to Decimal 12821656 is called "border". The border property can be set on classes, ids or directly on the HTML element.

This example shows the color as border, it can be applied via the CSS property "border" or "border-color".

```
.border, #border, table{ border:4px solid
#C3A498 }
```

If only the border color should be changed use the property `border-color`.

```
.border{ border-color:#C3A498 }
```

If you want to add a box shadow in that color use:

Here you see how a box with a 4 pixel #C3A498 colored shadow looks like.

```
.boxshadow{ -moz-box-shadow:4px 4px 4px  
4px #C3A498; -webkit-box-shadow:4px 4px  
4px 4px #C3A498; box-shadow:4px 4px 4px  
4px #C3A498 }
```

# Background

The CSS property to change the background color of an element to Decimal 12821656 is called "background". The background property can be set on classes, ids or directly on the HTML element.

```
.background, #background, body{  
background:#C3A498 }
```

If only the background color should be changed can be used:

```
.background{ background-color:#C3A498 }
```

This example shows the color as background, it is applied via the CSS property "background".

To optimize and compress your CSS code, you can use our [online CSS compressor and optimizer](#) based on csstidy. If you want to create a linear or radial gradient as background or border, check our [CSS Gradient Generator](#).



Hey! You found this booklet interesting? Support Converting Colors with the new Membership Option!

The pro membership hides all ads, plus gives you double the colors in the color bucket, and more awesome pro features!

**[Learn more, Memberships starting at \\$2.50/m!](#)**

**Follow me  
on Twitter!**

@ConvertingColor