

# Converting Colors

Decimal(12823451)

Have a look what the booklet for  
Decimal(12823451) contains.

<b>Decimal(12823451)</b> .....	3
<i><b>Conversions</b></i> .....	4
<i><b>Details</b></i> .....	6
<i><b>Harmonies</b></i> .....	11
<i><b>Previews</b></i> .....	23
<i><b>Color Blindness Simulation</b></i> .....	26
<i><b>CSS Examples</b></i> .....	29

# **Color**

**Decimal(12823451)**

# Conversions

## Conversions Part 1

Format	Color
Hex	C3AB9B
RGB	195, 171, 155
RGB Percent	76%, 67%, 61%
CMY	0.2353, 0.3294, 0.3922
CMYK	0.00, 0.12, 0.21, 0.24
HSL	24°, 25%, 69%
HSV	24°, 21%, 76%
XYZ	42.9850, 43.0945, 37.0629
YIQ	176.3520, 19.4400, 0.1120

# Conversions

## Conversions Part 2

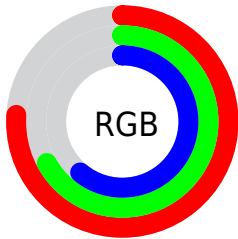
Format	Color
R <sub>Y</sub> B	195, 182, 155
Decimal	12823451
CIE Lab	71.62, 6.12, 11.42
CIE LCh	72, 12.961, 61.805
Yxy	43.0945, 0.3491, 0.3500
Android (android.graphics.Color)	4291013531 (0xFFC3AB9B)
YUV	176.3520, -10.5265, 16.3543
Hunter-Lab	65.6464, 1.9999, 12.4783

# Details

The Decimal color **12823451** is a light color, and the websafe version is hex **CC9999**. A complement of this color would be **10204099**, and the grayscale version is **11579568**.

A 20% lighter version of the original color is **16573137**, and **9271144** is the 20% darker color. If you saturate the color by 10%, you get **12820359**, and if you desaturate by 10%, it is **12826542**.

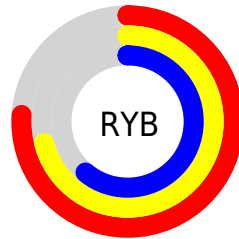
# Distribution



Red (76%)

Green (67%)

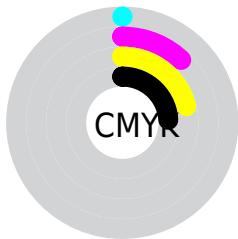
Blue (61%)



Red (76%)

Yellow (71%)

Blue (61%)

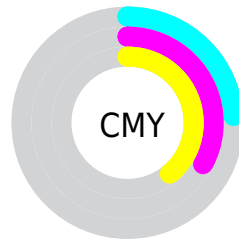


Cyan (0%)

Magenta (12%)

Yellow (21%)

Black (24%)



Cyan (24%)

Magenta (33%)

Yellow (39%)

# Brightness & Saturation Gradients

These gradients show how the Decimal color 12823451 changes by changing the brightness by 10 percent. The first figure shows a shift by +10% for each color and the second figure -10%.

Similar to the brightness gradients but the following saturation gradients show a change of the Decimal color 12823451 by changing the saturation by 10% instead.



 12823451

 12823451

16777215

 11047041

 16573137

 9271144

 16777198

 7560784

 5916473

 4337699

 2824974

 1376512

 0

 12823451

 12823451

 12820359

 12826542

 12817524

 12829378

 12814433

 12832469

 12811341

 12835561

 12808506

 12838653

 12805414

 12841471

 12802322

 12844543

 12799488

 12845055

# Harmonies

## Analogous

The Analogous color harmony consists of three colors that are next to each other on the color wheel.



13215907



12823451



12103576

# Triad

The Triadic color harmony groups three colors that are evenly spaced from another and form a triangle on the color wheel.



12823451



9746096



11775171

# Complementary

The Complementary color scheme is a pair of colors which are on the opposite of each other on the color wheel.



12823451



10204099

# Split Complementary

Split-complementary colors differ from the complementary color scheme. The scheme consists of three colors, the original color and two neighbors of the complement color.



10793159



12823451



9549499

# Square

The Square scheme is like the rectangle color scheme, but the four colors are evenly spaced on the color wheel.



12823451



10401188



9942212



12626363

# Rectangle

The Rectangle color scheme consists of four colors that form a rectangle on the color wheel.



12823451



11579801



9942212



11448005

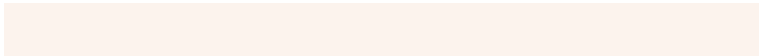


# Sweetspot

The Sweet Spot groups the original color and five complimentary colors.



12823451



16577517



12819379



8419959



0



8421504



# Same Dimension

The Same Dimension uses a secret algorithm to generate beautiful new colors.



12823451



16570301



12828571



6380375



10567680



2166016

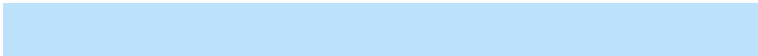


# Inverse Universe

The Inverse Universe completely reimagines the original color for something new.



10204099



12444668



10198979



5725537



24737



5153



# Previews

## White Background



This preview shows how the Decimal color 12823451 looks on a white background.

## Color Contrast Check

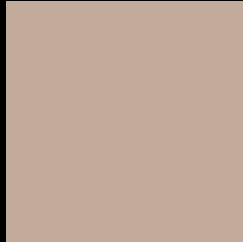
Large Text (above 18pt) WCAG AA × Fail

Any Text WCAG AA × Fail

Large Text (above 18pt) WCAG AAA × Fail

Any Text WCAG AAA × Fail

# Black Background



This preview shows how the Decimal color 12823451 looks on a black background.

## Color Contrast Check

Large Text (above 18pt) WCAG AA ✓ Pass

Any Text WCAG AA ✓ Pass

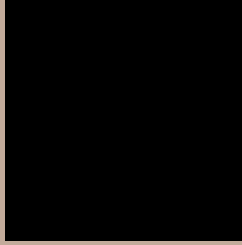
Large Text (above 18pt) WCAG AAA ✓ Pass

Any Text WCAG AAA ✓ Pass

If you want to check with other color combinations, try the [Color Contrast Checker](#).



## Decimal 12823451 Background



This preview shows how black text looks on a background with the Decimal color 12823451.



This preview shows how white text looks on a background with the Decimal color 12823451.

# Color Blindness Simulation

Color vision deficiency is a very complex topic, and I could not describe the different causes any better than Wikipedia does, so if you want to learn more, you should check out their [article about color blindness](#).

## Dichromacy



**Original Color**  
12823451

**Protanopia**  
12038045

**Deuteranopia**  
13150619



**Tritanopia**  
13019060

# Trichromacy



**Original Color**  
12823451

**Protanomaly**  
12299932

**Deuteranomaly**  
13019803

**Tritanomaly**  
12953771

# Monochromacy



**Original Color**  
12823451

**Achromatopsia**  
11579568

**Achromatomaly**  
12037800

# CSS Examples

## Text

The CSS property to change the color of the text to Decimal 12823451 is called "color". The color property can be set on classes, ids or directly on the HTML element.

This example shows how text in the color #C3AB9B looks like.

```
.text, #text, p{  
  color:#C3AB9B  
}
```

If you want to add a text shadow in that color use the text-shadow property, you can generate a text shadow directly with our [CSS Text Shadow Generator](#).

Here you see how black text with a 4 pixel #C3AB9B colored shadow looks like.

```
.shadow{ text-shadow: 4px 4px 2px #C3AB9B
}
```

## Border

The CSS property to change the border of an element to Decimal 12823451 is called "border". The border property can be set on classes, ids or directly on the HTML element.

This example shows the color as border, it can be applied via the CSS property "border" or "border-color".

```
.border, #border, table{ border:4px solid
#C3AB9B }
```

If only the border color should be changed use the property `border-color`.

```
.border{ border-color:#C3AB9B }
```

If you want to add a box shadow in that color use:

Here you see how a box with a 4 pixel #C3AB9B colored shadow looks like.

```
.boxshadow{ -moz-box-shadow:4px 4px 4px  
4px #C3AB9B; -webkit-box-shadow:4px 4px  
4px 4px #C3AB9B; box-shadow:4px 4px 4px  
4px #C3AB9B }
```

# Background

The CSS property to change the background color of an element to Decimal 12823451 is called "background". The background property can be set on classes, ids or directly on the HTML element.

```
.background, #background, body{  
background:#C3AB9B }
```

If only the background color should be changed can be used:

```
.background{ background-color:#C3AB9B }
```

This example shows the color as background, it is applied via the CSS property "background".

To optimize and compress your CSS code, you can use our [online CSS compressor and optimizer](#) based on csstidy. If you want to create a linear or radial gradient as background or border, check our [CSS Gradient Generator](#).



Hey! You found this booklet interesting? Support Converting Colors with the new Membership Option!

The pro membership hides all ads, plus gives you double the colors in the color bucket, and more awesome pro features!

**[Learn more, Memberships starting at \\$2.50/m!](#)**

**Follow me  
on Twitter!**

@ConvertingColor